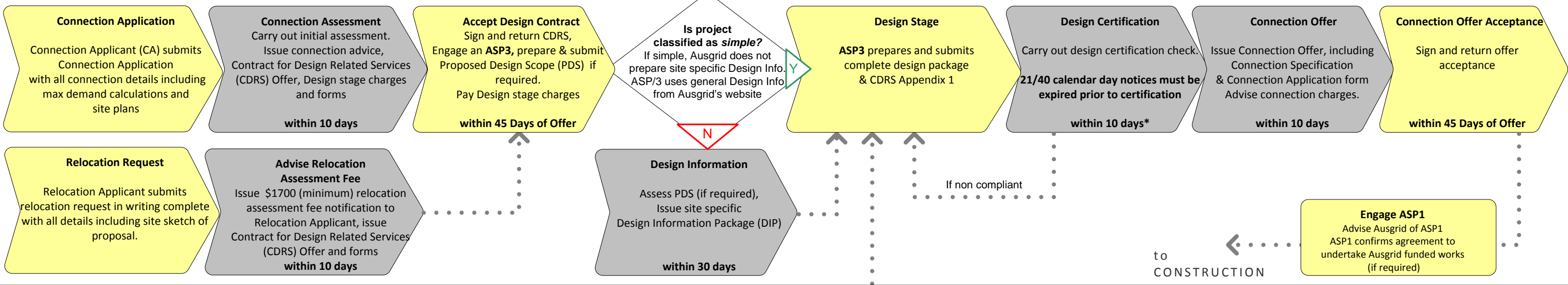
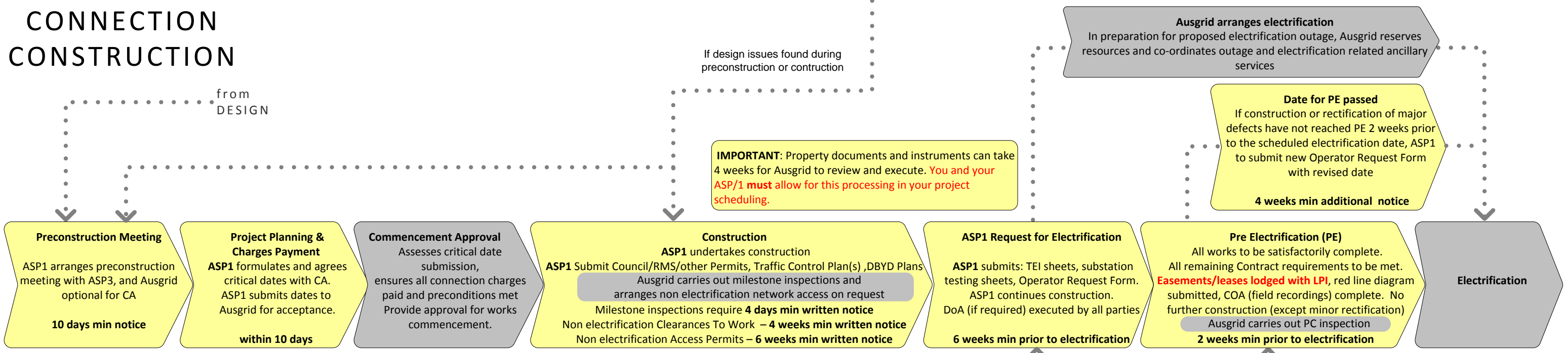


CONNECTION DESIGN

NETWORK CONNECTION OR RELOCATION PROCESS - APPLIES TO STANDARD DISTRIBUTION PROJECTS ONLY -



CONNECTION CONSTRUCTION



PRIVATE INSTALLATION

* indicates best endeavour timeframe
 Note: All days refer to business days unless noted otherwise.

Customer action (Yellow)
Ausgrid action (Grey)

Connection Applicant's Private Installation & Metering
 Connection Applicant's private electrical installation design and construction are not part of the ASP1 connection process.
 However, electrification of the ASP1 works & connection of the premises requires the Connection Applicant to address all private installation technical and safety requirements

Private Installation – documentation review
 At least **6 weeks prior** to proposed electrification date the following private installation items must be submitted to Ausgrid for initial review

- Preliminary Main-switchboard (MSB) drawings and site diagram
- Preliminary Private installation protection grading curves & circuit breaker settings
- Preliminary ISMP & Operating Protocol (for HV connections)
- Preliminary Hazard Dossier for private installation (if applicable)

Submitted min 6 weeks prior to electrification

Private Installation – ready for connection
 At least **2 weeks prior** to proposed electrification date the following private installation items must be **complete and finalised to Ausgrid's satisfaction**.

- Final Main-switchboard (MSB) drawings and site diagram
- Final Private installation protection grading curves & circuit breaker settings
- MSB and con-mains installation complete and terminated on site, ready for inspection and energisation. Ausgrid substations will not be energised without an MSB connected.
- Final ISMP & Operating Protocol (for HV connections)
- Valid CT Metering form(s)
- Valid CCEW and NOSW forms (as applicable)
- Final Hazard Dossier for private installation (if applicable)
- Retailer in place

Finalised min 2 weeks prior to electrification