



NS183

Installation of Private Attachments on Ausgrid Poles

August 2004

Amendments: NSA 1632 Oct 2011



SUMMARY

Network Standard NS183 details the procedures required to ensure that proposals to install third party attachments on Ausgrid's power poles and lighting columns are properly handled and comply with Ausgrid standards.

ISSUE

Ausgrid staff: for issue to all staff involved with

Where this standard is issued as a controlled document replacing an earlier edition; remove and destroy the superseded document.

Accredited Service Providers: document issued on an uncontrolled basis. Users are responsible for ensuring that the document they are using is current and includes any amendments issued since the date on the document. Ausgrid will not accept any liability for work carried out to a superseded standard. Ausgrid may not accept work carried out which is not in accordance with current standard requirements.

Ausgrid maintains a copy of this and other Network Standards together with updates and amendments on www.ausgrid.com.au.

Ausgrid also offers a subscription service which provides for updates and amendments to standards on payment of an annual fee.

DISCLAIMER

As Ausgrid's standards are subject to ongoing review, the information contained in this document may be amended by Ausgrid at any time.

It is possible that conflict may exist between standard documents. In this event, the most recent standard is to prevail.

This document has been developed using information available from field and other sources and is suitable for most situations encountered in Ausgrid. Particular conditions, projects or localities may require special or different practices. It is the responsibility of the local manager, supervisor, contractors and the individuals involved to ensure that a safe system of work is employed and that statutory requirements are met.

Ausgrid disclaims any and all liability to any person or persons for any procedure, process or any other thing done or not done, as a result of this Network Standard.

This document is **not** intended to address issues that include, but are not limited to:

- Environmental and planning requirements
- Construction, inspection and maintenance safe work practices
- Inspection and maintenance requirements
- Emergency preparedness and response
- Earthing and substation layout design

Note: The use of any steelwork in substations have unique requirements with respect to earthing. All designs involving steelwork are to be reviewed by *Network Engineering*.

INTERPRETATION

In the event that any user of this Standard considers that any of its provisions is uncertain, ambiguous or otherwise in need of interpretation, the user should request Ausgrid to clarify the provision. Ausgrid's interpretation shall then apply as though it was included in the Standard, and is final and binding. No correspondence will be entered into with any person disputing the meaning of the provision published in the Standard or the accuracy of Ausgrid's interpretation.

Network Standard
NS183
Installation of Private Attachments on Ausgrid Poles
August 2004

CONTENTS

1	INTRODUCTION	1
1.1	Purpose	1
1.2	Scope	1
1.3	Disclaimer.....	1
2	OTHER RELEVANT STANDARDS	2
3	DEFINITIONS	3
4	RESPONSIBILITIES	4
4.1	Attachment Owner	4
4.2	Customer Supply.....	4
4.3	Local Councils	4
5	ATTACHMENTS	5
5.1	General.....	5
5.2	Private Attachments	5
5.3	Unsuitable Attachments	5
5.4	Signs and Labels.....	6
5.5	Promotional Signs, Banners, and Bunting	7
5.6	Special Small Services.....	8
5.7	Telecommunications	9
5.8	Lighting.....	9
5.9	Cameras.....	10
5.10	Traffic Lights.....	10
5.11	Miscellaneous (unclassified) Attachments	10
5.12	Unauthorised Advertising and Graffiti	11
5.13	Painting of Ausgrid Poles	11
5.13.1	Wood Poles	11
5.13.2	Steel, Concrete, Fibreglass Poles	12
5.13.3	Ausgrid's Policy	12
6	INSTALLATION	13
6.1	General.....	13
6.2	Authority	13
6.3	Pole Inspection.....	13
6.4	Positioning Attachments.....	14
6.4.1	Existing Arrangements	14
6.4.2	Equipping Zone	14
6.5	Securing Attachments	15
6.5.1	Timber Poles	15
6.5.2	Concrete and Steel Poles and Lighting Standards	15
6.5.3	Banners and Bunting.....	16
7	APPROVAL.....	17
8	REFERENCES	18
8.1	Acts and Regulations	18
	APPENDIX A – APPROVED POLE ATTACHMENTS	19
	APPENDIX B – APPROVAL PROCESS (FLOWCHART).....	20
	APPENDIX C – APPLICATION FORM (SAMPLE)	21

APPENDIX D – ATTACHMENT ASSESSMENT CHECK LIST.....	23
APPENDIX E – CORRESPONDENCE	24

1 INTRODUCTION

1.1 Purpose

This Standard specifies the requirements and conditions for approval to install private attachments on Ausgrid poles and street lighting columns.

1.2 Scope

The requirements of this standard apply to timber, concrete and steel poles and lighting columns owned by Ausgrid. Intended users of this Standard include (but not limited to) Ausgrid staff, Accredited Service Providers and contractors, local councils, and statutory authorities.

This Standard applies to all general attachment types, however, additional attachment types may emerge from time to time which are not covered in this Standard. These attachments will need to be assessed and classified by Ausgrid before being incorporated into this Standard.

This Standard does not specify the requirements for pole-mounted communications cabling or mobile telecommunications installations, both of which are covered under separate standards.

In the event that clarification is required, the reader should contact an Ausgrid Customer Supply Office for advice.

1.3 Disclaimer

Ausgrid makes no representations or warranties in relation to the information, recommendations, or standards set out in this document. Before using this document, the prospective Applicant should independently assess the information contained in this document and act in reliance on their own assessment.

Proposed attachments must be approved, in writing, by Ausgrid before installation can proceed. Standing approval may be given for some attachment classes on application, for example, street name signs for local councils. Unless the Asset Owner has an existing general agreement in place a written approval must be given before any equipment is attached to an Ausgrid pole.

2 OTHER RELEVANT STANDARDS

This Network Standard should be read in conjunction with the following documents:

Ausgrid Electricity and Network Standards:

- DG215 Painting of Ausgrid Poles
- NUS100 Field Recording of Network Assets
- NRS102 Working on Poles with Mobile Phone Transmitter Installations
- NUS103 Fire Bans
- NS109 Design Standards for Overhead Developments
- NS145 Pole Inspection and Treatment Procedures
- NUS146 Safety Inspection Procedure for Working on Poles

Other Documents:

- Ausgrid Electrical Safety Rules
- EC 18 – Training of Personnel Working on or near Electricity Works
- NENS 04-2003 National Guidelines for Safe Approach Distances to Electrical Apparatus
- NENS 01-2001 National Electricity Network Safety Code – 01-2002

3 DEFINITIONS

Approved Attachment	An attachment that has been assessed by Ausgrid and satisfies the requirements of Network Standard NS183.
Attachment Owner (AO)	The party legally responsible for any private attachment (authorised or unauthorised) that is installed on an Ausgrid pole
Authorised Personnel	Persons with current Level 1 or 2 accreditation under the NSW Department of Energy, Utilities and Sustainability (DEUS), Customer Connections - Accreditation scheme.
Copper-Chrome Arsenate (CCA) Impregnated Pole	A debarked, naturally round timber pole with the sapwood pressure impregnated with Copper Chrome Arsenate (CCA) timber preservative. CCA poles are greenish colour. The timber from CCA poles must not be burned, as the fumes given off are highly toxic.
Private Attachment	Any pole mounted device that is neither owned by Ausgrid nor installed for an Ausgrid core business purpose.
Promotional Sign/Banner	Any sign or banner that identifies and or promotes non-profit services, events or activities for community information or benefit, or for licensed charities.

4 RESPONSIBILITIES

4.1 Attachment Owner

The *Attachment Owner* must ensure that *Authorised Personnel* as defined in this standard carry out the installation of all *Private Attachments* except general flat signs and labels.

In cases where general flat signs and labels shall be installed, and will be fixed to a pole no higher than 5 metres above ground level, the Attachment Owner may elect to use other suitably qualified personnel to carry out the installation. In this instance, the minimum qualifications and requirements of qualified personnel re:

- An Electrician holding a current "Qualified Supervisor's Certificate - Electrical" (NSW) or equivalent.
- Demonstrated knowledge of pole work safety as detailed in Ausgrid's Network Standard NUS146 Safety Inspection Procedure for Working on Poles.
- Knowledge of other relevant standards listed in Section 2 of this Standard.

4.2 Customer Supply

Ausgrid's Customer Supply Officers are responsible for handling applications for private attachments (except promotional signage) on Ausgrid poles, in accordance with the requirements set out in this standard.

Customer Supply Officers shall ensure that all approvals given for private attachments are recorded in a suitable database or spreadsheet. Pole attachments approved for periods exceeding three months will also need to be recorded in Ausgrid's Network Asset Management System (NAMS) and or Geographic Information System (GIS) databases as applicable. Customer Supply Officers shall forward details of such approvals to the relevant administrators for entry into the system within seven days of granting the approval.

Customer Supply Officers shall also ensure that applications for attachment types not classified in this standard are forwarded to Network Division's Engineering Standards and Research Group for assessment.

4.3 Local Councils

Local Councils are responsible for approving applications to install promotional signs (including banners and bunting) on Ausgrid poles within their designated Areas. Assessment of promotional signs shall be carried by an officer of the council concerned in accordance with the approval criteria set out in this Network Standard. Councils shall also notify Customer Supply of each approval within seven days of issue, and provide the locations and or identification numbers of the poles involved.

Councils must also ensure that only qualified persons meeting the requirements of Clause 4.1 may install or remove promotional signs and banners.

5 ATTACHMENTS

5.1 General

Only *Approved* private attachments are permitted on Ausgrid poles. An attachment is considered *Approved* if it has been assessed by Ausgrid and satisfies the requirements of this Standard. An approved attachment must be authorised in writing by Ausgrid before being installed.

5.2 Private Attachments

All private attachments other than signs and banners must display the attachment owner's contact details in the event that the attachment is damaged or requires removal. A suitable water proof label providing the attachment owner's name and telephone number shall be fixed either directly to the attachment or to the pole adjacent to the attachment. Labels installed on Ausgrid's poles must be secured in accordance with section 6.5 of this standard.

5.3 Unsuitable Attachments

Proposed attachment types not specified in this Standard are considered non-approved attachments until assessed by Ausgrid. Certain attachment types have already been assessed by Ausgrid and classified unsuitable for use on Ausgrid poles. The following attachments are not permitted:

(a) Posters

Wrap-around posters are not permitted on Ausgrid poles under any circumstances. Such posters are typically taped or pasted to poles by or on behalf of clubs, hotels and small businesses to advertise their products and services. Wrap around posters act as a moisture trap that encourages soft rot, which can damage or reduce the life of a pole.

(b) Election Signs

Signs and posters promoting political parties, representatives or candidates during public elections or otherwise are not permitted on Ausgrid poles. The erection of such signs or posters is prohibited under Section 151B of the Parliamentary Electorates and Elections Act 1912 (NSW). Employees and contractors are encouraged to report all instances of election posters on Ausgrid poles to the nearest Customer Supply Office.

(c) Mirrors

Dish mirrors had been installed on some Ausgrid poles in the past to assist heavy vehicles while reversing in traffic blind spot areas. These mirrors have the tendency to reflect light into the eyes of oncoming motorists thereby presenting a potential safety hazard. Future applications to install mirrors will not be accepted.

(d) Garbage bins

Historically, garbage bins were permitted on Ausgrid poles located near shops and bus stops if the pathway was deemed to be particularly narrow. However, a review of access issues for pole treatment personnel concluded that this practice is no longer satisfactory. Future applications to install garbage bins will not be accepted.

(e) Pole to Pole Banners

The installation of banner spans between two (or more) poles or between poles and shopfront awnings is not permitted. Ausgrid poles are not designed to support the large wind forces these installations can produce. Strings of recessed decorative bunting may be installed between poles and shopfront awnings provided it meets the requirements given in Appendix A and is installed in accordance with Section 5.5 of this standard.

5.4 Signs and Labels

Applications to install signs, labels and other non-promotional notices on Ausgrid poles will generally be approved provided the size limits shown in Figure 1 are not exceeded and installation is in accordance with Section 6 of this Standard. Figure 2 shows a typical arrangement of public notice signs.

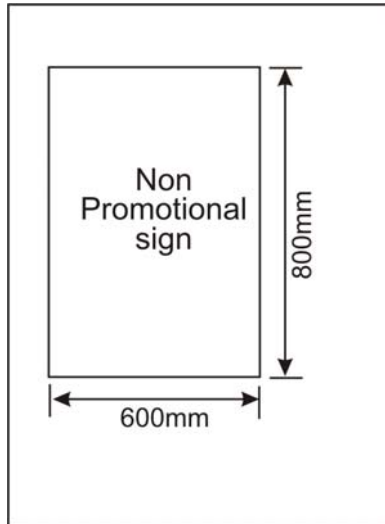


Figure 1: Size limit for non-promotional signs



Figure 2: Typical arrangement of public notice signs

Applications to install larger signs on a temporary basis for special notice or emergency warning purposes will be considered by Ausgrid on a case by case basis. Poles already supporting multiple signs or a combination of signs and other attachments as shown in Figure 3 are not suitable for further attachments.



Figure 3: Unacceptable sign clutter

5.5 Promotional Signs, Banners, and Bunting

Applications to install signs and banners on Ausgrid poles for promotional purposes must be lodged with the relevant Local Council. Ausgrid does not accept applications for promotional attachments.

Promotional content is limited to community activities such as festivals, charity events, and other non-commercial public notices. Advertising of products, commercial services, or any form of political promotion is not permitted.

Signs of a para-commercial nature may be permitted provided the applicant can demonstrate a public benefit outcome and that no business or product names are displayed. Examples of where such signs may be appropriate are private hospitals, veterinary clinics, and public swimming pools.

Promotional signs must be no larger than the size specified in Figure 4. Flexible plastic 'Coreflute' signs, will not be approved except in special circumstances at the discretion of Ausgrid, and in such cases, will only be temporary.

Promotional banners are only permitted on street lighting columns that are designed to accommodate them. Smaller banners or flags may be permitted on other Ausgrid poles (subject to assessment) provided the poles do not support bare overhead mains.

In general, promotional banners must be no larger than the size specified in Figure 5. In cases where larger banners are required, the council assessing the application shall forward the application along with a non-refundable fee of \$120¹ to Ausgrid for a formal assessment. Promotional signs and banners must be installed in accordance with Section 6 of this Standard.

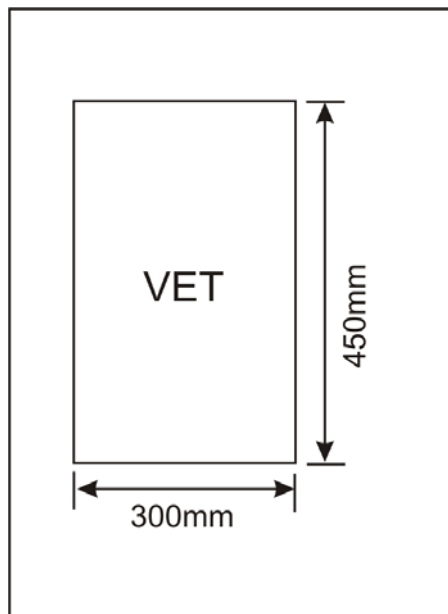


Figure 4: Size limit for Promotional signs

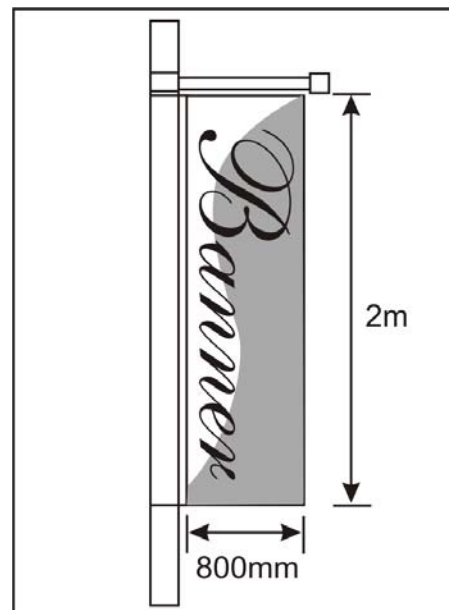


Figure 5: Size limit for promotional banners

¹ Fee is linked to the consumer price index (CPI) and may increase over time

Decorative bunting may be strung across a road way between an individual Ausgrid pole and a shop front awning, provided that:

- There are no overhead mains running along the shop fronts involved
- The bunting meets the criteria set out in Appendix A and is installed in accordance with Section 6 of this standard

A limit of five bunting strings is permitted between a single Ausgrid pole and a set of adjacent awnings as shown in Figure 6.

Decorative bunting shall be installed for temporary periods of up to twelve months. Periods beyond twelve months may be negotiated with Ausgrid.

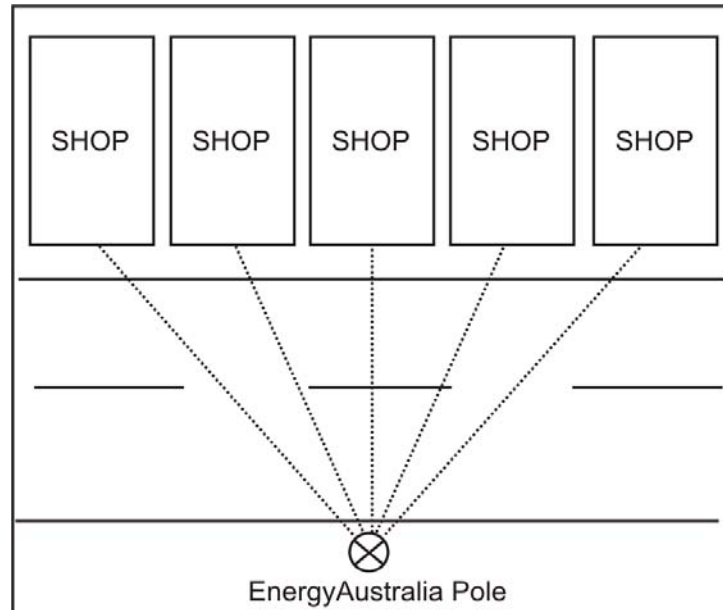


Figure 6: Decorative Bunting Installation with five spans

Bunting shall be for decorative purposes only and must not feature commercial advertisements or company logos unless Ausgrid gives written approval.

Local councils are wholly responsible for installations of promotional signs and banners, be they for themselves or for a third party. No Ausgrid charges will apply to councils installing approved promotional attachments provided the council concerned agrees to keep the pole concerned free of posters and graffiti for the term of the installation.

5.6 Special Small Services

Approved special small services may be installed on a temporary or permanent basis to supply other approved attachments or ancillary services. Special small services must be installed in accordance with Section 5 of the NSW Service and Installation Rules and Section 6 of this Network Standard.

A typical small service installation is shown in Figure 7. A consumer terminal box with an optional general-purpose outlet at the top is shown in Figure 8.



Figure 7: Typical special small service



Figure 8: Consumer terminal box with optional GPO

5.7 Telecommunications

Telecommunications equipment such as microcells and broadband cable services may be installed on Ausgrid poles under a negotiated licensing agreement with Ausgrid. General information on these installations is provided in *NRS 102 Working on Poles with Mobile Phone Transmitter Installations*.

Applications to install telecommunications equipment on Ausgrid poles must be made in writing to Ausgrid's Network Facilities Access Coordinator.

5.8 Lighting

Private flood or spot lighting may be installed on selected Ausgrid poles for security and commercial purposes. Ausgrid's EnergyLight Group designs and installs private lighting under a commercial arrangement with customers. All lighting equipment installed on Ausgrid poles for private lighting remains the property of Ausgrid.

Typical private lighting installations are shown in Figures 9 and 10 below.



Figure 9: Single spot light mounted directly on LV cross arm



Figure 10: Pair of security flood lights mounted on a separate cross arm

5.9 Cameras

Approved video surveillance cameras may be installed on Ausgrid poles provided they are installed in accordance with Section 6 of this Standard. Approved cameras include CCTV, wireless video cameras and ancillary equipment meeting all relevant Australian Standards. A limit of two cameras per pole is permitted provided the cameras are connected to a common control unit and supplied via a single Special Small Service.

Typical surveillance camera installations are shown in Figures 11 and 12.

Approval to install surveillance cameras and associated equipment will only be given provided that the requested pole or column has been inspected by Ausgrid and deemed suitable for this purpose in accordance with Clause 6.2 of this document.

Surveillance cameras shall be supplied from a Special Small Service (see Clause 5.5) that must only be connected to the network by Ausgrid or a Level 2 accredited service provider.



Figure 11: Typical CCT installation



Figure 12: Typical wireless camera installation with mini panel antenna mounted above

5.10 Traffic Lights

Traffic lights may only be installed on Ausgrid poles in special circumstances. Applications will only be accepted from the Road Traffic Authority (RTA), who must demonstrate that the installation of a dedicated RTA pole is either not possible or not practical at the given location.

Customer Supply shall arrange a pole inspection to be carried out by Ausgrid at the RTA's cost before approval can be given. The size, weight, and positioning of street light banks may apply considerable forces on the pole involved. Accordingly, the pole will need to be both visually inspected and mechanically sounded by an approved method as outlined in Network Standard NRS145.

5.11 Miscellaneous (unclassified) Attachments

Unclassified attachments are devices that have not been assessed by Ausgrid and yet to be considered suitable for attachment to poles. Parties seeking to install attachments that are not specified in this Network Standard must provide technical details of the attachment along with the application form.

At a minimum, the information required includes:

- Function of the attachment

- All exterior dimensions
- Total weight
- Power consumption
- Method of attachment
- Duration of the installation

Ausgrid’s Engineering Standards and Research Group shall assess unclassified attachments and arrange for this standard to be updated as applicable.

5.12 Unauthorised Advertising and Graffiti

Graffiti and unauthorised advertising is strictly prohibited on Ausgrid’s poles and lighting columns. Where practicable, Ausgrid staff and contractors are encouraged to remove posters and unauthorised signage from Ausgrid poles. Where this may not be possible for access or safety reasons, the relevant Ausgrid Customer Supply Office should be notified. Contact details for Ausgrid’s Customer Supply Offices are tabled in Section 7 of this Standard.

In cases such as Figures 13 and 14 where the advertiser can be clearly identified, Customer Supply shall send letter US1 (Appendix E) to the advertiser, requesting that the poster or sign be removed and to advise what legal action may be taken.



Figure 13: Typical example of unauthorised advertising signs



Figure 14: Pole with several identifiable advertising signs

Instances of offensive graffiti should be reported to a Customer Supply Office as soon as possible so that arrangements can be made for prompt removal.

5.13 Painting of Ausgrid Poles

5.13.1 Wood Poles

Painting of wood poles is not allowed as it encourages the retention of moisture and provides conditions advantageous for termite infestation and fungi growth. The painting of wood poles hinders Ausgrid’s ability to competently inspect the pole by covering over termite activity and evidence of fungal decay.

Refer to NS 145 - *Pole Inspection and Treatment Procedures* and NS183 - *Installation of Private Attachments on Ausgrid Poles*; both of which state that wood poles must not be painted.

5.13.2 Steel, Concrete, Fibreglass Poles

Steel, concrete, fibreglass and fibre cement (Titan) poles may be painted.

5.13.3 Ausgrid's Policy

Refer to DG215 for Ausgrid's policy on the painting of any Ausgrid poles.

6 INSTALLATION

6.1 General

All attachments must be installed in accordance with the pole types outlined in the sections that follow. Attachments shall be positioned to maintain safe clearances from overhead conductors and in a manner that does not facilitate unauthorised climbing of the pole. In addition, attachments must not obstruct or interfere with the operation or function of existing fixtures.

Where possible all attachments shall be located on the 'down traffic' or footpath side of the pole.

6.2 Authority

Private attachments are not permitted on Ausgrid poles without written authority from Ausgrid. Parties seeking to install private attachments (except for promotional signs and banners) must first apply to Ausgrid for the attachment to be assessed. If the attachment is approved and all applicable terms and conditions are met, authority will be issued for the installation to proceed.

Any private attachments installed without Ausgrid authority will be removed immediately and possible legal action taken against the Attachment Owner where applicable.

6.3 Pole Inspection

Depending on the attachment type, poles may require an inspection by Ausgrid before authority to install approved attachments is given. The inspection shall determine whether the proposed pole is suitable for supporting the attachment.

Factors that influence the inspection are:

- Location of pole
- Pole type and access requirements
- Age and condition of pole
- Existing equipment

A pole inspection is not generally required where small community signs and labels (eg bus stop signs, neighbourhood watch signs, etc) and special small services are concerned. For all other attachments, Ausgrid shall carry out an inspection of the pole to determine its suitability based on the above criteria. In general the following pole types are not suitable for larger signs and electronic attachments:

- High voltage poles (11kV and above)
- Poles with underground to overhead network connections (UGOHs)
- Poles with under slung links, isolating points, and street light control point boxes
- Any other pole that must be climbed on a regular basis for operations or maintenance

In the event that a pole inspection renders a particular pole unsuitable for supporting additional attachments, the closest suitable alternative will be recommended.

Ausgrid shall provide a quote to the customer concerned to cover the cost of the inspection.

6.4 Positioning Attachments

6.4.1 Existing Arrangements

Under existing commercial arrangements between telecommunication carriers and Ausgrid, fixed areas on Ausgrid's distribution poles are generally reserved for broadband and pay TV service cables. For single cable services (Optus) the area measures up to 2.1 m below the king bolt on the lowest cross arm supporting low voltage mains. In many cases an additional cable service (Telstra/Foxtel) may be installed 300mm below the Optus service.

Under these arrangements a minimum clearance of 600 mm shall be maintained between the private attachment lowest broadband service cable where installed.

6.4.2 Equipping Zone

Private attachments must be positioned to maintain satisfactory clearances from telecommunications broadband service cables (where installed) and overhead mains. Given that various possible arrangements exist, pole-equipping zones have been defined to recommend appropriate locations to install private attachments. The equipping zones for a combination of typical pole configurations are shown in Figures 15 to 20 below.

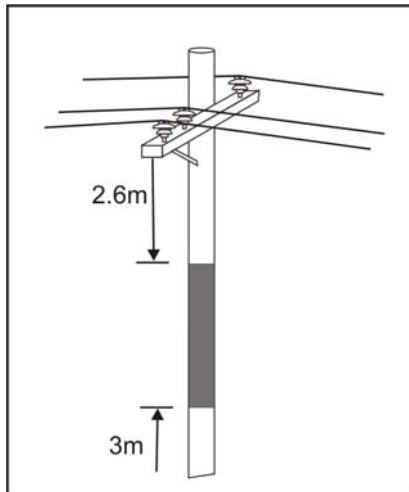


Figure 15: Pole supporting bare HV mains only

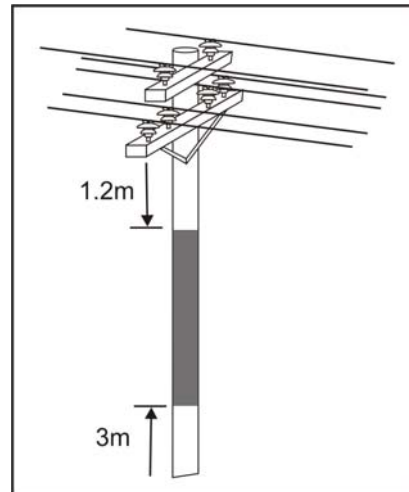


Figure 16: Pole supporting bare HV and or LV mains

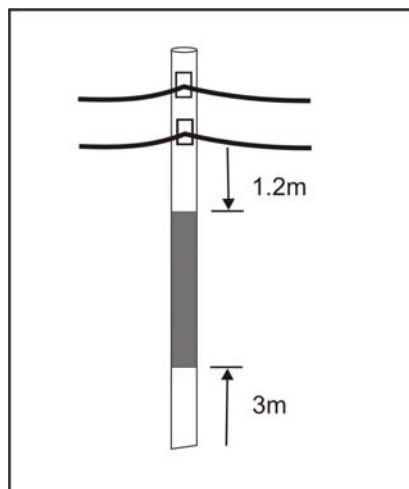


Figure 17: Pole supporting HV and/or LV ABC mains

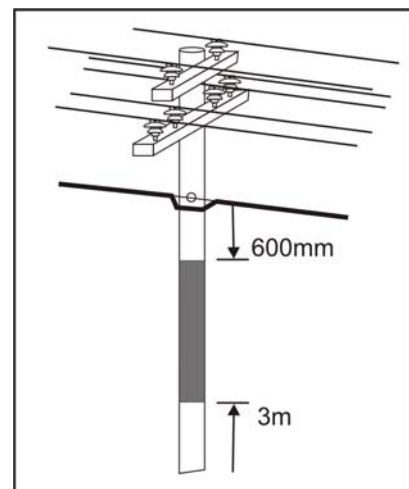


Figure 18: Pole supporting HV and/or LV mains and single or double broadband cables

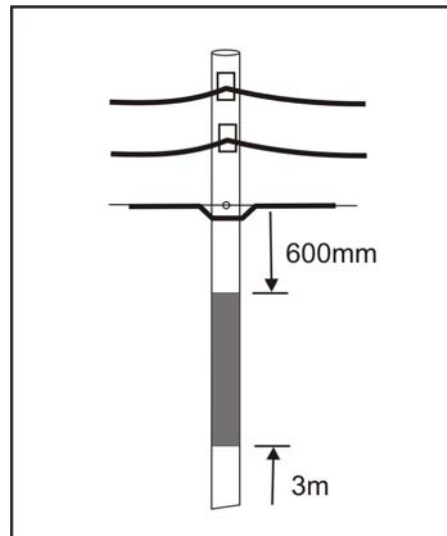


Figure 19: Pole supporting LV ABC and single or double broadband cables

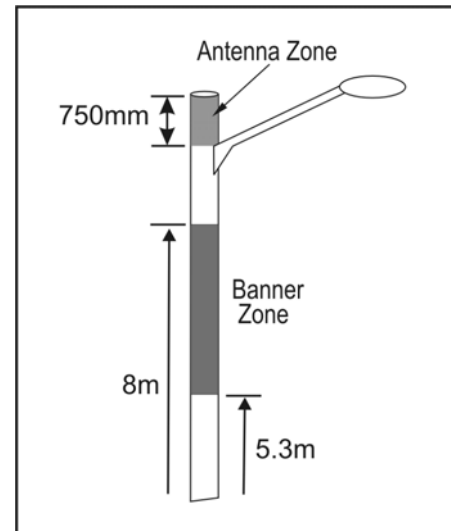


Figure 20: Lighting column supporting a banner or maroccell antenna

The equipping zones given in Figures 15 to 20 above do not apply to private lighting installations which are installed in accordance with EnergyLight's design criteria. In general, private lighting is secured directly to the pole cross arm or to an outreach arm mounted near the top of the pole. For lights fixed directly to the pole, the method of securing the lighting shall be in line with Section 6.5.

6.5 Securing Attachments

6.5.1 Timber Poles

All attachments on timber poles shall be secured using galvanised steel clout nails or coach screws, driven their full depth into the pole. Persons installing the attachment shall ensure that the nails or screws used are sufficient to provide adequate support for the attachment.

Note: Steel band clamps must not be used to secure attachments to timber poles.

Special care must be taken when drilling holes in CCA treated 'green' poles to avoid contact with the toxic dust or fumes. Appropriate safety ware including glasses, gloves and a Class P2 or P3 particulate respirator must be worn at all times while drilling CCA treated poles.

6.5.2 Concrete and Steel Poles and Lighting Standards

All attachments on concrete and steel poles and columns shall be secured using approved stainless steel band clamps.

Note: Concrete and steel poles must not be drilled to secure attachments.

Figure 21 is a typical example of a sign secured to a concrete column with stainless steel band clamps. Signs installed on a temporary basis shall be secured in the same manner as permanent signs. The use of plastic cable ties, wire, or other inappropriate means is not permitted. Figure 22 is an example of a sign secured using nylon 'zip' lock ties, which may be prone to rotating in windy conditions.



Figure 21: Road sign secured to a concrete column with stainless steel band clamps



Figure 22: Sign inappropriately secured using plastic cable ties

6.5.3 Banners and Bunting

Banners should only be installed on lighting columns or poles **not** supporting bare overhead mains.

Banners must be installed on an approved bracket², with the upper end secured at both corners and the lower end anchored to the pole via an approved breakaway device, at the inside corner.

Banners are typically attached to steel (and concrete) poles or lighting columns as shown in Figures 23 and 24. In special circumstances banners may also be installed on timber poles, providing the poles are not supporting bare overhead mains and the pole has been assessed and deemed suitable for the purpose.

Banners installed on poles or columns along public roadways must be attached such that the base of the banner is at least 5.3m above the roadway in accordance with the Roads and Traffic Authority of New South Wales's requirements.



Figure 23: Banner support arm secured with approved stainless steel band clamps



Figure 24: Banner base anchor secured with approved stainless steel band clamps

² Supplied by Selby's Pty Ltd or equivalent

7 APPROVAL

Proposed private attachments must meet Ausgrid approval before authority to install them may be given.

The approval process is as follows:

- (a) The proposed attachment must be an approved type as detailed in Section 5 and tabled in Appendix A of this Standard. Attachments neither listed in Appendix A nor classified *unsuitable* (Section 5.2) shall be deemed *unclassified* and will need to be assessed by Ausgrid.
- (b) Parties seeking to install attachments (except for promotional signs and banners) must lodge an Application form with an Ausgrid Customer Supply Office for processing. Applications for promotional attachments must be lodged with the relevant Local Council who will be responsible for the installation. Application forms (Appendix C) are available from the Ausgrid Customer Supply Offices listed in Table 1.
- (c) The Applicant may arrange installation once authority to install an attachment is received in writing from Ausgrid. Installation must be carried out by an approved person and in line with the Installation criteria of Section 6 of this Standard. Installations not meeting these criteria will be removed immediately and authority cancelled.

Table 1 – Ausgrid Customer Supply Offices

Ausgrid Supply Area	Customer Supply Office Locations
Upper Hunter Serving the following Council Areas: <i>Muswellbrook, Scone, Singleton</i>	Thomas Mitchel Drive MUSWELLBROOK NSW 2333 Telephone: 6542 9024
Newcastle and Lower Hunter Serving the following Council Areas: <i>Cessnock, Lake Macquarie, Maitland, Newcastle, Port Stephens</i>	Building Block A 145 Newcastle Road WALLSEND NSW 2287 Telephone: 4951 0101
Central Coast Serving the following Council Areas: <i>Gosford and Wyong Shire.</i>	Erina Plaza Shop 11-14 210 The Entrance Road ERINA NSW 2250 Telephone: 4325 8588
Sydney North Serving the following Council Areas: <i>Hornsby, Ku-ring-gai, Lane Cove, Manly, Mosman, North Sydney, Pittwater, Ryde, Warringah, Willoughby.</i>	Customer Supply Building 1\51-59 Bridge Road HORNSBY NSW 2077 Telephone: 9477 8221
Sydney South Serving the following Council Areas: <i>Ashfield, Auburn, Bankstown, Botany Bay, Burwood, Canada Bay, Canterbury, City of Sydney, Hurstville, Kogarah, Leichhardt, Marrickville, Randwick, Rockdale, Strathfield, Sutherland, Waverley, Woollahra.</i>	Building 2\33-45 Judd Street OATLEY NSW 2223 Telephone: 9585 5601

8 REFERENCES

8.1 Acts and Regulations

This is not a full listing and should be used as a guide only.

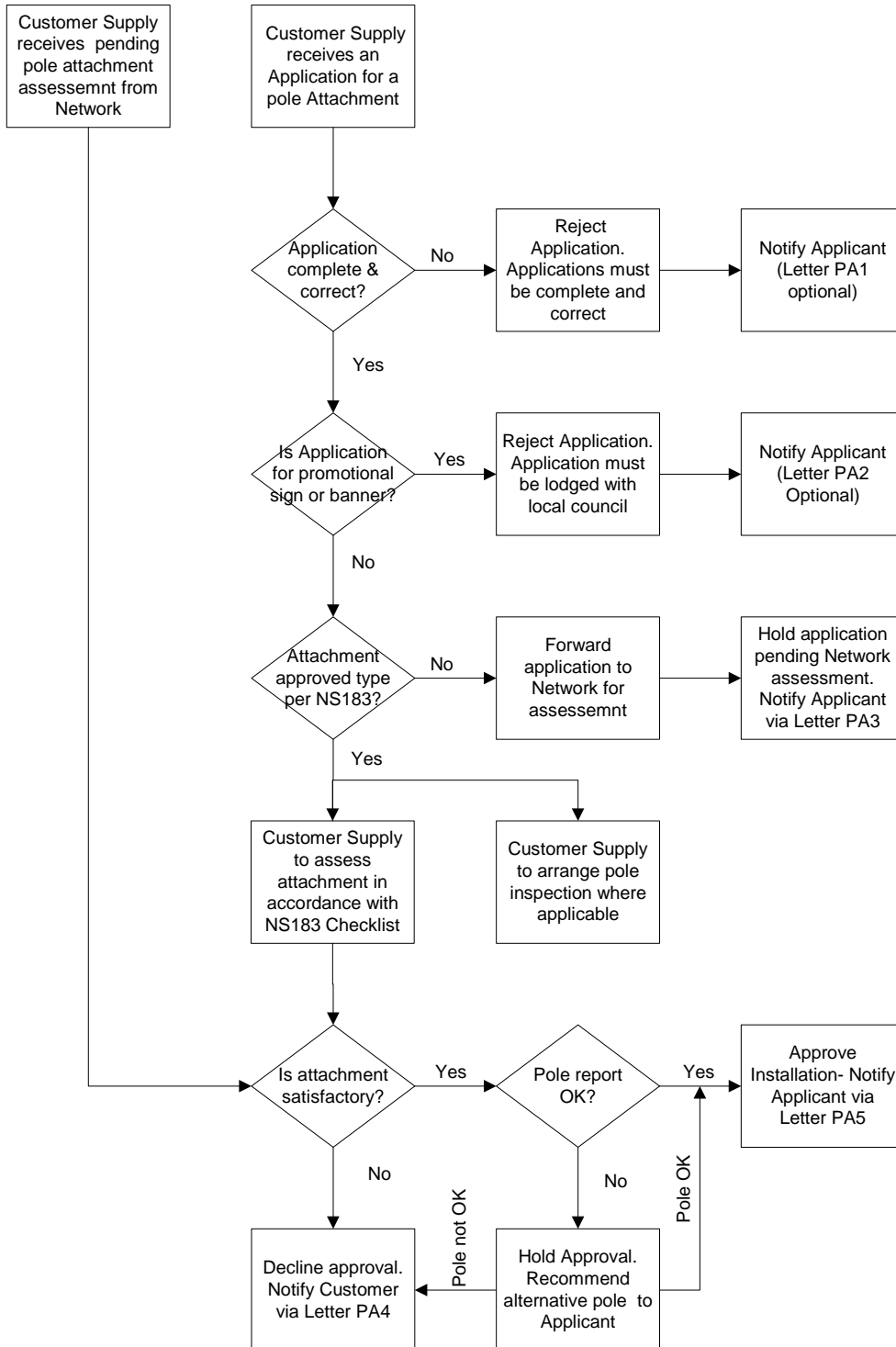
- Electricity Safety Act 1945
- Occupational Health and Safety Act 2000
- Electricity Supply (Safety and Network Management) Regulation 2002
- Occupational Health and Safety Regulation 2001
- Electrical (Installation Safety) Regulation 1992
- All other pertinent Environmental Regulations and Acts.

Appendix A – Approved Pole Attachments

Attachment Type	Limits			Approval Criteria/Examples
	Height (cm)	Width (cm)	No. Units*	
Flat Sign/Label – Permanent	80	60	1	<ul style="list-style-type: none"> Steel or aluminium sheet only Traffic speed limit signs Bus stop signs (private and public) Hydrant Labels
Large Flat Sign/Label - Temporary	by negotiation	by negotiation	1	<ul style="list-style-type: none"> Customer Supply assessment RTA road works/diversion sign
Promotional sign	45	35	1	<ul style="list-style-type: none"> Steel or aluminium sheet only Veterinary Surgery Private Hospital Rotary/Lions Clubs Neighbourhood Watch signs
Promotional banner - General	200	80	1	<ul style="list-style-type: none"> Temporary period up to 3 months Carnivals Charity Events Cultural Festivals
Promotional Banner - Special Large	300	100	1	<ul style="list-style-type: none"> Approval subject to Ausgrid assessment Approved break-away bracket required
Decorative Bunting	30	-	5	<ul style="list-style-type: none"> 100 micron plastic 80% recess cuts at 25mm spacing
Camera	-	-	2	<ul style="list-style-type: none"> Closed-circuit video Wireless video
RTA digital traffic counter			1	<ul style="list-style-type: none"> Poles not supporting overhead mains Temporary installations - various
RTA traffic lights	-	-	1	<ul style="list-style-type: none"> Only if no feasible alternative exists Full pole inspection required
Special small service	-	-	1	<ul style="list-style-type: none"> Weather proof Clipsal or equivalent
Telecommunications microcell	-	-	1	<ul style="list-style-type: none"> Output in accordance with ARPANSA Radiation Protection Standard 2002 Ericsson Metrosite
Telecommunications microcell antenna	-	-	2	<ul style="list-style-type: none"> Omni (whip), Pad Appropriate radiation warning and power down instruction labels to be installed
Telecommunications macrocell antenna/parabolic dish	-	-	2	<ul style="list-style-type: none"> In accordance with ARPANSA Radiation Protection Standard 2002 Appropriate radiation warning signs to and carrier contact details to be installed

* per pole per applicant

Appendix B – Approval Process (Flowchart)



Appendix C – Application Form (Sample)

Application to Install Private Attachments on EnergyAustralia Poles

1. Attachment Details

Attachment type

Sign/Label¹ Camera Lighting Other

¹ Non-commercial signs only. Promotional signs and banners are assessed and approved by the relevant local council.

Pole ID Number and Location

Pole No²

Pole Location (Street, Suburb, house number)

² EnergyAustralia poles are labelled with a seven-digit pole ID number (eg. AB12345)

NOTE: Technical Details for the proposed attachment must be provided on the form overleaf

2. Applicant Details

Applicant Name in full

Business Name & ABN

Address

Telephone

E-mail (Optional)

Contractor[†] Name and ABN

Telephone

Installation Period

Commencing

Application Date

Signature

[†]Required if the applicant is engaging a contractor to install the attachment(s)

EnergyAustralia Office Use

1. Attachment Approved: Yes/No 2. Applicant notified: Yes/No 3. Copy of Approved Application to Network: Yes/No

Approving Officer (Print Name) _____

Date: _____

Technical Information

1. Flat Rectangular Sign/Label

Length (cm)	Width (cm)	Weight (kg)	Material (eg metal, plastic, wood)
<input style="width: 90%;" type="text"/>	<input style="width: 90%;" type="text"/>	<input style="width: 90%;" type="text"/>	<input style="width: 98%;" type="text"/>

2. Camera

Type (CCT, wireless)	Manufacturer	Model	No Units		
<input style="width: 95%;" type="text"/>	<input style="width: 95%;" type="text"/>	<input style="width: 95%;" type="text"/>	<input style="width: 95%;" type="text"/>		
Interface - Manufacturer	Model	Length(cm)	Width(cm)	Depth(cm)	Weight(kg)
<input style="width: 95%;" type="text"/>	<input style="width: 95%;" type="text"/>	<input style="width: 95%;" type="text"/>	<input style="width: 95%;" type="text"/>	<input style="width: 95%;" type="text"/>	<input style="width: 95%;" type="text"/>
Antenna - Type	Make & Model				
<input style="width: 95%;" type="text"/>	<input style="width: 95%;" type="text"/>				
Special Small Service - Make & Model				Attachment Total Power (watts)	
<input style="width: 95%;" type="text"/>				<input style="width: 95%;" type="text"/>	

3. Other Attachments

For all other attachments please complete the details below and provide a sketch showing all relevant dimensions for each system component.

Description

Purpose

List all items below if the Attachment is a system comprising separate components (eg 1.camera, 2. interface, 3. antenna)

Item(s)*	Manufacturer	Model	Length(cm)	Width(cm)	Depth(cm)	Weight(kg)
<input style="width: 95%;" type="text"/>	<input style="width: 95%;" type="text"/>	<input style="width: 95%;" type="text"/>	<input style="width: 95%;" type="text"/>	<input style="width: 95%;" type="text"/>	<input style="width: 95%;" type="text"/>	<input style="width: 95%;" type="text"/>
<input style="width: 95%;" type="text"/>	<input style="width: 95%;" type="text"/>	<input style="width: 95%;" type="text"/>	<input style="width: 95%;" type="text"/>	<input style="width: 95%;" type="text"/>	<input style="width: 95%;" type="text"/>	<input style="width: 95%;" type="text"/>
<input style="width: 95%;" type="text"/>	<input style="width: 95%;" type="text"/>	<input style="width: 95%;" type="text"/>	<input style="width: 95%;" type="text"/>	<input style="width: 95%;" type="text"/>	<input style="width: 95%;" type="text"/>	<input style="width: 95%;" type="text"/>
<input style="width: 95%;" type="text"/>	<input style="width: 95%;" type="text"/>	<input style="width: 95%;" type="text"/>	<input style="width: 95%;" type="text"/>	<input style="width: 95%;" type="text"/>	<input style="width: 95%;" type="text"/>	<input style="width: 95%;" type="text"/>

Small Service manufacturer & model	<input style="width: 95%;" type="text"/>	Total power consumption (watts)	<input style="width: 95%;" type="text"/>
------------------------------------	--	---------------------------------	--

Sketch or specification of device attached? Yes No → please provide sketch in space below

Appendix D – Attachment Assessment Check List

This check sheet is to be completed by Ausgrid Customer Supply Staff authorised to assess applications for private attachments on Ausgrid poles.

Part A – Promotional Signs and Banners

1. Is Application from the relevant local council?
 - Yes → Inform the council that they are responsible and issue a copy of NS183 for reference
 - No → Refer applicant to relevant local council

Part B – All other Attachments

1. Applicant has correctly completed Application Form with all relevant information?
 - Yes → Go to Item 2
 - No → Reject Application; Notify Applicant (Appendix E - Letter GA1(optional))
2. Attachment complies with requirements of Appendix A of NS183 or has been assessed and approved Suitable by Network?
 - Yes → Go to Item 3
 - No, because it is an *Unsuitable* attachment → Reject Application; Notify Applicant (Appendix E – Letter GA4)
 - No, because it is an *Unclassified* attachment → Forward Application to Network for Assessment. Notify Applicant (Appendix E – Letter GA3). Hold Application until assessed by Network.
3. Notify Applicant that installation is approved subject to signing of Terms & Conditions. Forward Letter GA5 to Applicant and hold Application until receipt of signed agreement.
4. Applicant agrees to Terms & Conditions of Letter GA5 and has signed it before a witness
 - Yes → Go to Item 5
 - No → Authority rejected, notify Applicant
5. Update Customer Supply records with application approval and attachment details.

Appendix E – Correspondence

General Applications

Letter GA1 - Application Incomplete

Letter GA2 - Council Referral

Letter GA3 - Approval Pending

Letter GA4 - Application Rejected

Letter GA5 - Application Approved

Unauthorised Signage

Letter US1 - Notice to remove unauthorised advertisement or notice

[Letter GA1]

Date

Title

[Company]

Address

Salutation

I refer to your application dated [] to install [] on
Ausgrid's [] located [].

Your application can not be processed at this stage because it is either incomplete or has been incorrectly filled in. Please carefully check your application to ensure it is complete and that all the required information is included before you resubmit it.

Further information about pole attachment requirements and approval is provided in Ausgrid's Network Standard NS183, available at Ausgrid's Customer Supply Branches or at Ausgrid's Web Site at www.ausgrid.com.au

If you have any questions regarding the Application, please contact [] on
[] for assistance.

Yours Sincerely

Ausgrid Letterhead

[Letter GA2]

Date

Title

[Company]

Address

Salutation

I refer to your application dated [] to install [] on Ausgrid's
[] located [].

Ausgrid does not accept applications for promotional attachments. Applications to install promotional signs, flags, and banners on Ausgrid poles will only be accepted by the relevant city or municipal council. If the council concerned agrees to your proposal, then they will assess your attachment to ensure that it conforms to Ausgrid's technical criteria before issuing approval.

Please note that Ausgrid does not permit advertising of products or commercial services on poles.

To avoid possible delays, please carefully check your application to ensure it is complete and that all the required information is included before you submit it.

Further information about pole attachment requirements and approval is provided in Ausgrid's Network Standard NS183, available at Ausgrid's Customer Supply Branches or at Ausgrid's Web Site at www.ausgrid.com.au

If you have any questions regarding the Application, please contact [] on
[] for assistance.

Yours Sincerely

[Letter GA3]

Date

Title

[Company]

Address

Salutation

I refer to your application dated [] to install [] on Ausgrid's
[] located []

The attachment you are applying to install is not an Ausgrid approved attachment type and therefore needs to be assessed to determine whether it meets the required standards.

In the event that your application is rejected, you will be notified of the reason and whether or not the proposed attachment (or method of installation) may be modified to meet the requirements.

If you wish to have the attachment re-assessed, a non-refundable payment of \$120.00* must be made to Ausgrid to cover the cost of the assessment. The follow up assessment should be completed within fourteen days of the re-submission.

Further information about pole attachment requirements and approval is provided in Ausgrid's Network Standard NS183, available at Ausgrid's Customer Supply Branches or at Ausgrid's Web Site at www.ausgrid.com.au

If you have any questions regarding the Application, please contact [] on
[] for assistance.

Yours Sincerely

Ausgrid Letterhead

[Letter GA4]

Date

Title

[Company]

Address

Salutation

I refer to your application dated [] to install [] on Ausgrid's
[] located [].

Your proposed attachment has been assessed in accordance with Ausgrid's technical standards and found to be unsuitable for installation on Ausgrid poles.

Further information about pole attachment requirements and approval is provided in Ausgrid's Network Standard NS183, available at Ausgrid's Customer Supply Branches or at Ausgrid's Web Site at www.ausgrid.com.au

If you have any questions regarding the Application, please contact [] on
[] for assistance.

Yours Sincerely

[Letter GA5]

Date

Title

[Company]

Address

Salutation

I refer to your application dated [] to install [] on Ausgrid's [] located [].

Your proposed [] been assessed in accordance with Ausgrid technical standards and found to be satisfactory for installation on Ausgrid poles.

Authority to install the [] will become effective once Ausgrid receives the signed conditions form (attached).

If you have any questions regarding the Application, please contact [] on [] for assistance.

Yours Sincerely

[Letter GA5/B]

**AGREEMENT OR UNDERTAKING INDEMNIFYING AUSGRID IN RESPECT OF
USE OF POWER POLES & STREET LIGHTING COLUMNS FOR PRIVATE
ATTACHMENTS**

In consideration of Ausgrid permitting the attaching and fixing or otherwise of any private attachment described in the Schedule hereto to or upon the Ausgrid's power and street lighting poles.

I/We _____ of _____
(Applicant) (Company/Council/Authority)

hereby agree and undertake:

1. To remove the attachment within twenty four (24) hours of being notified by Ausgrid and in case of failure to comply with such notice Ausgrid may remove the same and thereupon I/We agree to pay all charges and costs therefore including charges for removing and storing the same.
2. Accept all liability of every kind whatsoever for anything that may arise out of or be in any way connected with the installation, operation or removal by the applicant of any attachment on Ausgrid's poles or columns.
3. Recognise that Ausgrid in any emergency shall have the right to remove the attachment without giving prior notice, and without incurring any liability of any kind whatsoever.
4. Indemnify Ausgrid against any claims of any kind whatsoever from any person, firm or corporation who may in any respect whatsoever sustain or claim to have sustained any damage of any kind arising out of the installation of the attachment.
5. Will insure in a company and insure Ausgrid against all claims and demands whatsoever in respect of the fixing or use of the said power and street lighting poles as set out in the schedule hereto (including location of proposed consents or other objects, etc).

THE SCHEDULE ABOVE, REFERRED TO

Location of proposed attachment(s)

Description of proposed attachment(s)

Name of Insurance Company

Policy No

SIGNED

ADDRESS

DATE

WITNESS

Ausgrid Letterhead

[Letter US1/A]

Date

Title

[Company]

Address

Salutation

ADVERTISEMENTS OR NOTICES ON AUSGRID POWER POLES

Your business appears to be associated with the advertisements or notices described on the attached form.

Ausgrid is taking action to stop the unsightly, destructive and dangerous practice of using power poles for purposes of advertising or giving notices to the public.

The placing of advertisements or notices on poles tends to shorten the service life of a wooden power pole by causing wood rot and termite infestation. In some circumstances, such an advertisement or notice constitutes a danger for persons who have to climb poles.

Ausgrid hereby serves you with the attached notice.

If you have any questions regarding this notice, please contact [] on [] for assistance.

Yours faithfully

[Letter US1/B]

NOTICE TO REMOVE ADVERTISEMENTS OR NOTICES FROM POWER POLES
Electricity Supply Act 1995, Section 49

Ausgrid requires you within 14 days of the date of this notice to remove each of the advertisements or notices and any hazard related to the placing of the advertisement or notice and make good any damage caused to the power pole.

If the advertisement or notice is not removed, Ausgrid may carry out the work and recover these costs as a debt. The estimated cost per pole is \$ [*current estimate*]

Date of notice: []

Person to whom notice directed: [*Proprietor or company name appearing on advertisement or notice*]

Description of advertisement or notice: []

Locations of each advertisement or notice: [1.]

(repeat as required) [2.]



© Ausgrid.

This document must not be reproduced in whole or in part or converted to machine readable form or stored in a computer or imaging system without the written permission of Ausgrid.

	Revision History
Initial issue:	23/08/2004

	Document Control
Authorised By: Craig Moody	Date:23/08/2004
Manager Network Engineering	
Document Number:	NS183