

EXAMPLES OF QUESTIONS USED IN PRE-SELECTION TEST FOR ENERGYAUSTRALIA APPRENTICESHIPS - QUESTIONS

The following problems are representative of the standard that is required for successful completion in the pre-selection test. This test is to be used to determine eligibility for interview for the Apprenticeships in EnergyAustralia.

1. $\frac{1}{3} + \frac{2}{5} = ?$

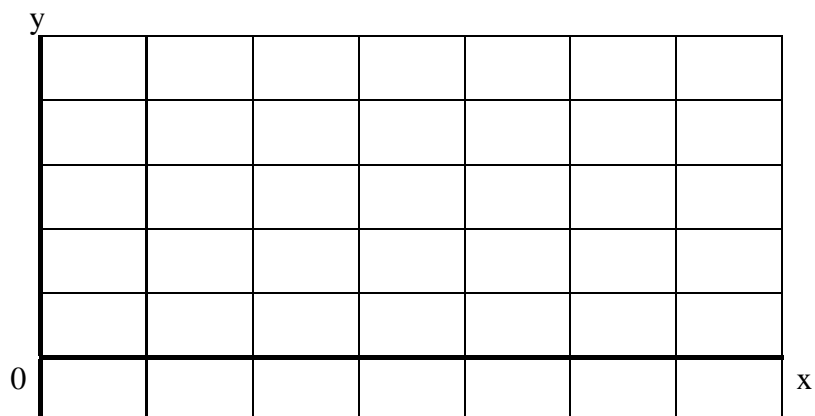
2. 52 divided by 0.5 = ?

3. $(x-2)(3x-3) = ?$

4. Express in scientific notation
0.0000643

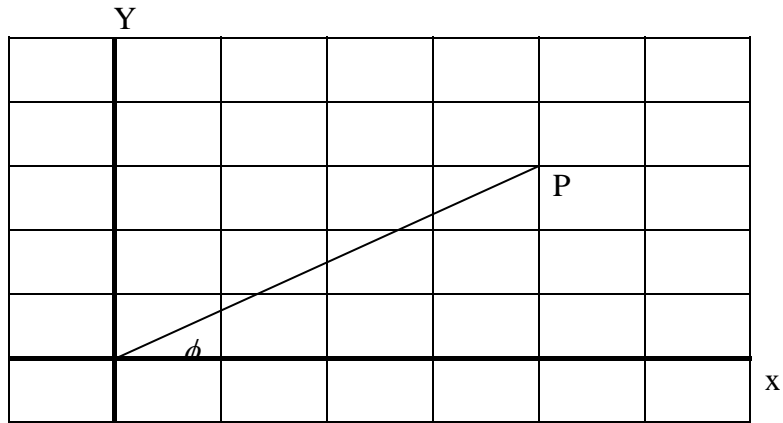
5. The area of the triangle OPQ in square units is:-

$O = (0,0)$ $P = (3,4)$ $Q = (5,0)$



6. If $y = 6x + c$, then $x = ?$

7. What is $\sin \phi = ?$ as a decimal
 $P = (4,3)$



8. Simplify:

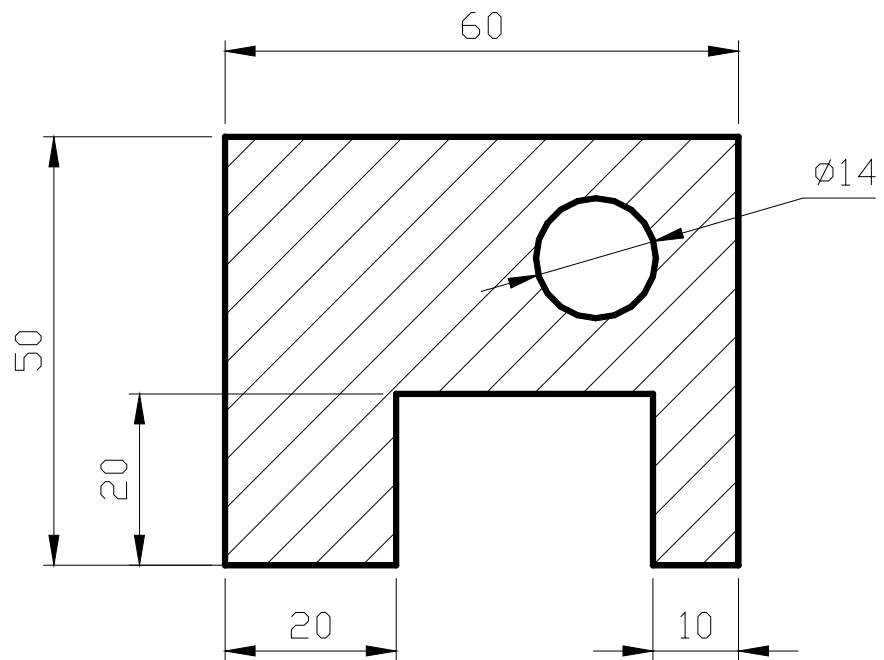
$$10^{-4} \times 10^6$$

9. A car travels 42kms in 20 minutes. What is the average speed in km/hour ?

10. Given $A = 3B(2+D)$. Make D the subject of the formula.

11. Given the formula $\frac{1}{S} = \frac{1}{A} + \frac{1}{B}$, calculate the value of A when $S = 3$ and $B = 4$.

12. Calculate the area in square millimetres of the shaded portion of the sheet of steel shown.
(All dimensions are in millimetres and $\pi = 22$ divided by 7)



13. A crank wheel of a bicycle has 48 cogs and the back sprocket wheel has 12 cogs. How many revolutions per minute does the crank wheel have to be turned so that the sprocket wheel rotates at 80RPM ?