
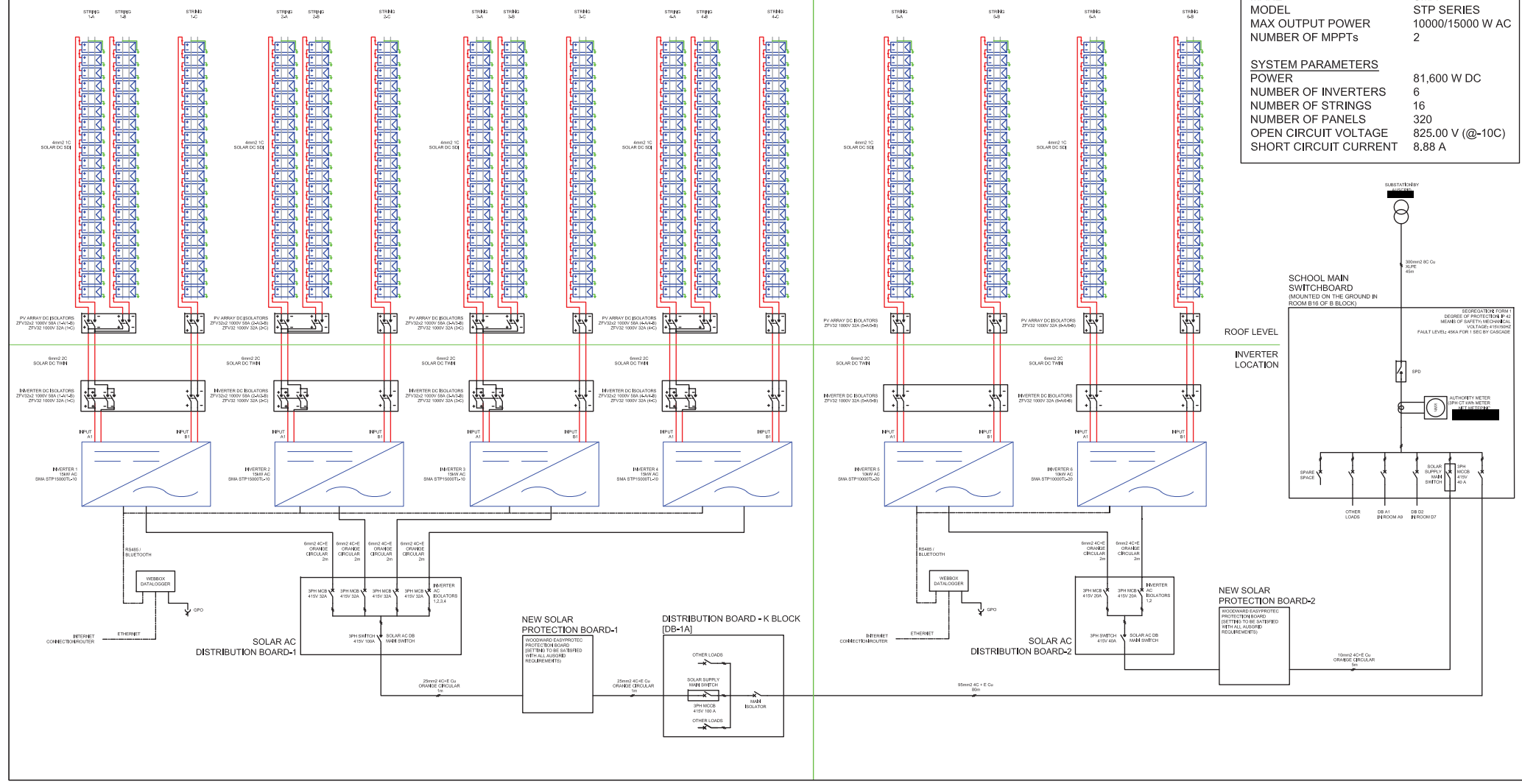


- 
1. Technology: Solar PV
 2. Maximum Power: 80 kW
 3. Contribution to fault levels: N/A
 4. Size & rating of the relevant Transformer: N/A
 5. Single line diagram: refer to following page
 6. Protection Systems & Communication Systems: refer to following page
 7. Voltage Control and reactive power capability: N/A
 8. Details specific to the location of facility: N/A

PANEL PARAMETERS	
MAKE	CSUN
MODEL	CSUN255-60P-A
PANEL POWER	255 W DC
OPEN CIRCUIT VOLTAGE	37.5 V (@STC)
SHORT CIRCUIT CURRENT	8.88 A
STRING PARAMETERS (LARGEST)	
PANELS PER STRING	20
STRING POWER	5,100 W DC
OPEN CIRCUIT VOLTAGE	825.00 V (@-10C)
SHORT CIRCUIT CURRENT	8.88 A
INVERTER PARAMETERS	
MAKE	SMA
MODEL	STP SERIES
MAX OUTPUT POWER	10000/15000 W AC
NUMBER OF MPPTs	2
SYSTEM PARAMETERS	
POWER	81,600 W DC
NUMBER OF INVERTERS	6
NUMBER OF STRINGS	16
NUMBER OF PANELS	320
OPEN CIRCUIT VOLTAGE	825.00 V (@-10C)
SHORT CIRCUIT CURRENT	8.88 A

K BLOCK
ROOF LEVEL

B BLOCK
ROOF LEVEL



This drawing is the property of Artemis Energy Solutions Pty Ltd and may not be copied in whole or in part without the express written consent of Artemis Energy Solutions Pty Ltd.

STATUS:	PRELIMINARY
PROJECT TITLE:	[REDACTED]
PROJECT LOCATION:	[REDACTED]
DRAWING TITLE:	ELECTRICAL SCHEMATIC
PROJECT CODE:	AESS151236
DATE:	26/11/2015
DESIGN FOR GCA	
REVISION DESCRIPTION	
DRWN BY	
CHKD BY	
APPR BY	

PROJECT TITLE:	[REDACTED]
PROJECT LOCATION:	[REDACTED]
DRAWING TITLE:	ELECTRICAL SCHEMATIC
PROJECT CODE:	AESS151236
DWG NUMBER:	AESS151236-02

SHEET:	1 OF 1
SCALE:	NTS
REVISION:	A
SHEET SIZE:	A3

1 2 3 4 5 6 7 8

A A

B B

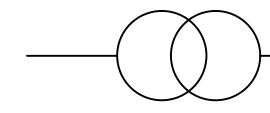
C C

D D

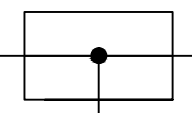
E E

F F

UTILITY
SUPPLY

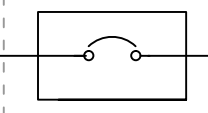


MSB
Main Switch Board



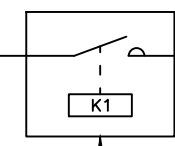
LOAD

MAIN SWITCH

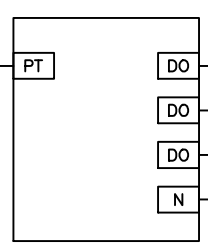


SCOPE OF SUPPLY

K1
CONTACTOR



EP
EASYPROTEC



READY LIGHT
TRIP LIGHT

INDICATION LIGHTS LOCATED ON
PANEL DOOR

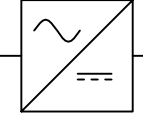
INV1

INV2

INV3

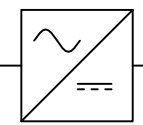
INV4

SOLAR
INVERTER



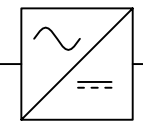
PV CELL
SUPPLY

SOLAR
INVERTER



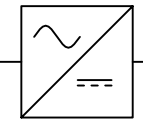
PV CELL
SUPPLY

SOLAR
INVERTER



PV CELL
SUPPLY

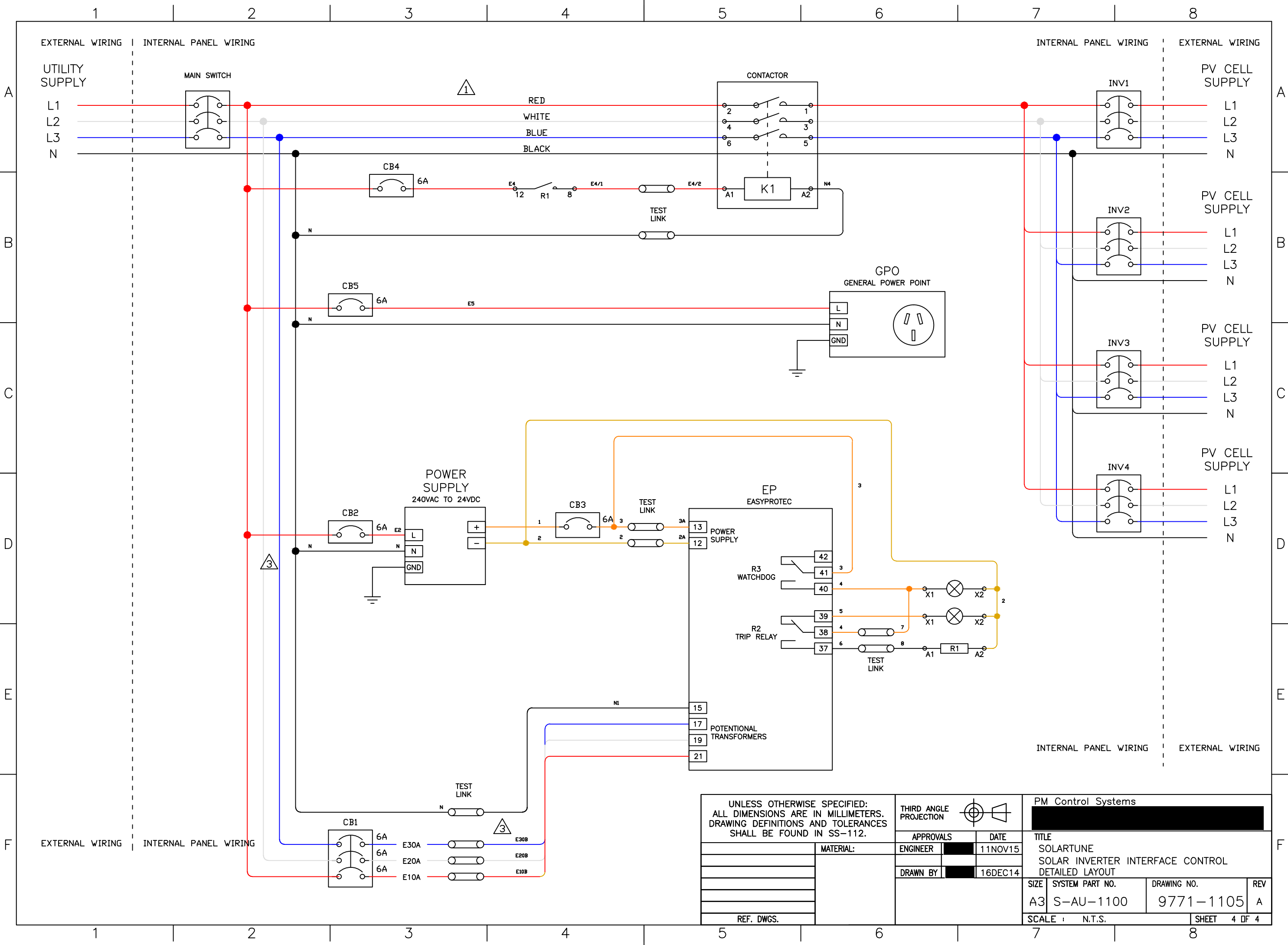
SOLAR
INVERTER



PV CELL
SUPPLY

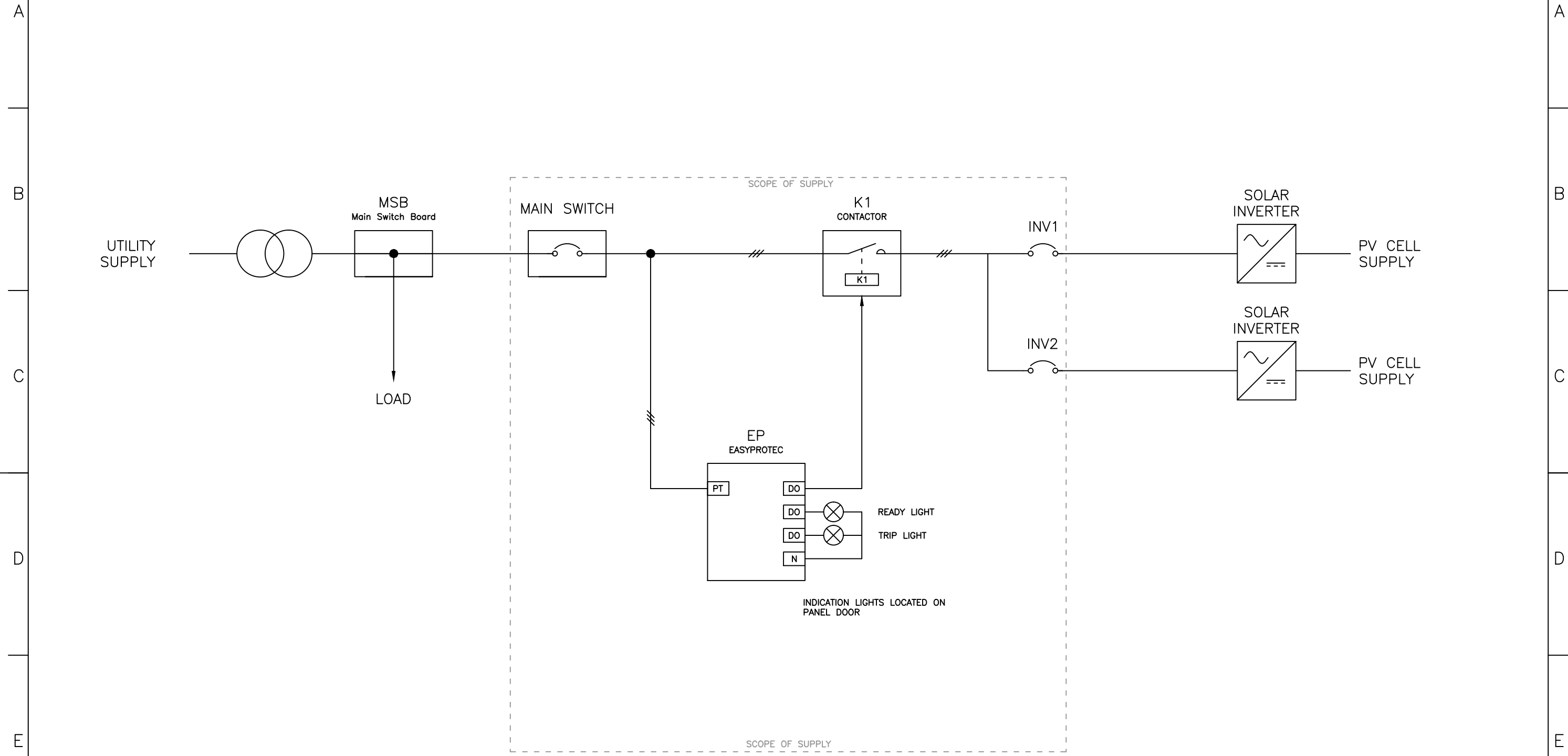
UNLESS OTHERWISE SPECIFIED: ALL DIMENSIONS ARE IN MILLIMETERS. DRAWING DEFINITIONS AND TOLERANCES SHALL BE FOUND IN SS-112.		THIRD ANGLE PROJECTION				PM Control Systems 	
		APPROVALS		DATE		TITLE	
MATERIAL:		ENGINEER		11NOV15	SOLARTUNE		
		DRAWN BY		16DEC14	SOLAR INVERTER INTERFACE CONTROL		
				SYSTEM OVERVIEW		SIZE	REV
REF. DWGS.						A3	A
				SCALE : N.T.S.		SHEET 3 OF 4	

1 2 3 4 5 6 7 8



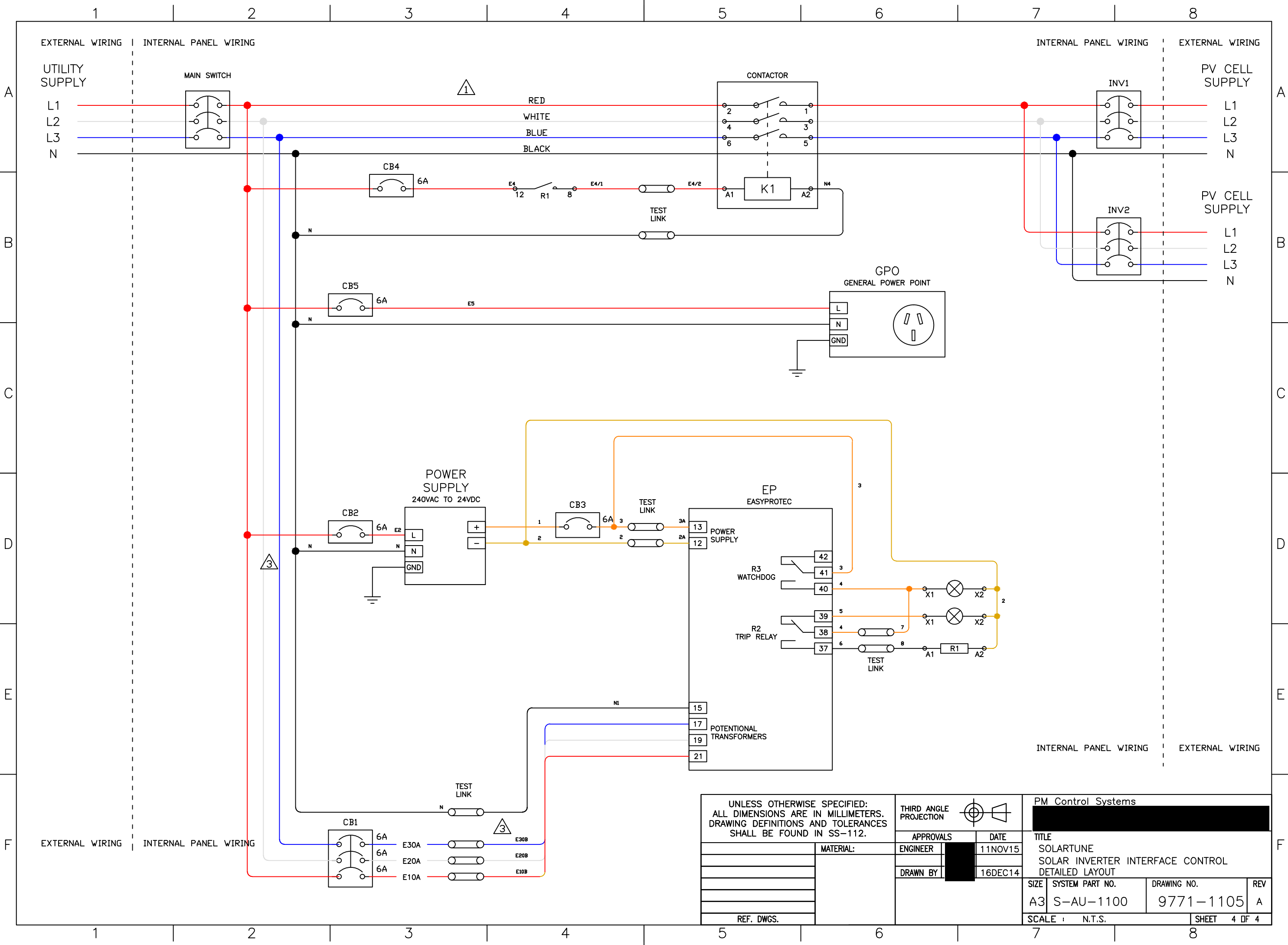
UNLESS OTHERWISE SPECIFIED: ALL DIMENSIONS ARE IN MILLIMETERS. DRAWING DEFINITIONS AND TOLERANCES SHALL BE FOUND IN SS-112.		THIRD ANGLE PROJECTION		PM Control Systems 	
		APPROVALS ENGINEER DATE 11NOV15		TITLE SOLARTUNE SOLAR INVERTER INTERFACE CONTROL DETAILED LAYOUT	
MATERIAL:		DRAWN BY 16DEC14		SIZE A3	SYSTEM PART NO. S-AU-1100
REF. DWGS.		SCALE : N.T.S.		DRAWING NO. 9771-1105	REV A
				SHEET 4 OF 4	

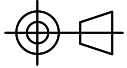



1 2 3 4 5 6 7 8



UNLESS OTHERWISE SPECIFIED: ALL DIMENSIONS ARE IN MILLIMETERS. DRAWING DEFINITIONS AND TOLERANCES SHALL BE FOUND IN SS-112.		THIRD ANGLE PROJECTION		PM Control Systems 	
		APPROVALS ENGINEER 11NOV15 DRAWN BY 16DEC14		TITLE SOLARTUNE SOLAR INVERTER INTERFACE CONTROL SYSTEM OVERVIEW	
MATERIAL:		SIZE A3		SYSTEM PART NO. S-AU-1100	
REF. DWGS.		DRAWING NO. 9771-1105		REV A	
SCALE : N.T.S.				SHEET 3 OF 4	

1 2 3 4 5 6 7 8



UNLESS OTHERWISE SPECIFIED: ALL DIMENSIONS ARE IN MILLIMETERS. DRAWING DEFINITIONS AND TOLERANCES SHALL BE FOUND IN SS-112.		THIRD ANGLE PROJECTION 		PM Control Systems 	
		APPROVALS ENGINEER:  DATE: 11NOV15		TITLE SOLARTUNE SOLAR INVERTER INTERFACE CONTROL DETAILED LAYOUT	
MATERIAL:		DRAWN BY:  DATE: 16DEC14		SIZE: A3 SYSTEM PART NO.: S-AU-1100 DRAWING NO.: 9771-1105 REV: A	
REF. DWGS.		SCALE: N.T.S.		SHEET 4 OF 4	