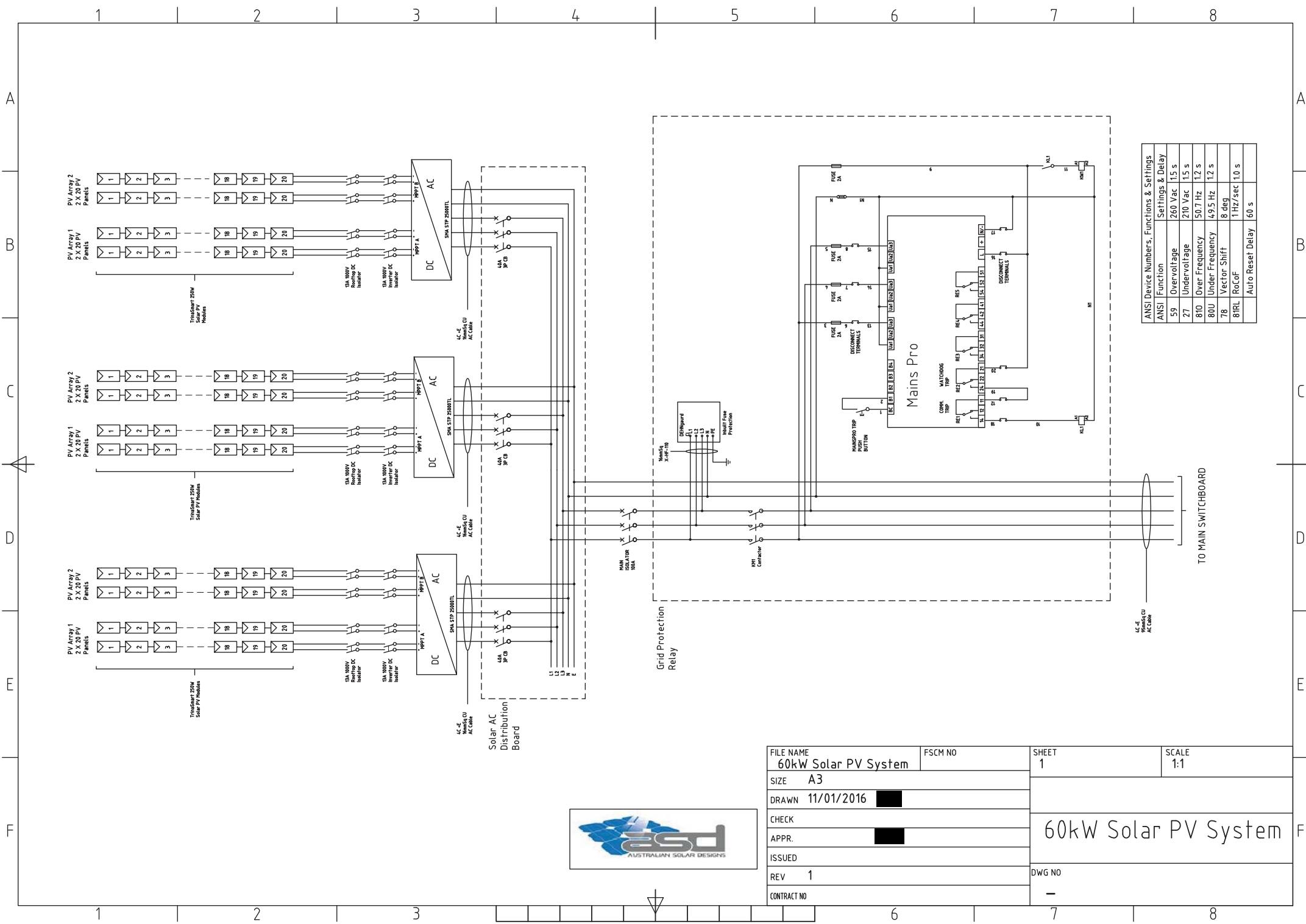




1. Technology: Solar PV
2. Maximum Power: 60 kW
3. Contribution to fault levels: N/A
4. Size & rating of the relevant Transformer: N/A
5. Single line diagram: refer to following page
6. Protection Systems & Communication Systems: refer to following page
7. Voltage Control and reactive power capability: N/A
8. Details specific to the location of facility: N/A



ANSI	Function	Settings & Delay
59	Overvoltage	260 Vac 1.5 s
27	Undervoltage	210 Vac 1.5 s
810	Over Frequency	50.7 Hz 1.2 s
80U	Under Frequency	49.5 Hz 1.2 s
78	Vector Shift	8 deg
81RL	RoCoF	1 Hz/sec 1.0 s
	Auto Reset Delay	60 s

FILE NAME 60kW Solar PV System	FSCM NO	SHEET 1	SCALE 1:1
SIZE A3		60kW Solar PV System	
DRAWN 11/01/2016			
CHECK			
APPR.			
ISSUED			
REV 1		DWG NO	
CONTRACT NO			





## Library of Setpoints

### For Mainspro

	DEFAULT SETTINGS	INSTALL SETTINGS
Uin	230/400	
System	3PH	
DisoT [min]	2 mins	
Auto FR	Disabled	
Auto FR Del [s]	0	
Start Trip	Disabled	
Imp Len [s]	I	
Bak Trp Del [s]	0	
Ext	Enable	
F.R	Enable	
Alt	Disable	
Disable	Disabled	
V>	270V	260V
V> Del	1 sec	1.5 sec's
V>>	0	
V>> Del	0 sec	
V<	203V	210V
V< Del	1.5 sec	1.5 sec's
V<<	0	
V<< Del	0 sec	
Avg V> [V]	0	
RstV>, V>> [%V>]	0	
RstV<, V<< [%V<]	0	
V unb, A.V unb [V]	0	
V< pos, A.V < pos [V]	0	
V> neg, A.V> neg [V]	0	
Du del, A.dU del [s]	0	

		DEFAULT SETTINGS	INSTALL SETTINGS
F>		50.7 Hz	50.7 HZ
F>	Del	1 sec	1.2 SECS
F<		49.5 Hz	49.5 HZ
F<	Del	1 sec	1.2 SECS
F>>		0	
F>>	Del	0	
Rstf>, f>> [%f>]		0	
RSTF<, f<<		0	
VS lim, A.VS lim [ <sup>0</sup> ]		12	8
ROCOF, A.ROCOF [Hz/s]		1 Hz	1 HZ / SEC
ROCOF filt, A.ROCOF Filt [-]		50	
LOM Init Del, A.LOM Init Del[s]		2 sec	
LOM Trip Del, A.LOM Trip Del[s]		2 sec	
BI1:Ext		BI1 = Ext	
BI2:F.R		BI2 = N/A	
BI3:Alt		BI3 = N/A	
BI4:Dis		BI4 = N/A	
Default Settings		RE1:!CommTrpPer RE2:!InternFail RE3:!BackTrpImp RE4:!InternFail RE5:TrpEndImp	