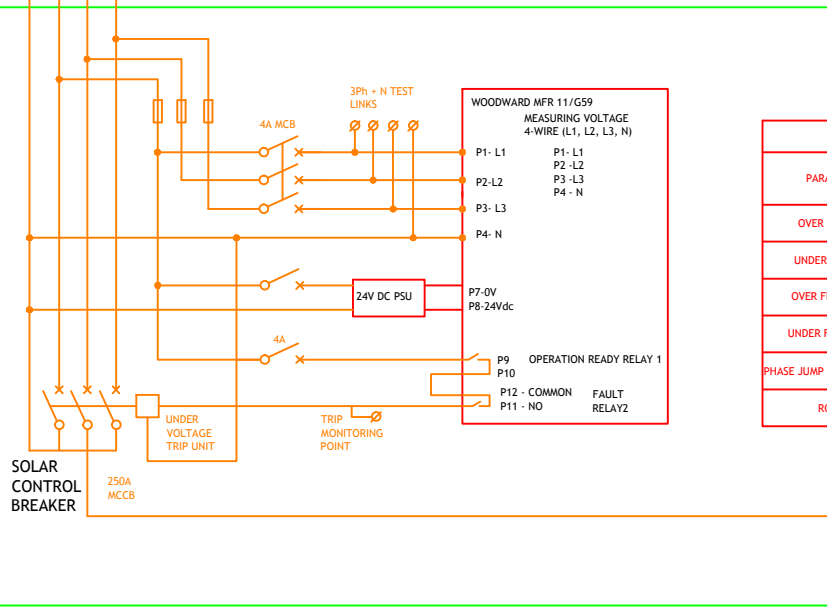
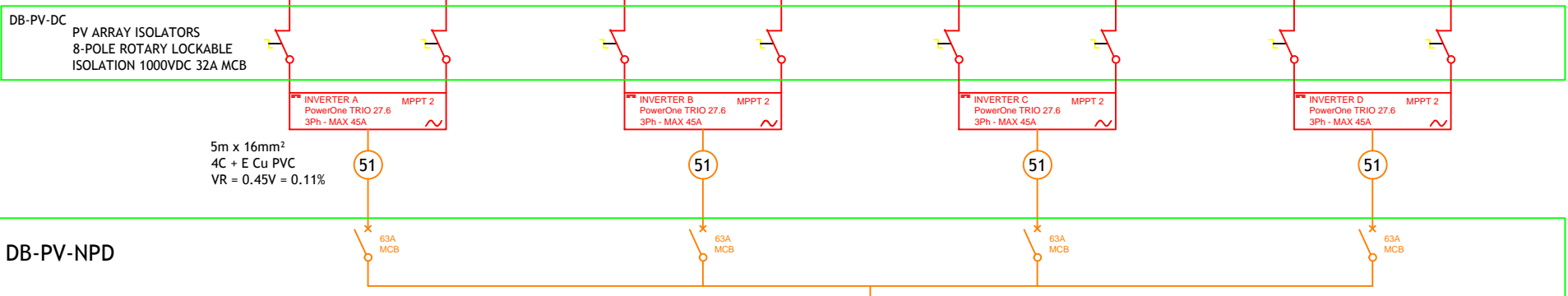
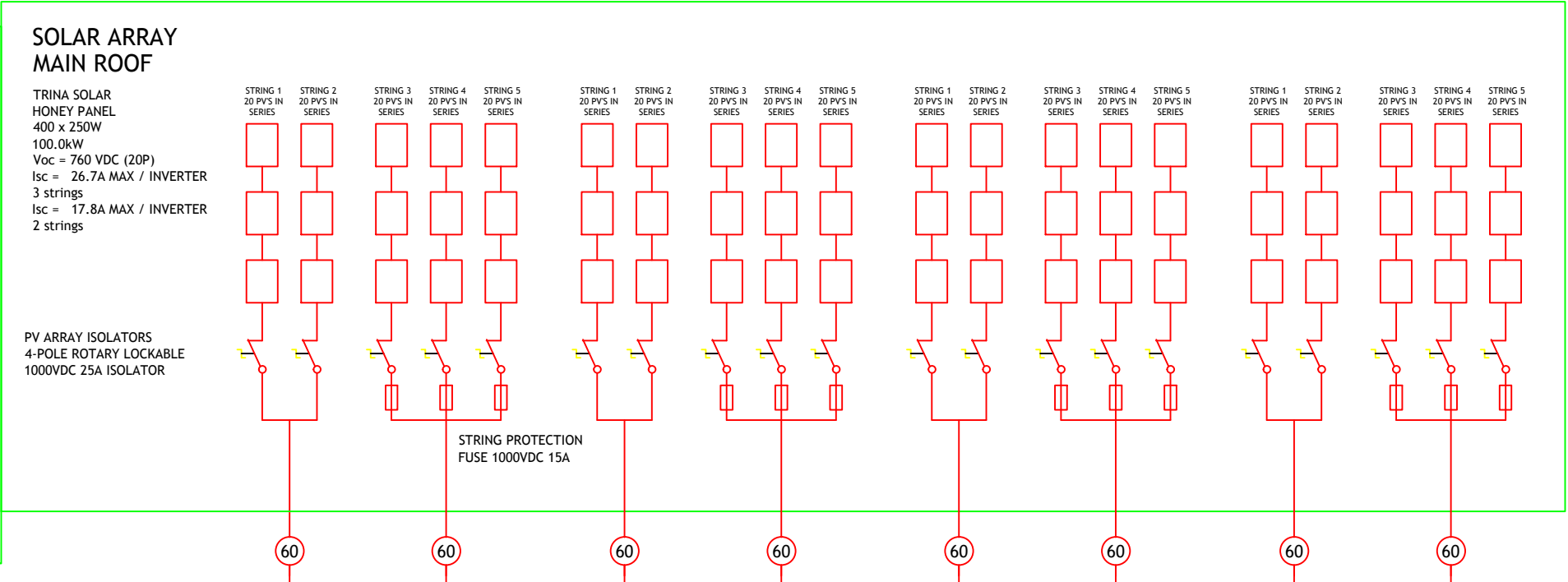
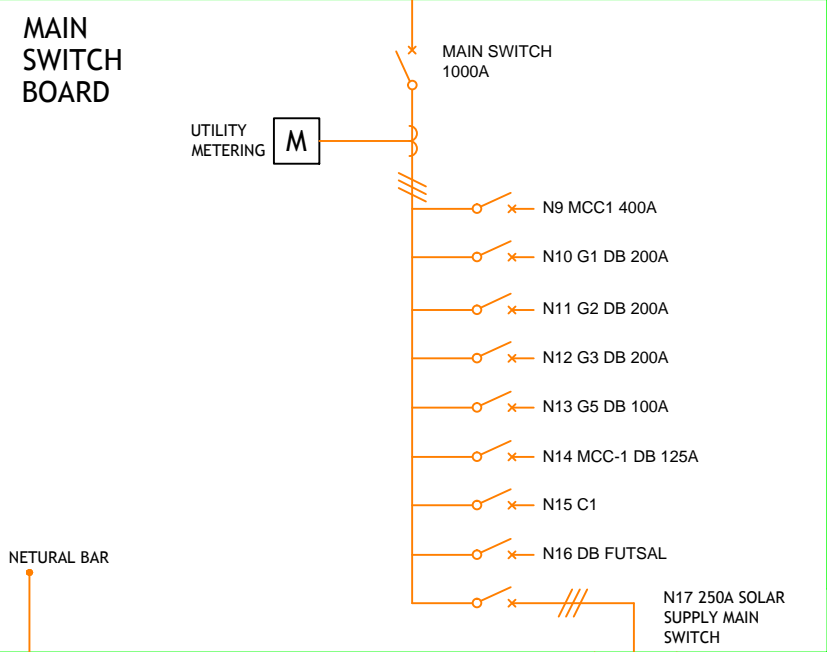
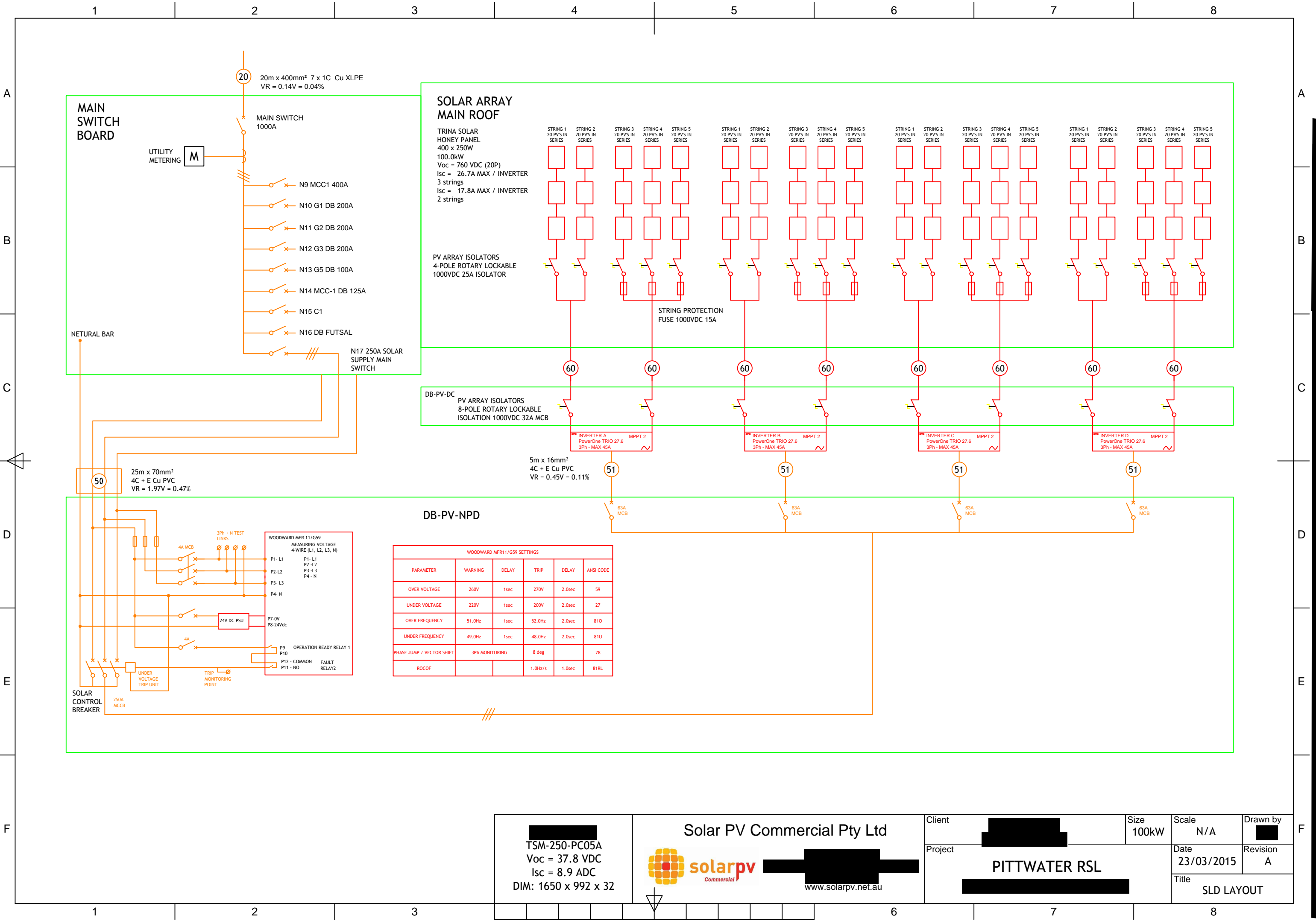




1. Technology: Solar PV
2. Maximum Power: 110.4kW
3. Contribution to fault levels: N/A
4. Size & rating of the relevant Transformer: N/A
5. Single line diagram: refer to following page
6. Protection Systems & Communication Systems: refer to following page
7. Voltage Control and reactive power capability: N/A
8. Details specific to the location of facility: N/A



**WOODWARD MFR11/G59 SETTINGS**

PARAMETER	WARNING	DELAY	TRIP	DELAY	ANSI CODE
OVER VOLTAGE	260V	1sec	270V	2.0sec	59
UNDER VOLTAGE	220V	1sec	200V	2.0sec	27
OVER FREQUENCY	51.0Hz	1sec	52.0Hz	2.0sec	81O
UNDER FREQUENCY	49.0Hz	1sec	48.0Hz	2.0sec	81U
PHASE JUMP / VECTOR SHIFT	3Ph MONITORING		8 deg		78
ROCOF			1.0Hz/s	1.0sec	81RL

<p><b>TSM-250-PC05A</b> Voc = 37.8 VDC Isc = 8.9 ADC DIM: 1650 x 992 x 32</p>	<p><b>Solar PV Commercial Pty Ltd</b> www.solarpv.net.au</p>	Client	Size 100kW	Scale N/A	Drawn by
		Project	PITTWATER RSL		Date 23/03/2015
			Title		SLD LAYOUT