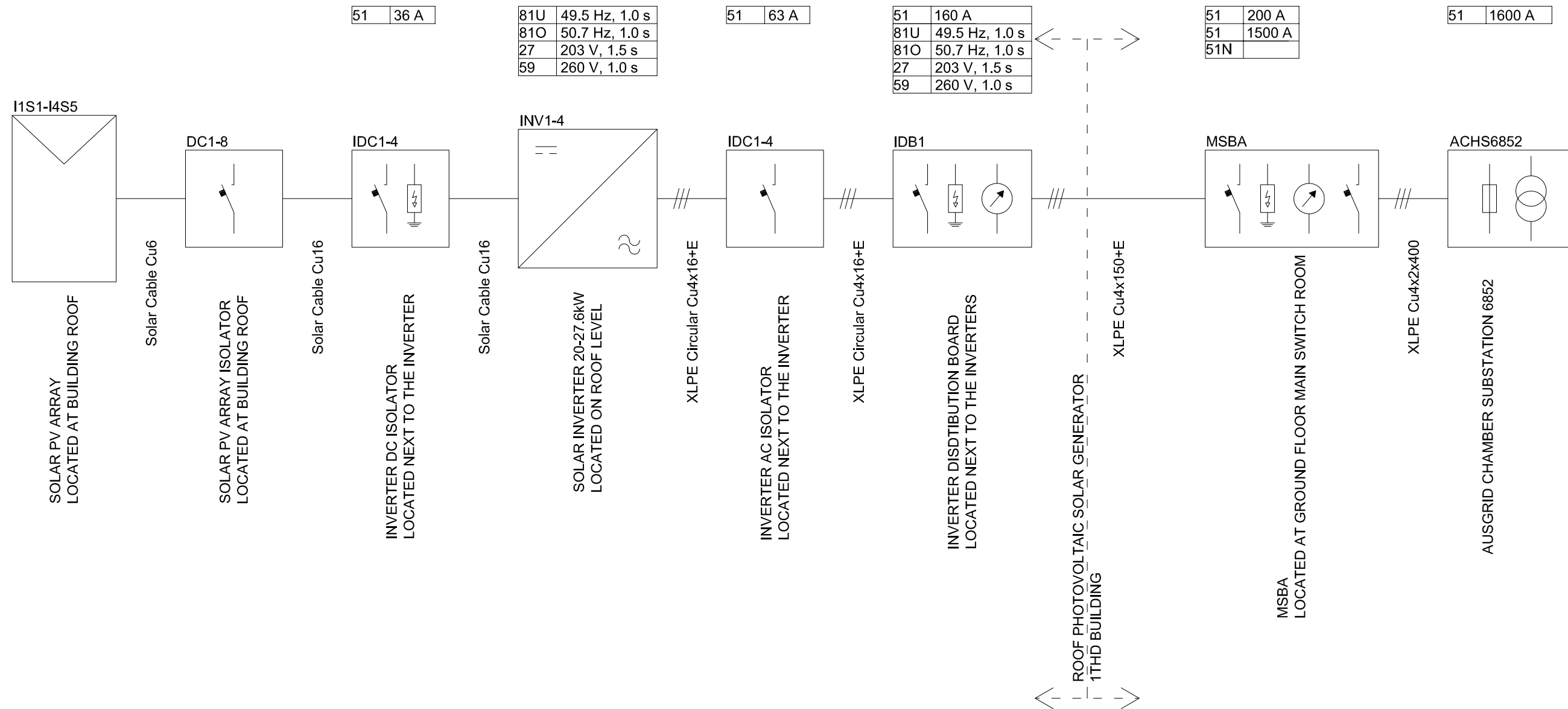




1. Technology: Solar PV
2. Maximum Power: 94kW three phase
3. Contribution to fault levels: N/A
4. Size & rating of the relevant Transformer: N/A
5. Single line diagram: refer to following page
6. Protection Systems & Communication Systems: refer to following page
7. Voltage Control and reactive power capability: N/A
8. Details specific to the location of facility: N/A



Installed power 99.84 kWp
Energy yield 132 MWh/anum

- 384 PV modules 260 Wp
- 8 Array Isolators
- 4 DC/AC Inverter Isolators
- 2 Inverters Power-One TRIO-20.0-TL-OUTD-400
- 2 Inverters Power-One TRIO-27.6-TL-OUTD-400
- 1 Inverter Distribution Board

ANSI Schedule	
51	Overcurrent
51N	Earth fault
81U	Under-frequency
81O	Over-frequency
27	Under-voltage
59	Over-voltage

INVERTER AND CABLE CHANGE		25.2.2015
FOR CLIENT REVIEW		23.12.2014
Drawn	Approved	
Project	PHOTOVOLTAIC SYSTEM	
Part	Electrical services	
Drawing Title	Protection scheme	
Drawing No.	PEA-1309-026-331	Rev B1