



A similar cable project in progress

### Project update

Ausgrid has finalised its plans to lay new 11,000 Volt underground cables between Arncliffe and Rockdale, and our contractor UEA will soon start work.

As outlined in our June newsletter, our substation in Barden Street, Arncliffe is nearing the end of its service life and needs to be retired.

The new cables will allow us to transfer the power supply from Arncliffe to a new substation in Bryant Street, Rockdale. Once the cables are installed and connected, we will retire the Arncliffe substation.

A map of the cable route is on the back page. The new cables will be mainly laid in streets along the route with one rail crossing and a small section in the Rockdale Women's Sports Fields. In some locations, existing conduits (plastic pipes) will be used, requiring only a small amount of excavation.

Construction is expected to start in October 2017 and should be finished in late 2019, however work to install the cables in streets should be finished in mid 2018.

There will be some further activities to cross the rail line and retire Arncliffe substation and this will extend into 2019.

### Community involvement

Since our last newsletter, Ausgrid has been liaising with the community and key stakeholders about the project.

This process involved seeking community feedback on the proposed cable route and construction process. All feedback has been considered by Ausgrid in the preparation of the project's detailed plans.

Community information sessions were held in Arncliffe and Rockdale as part of the community engagement process, as well as meetings with Bayside Council, businesses and residents. Information was also provided to your local MPs.

Thank you to those who have provided feedback. The main area of community interest was around construction impacts and how Ausgrid will manage them. More information about this can be found over the page.

### Key dates

#### January–August 2017

Investigating route options, obtaining community and stakeholder feedback and preparing an environmental assessment

#### Now

Project approved for construction, contractor appointed and construction program prepared

#### September–October 2017

Site investigations to further assess ground conditions and locate existing underground services

#### October 2017

Target start of construction

#### Mid 2018

Finish installing cables in streets

#### Late 2018 and into 2019

Install cables under rail line and retire Arncliffe substation

#### Late 2019

Target project completion

## What to expect during construction

Below is a summary of the types of activities you can expect to see during construction.

### Site investigations

Our contractor will undertake site investigations along the cable route to assess ground conditions and locate existing underground utility services. This work will help confirm the final position of the new cables in the road and the location of associated pits.

### Trenching and laying conduits (plastic pipes)

The most common activity will be digging 1.5 metre wide trenches in roads and laying conduits to house the new cables. There will be a number of crews doing this work at multiple locations.

The trenching will start once site investigations have finished. Typically, trenching and temporary restoration takes about three days outside each property, depending on the ground conditions.

### Joint bays and associated pits

Underground joint bays will be excavated approximately every 250m to 500m along the route. These will be used to pull through and join sections of cable together.

Each joint bay will be about 1.5 metres wide and 5 metres long and take between 3 and 5 weeks to build. In some locations, new cables will be installed into existing conduits. This will involve digging pits to expose the conduits and pulling the cables through.

The project team will discuss the proposed location of the joint bays and pits with surrounding neighbours after the contractor has prepared their construction plans.

### Installing cables

Once the joint bays and pits have been built, we will lay the cables. This will involve transporting the cables to the joint bay and pit locations on cable drums and pulling them into the conduits.

### Rail crossing

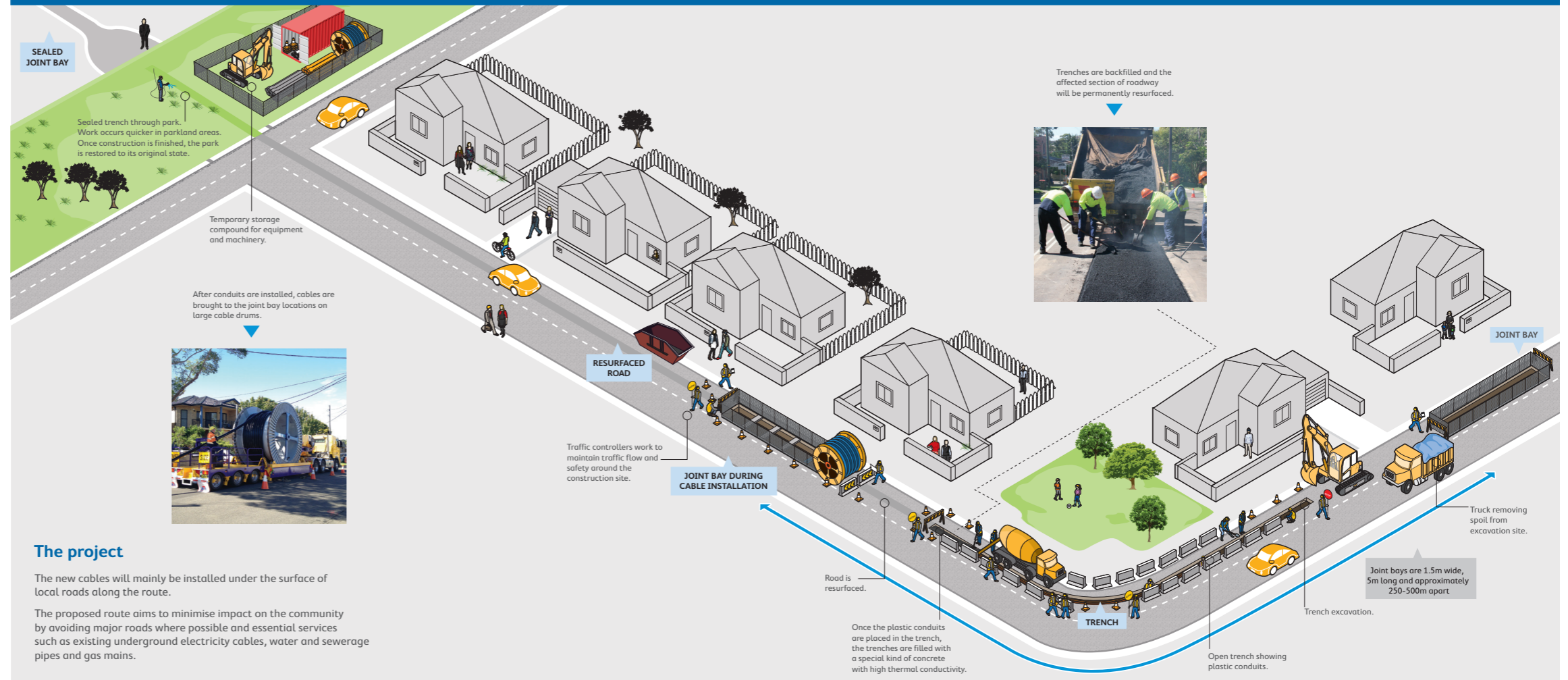
Crossing the Eastern Suburbs & Illawarra train line will involve boring under it using a horizontal directional drill. The crossing will run from the corner of Somerville and Gore Streets in Arncliffe to Hattersley Street, near the Princes Highway intersection.

This is likely to happen in 2019 towards the end of the project. This is because of the timeframe required for the approvals needed to cross the rail line.

### Retiring Arncliffe substation

Work to retire the Arncliffe substation will begin once the new cables are installed and connected to the Rockdale substation and the electricity load has been transferred.

## Underground 11,000 Volt cable installation



### The project

The new cables will mainly be installed under the surface of local roads along the route.

The proposed route aims to minimise impact on the community by avoiding major roads where possible and essential services such as existing underground electricity cables, water and sewerage pipes and gas mains.

### Construction stages

#### Underground joint bays

- Underground joint bays will be constructed approximately every 250–500m along the route.
- The joint bays are used to connect the cable sections.
- Between construction of the joint bay and connection of the cables, joint bays are either backfilled temporarily, barricaded or covered with concrete lids. Once cables are connected, the section of road is resurfaced.



#### 3–5 weeks

Time it takes to work at each joint bay location.

#### Trenching and conduit installation

- Trenching can occur on more than one site on a project simultaneously.
- Plastic conduits (pipes) will then be placed in the trenches and then the area is backfilled with a special kind of concrete.
- Then the section of road is either permanently reinstated immediately or at the end of the project, depending on contractual agreements.



#### 1–3 days

Time it takes to complete work outside most properties.

#### Cable installation

- At a later date, cable drums will be set up at joint bay locations.
- The 11,000 volt cables are pulled through the pipes and connected at the joint bays.



#### 1 week

Time it takes to complete work outside most properties.

## Restoring roads and impacted areas

Typically, restoration is done in two stages:

- Excavated sections of road are filled and resurfaced straight away to allow normal use by traffic
- Permanent resurfacing of the affected areas is done later once all cables are installed and tested.

We allow a period of time between work finishing and permanent restoration to allow the road to settle and prevent cracks on the final surface.

### Work hours

Work will be done between 7 am and 6 pm Mondays to Fridays, and 8 am and 1 pm on Saturdays. Work on Forest Road and the Princes Highway will be done at night to avoid major traffic disruptions during the day. We will notify nearby properties before this work happens.

### Rockdale Women's Sports Fields

A section of cable will be installed in the Rockdale Women's Sports Fields, along the northern edge between West Botany Street and the back of our Rockdale Substation.

This work will involve removing two or three trees near the entrance to the park on West Botany Street, but we will replace these once work is finished. The work area will be fenced during construction to ensure the safety of park users.

## Managing impacts

As with any construction work, there will be some temporary impacts for residents and businesses on or near the cable route. This may include noise, traffic and parking disruptions. We will make every effort to keep these impacts to a minimum.

Our contractor will use traffic management crews to guide drivers, pedestrians and cyclists safely around the work areas. Sections of the parking lane will need to be closed in streets where the crews are working, but these will be opened up again as they move along the street.

Access to properties, including driveways will generally be maintained, unless we make alternative arrangements with you in advance.

## Your power supply

Ausgrid does not plan to interrupt your power supply to complete the construction work. We will let you know in advance if this changes.

## Project approval process

Ausgrid is the approving authority for the work under the NSW Environmental Planning & Assessment Act.

We have conducted an environmental assessment for the project to investigate the potential environmental impacts associated with the construction, operation and maintenance of the new cables.

Mitigation measures have been identified to address and minimise impacts where feasible.

## Working with you

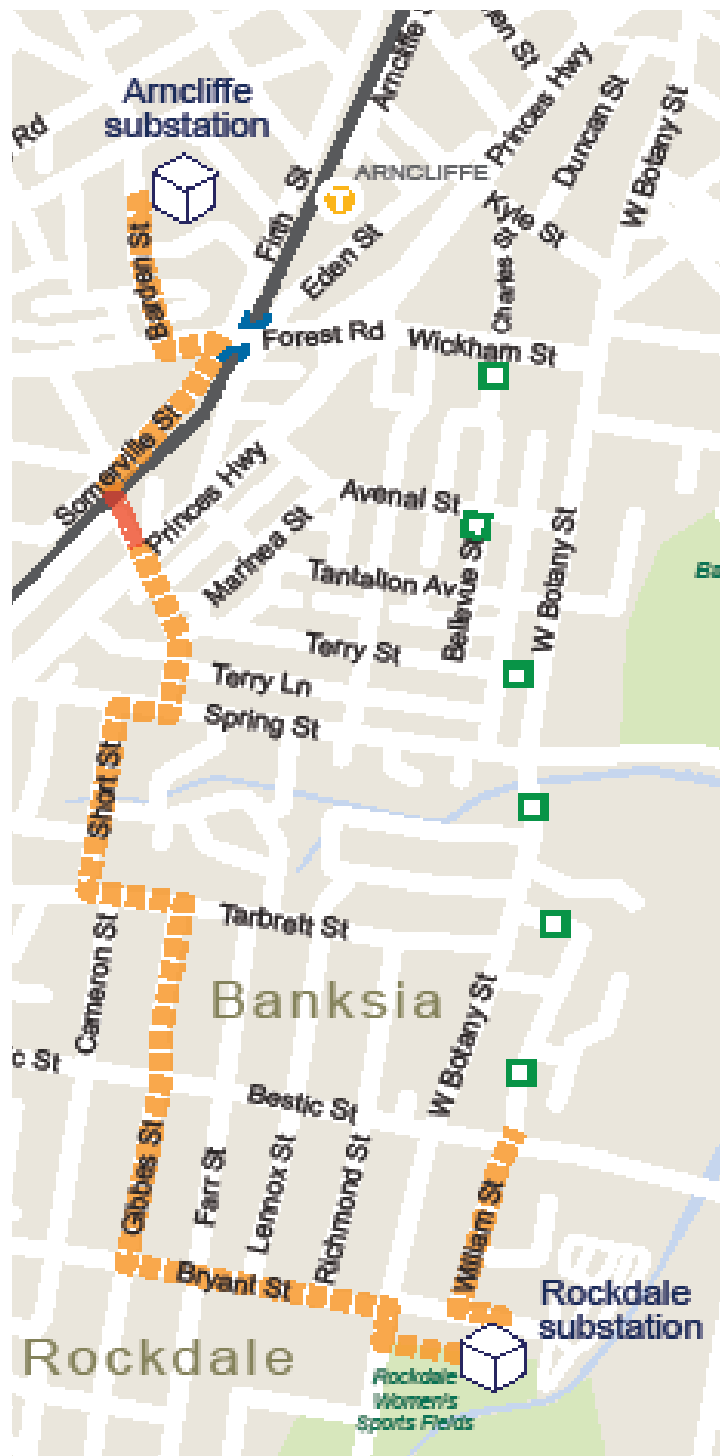
We are committed to working closely with the community to minimise disruption as much as possible.

Your questions and comments about the project are welcome at any time to help us and our contractor manage the construction work effectively.





Work will be done progressively along the route, which means it may be some time before we begin in your area. You will receive a letter approximately one week before work begins near you, including information about how you might be impacted.

We apologise in advance for any inconvenience caused by this project and we thank you for your understanding and patience.

## Arncliffe to Rockdale cable route



### Legend

-  Substation
-  Route for new 11kV cables
-  Underbore
-  Pits to install new cables into existing conduits

## Contacting us

You are welcome to contact us with any enquiries:

**Telephone** 1800 604 765 (free call from fixed phones)

**Email** [majorprojects@ausgrid.com.au](mailto:majorprojects@ausgrid.com.au)

**Web** [www.ausgrid.com.au/arnclifferockdale](http://www.ausgrid.com.au/arnclifferockdale)



Interpreter service 131 450

