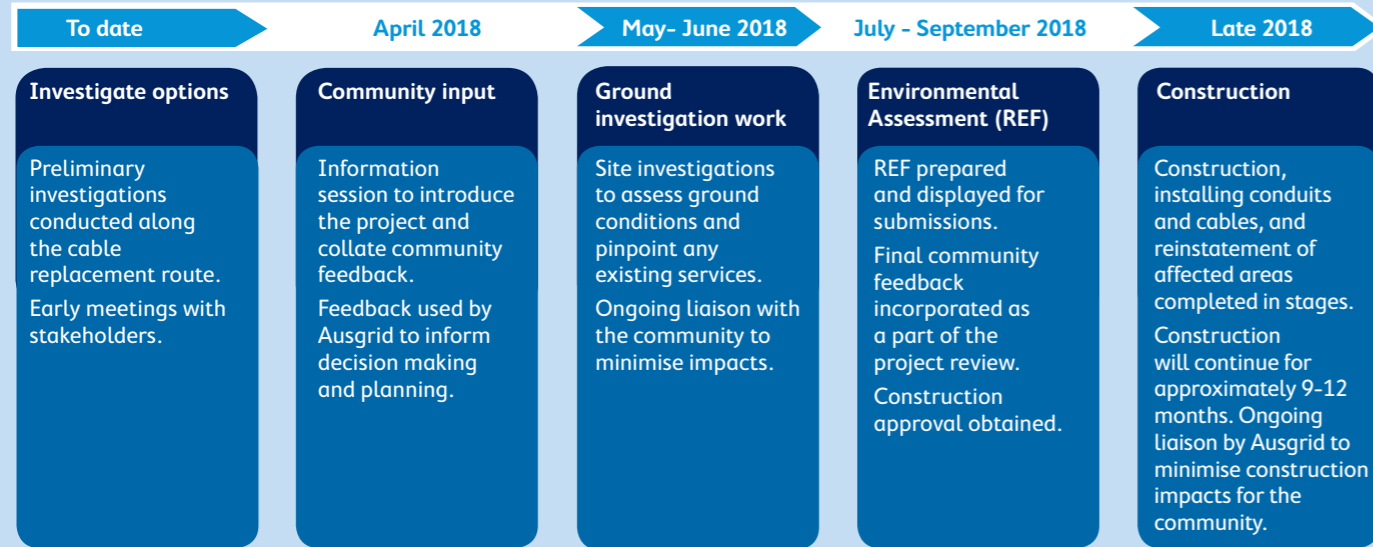


Key dates



Investigate options

Preliminary investigations conducted along the cable replacement route. Early meetings with stakeholders.

Community input

Information session to introduce the project and collate community feedback. Feedback used by Ausgrid to inform decision making and planning.

Ground investigation work

Site investigations to assess ground conditions and pinpoint any existing services. Ongoing liaison with the community to minimise impacts.

Environmental Assessment (REF)

REF prepared and displayed for submissions. Final community feedback incorporated as a part of the project review. Construction approval obtained.

Construction

Construction, installing conduits and cables, and reinstatement of affected areas completed in stages. Construction will continue for approximately 9-12 months. Ongoing liaison by Ausgrid to minimise construction impacts for the community.

Project assessment and approval

Under the NSW Environmental Planning and Assessment Act 1979, Ausgrid is the determining authority for this project. As part of this process, an environmental assessment (REF) has been prepared.

The REF investigates the potential environmental impacts associated with the construction, operation and maintenance of the proposed cable route.

View the Environmental Assessment

The REF is on exhibition until Friday 28 September 2018. Ausgrid encourages further community comments at this stage. Community feedback on the REF will be considered as part of this process and prior to the project being assessed for construction approval.

You can submit your feedback via the form on our project webpage. Alternatively, you can contact us and we can send you a form.

There are a number of ways you can read the REF:

In person

Printed copies of the REF are available at:

Panania Library and Knowledge Centre:

Cnr Tower Street & Anderson Avenue, Panania

Ausgrid: 570 George Street – available at reception in Bathurst Street

Web: www.ausgrid.com.au/picnicpointrevesby

Next steps

Following the REF exhibition period, Ausgrid will review and consider all submissions and prepare a report. The project will then be determined for approval based on the information in the REF.

Subject to finalisation of the REF and planning approval, construction would start in late 2018 and be completed by late 2019. You will receive an update after the environmental assessment is complete and a summary of the submissions has been prepared. This will be available on the project web page.

Ausgrid encourages your comments and enquiries at any time via the contact details below.

Keeping you informed

Pending approval, properties along the cable route will receive further updates as the project progresses, including details on what to expect during construction. The latest project information will also be available on the project web page (see contact details below).

If you would like to receive project updates electronically, please email us with your details.

Contacting us

You are welcome to contact us with any enquiries:
Call 1800 604 765 (free call from fixed phones)
Email majorprojects@ausgrid.com.au
Visit www.ausgrid.com.au/picnicpointrevesby



Interpreter service 131 450



Community Newsletter 2 – September 2018 Picnic Point to Revesby cable project



A similar cable project in progress

Project Update

Ausgrid is planning to replace the existing underground electricity cables that run between our Revesby zone substation at Tarro Avenue, Revesby and Transgrid's Sydney South substation located in George's River National Park at Picnic Point. These cables are more than 55 years old and must be replaced to maintain a safe and reliable power supply to customers.

The proposal involves replacing the 132,000 volt cables along the existing cable route on Tarro Avenue, Eastern Avenue and Kennedy Street, crossing Weston Street, Tower Street and Burns Bay Road. The southernmost section would access an existing easement through the George's River National Park.

An environmental assessment (known as a Review of Environmental Factors or REF) has been prepared for the preferred cable route and is now on display.

This newsletter provides an update on the project and information on how you can view and make a submission on the REF.

You have received this newsletter because you live or work near the replacement cable route shown on the map over the page.

Community involvement

Since our last newsletter, we have been liaising with the community and key stakeholders about the project. This process involved seeking community feedback on the replacement cable route and construction process.

Thank you to everyone who has provided feedback to date. The most commonly asked questions and our answers are available on our project web page.

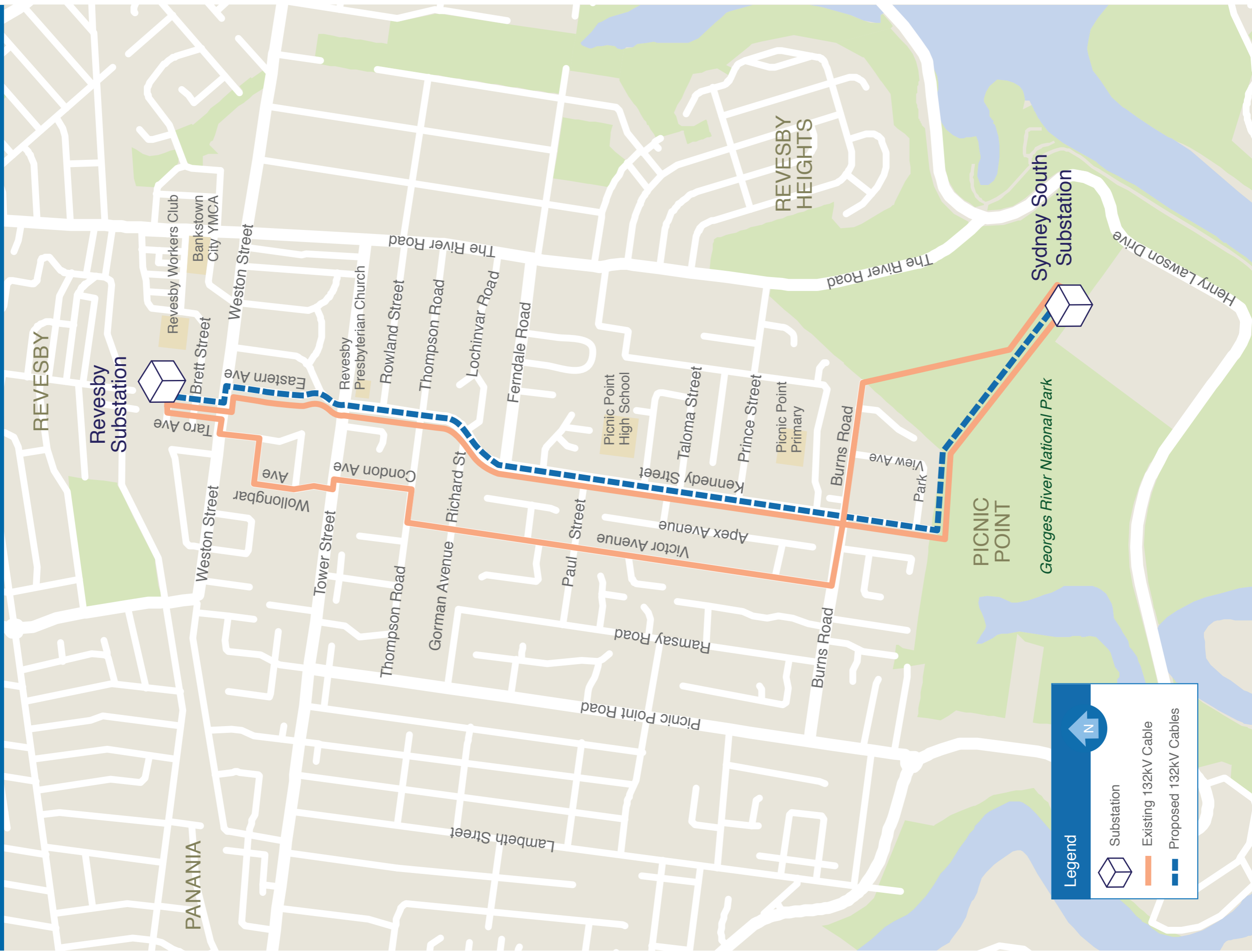
Have your say

Members of the project team will be available to discuss the REF at:

Date: Monday, 17 September, 2018
Location: Revesby Workers Club, Grevillea Room
Address: 2B Brett St, Revesby
Time: 5.00pm to 7.00pm

No appointment is necessary, just drop in. If you can't attend the information session and would like to meet the project team, please contact us and we can make alternative arrangements to discuss the project with you.

Picnic Point to Revesby cable project



Legend

- Substation
- Existing 132kV Cable
- Proposed 132kV Cables