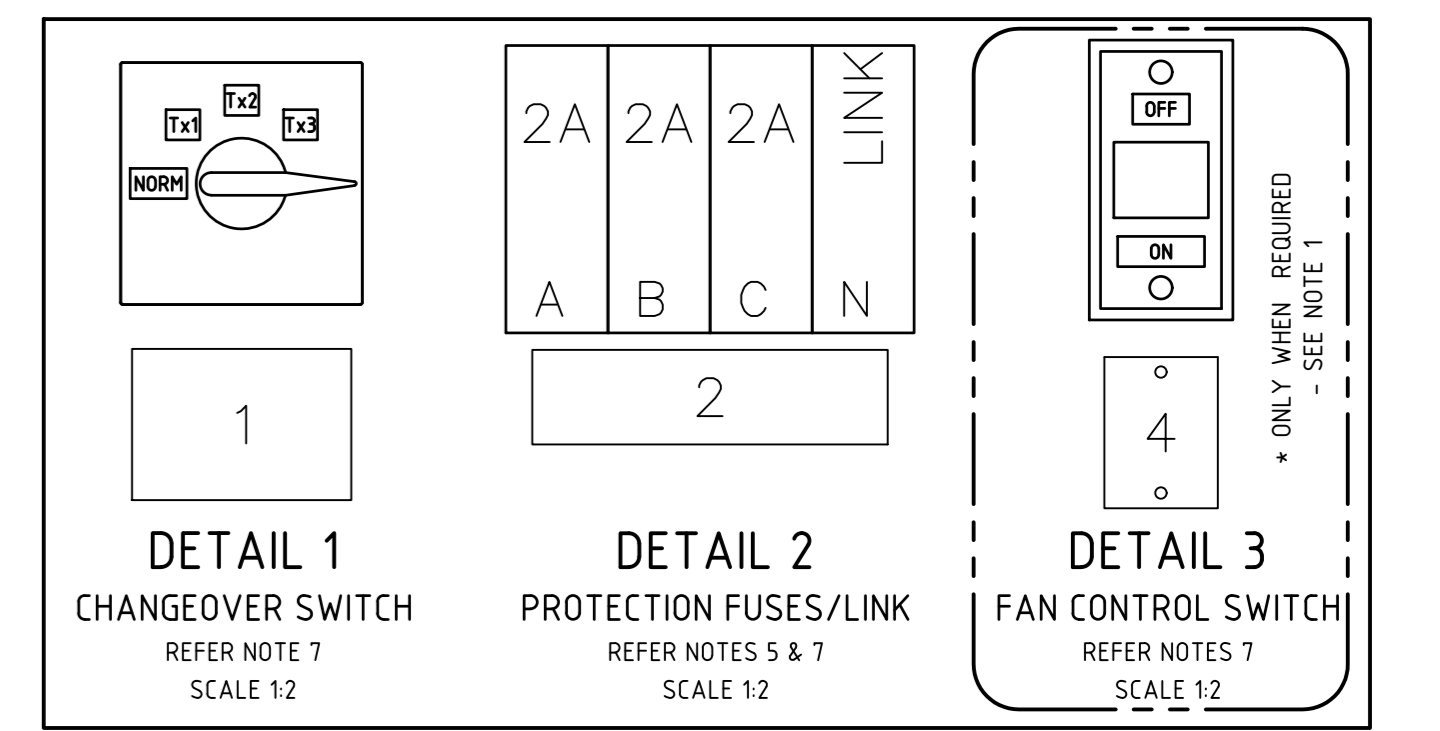
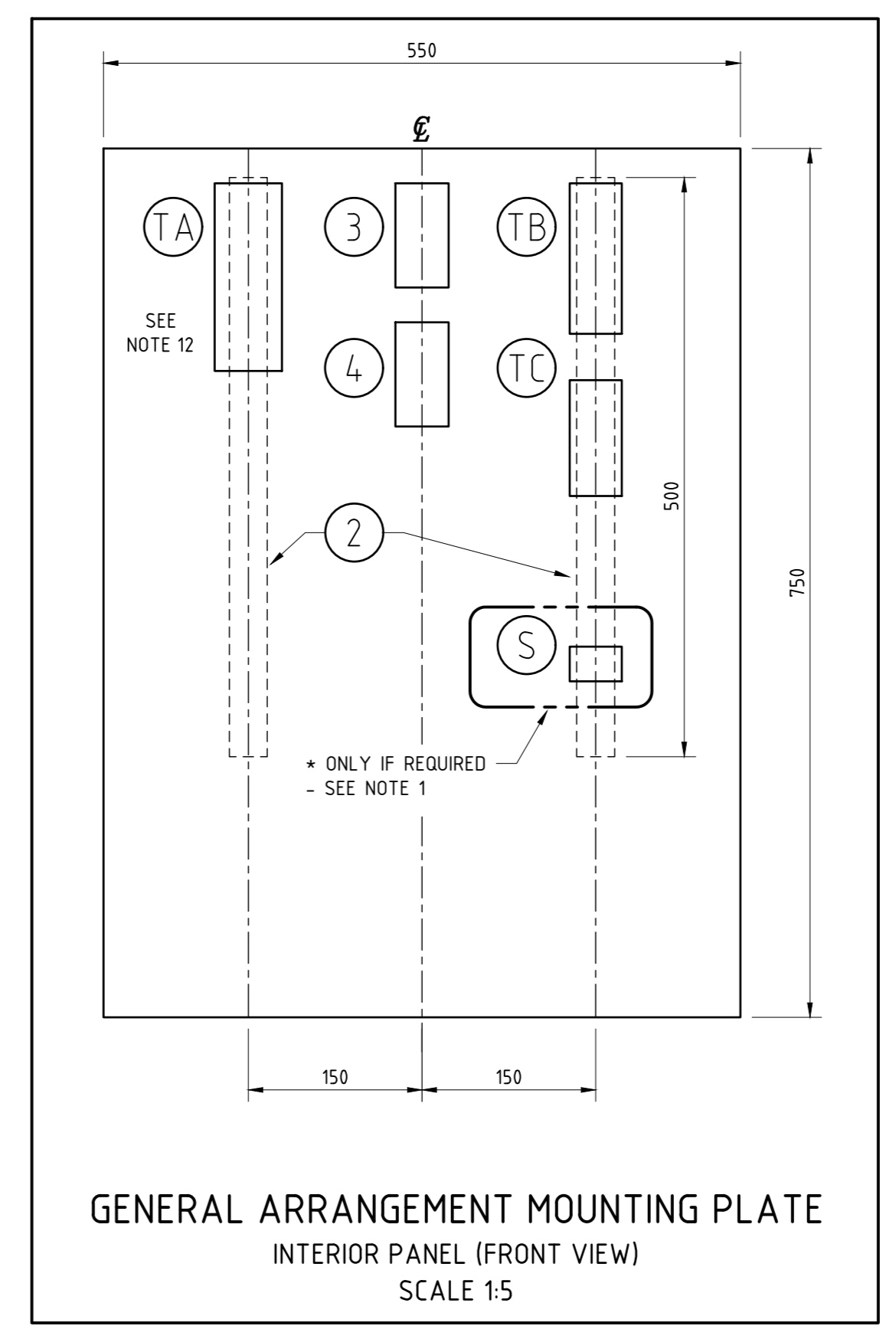
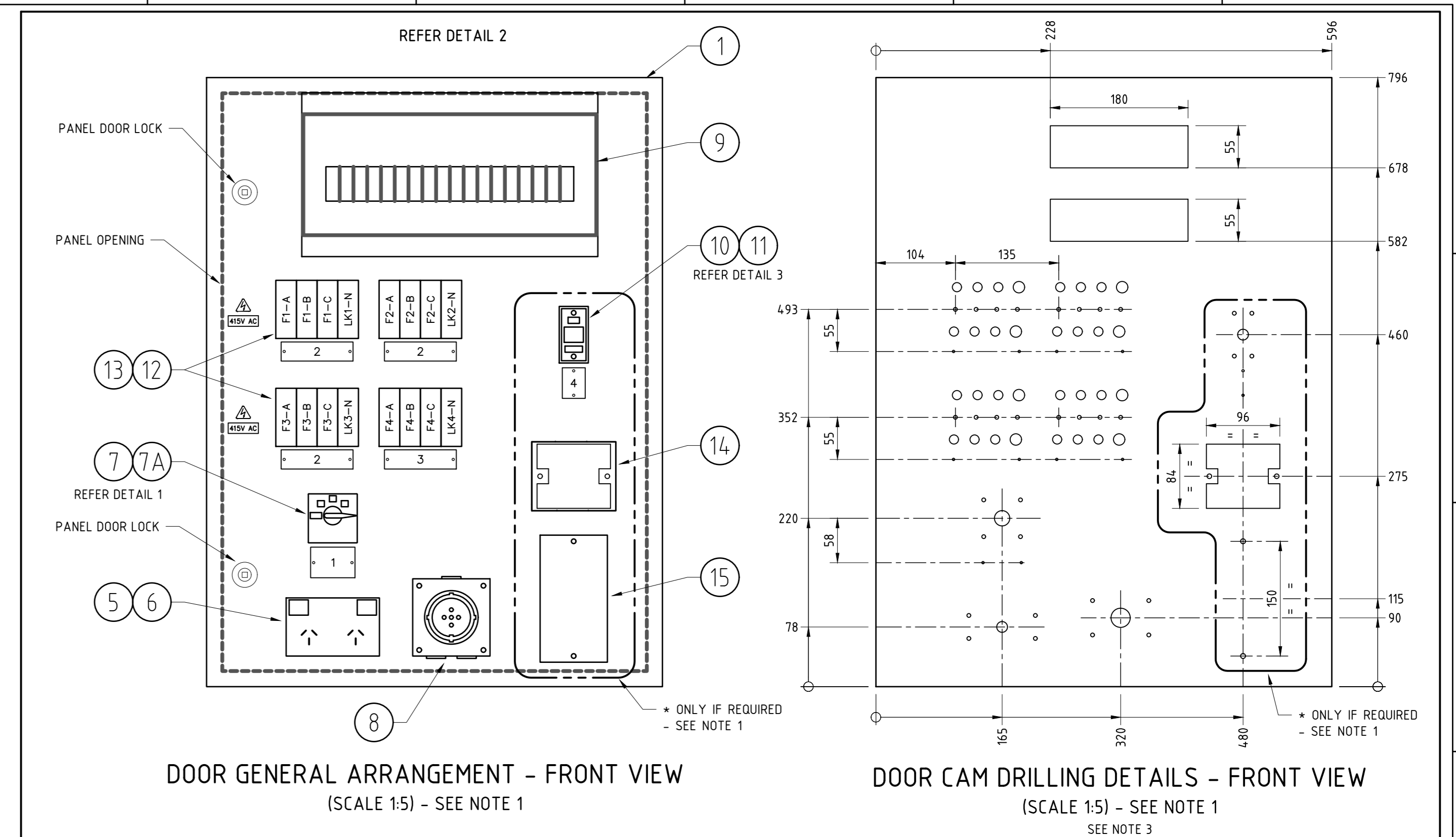


415V/240V AC CIRCUITS WIRING & CABLING DIAGRAM



LABEL DETAILS						
LABEL	LABEL SIZE	COLOUR	TEXT LINE	TEXT HEIGHT	ENGRAVING	QTY
1	C4	GRAVOPLY No.200 WHITE/BLACK	LINE 1 2.5 LINE 2 2.5 LINE 3 2.5	2.5	ESSENTIAL SERVICES STANDBY SUPPLY CHANGEOVER SWITCH	1
2	C23	GRAVOPLY No.259 PINE GREEN/WHITE	LINE 1 4.0 LINE 2 2.5 LINE 3 2.5	2.5	A B C N TRANSFORMER # 415V AC METERING SUPPLY	3
3	C23	GRAVOPLY No.259 PINE GREEN/WHITE	LINE 1 4.0 LINE 2 2.5 LINE 3 2.5	2.5	A B C N CUSTOMER OC No.1 & No.2 415V AC METERING SUPPLY	1
4	C3	GRAVOPLY No.200 WHITE/BLACK	LINE 1 2.5 LINE 2 2.5 LINE 3 2.5	2.5	FAN CONTROL SWITCH	1

LABEL CONSTRUCTION AND DRILLING DETAILS REFER DRAWINGS 50996 TYPICAL LABEL ENGRAVING DETAILS REFER DRAWING 64825 SEE NOTE 5

MATERIAL LIST				
ITEM No.	DESCRIPTION	REMARKS		No. OFF
1	WALL MOUNTED ENCLOSURE	B&R N08063		1
2	TERMINAL MOUNTING RAIL	UTILUX H2233A - 1 METRE MOUNTING RAIL		1
3	NEUTRAL LINK	CLIPCAL TYPE L18		1
4	EARTH LINK	CLIPCAL TYPE L18		1
5	10A DOUBLE GPO	HPM TYPE 777		1
6	MOUNTING BLOCK	HPM TYPE 110		1
7	4 STEP CHANGEOVER SWITCH	KRAUS & NAMER TYPE C42 A231 603 E		1
7A	TERMINAL COVERS	KRAUS & NAMER TYPE S1 M166/B03		2
8	50A 3 PHASE, 5 PIN SOCKET	CLIPCAL CAT No. 5650550		1
9	18 MODULE SURFACE MOUNT SWITCHBOARD	HPM HE185		1
10	10A SINGLE POLE SWITCH	HPM TYPE A770/1		1
11	MOUNTING BLOCK	HPM TYPE 141		1
12	LINK BACK CONNECTED 2 STUDS	SAFECLIP SC32PW (WHITE)		4
13	FUSE BACK CONNECTED	SAFECLIP SC32BW (BLACK)		12
14	FFS FAN FAILURE RELAY & TIMER	AUSGRID STOCK CODE 60962 - SEE 119090		1
15	5.5kW/7.5HP D.O.L. MOTOR STARTER	SCHNEIDER LE1-D123/LR2-D1316		1
7	FOR LABEL CONSTRUCTION, DRILLING AND ENGRAVING DETAILS REFER DRAWINGS 50996 & 64825.			
8	CABLE NAMES ARE SHOWN THUS [XX] REFER TO DWG 227386 SH1 & SH2.			
9	COMPRESSION TYPE CABLE LUGS ARE TO BE USED FOR TERMINATIONS ONTO ITEMS 12 & 14.			
10	WHERE SAK 16/EN IS NOT CONVENIENTLY AVAILABLE FOR WORKSHOP SAK 35/EN MAY BE USED.			
11	ALL PANEL WIRING TO BE CSA AS SHOWN. 0.6KV GRADE PVC INSULATED COLOURED BY PHASE. A _g TO BE RED, B _g TO BE WHITE, C _g TO BE BLUE AND NEUTRAL TO BE BLACK. ALL EARTH WIRING TO BE COLOURED GREEN/YELLOW.			
12	STANDARD WARNING LABEL TO HIGHLIGHT THE 415V AC HAZARD TO BE MOUNTED AS SHOWN. ANY EXPOSED TERMINALS ARE TO BE APPROPRIATELY COVERED AND THE HAZARD LABELLED.			
13	ALL SWITCHBOARD CIRCUIT BREAKERS TO BE CLEARLY AND APPROPRIATELY LABELLED.			

- NOTES:**
- THIS SERVICE BOARD IS DESIGNED FOR CITY DISTRIBUTION SUBSTATIONS WHERE OPTICAL ARC FLASH DETECTION AND CUSTOMER OC PROTECTION IS INSTALLED. THE VENTILATION FAN SYSTEM INVOLVING ITEMS 10, 11, 14, 16, & RELATED WIRING IS ONLY TO BE INSTALLED WHERE REQUIRED.
 - THIS DRAWING IS TO BE READ IN CONJUNCTION WITH RELEVANT NETWORK STANDARDS.
 - ALL DIMENSIONS ARE IN MILLIMETRES. DRILLING DETAILS FOR REFERENCE ONLY. CAM FILE TO BE PRODUCED FROM THIS DRAWING FOR MACHINE MANUFACTURE.
 - THE EARTH AND NEUTRAL LINK CONNECTIONS DESIGNATED BY (E) & (N) MUST BE INDIVIDUALLY CONNECTED AS SEPARATE CABLES TO THEIR RESPECTIVE LINK.
 - FOR LABELS WITH "H" SUBSTITUTE THE RELEVANT TRANSFORMER NUMBER.
 - CABLE TO BE OF ADEQUATE SIZE TO PREVENT VOLTAGE DROP, REFER TO AS 3000 FOR CABLE SIZE.
 - FOR LABEL CONSTRUCTION, DRILLING AND ENGRAVING DETAILS REFER TO DRAWINGS 50996 & 64825.
 - CABLE NAMES ARE SHOWN THUS [XX] REFER TO DWG 227386 SH1 & SH2.
 - COMPRESSION TYPE CABLE LUGS ARE TO BE USED FOR TERMINATIONS ONTO ITEMS 12 & 14.
 - WHERE SAK 16/EN IS NOT CONVENIENTLY AVAILABLE FOR WORKSHOP SAK 35/EN MAY BE USED.
 - ALL PANEL WIRING TO BE CSA AS SHOWN. 0.6KV GRADE PVC INSULATED COLOURED BY PHASE. A_g TO BE RED, B_g TO BE WHITE, C_g TO BE BLUE AND NEUTRAL TO BE BLACK. ALL EARTH WIRING TO BE COLOURED GREEN/YELLOW.
 - STANDARD WARNING LABEL TO HIGHLIGHT THE 415V AC HAZARD TO BE MOUNTED AS SHOWN. ANY EXPOSED TERMINALS ARE TO BE APPROPRIATELY COVERED AND THE HAZARD LABELLED.
 - ALL SWITCHBOARD CIRCUIT BREAKERS TO BE CLEARLY AND APPROPRIATELY LABELLED.

TITLE	DWG No.
CITY DISTRIBUTION SUBSTATIONS WITH E TYPE LV BOARD AND OPTICAL ARC FLASH DETECTION AC SCHEMATIC	227386 SH1
CITY DISTRIBUTION SUBSTATIONS WITH OPTICAL ARC FLASH DETECTION (E TYPE LV) TRANSFORMERS AND CUSTOMER OVERCURRENT FREE STANDING PANELS LAYOUT DETAILS	227387 SH1
CITY DISTRIBUTION SUBSTATIONS WITH E TYPE LV BOARD, DRY TYPE TX, & OAFD, TRANSFORMER PROTECTION PANEL WIRING DIAGRAM	227383 SH1
CITY DISTRIBUTION SUBSTATIONS WITH E TYPE LV BOARD, OIL TYPE TX, & OAFD, TRANSFORMER PROTECTION PANEL WIRING DIAGRAM	227383 SH2
CITY DISTRIBUTION SUBSTATIONS WITH E TYPE LV BOARD, DRY TYPE TX, & OAFD, TRANSFORMER PROTECTION PANEL CABLE CONNECTION DIAGRAM	227384 SH1
CITY DISTRIBUTION SUBSTATIONS WITH E TYPE LV BOARD, OIL TYPE TX, & OAFD, TRANSFORMER PROTECTION PANEL CABLE CONNECTION DIAGRAM	227384 SH2
CITY DISTRIBUTION SUBSTATIONS WITH E TYPE LV BOARD AND OAFD 1500VA TX'S AND VENTILATION FAN AC SERVICE BOARD LAYOUT, WIRING, & CONNECTIONS	227387 SH1

REFERENCE DRAWINGS		SCALE		AS SHOWN	
DESIGNED	-	SCALE	-	AS SHOWN	-
DRAWN	L.MARTINUZZI / E.KAIROUZ	DRAWN	L.MARTINUZZI	CITY DISTRIBUTION SUBSTATIONS WITH E TYPE LV BOARD, OPTICAL ARC FLASH DETECTION, AND 1500KVA TRANSFORMERS SERVICE BOARD LAYOUT, WIRING AND CABLING	
CHECKED	-	CHECKED	-		
APPROVED	M.BENNETT	APPROVED	M.BENNETT		
DATE	24/06/2015	DATE	24/06/2015		
TRIM REF	-	TRIM REF	-		
ISSUED FOR	-	ISSUED FOR	-		
PROJECT NUMBER	OPEX-6923-1	PROJECT NUMBER	OPEX-6923-1	DRAWING No	227387
				SHEET	1
				AMD	1
				SIZE	A0

CAD DRAWING
DRAWN BY: M.M.
CHECKED BY: M.M.
APPROVED BY: M.BENNETT



Ausgrid
NETWORK STANDARD
570 George Street
SYDNEY NSW 2000
P: 9773 3805