

A

B

C

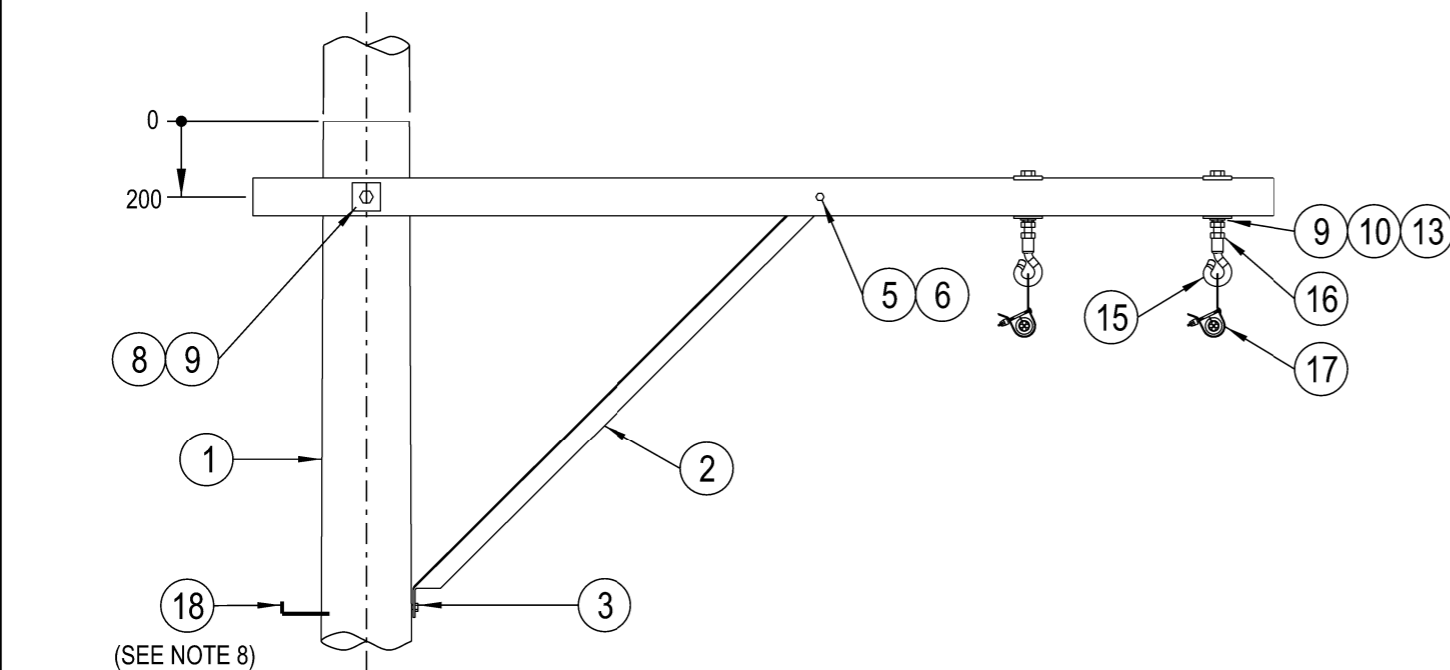
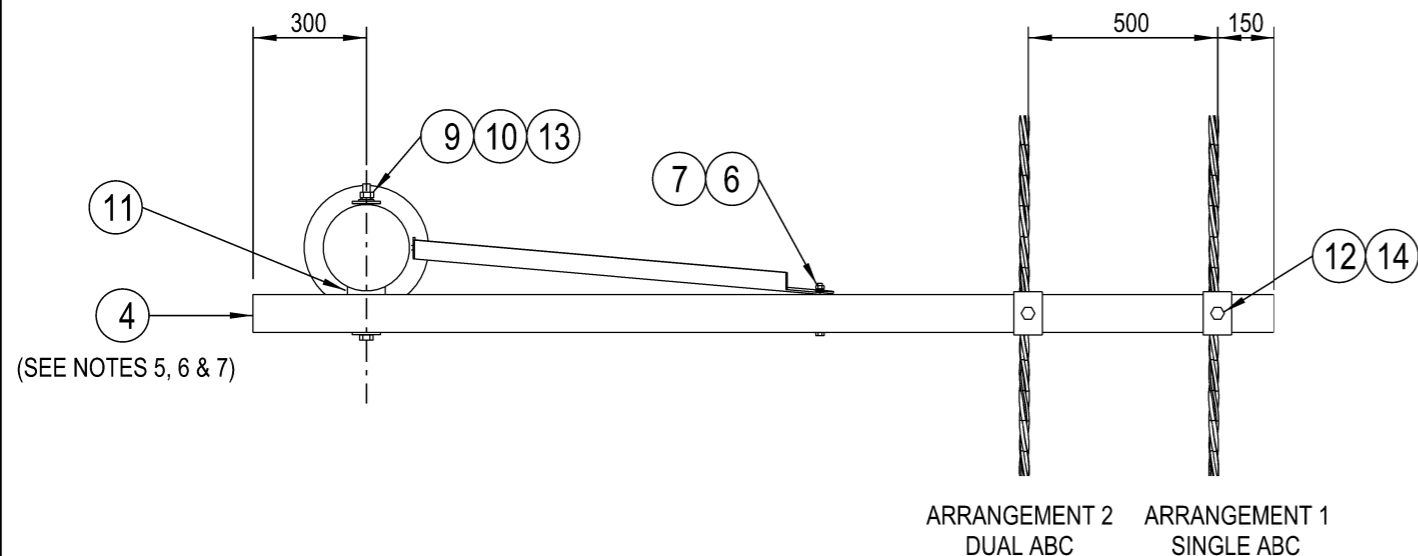
D

E

F

NOTES :

1. THE FOLLOWING INFORMATION IS OBTAINED FROM THE PROJECT DESIGN DRAWINGS:
 - a. POLE LENGTH AND STRENGTH.
 - b. SPECIAL FOUNDATION REQUIREMENTS.
 - c. POLE EMBEDMENT DEPTH.
 - d. CONDUCTOR SIZE.
 - e. CROSSARM SIZE.
 - f. STAY REQUIREMENTS.
 - g. DEVIATION ANGLE.
2. THE MAXIMUM LINE DEVIATION ANGLE TO BE CONSTRUCTED ON THIS ARRANGEMENT IS TO BE DETERMINED BY THE LINE DESIGNER.
3. ALL BOLTS PASSING THROUGH TIMBER ARE TO BE COATED WITH GRAPHITE GREASE.
4. POLES SHALL BE DRILLED, SCARFED AND DRESSED ON SITE. DRILLING AND SCARFING TO BE TREATED WITH APPROVED PRESERVATIVES.
5. A 2700mm CROSSARM IS TO BE USED AS THE DEFAULT CROSSARM. FOR SITUATIONS REQUIRING DIFFERENT CONDUCTOR CLEARANCES, ALTERNATE CROSSARMS MAY BE CONSIDERED TO OVERCOME DESIGN AND SITE CONSTRAINTS.
6. ONLY THE 2700mm CROSSARM OPTION IS SHOWN ON THIS CONSTRUCTION DRAWING. REFER TO DRGS: 514375 & 514376 FOR DRILLING PATTERN OF ALTERNATE CROSSARMS.
7. THE 3300x150x100mm CROSSARM IS TO BE MOUNTED WITH THE 150mm SIDE ORIENTED IN THE VERTICAL POSITION.
8. POLE STEPS ARE TO BE INSTALLED IN ACCORDANCE WITH THE REQUIREMENTS OF NS128.
9. REFER TO DESIGNER SAFETY REPORT D22/311716 FOR ATYPICAL HAZARDS ASSOCIATED WITH THIS STANDARD CONSTRUCTION.



ITEM	DESCRIPTION	DRG. No	STOCK CODE	ARR-1 QTY	ARR-2 QTY
18	STEP - POLE, SCREW-IN (SEE NOTE 8)	250144	185198	A/R	A/R
17	CLAMP - SUSPENSION (TO SUIT 2x25mm ² LV ABC)		H113480		
	CLAMP - SUSPENSION (TO SUIT 4x25mm ² LV ABC)		H113472		
	CLAMP - SUSPENSION (TO SUIT 2x95mm ² LV ABC)		H78238	1	2
	CLAMP - SUSPENSION (TO SUIT 4x95mm ² LV ABC)		63057		
	CLAMP - SUSPENSION (TO SUIT 4x150mm ² LV ABC)		148072		
16	NUT - M20, HEX., GALVANISED (LOCKNUT FOR NUT HOOK)	515466	39485	1	2
15	NUT - HOOK, M20, GALVANISED	515771	H19120	1	2
14	BOLT & NUT - M20x200mm, HEX., GALVANISED (USE WITH 3300mm CROSSARM)	515466	H38227	1	2
	BOLT & NUT - M20x150mm, HEX., GALVANISED (USE WITH 2400mm & 2700mm CROSSARMS)	515466	38340		
13	WASHER - FLAT, M20, GALVANISED	518081	177986	2	3
12	WASHER - LIP, M24, GALVANISED	518081	176912	1	2
11	BLOCK - GAIN, ALUMINIUM, 150mm (USE WITH 3300mm CROSSARM)		146290	1	1
	BLOCK - GAIN, ALUMINIUM, 100mm (USE WITH 2400mm & 2700mm CROSSARMS)		146274		
10	WASHER - CONICAL, M20, GALVANISED	518082	H39655	2	3
9	WASHER - SQUARE, 75x75x6mm, GALVANISED (Ø22mm HOLE)	518081	H39231	3	4
8	BOLT & NUT - M20, HEX., GALVANISED (LENGTH TO SUIT POLE)	515466		1	1
7	WASHER - CONICAL, M12, GALVANISED	518082	H39639	1	1
6	WASHER - FLAT, M12, GALVANISED	518081	177982	2	2
5	BOLT & NUT - M12x130mm, HEX., GALVANISED	515466	46805	1	1
4	CROSSARM - 3300x150x100mm, TYPE B, HARDWOOD (SEE NOTES 5, 6 & 7)	514376	H23020		
	CROSSARM - 2400x100x100mm, TYPE L, HARDWOOD (SEE NOTES 5 & 6)	514375	71589	1	1
	CROSSARM - 2700x100x100mm, TYPE K, HARDWOOD (SEE NOTES 5 & 6)	514375	H23656		
3	SCREW - COACH, M12 x 100mm, GALVANISED		H40484	1	1
2	BRACE - CROSSARM, ANGLE, 1524x50x50x6mm, GALVANISED	514382	H17291	1	1
1	POLE - TIMBER (AS REQUIRED)	513988		1	1

ALL DIMENSIONS IN MILLIMETRES UNLESS NOTED OTHERWISE.

DO NOT SCALE.

CAD DRAWING DO NOT MANUALLY AMEND AMENDMENTS	DWN: P.R.
	CHKD: P.J.
	APP'D: G.F.
	DATE: 03/11/2022
BRACE STRAP POSITION CORRECTED. NOTES & MATERIAL LIST AMENDED.	
4	

NETWORK STANDARD

 145 NEWCASTLE RD WALLSEND,
 NSW 2287

SCALE	1:20
DESIGNED	GARRY CRAIG
DRAWN	PATRICIA RIOS
CHECKED	GRANT BAILEY
APPROVED	GLENN FORD
DATE	04/04/16
PROJECT NUMBER	STD
PROJTRAK NUMBER	-

STANDARD CONSTRUCTION LV ABC OFFSET ARM CONSTRUCTION FOR 0° TO 30° DEVIATION ANGLE 1-81			
SIZE	DRAWING No	SHEET	AMD
A3	232175	01	4