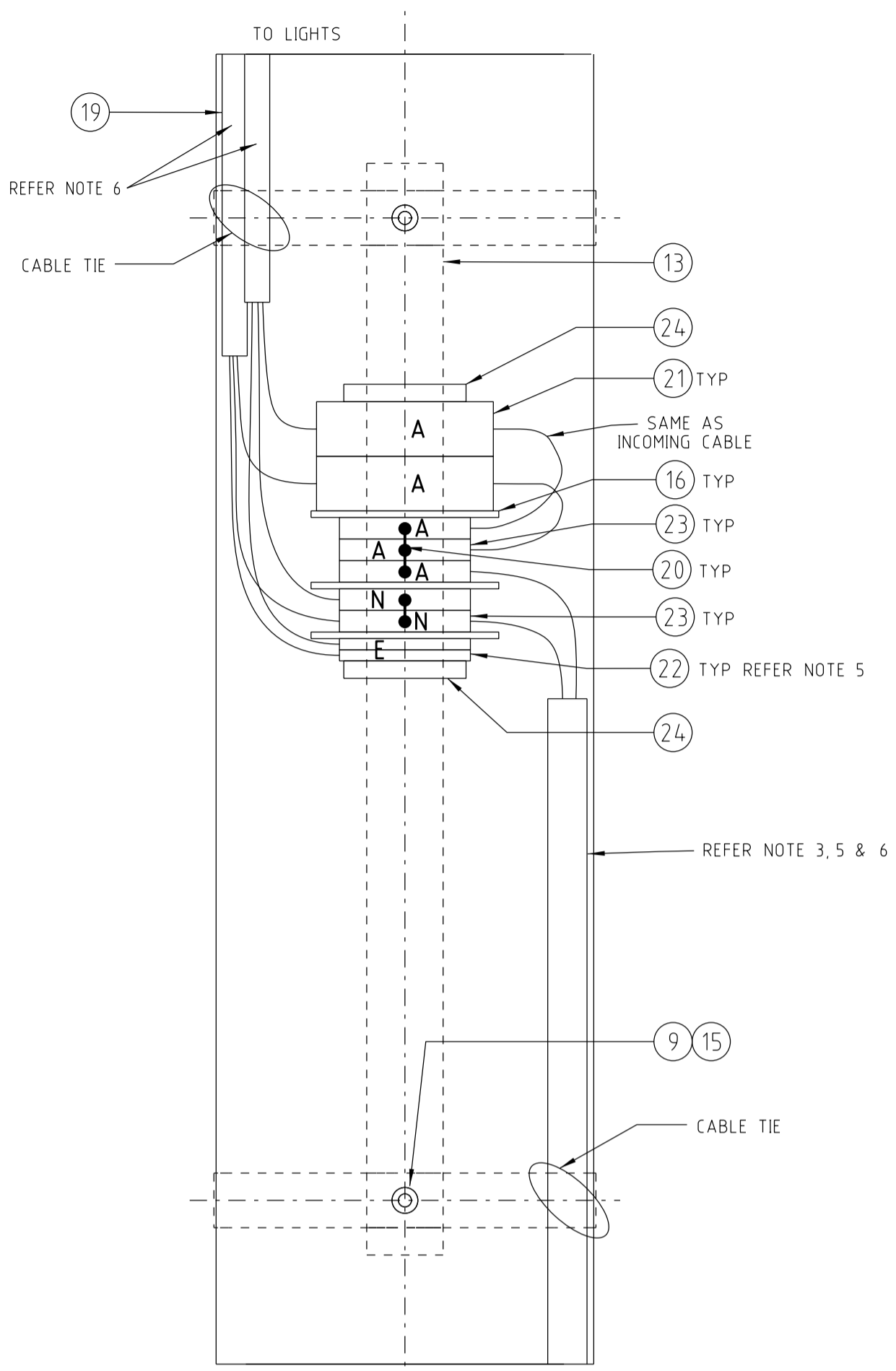
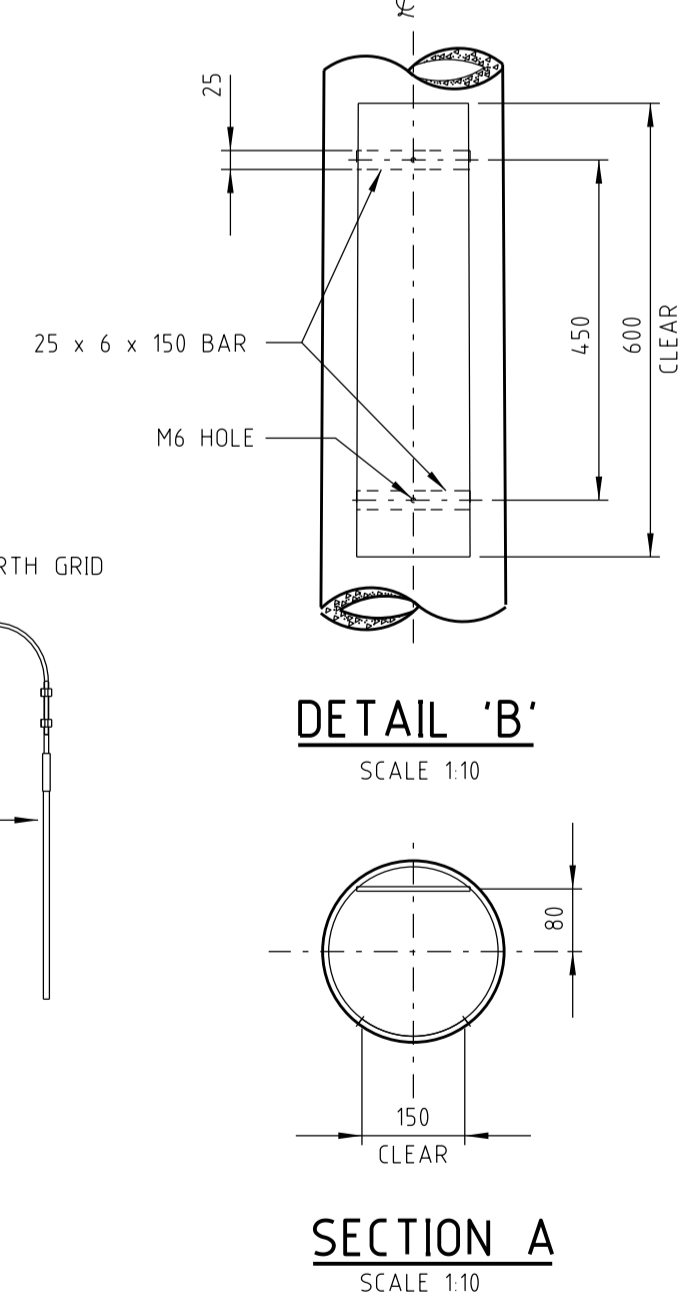


LIGHTNING / LIGHTING MAST ARRANGEMENT
SCALE 1:20

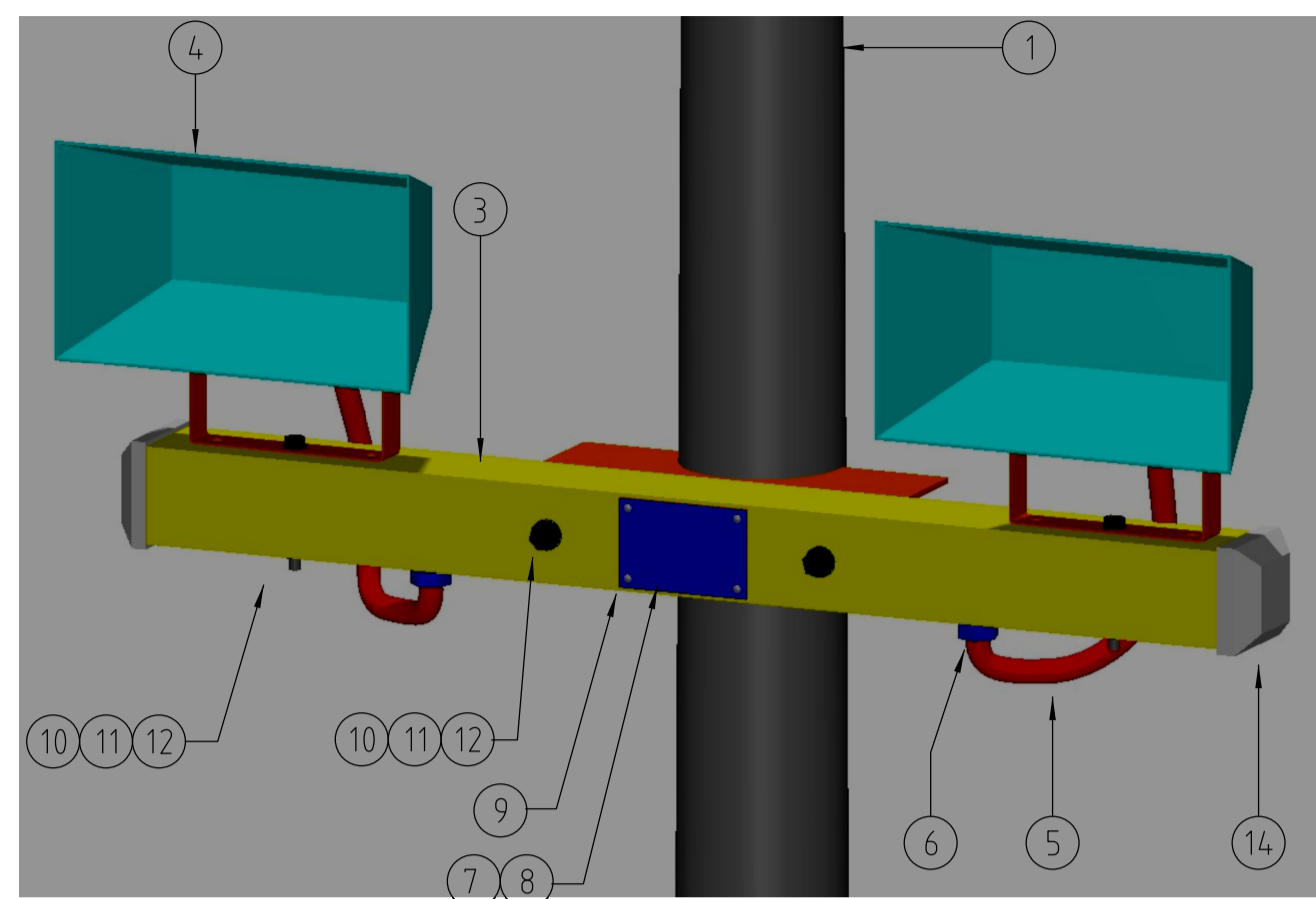


SUPPLY IN AND OUT
SCALE 1:2.5

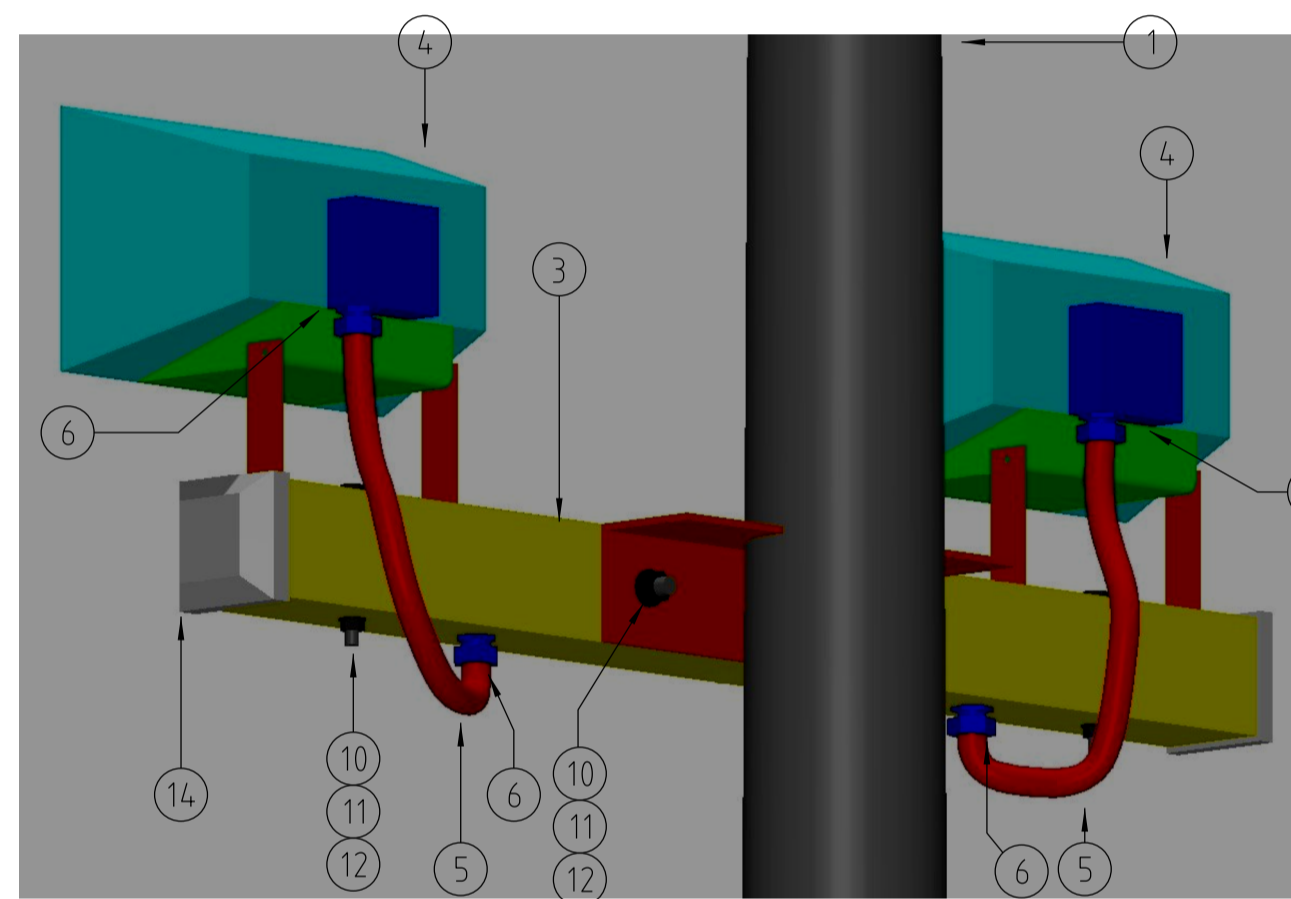


DETAIL 'B'
SCALE 1:10

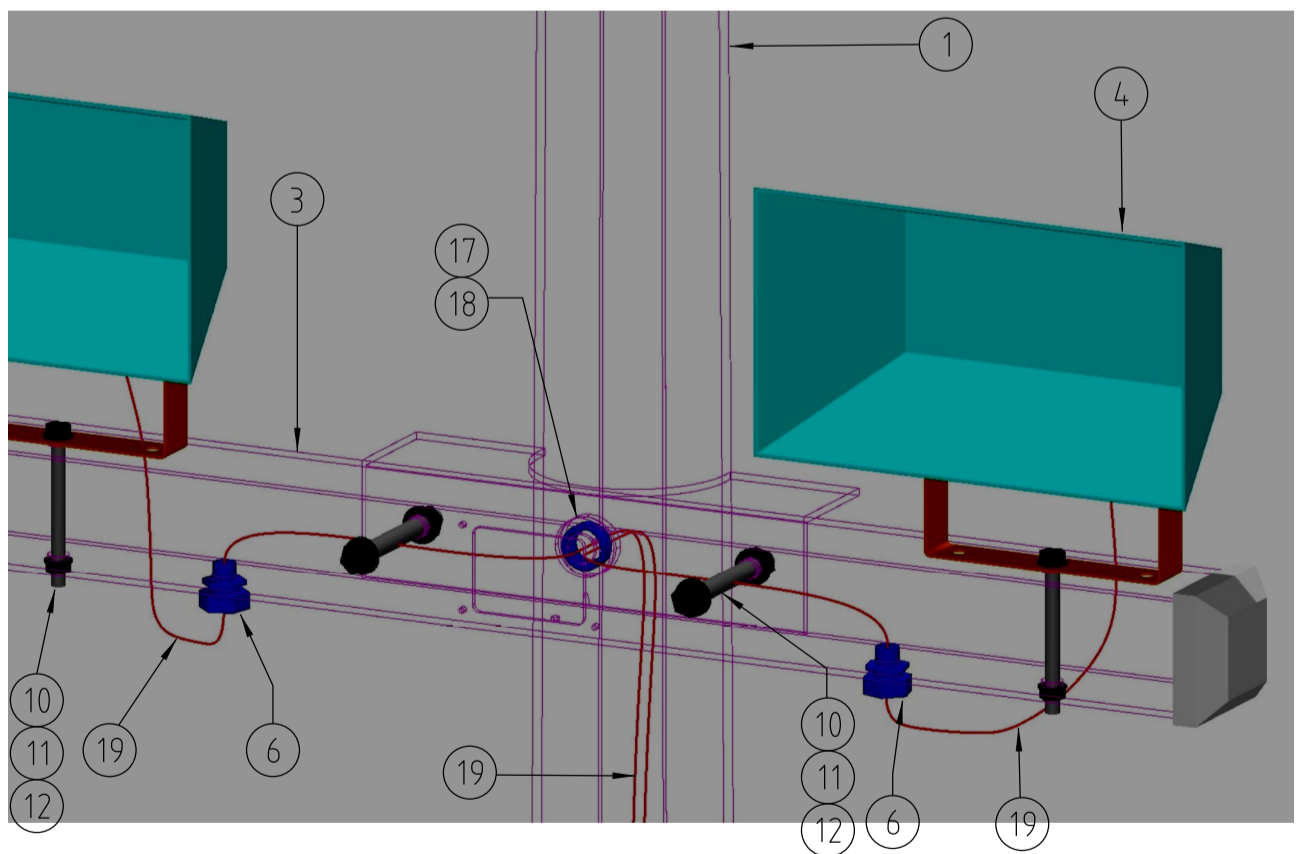
SECTION A
SCALE 1:10



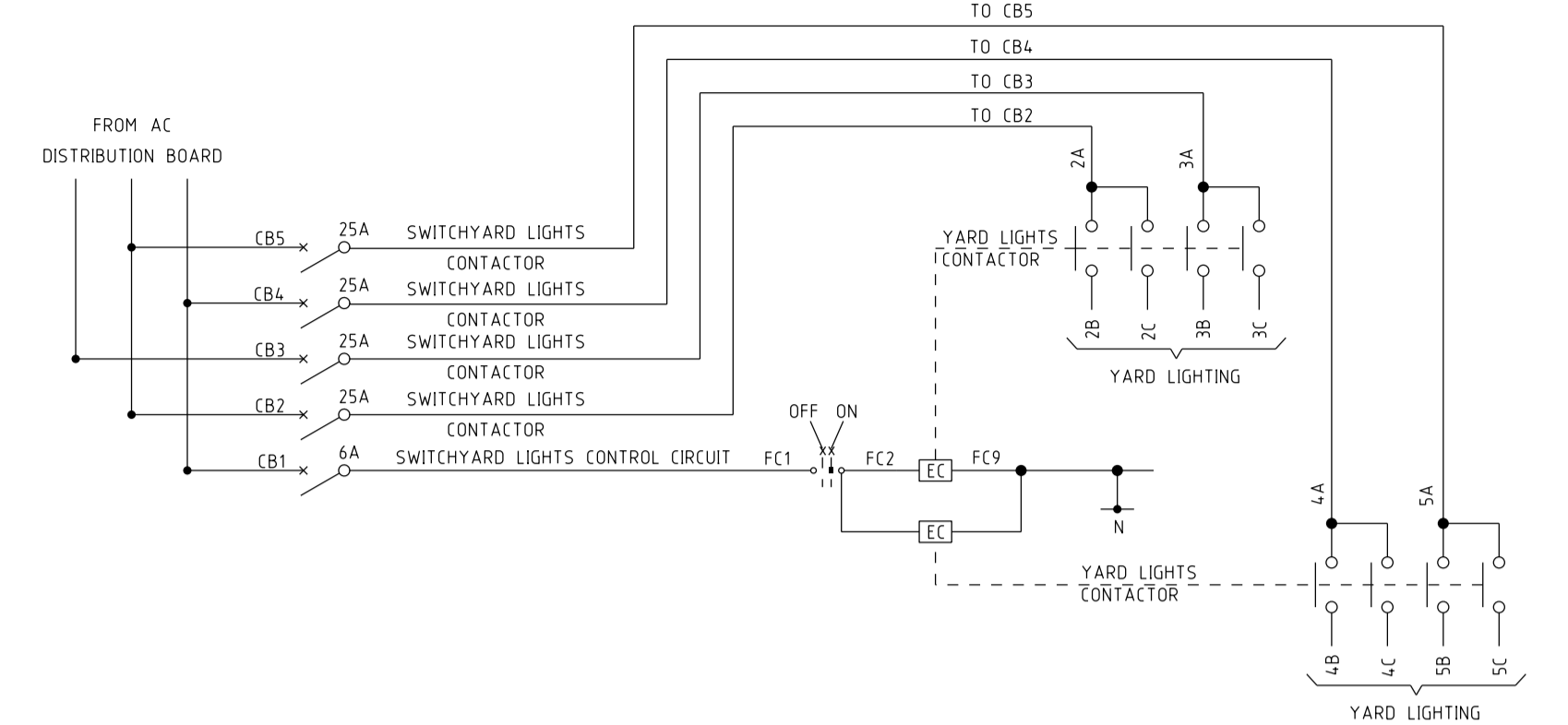
LIGHTING ASSEMBLY 'A'



LIGHTING ASSEMBLY 'B'



CABLING ASSEMBLY



TYPICAL LIGHTING SINGLE LINE DIAGRAM

NOTES:

- POLES AND CROSSARMS TO BE PURCHASED FROM INGAL EPS. POLES ARE TO BE DELIVERED IN SECTIONS (DEPENDING ON HEIGHT) AND ARE TO BE ASSEMBLED ON SITE.
- HEIGHT OF POLE INCLUDES POLE PLUS 1m LIGHTNING ROD, eg. 12M POLE + 1m ROD = 13m TOTAL.
- MAXIMUM OF 2 LIGHTS TO BE CONNECTED TO EACH INCOMING CIRCUIT PHASE.
- LIGHT FITTINGS MUST BE ALL METAL TO SHIELD ELECTRICAL CABLES.
- 2 CORE INCOMING CABLE SIZE TO SUIT SITE REQUIREMENTS. MAINTAIN NEUTRAL SEPARATION BETWEEN INCOMING CIRCUITS. THERE CAN BE NO EARTH CONNECTION FROM SUPPLY CABLES TO LIGHTS. DOING SO CAN RESULT IN DANGEROUS VOLTAGES AT THE AC DISTRIBUTION BOARD DURING LIGHTNING STORMS.
- MINIMISE STRIPBACK OF CABLE SHEATH & ENSURE THAT SINGLE INSULATED CORES ARE KEPT AT LEAST 25mm (AIRGAP) FROM SPIRE METALWORK.
- SPIRE DRAWING IS SUBJECT TO MANUFACTURER COPYRIGHT. REFER TO CATALOGUE NUMBER (STOCKCODE) FOR DETAILS. CONFIRM ITEM CORRESPONDS TO THE DRAWING AND REVISION DESCRIBED PRIOR TO ORDERING.

CONSTRUCTION ISSUE

ITEM	DESCRIPTION	DRAWING	STOCK CODE	QTY
24	END BRACKET - WEIDMULLER KLIPPON WEP 35/2			2
23	TERMINAL TS35 DIN RAIL MOUNTED WEIDMULLER KLIPPON WDU10			5
22	TS35 DIN RAIL EARTH TERMINAL - WEIDMULLER KLIPPON WPE 2.5			2
21	32A F/HOLDER, WHITE WITH LINK SAFECLIP SC32HWH			2
20	TERMINAL LINK WEIDMULLER KLIPPON WDV10			AS REQ.
19	2.5mm ² 2 CORE & E ORANGE CIRCULAR PVC/PVC 0.6/1kV (LENGTH TO SUIT)			AS REQ.
18	32mm THREADED BUSH GREY (FEMALE) - CLIPSAL 281F32			1
17	32mm CONDUIT BUSH GREY (MALE) - CLIPSAL 281/32			1
16	TERMINAL PARTITION - WEIDMULLER KLIPPON WTW EN			3
15	WASHER, FLAT M6 GALV			4
14	END CAP, TO SUIT 100mm ² SHS GAL. STEEL CROSSARM			2
13	TS35 X 7.5 DEEP SLOTTED STEEL DIN RAIL, 500mm LONG			1
12	WASHER, FLAT M16 GALV	518081	177984	4
11	NUT, M16 GALV	515466	9100	4
10	BOLT, M16 x 130 GALV	515466	46979	4
9	SET SCREW C/W NUT - M6 x 16mm GALV			2
8	COVER PLATE, STEEL 140 x 92 x 4mm	163028		1
7	GASKET, CORK 140 x 92	163028		1
6	GLAND, M20 S/S TO SUIT STEEL FLEXIBLE CONDUIT			4
5	CONDUIT, PVC SHEATHED STEEL FLEXIBLE Ø20 x 800mm LG TO AS2053.1 & AS2053.8			2
4	FLOODLIGHTS, WE-EF 1500W DI		140-9223	2
3	CROSSARM, 100 x 4 SHS x 1200mm LONG	163028		1
2	CONCRETE FOOTING DETAIL, 7m & 12m LIGHTNING MAST	162812		1
	CONCRETE FOOTING DETAIL, 15m, 18m & 20m LIGHTNING MAST	162293		1
	ALTERNATE PAD CONCRETE FOOTING, 7-20m LIGHTNING MAST (SUBS LIVE YARD)	215497		1
1	POLE, 20m STEEL FLANGE MOUNTED, TAPERED ROUND LIGHTNING MAST INGAL EPS DWG No GA7799 REV 0 REFER NOTE 7	232267	YEA20FCA12-86	1
	POLE, 18m STEEL FLANGE MOUNTED, TAPERED ROUND LIGHTNING MAST INGAL EPS DWG No GA2743 REV 0 REFER NOTE 7	232266	YEA18FCA12	1
	POLE, 15m STEEL FLANGE MOUNTED, TAPERED ROUND LIGHTNING MAST INGAL EPS DWG No GA6580 REV 0 REFER NOTE 7	232265	YEA15FCA12-GA6580-86	1
	POLE, 12m STEEL FLANGE MOUNTED, TAPERED ROUND LIGHTNING MAST INGAL EPS DWG No GA2746 REV 0 REFER NOTE 7	232263	YEA12FCA12	1
	POLE, 7m STEEL FLANGE MOUNTED, TAPERED ROUND LIGHT ONLY MAST INGAL EPS DWG No GA2747 REV 0 REFER NOTE 7	232262	YEA7FCA12	1

NO.	DESCRIPTION	DATE	BY	CHKD.
1	CAD DRAWING			
2	DATE: 26/02/2013			
3	DATE: 01/05/2014			
4	DATE: 09/09/2014			
5	DATE: 27/05/2015			
6	DATE: 19/12/2018			
7	DATE: 04/04/2019			
8	DATE: 01/04/2019			
9	DATE: 23/11/2017			
10	DATE: 19/12/2018			
11	DATE: 01/04/2019			

Ausgrid
145 NEWCASTLE RD WALLSEND, NSW 2287

AS SHOWN
DESIGNED: PETER STOREY
DRAWN: DAVID GOODWIN
CHECKED: PETER STOREY
APPROVED: R. HUGHES
DATE: 24/11/03
PROJECT NUMBER: STD

STANDARD CONSTRUCTION
LIGHTNING SPIRE AND FLOODLIGHTING
2 LIGHT ASSEMBLY
GENERAL ARRANGEMENT

SCALE: DRAWING No
PROJECT: A1
SHEET: 01
AMD: 11

162013