

# Proposed Change to Symbology for LV Cables in WebGIS

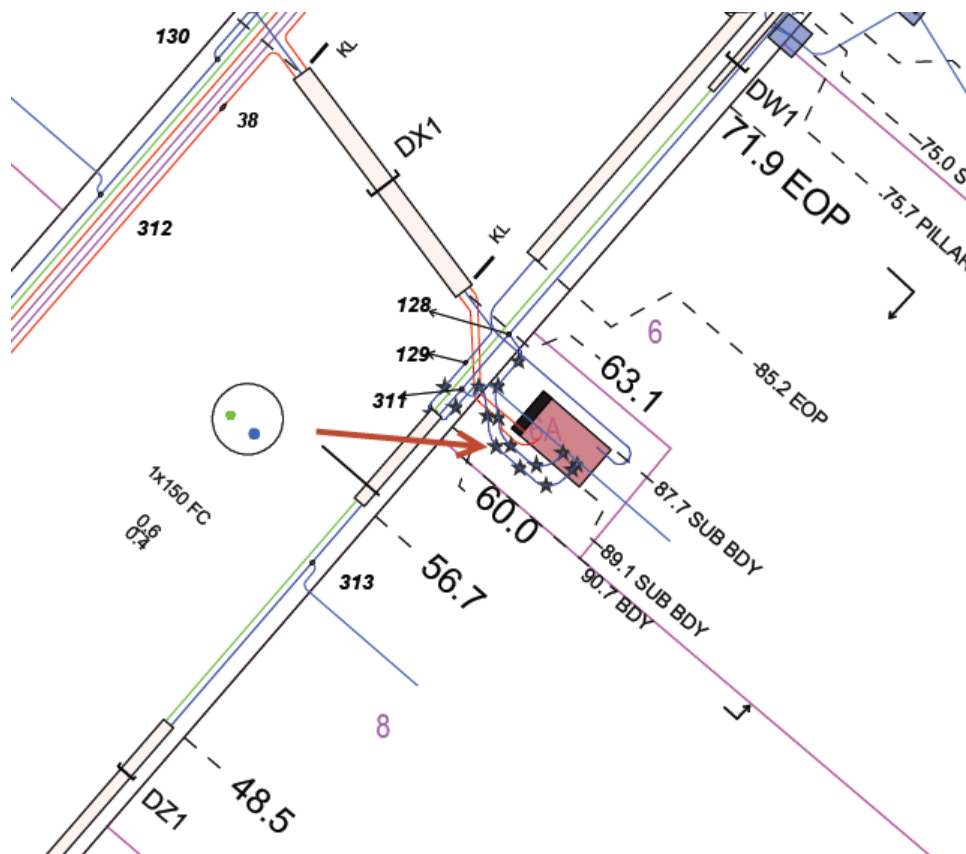


Dear ASP/3,

Ausgrid has identified that certain existing cables are susceptible to deterioration and may pose a risk of electric shock when working near them, particularly in damp ground. This applies to low voltage single core, stranded aluminium conductor (AL1), high density polyethylene insulated (XQ or Q), PVC sheathed cables (Z) that were installed prior to 1985.

Ausgrid's GIS team is currently working to make changes to the symbology of the suspect low voltage cables in the WebGIS viewer and AutoCAD extract in order to be able to identify the affected cables.

Until this work is completed, a Dial Before You Dig plan can be requested to identify the location of the affected cables which are illustrated by "stars" located over the location of these cables as shown in the example below.



Cable codes affected are:

2100  
2101  
2140  
2141  
2176  
5037  
5038  
5039  
5040  
5041  
5042  
5069  
5079  
5130  
5138  
5144  
5154  
5050

Further information on the specific hazard and work requirements are contained in NUS199 “*Safe Electrical Working on Low Voltage Assets*”, Section 8 “*Low Voltage Aluminium Single Core Cables*”.

We will provide a further update once the proposed changes to the symbology in WebGIS have been completed.

If you have any questions please contact us on [contestability@ausgrid.com.au](mailto:contestability@ausgrid.com.au), or phone 1800 051 017.

Regards

Matthew Hindson

Contestable Connections Manager - Ausgrid