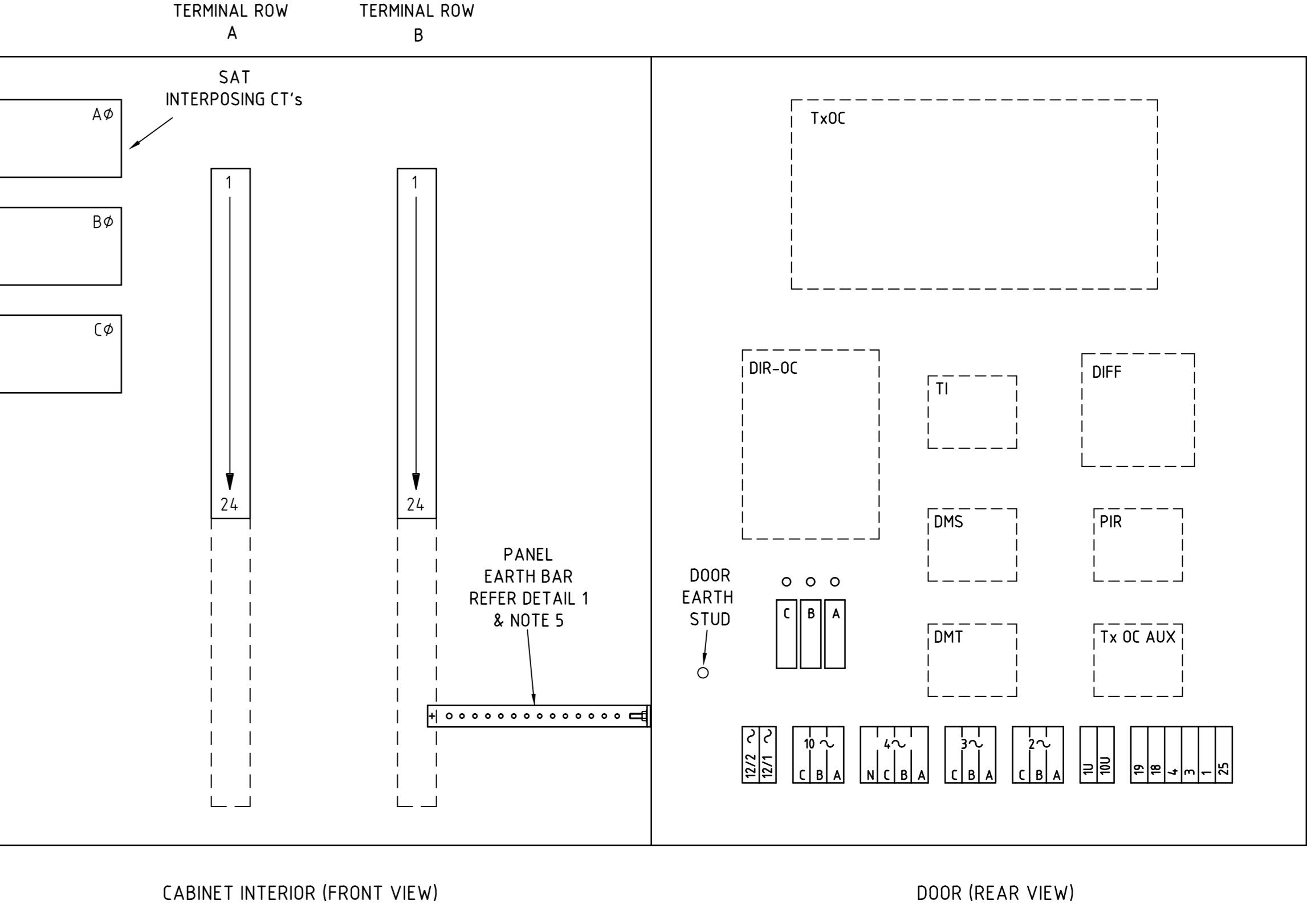
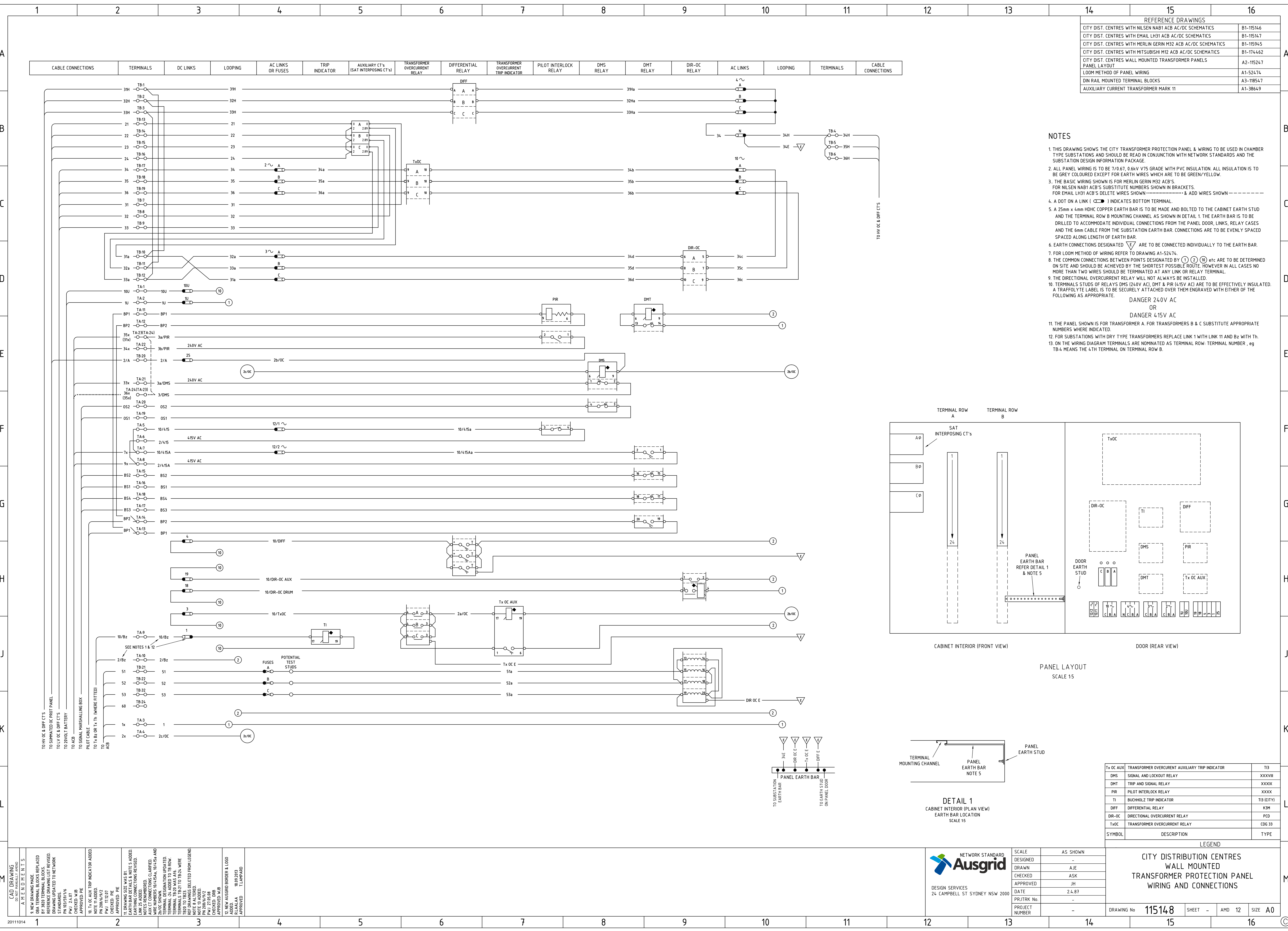
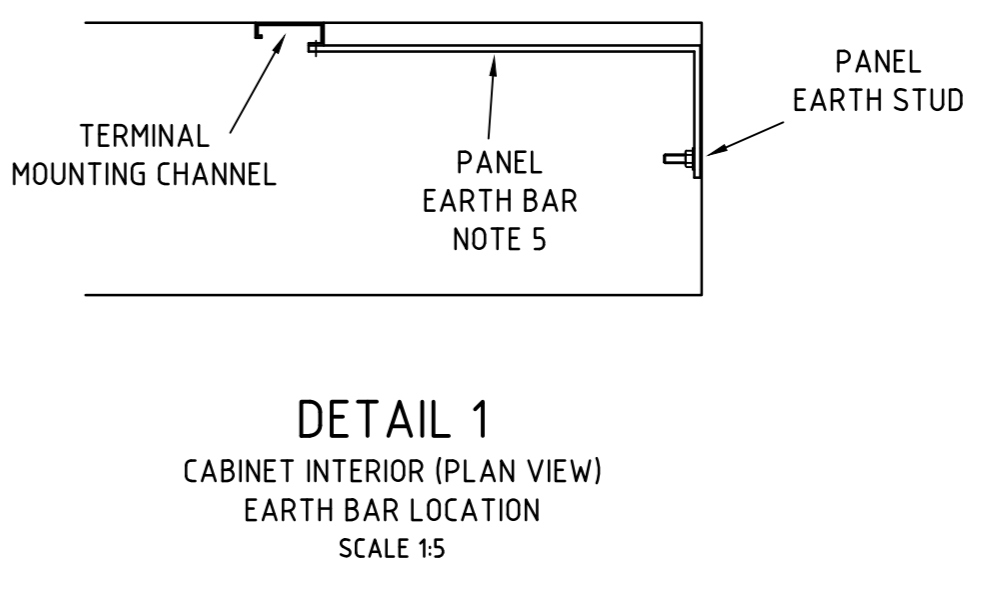


REFERENCE DRAWINGS	
CITY DIST. CENTRES WITH NILSEN NAB1 ACB AC/DC SCHEMATICS	B1-115146
CITY DIST. CENTRES WITH EMAIL LH31 ACB AC/DC SCHEMATICS	B1-115147
CITY DIST. CENTRES WITH MERLIN GERIN M32 ACB AC/DC SCHEMATICS	B1-115945
CITY DIST. CENTRES WITH MITSUBISHI M12 ACB AC/DC SCHEMATICS	B1-174462
CITY DIST. CENTRES WALL MOUNTED TRANSFORMER PANELS	A2-115247
PANEL LAYOUT	A1-52474
LOOM METHOD OF PANEL WIRING	A3-118547
DIN RAIL MOUNTED TERMINAL BLOCKS	A3-118547
AUXILIARY CURRENT TRANSFORMER MARK 11	A1-38649

- NOTES**
- THIS DRAWING SHOWS THE CITY TRANSFORMER PROTECTION PANEL & WIRING TO BE USED IN CHAMBER TYPE SUBSTATIONS AND SHOULD BE READ IN CONJUNCTION WITH NETWORK STANDARDS AND THE SUBSTATION DESIGN INFORMATION PACKAGE.
 - ALL PANEL WIRING IS TO BE 7/0.67, 0.6kV V75 GRADE WITH PVC INSULATION. ALL INSULATION IS TO BE GREY COLOURED EXCEPT FOR EARTH WIRES WHICH ARE TO BE GREEN/YELLOW.
 - THE BASIC WIRING SHOWN IS FOR MERLIN GERIN M32 ACB'S. FOR NILSEN NAB1 ACB'S SUBSTITUTE NUMBERS SHOWN IN BRACKETS. FOR EMAIL LH31 ACB'S DELETE WIRES SHOWN [---] & ADD WIRES SHOWN [---].
 - A DOT ON A LINK ([]) INDICATES BOTTOM TERMINAL.
 - A 25mm x 4mm HDHC COPPER EARTH BAR IS TO BE MADE AND BOLTED TO THE CABINET EARTH STUD AND THE TERMINAL ROW'S MOUNTING CHANNEL AS SHOWN IN DETAIL 1. THE EARTH BAR IS TO BE DRILLED TO ACCOMMODATE INDIVIDUAL CONNECTIONS FROM THE PANEL DOOR, LINKS, RELAY CASES AND THE 6mm CABLE FROM THE SUBSTATION EARTH BAR. CONNECTIONS ARE TO BE EVENLY SPACED ALONG LENGTH OF EARTH BAR.
 - EARTH CONNECTIONS DESIGNATED [] ARE TO BE CONNECTED INDIVIDUALLY TO THE EARTH BAR.
 - FOR LOOM METHOD OF WIRING REFER TO DRAWING A1-52474.
 - THE COMMON CONNECTIONS BETWEEN POINTS DESIGNATED BY [1] [2] [3] [4] ARE TO BE DETERMINED ON SITE AND SHOULD BE ACHIEVED BY THE SHORTEST POSSIBLE ROUTE, HOWEVER IN ALL CASES NO MORE THAN TWO WIRES SHOULD BE TERMINATED AT ANY LINK OR RELAY TERMINAL.
 - THE DIRECTIONAL OVERCURRENT RELAY WILL NOT ALWAYS BE INSTALLED.
 - TERMINALS STUDS OF RELAYS DMS (240V AC), DMT & PIR (415V AC) ARE TO BE EFFECTIVELY INSULATED. A TRAFFOLYTE LABEL IS TO BE SECURELY ATTACHED OVER THEM ENGRAVED WITH EITHER OF THE FOLLOWING AS APPROPRIATE:
DANGER 240V AC
OR
DANGER 415V AC
 - THE PANEL SHOWN IS FOR TRANSFORMER A. FOR TRANSFORMERS B & C SUBSTITUTE APPROPRIATE NUMBERS WHERE INDICATED.
 - FOR SUBSTATIONS WITH DRY TYPE TRANSFORMERS REPLACE LINK 1 WITH LINK 11 AND B2 WITH TH.
 - ON THE WIRING DIAGRAM TERMINALS ARE NOMINATED AS TERMINAL ROW, TERMINAL NUMBER, eg TB.4 MEANS THE 4TH TERMINAL ON TERMINAL ROW B.



PANEL LAYOUT SCALE 15



DETAIL 1 CABINET INTERIOR (PLAN VIEW) EARTH BAR LOCATION SCALE 15

SYMBOL	DESCRIPTION	TYPE
Tx OC AUX	TRANSFORMER OVERCURRENT AUXILIARY TRIP INDICATOR	T13
DMS	SIGNAL AND LOCKOUT RELAY	XXXVIII
DMT	TRIP AND SIGNAL RELAY	XXXXX
PIR	PILOT INTERLOCK RELAY	XXXXX
T1	BUCHHOLZ TRIP INDICATOR	T13 (GT1)
DIFF	DIFFERENTIAL RELAY	K3M
DIR-OC	DIRECTIONAL OVERCURRENT RELAY	PCD
TxOC	TRANSFORMER OVERCURRENT RELAY	CDG 33

LEGEND	
SCALE DESIGNED	AS SHOWN
DRAWN	AJE
CHECKED	ASK
APPROVED	JH
DATE	2.4.87
PRJ/TRK No.	
PROJECT NUMBER	



CITY DISTRIBUTION CENTRES WALL MOUNTED TRANSFORMER PROTECTION PANEL WIRING AND CONNECTIONS

- REVISIONS**
1. NEW DRAWING MADE BY AJE. 18/03/17
 2. NEW DRAWING MADE BY AJE. 18/03/17
 3. NEW DRAWING MADE BY AJE. 18/03/17
 4. NEW DRAWING MADE BY AJE. 18/03/17
 5. NEW DRAWING MADE BY AJE. 18/03/17
 6. NEW DRAWING MADE BY AJE. 18/03/17
 7. NEW DRAWING MADE BY AJE. 18/03/17
 8. NEW DRAWING MADE BY AJE. 18/03/17
 9. NEW DRAWING MADE BY AJE. 18/03/17
 10. NEW DRAWING MADE BY AJE. 18/03/17
 11. NEW DRAWING MADE BY AJE. 18/03/17
 12. NEW DRAWING MADE BY AJE. 18/03/17
 13. NEW DRAWING MADE BY AJE. 18/03/17
 14. NEW DRAWING MADE BY AJE. 18/03/17
 15. NEW DRAWING MADE BY AJE. 18/03/17
 16. NEW DRAWING MADE BY AJE. 18/03/17
- APPROVED:** [Signature]
- CHECKED:** [Signature]
- DRAWN:** [Signature]