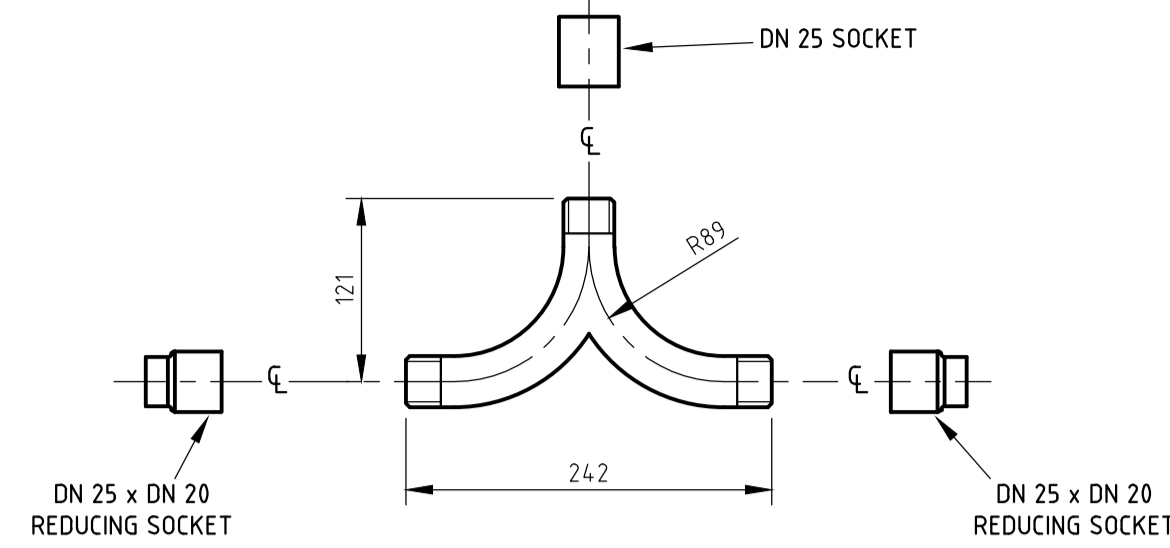


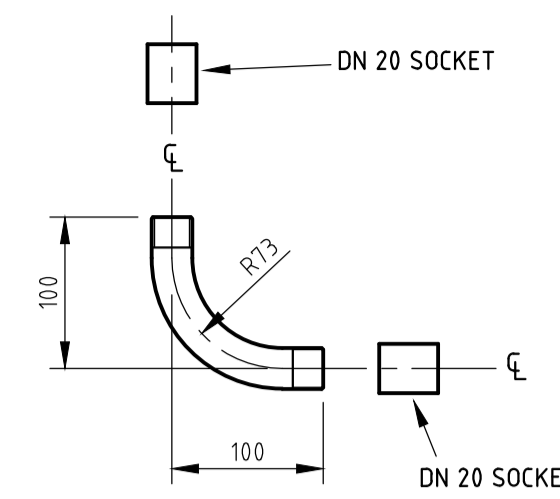
SWEEP TAKE-OFF DETAIL

SCALE 1:5
MATERIAL - DN25 GALV STEEL PIPE ENDS THREADED 25 BSP



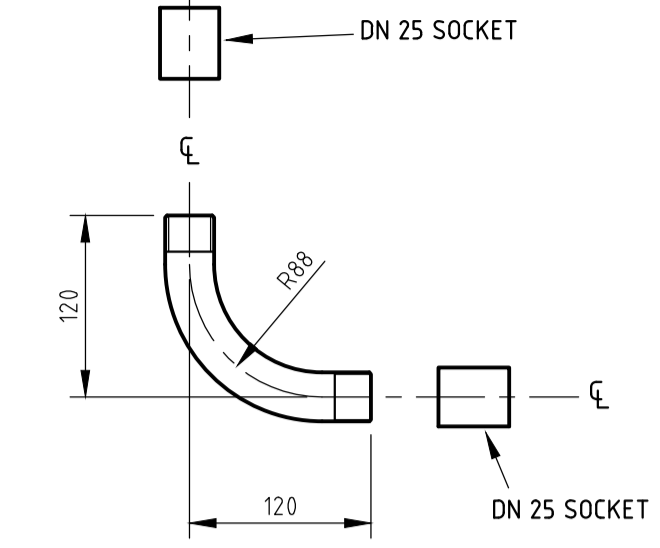
SWEEP TEE

SCALE 1:5
MATERIAL - DN25 GALV STEEL PIPE ENDS THREADED 25 BSP



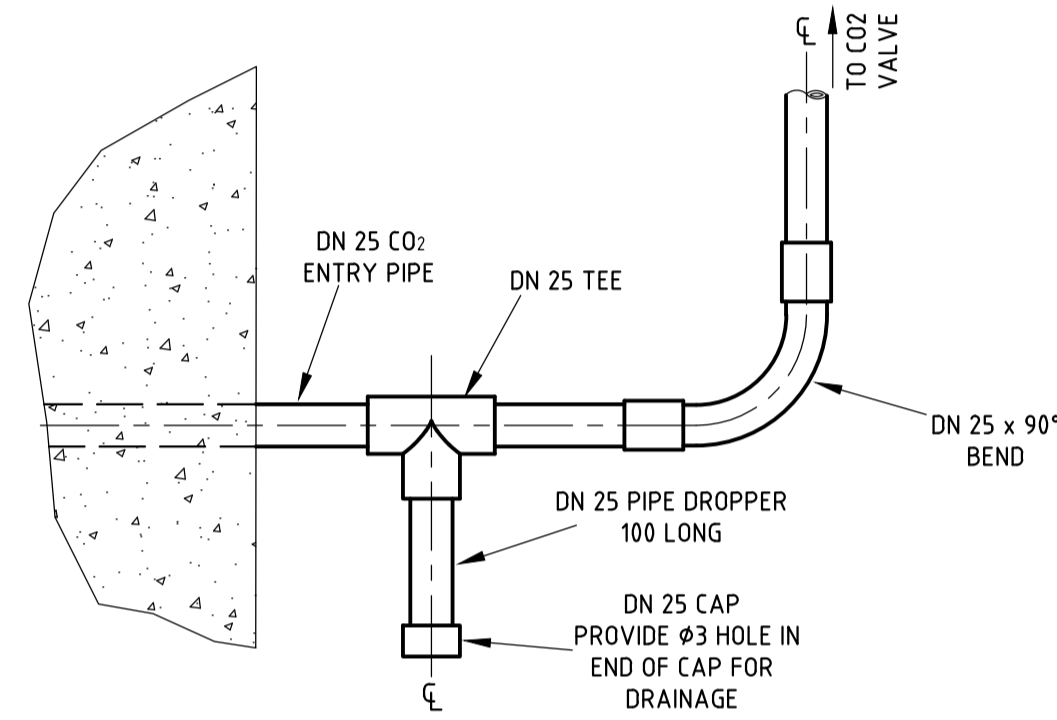
90° BEND

SCALE 1:5
MATERIAL - DN20 GALV STEEL PIPE ENDS THREADED 20 BSP



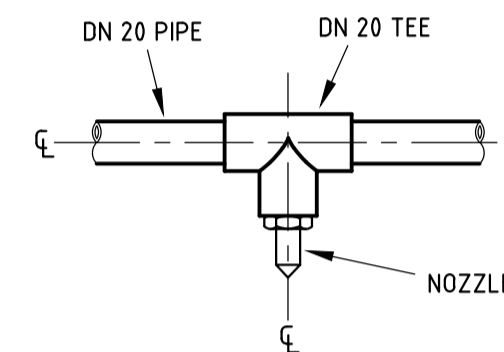
90° BEND

SCALE 1:5
MATERIAL - DN25 GALV STEEL PIPE ENDS THREADED 25 BSP



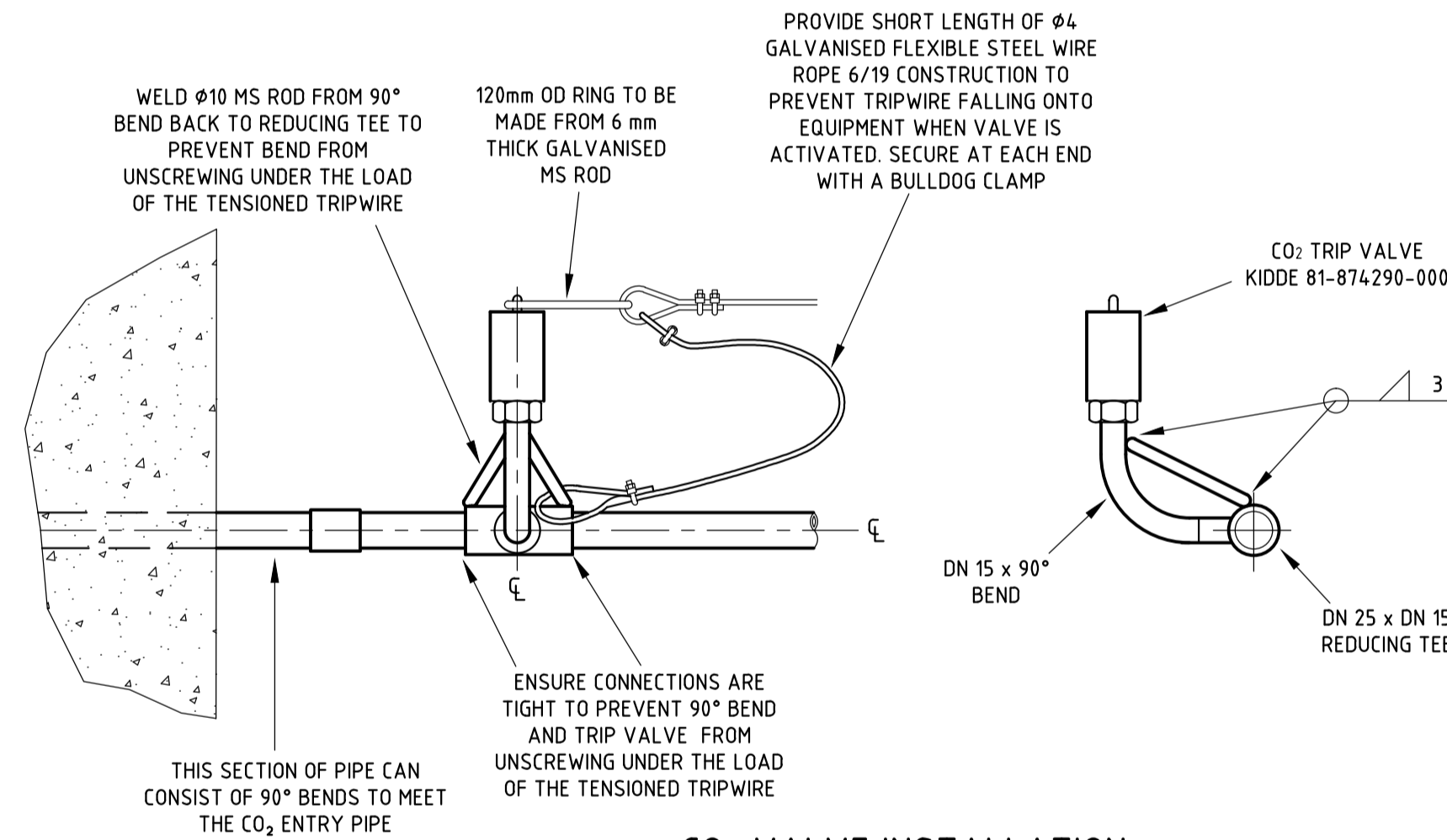
LOW CO₂ ENTRY DRAIN DETAIL

SCALE 1:5
TO BE USED WHERE CO₂ PIPE ENTRY IS LOWER THAN THE RING MAIN



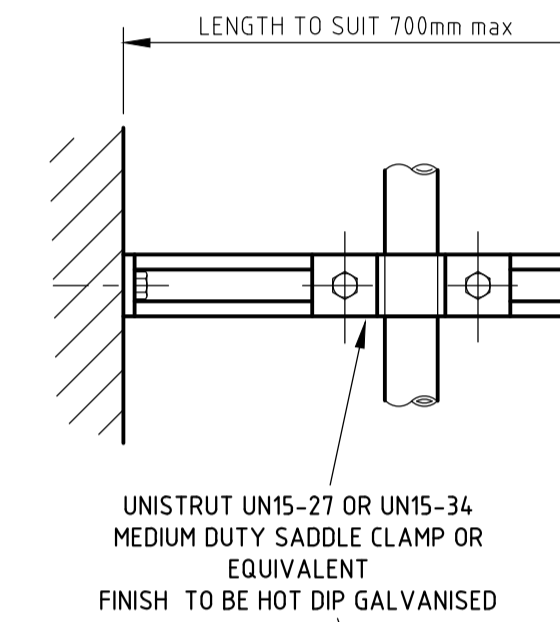
NOZZLE DETAIL

SCALE 1:5
REFER DRAWING 2064 FOR NOZZLE

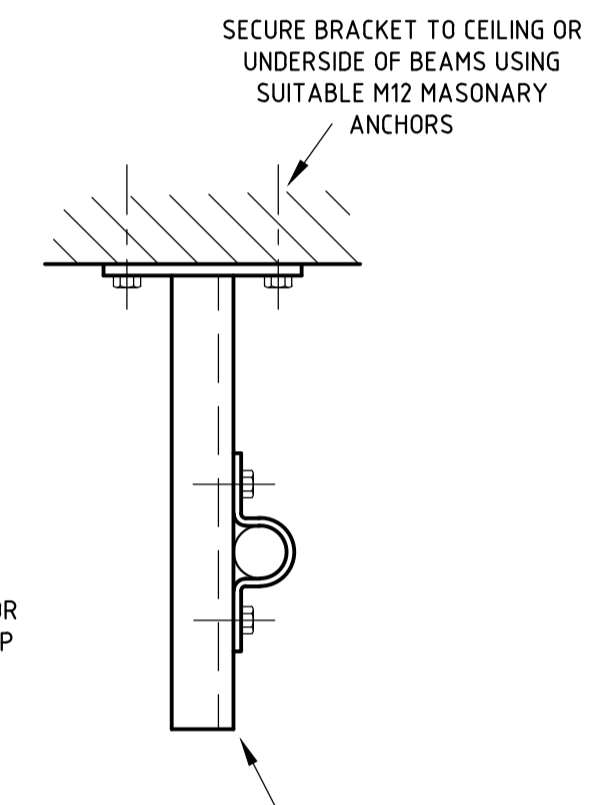


CO₂ VALVE INSTALLATION

SCALE 1:5



TYPE A
WALL MOUNTED



TYPE B
CEILING MOUNTED

TYPICAL MOUNTING BRACKETS

SCALE 1:5
OTHER TYPE OF BRACKETS WILL BE CONSIDERED PROVIDING THEY AFFORD THE EQUIVALENT SUPPORT AND RIGIDITY TO THE PIPEWORK

REFERENCE DRAWINGS

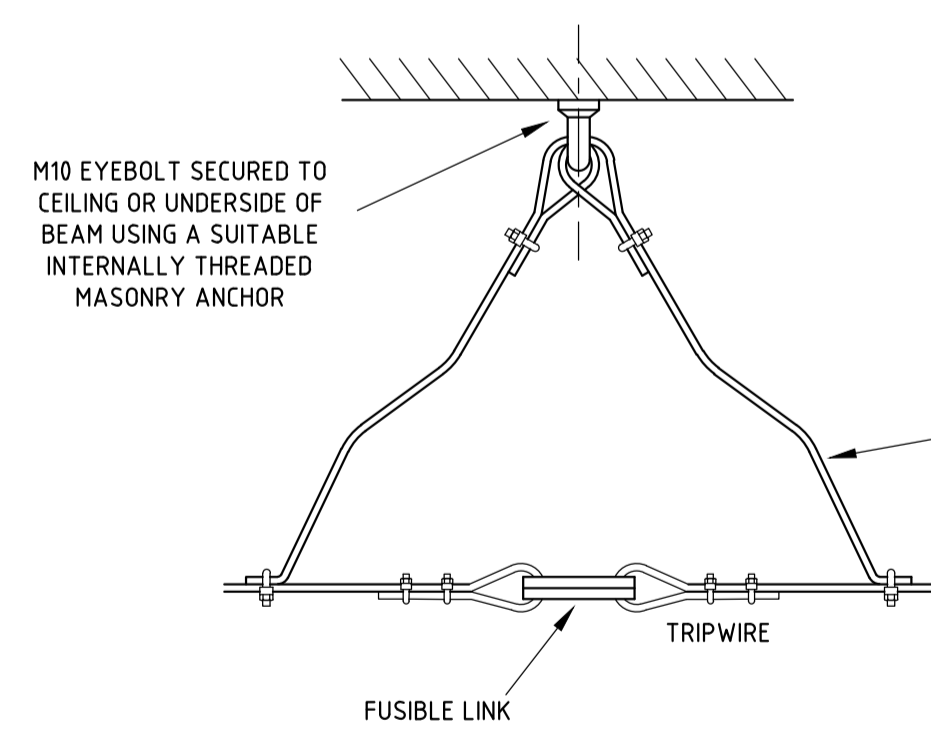
DISTRIBUTION SUBSTATIONS BASEMENT CHAMBERS
CO₂ PIPEWORK AND TRIPWIRES TYPICAL ARRANGEMENT - 184.970

NOTES

- THIS DRAWING IS TO BE READ IN CONJUNCTION WITH NETWORK STANDARD 113.
- ALL PIPE FITTINGS TO BE 20NB GALV HEAVY AND 25NB GALV HEAVY TO AS1074.
- MATERIAL AND WORKMANSHIP TO BE IN ACCORDANCE WITH AS4100.
- WELDING TO BE IN ACCORDANCE WITH AS 1554 PART 1.
- WALL AND CEILING BRACKETS TO BE HOT DIP GALVANISED.
- NUTS, BOLTS AND WASHERS ARE TO BE HOT DIP GALVANISED TO AS 1214.
- WHERE GALVANISING FINISH HAS BEEN REMOVED, THE AREA IS TO BE TREATED WITH COLD GALVANISING PAINT. COATINGS TO BE APPLIED IN ACCORDANCE WITH MANUFACTURER'S INSTRUCTIONS.

**NUMBER OF CO₂ BOTTLES & NOZZLES
REQUIRED FOR SUBSTATION VOLUME**

SUBSTATION VOLUME	NUMBER OF BOTTLES	NUMBER OF NOZZLES
UP TO 56 m ³	2	2
57 TO 112 m ³	4	4
113 TO 168 m ³	6	6
169 TO 224 m ³	8	8
225 TO 280 m ³	10	10
281 TO 336 m ³	12	12

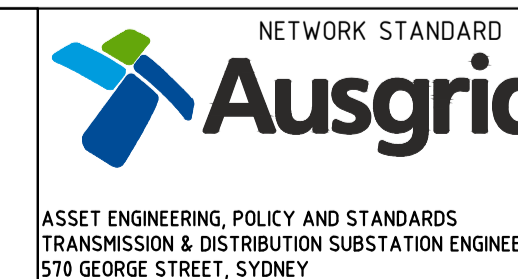


TRIPWIRE SUPPORT DETAIL

SCALE 1:5
SUPPORT WIRE ARE TO BE LONG ENOUGH TO ENSURE DAMPERS ARE RELEASED UPON ACTIVATION OF THE CO₂ VALVE OR FUSIBLE LINKS AND IS TO BE POSITIONED SO THAT THE TRIPWIRE DOES NOT FALL ONTO EQUIPMENT

CAD DRAWING
DO NOT MANUALLY AMEND
A M E N D M E N T S
6. NEW DRAWING MADE
DRAWING RE-TITLED AND
ALTERED TO ALIGN WITH
NETWORK STANDARDS.
CO₂ TRIP VALVE DETAILS
P. JARVIS, 23.9.17
CHECKED: P. TURBIN
APPROVED: D. GRCEV
7. NUMBER OF NOZZLES IN
TABLE TO BE 12
P. JARVIS, 8.11.17
CHECKED: P. TURBIN
APPROVED: D. GRCEV

CONSTRUCTION



ASSET ENGINEERING, POLICY AND STANDARDS
TRANSMISSION & DISTRIBUTION SUBSTATION ENGINEERING
570 GEORGE STREET, SYDNEY

SCALE
DESIGNED AS SHOWN
DRAWN
CHECKED
APPROVED
DATE
PROJECT NUMBER
PROJ/TRAK NUMBER

DISTRIBUTION SUBSTATIONS
BASEMENT CHAMBERS
CO₂ PIPEWORK, BRACKETS AND TRIPWIRE
DETAILS

SIZE A1 DRAWING No 117634 SHEET 1 OF 7