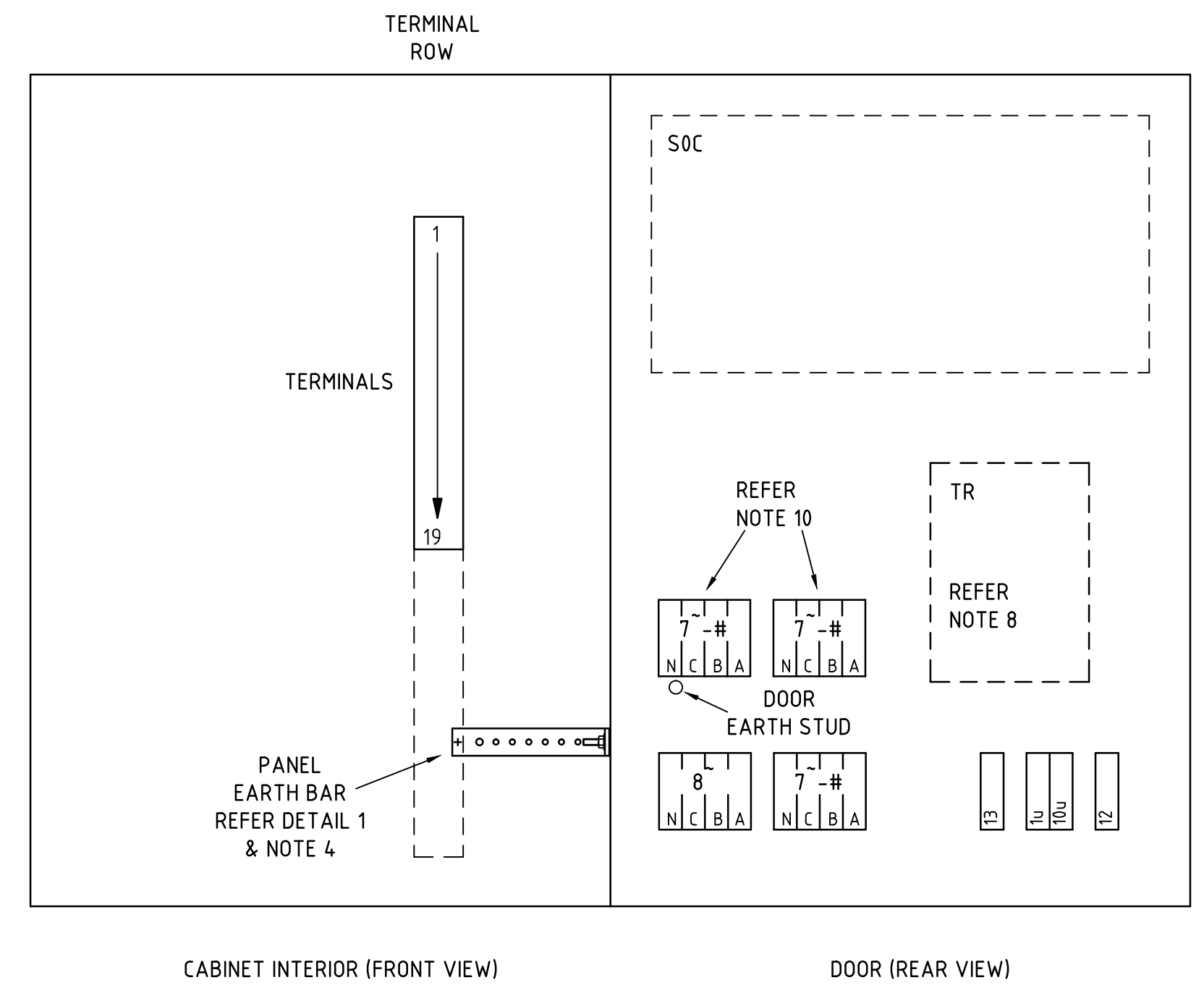
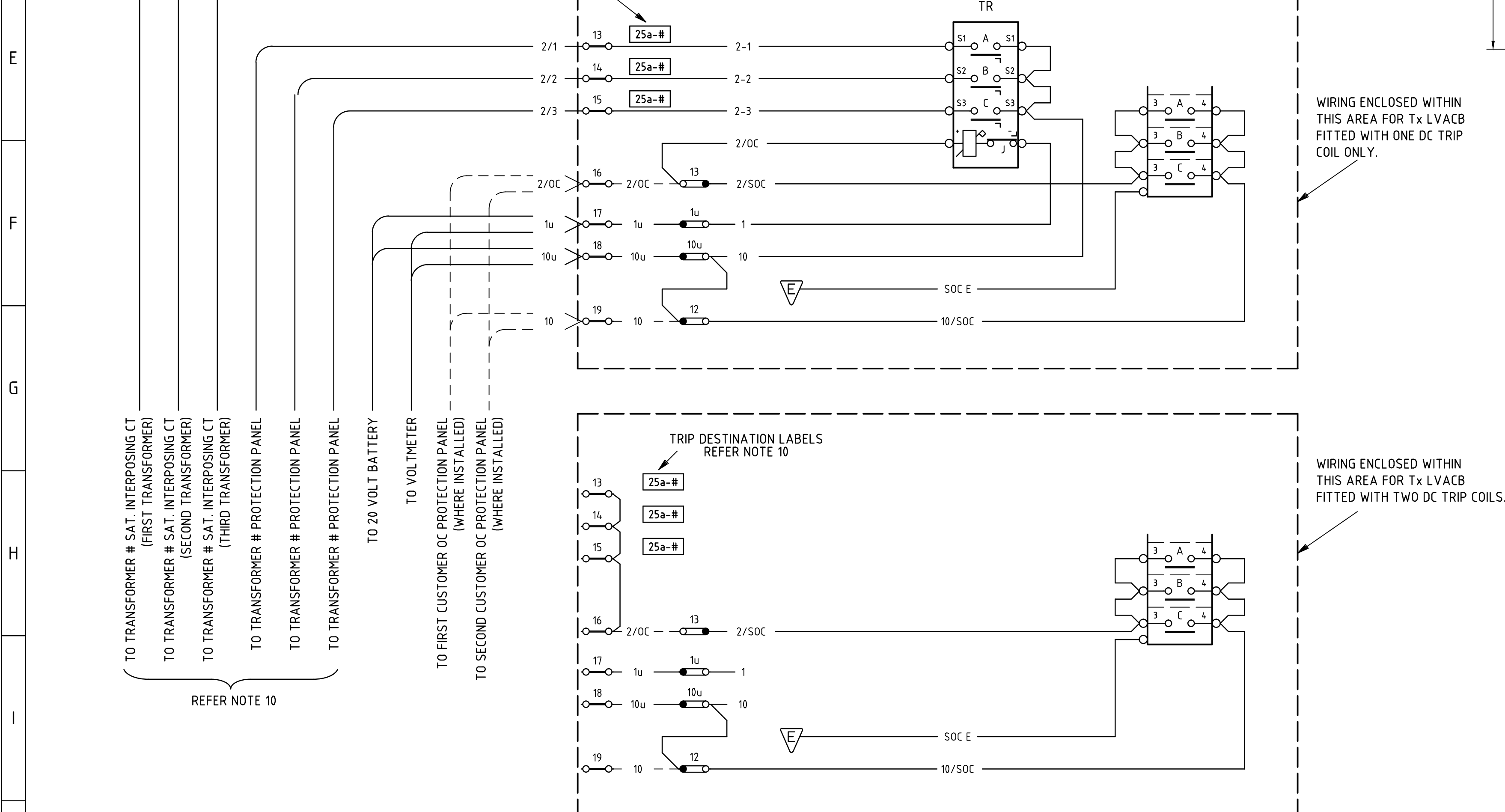


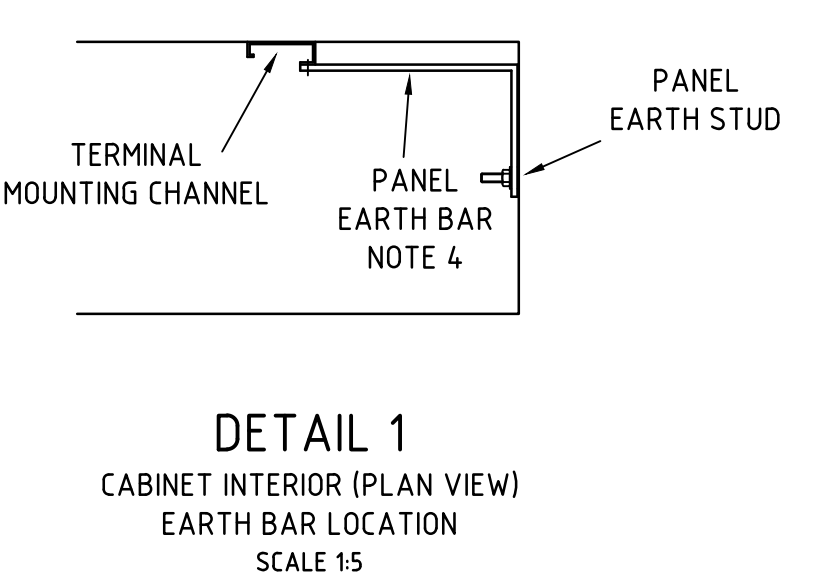
REFERENCE DRAWINGS	
RMICB SUBS WITH E LV BOARDS AC / DC SCHEMATICS	A0-178232
RMICB SUBS WITH H2 LV BOARDS, LV Tx & CUSTOMER ACB'S AC / DC SCHEMATICS	B1-167467
RMICB SUBSTATIONS WITH H2 LV BOARDS SCHEMATICS	B1-115249
CITY SUBSTATIONS WITH H2 LV BOARDS & MITSUBISHI M12 ACB'S - AC/DC SCHEMATICS	B1-174462
DISTRIBUTION SUBSTATIONS LABELS & MOULDED LINK DETAILS	B1-178241
DISTRIBUTION SUBSTATIONS PROTECTION RELAYS DRILLING DETAILS	A2-191086
LOOM METHOD OF PANEL WIRING	A1-52474
UTILUX H3820 RAIL MOUNTED TERMINALS	A3-118547
WALL MOUNTED RELAY PANEL STEELWORK	A1-28632

LEGEND		
SYMBOL	DESCRIPTION	TYPE
SOC	SUMMATED OVERCURRENT RELAY	CDG 33
TR	MULTITRIPPING RELAY	2HS522K10
	TERMINALS UTILUX TYPE H3820 WITH UTILUX H2233 MOUNTING CHANNEL	

- NOTES**
- THIS DRAWING SHOWS THE SUMMATED OVERCURRENT PROTECTION PANEL & WIRING TO BE USED IN CHAMBER TYPE SUBSTATIONS AND SHOULD BE READ IN CONJUNCTION WITH NETWORK STANDARDS AND THE SUBSTATION DESIGN INFORMATION PACKAGE.
  - ALL PANEL WIRING IS TO BE 7/0.67, 0.6kV V75 GRADE WITH PVC INSULATION. ALL INSULATION IS TO BE GREY COLOURED EXCEPT FOR EARTH WIRES WHICH ARE TO BE GREEN/YELLOW.
  - A DOT ON A LINK ( ) INDICATES BOTTOM TERMINAL.
  - A 25mm x 4mm HDHC COPPER EARTH BAR IS TO BE MADE AND BOLTED TO THE CABINET EARTH STUD AND THE TERMINAL ROW B MOUNTING CHANNEL AS SHOWN IN DETAIL 1. THE EARTH BAR IS TO BE DRILLED TO ACCOMMODATE INDIVIDUAL CONNECTIONS FROM THE PANEL DOOR, LINKS, RELAY CASES AND THE 6mm CABLE FROM THE SUBSTATION EARTH BAR. CONNECTIONS ARE TO BE EVENLY SPACED SPACED ALONG LENGTH OF EARTH BAR.
  - EARTH CONNECTIONS DESIGNATED ARE TO BE CONNECTED INDIVIDUALLY TO THE EARTH BAR.
  - FOR LOOM METHOD OF WIRING REFER TO DRAWING A1-52474.
  - THIS WALL MOUNTED PANEL IS TO BE CONSTRUCTED IN ACCORDANCE WITH MARK 1 OF DWG A2-28630.
  - THE MULTITRIPPING RELAY (TR) IS REQUIRED WHEN TxLV ACB'S ARE FITTED WITH ONLY ONE DC TRIP COIL.
  - LABELS ARE TO BE MADE AND POSITIONED AS SHOWN ON DRAWING B1-178241. DRILLING FOR RELAYS AND LINKS ARE SHOWN ON DRAWINGS B1-178241 AND A2-191086.
  - THE TRANSFORMER NUMBER FOR THE RELEVANT SUBSTATION IS TO BE SUBSTITUTED WHERE # APPEARS. THE LINKS ASSOCIATED WITH LABELS 5 & 8 ARE FOR THE FIRST TRANSFORMER. THE LINKS ASSOCIATED WITH LABELS 6 & 9 ARE FOR THE SECOND TRANSFORMER. THE LINKS ASSOCIATED WITH LABELS 7 & 10 ARE FOR THE THIRD TRANSFORMER.



LABEL DETAILS						
LABEL	LABEL SIZE	COLOUR	TEXT LINE	TEXT HEIGHT	ENGRAVING	No OFF
1	C8	GRAVOPLY No.200 WHITE/BLACK	LINE 1 LINE 2	8 8	SUMMATED OVERCURRENT	1
2	C2	GRAVOPLY No.200 WHITE/BLACK	LINE 1 LINE 2 LINE 3	2.5 2.5 2.5	SUMMATED TRANSFORMER OVERCURRENT BATTERY LINK	1
3	C3	TRAFFOLYTE RED/WHITE/RED	LINE 1 LINE 2 LINE 3 LINE 4	4.0 2.5 2.5 2.5	10 1 20V DC BUS MASTER BATTERY LINKS	1
4	C2	TRAFFOLYTE YELLOW/BLACK/YELLOW	LINE 1 LINE 2 LINE 3	2.5 2.5 2.5	SUMMATED TRANSFORMER OVERCURRENT TRIP LINK	1
5	C2	TRAFFOLYTE YELLOW/BLACK/YELLOW	LINE 1 LINE 2 LINE 3	2.5 2.5 2.5	TRIP TO TRANSFORMER # TRIP LINK LOCATED ON TRANSFORMER # PANEL 25a-#	1
6	C2	TRAFFOLYTE YELLOW/BLACK/YELLOW	LINE 1 LINE 2 LINE 3	2.5 2.5 2.5	TRIP TO TRANSFORMER # TRIP LINK LOCATED ON TRANSFORMER # PANEL 25a-#	1
7	C2	TRAFFOLYTE YELLOW/BLACK/YELLOW	LINE 1 LINE 2 LINE 3	2.5 2.5 2.5	TRIP TO TRANSFORMER # TRIP LINK LOCATED ON TRANSFORMER # PANEL 25a-#	1
8	C1	GRAVOPLY No.259 PINE GREEN/WHITE	LINE 1 LINE 2 LINE 3 LINE 4	4.0 2.5 2.5 2.5	A B C N TRANSFORMER # SUMMATED OVERCURRENT 7~# SUMMATION LINKS	1
9	C1	GRAVOPLY No.259 PINE GREEN/WHITE	LINE 1 LINE 2 LINE 3 LINE 4	4.0 2.5 2.5 2.5	A B C N TRANSFORMER # SUMMATED OVERCURRENT 7~# SUMMATION LINKS	1
10	C1	GRAVOPLY No.259 PINE GREEN/WHITE	LINE 1 LINE 2 LINE 3 LINE 4	4.0 2.5 2.5 2.5	A B C N TRANSFORMER # SUMMATED OVERCURRENT 7~# SUMMATION LINKS	1
11	C1	GRAVOPLY No.259 PINE GREEN/WHITE	LINE 1 LINE 2 LINE 3 LINE 4	4.0 2.5 2.5 2.5	A B C N TRANSFORMER # SUMMATED OVERCURRENT RELAY TEST LINKS 8~	1



CAD DRAWING  
DO NOT MANUALLY AMEND  
A. REVISIONS

3. DRAWING REVISED TO ALLOW FOR CITY & SUBURBAN USE. LABEL DETAILS ADDED. SOC WAS 20C.  
4. WIRE NUMBERS CORRECTED TO ALIGN WITH SCHEMATIC NOTES & REFERENCE DRAWINGS UPDATED.  
PN 10/3/59/1/6  
JH 11/7/07  
CHECKED: PWJ  
APPROVED: PIE

4. WIRE NUMBERS FROM SAT INTERPOSING CT'S CORRECTED.  
PN 208/6/9/4  
PWJ 10/9/07  
CHECKED: PIE  
APPROVED: PIE

5. TR RELAY WAS FRH. TERMINALS AND RAIL ADDED TO LEGEND.  
TERMINALS WERE SHOWN HORIZONTALLY MOUNTED.  
REF DWG A0-178232 ADDED.  
PN 208/6/9/2  
PWJ 22/108  
CHECKED: PIE  
APPROVED: PIE

6. EARTH BAR DETAILS AND NOTE 4, ADDED.  
EARTHING CONNECTIONS REVISED.  
NOTES RENUMBERED.  
TERMINALS RELOCATED TO ROW B.  
REF DRAWINGS DELETED FROM LEGEND.  
REF DWG A2-191086 ADDED.  
NOTE 9 ALTERED.  
PN 208/6/9/2  
PWJ 22/108  
CHECKED: PIE  
APPROVED: PIE

7. NEW AUSGRID BORDER & LOGO ADDED.  
24-09-2013  
RLAALAA  
TLAMPARD  
APPROVED



SCALE	AS SHOWN
DESIGNED	-
DRAWN	D.R.B.
CHECKED	P.I.E.
APPROVED	-
DATE	22/08/91
PRJ/TRK No.	-
PROJECT NUMBER	-

CITY AND SUBURBAN  
DISTRIBUTION CENTRES  
WALL MOUNTED SUMMATED  
OVERCURRENT PROTECTION PANEL  
DRILLING, WIRING AND CABLING

DRAWING No **118559** SHEET - AMD 7 SIZE B1