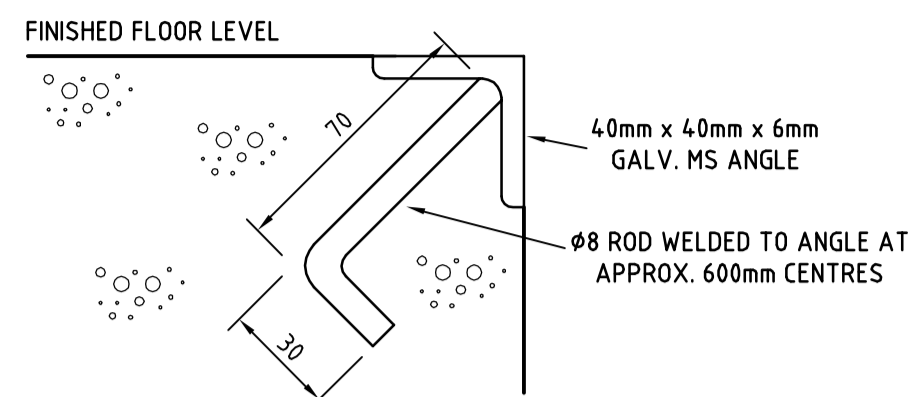
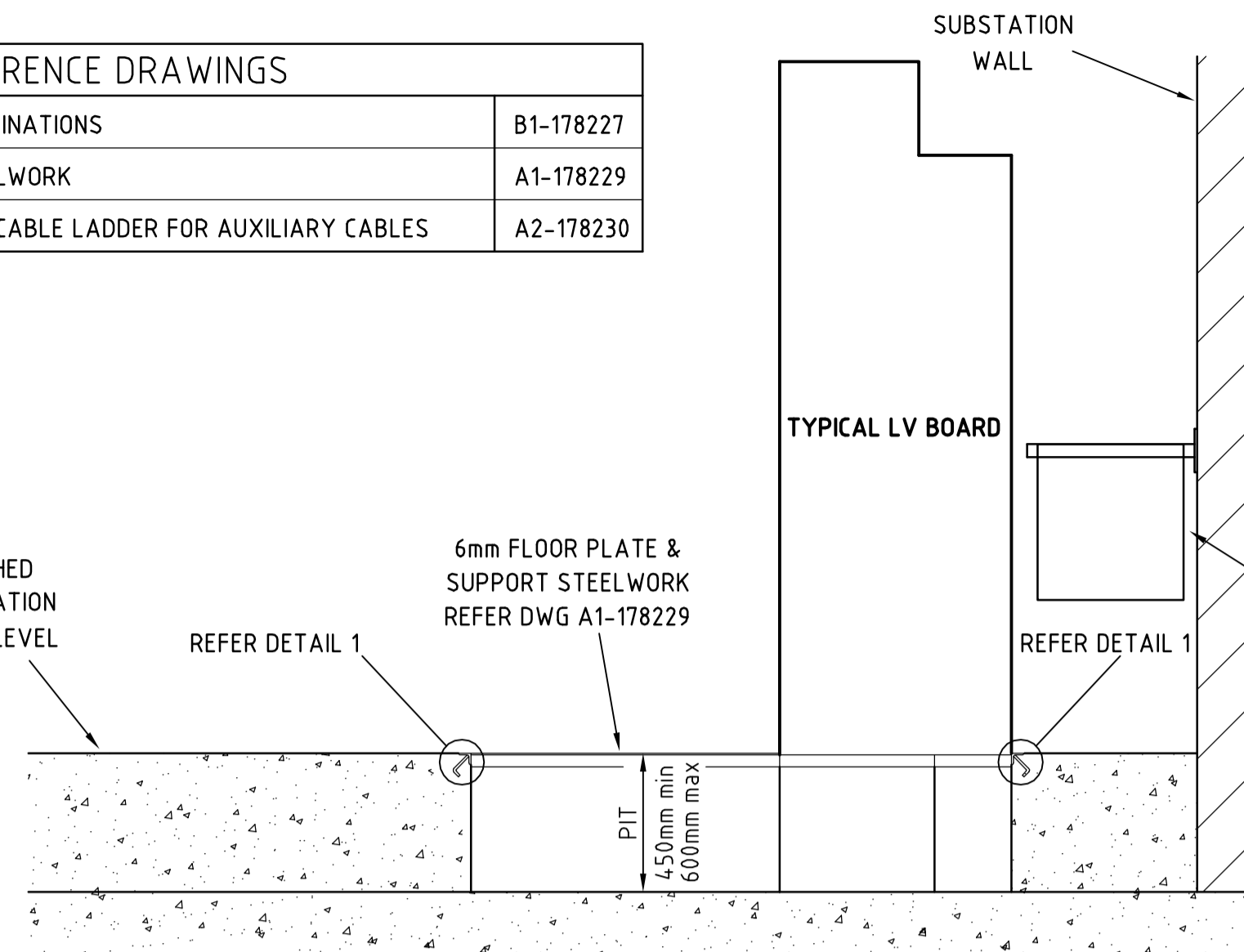


REFERENCE DRAWINGS	
E TYPE LV BOARD ACCEPTABLE COMBINATIONS	B1-178227
E TYPE LV BOARD SUPPORTING STEELWORK	A1-178229
E TYPE LV BOARD INSTALLATION OF CABLE LADDER FOR AUXILIARY CABLES	A2-178230



DETAIL 1
ANGLE NOSING
(SCALE 1:2)

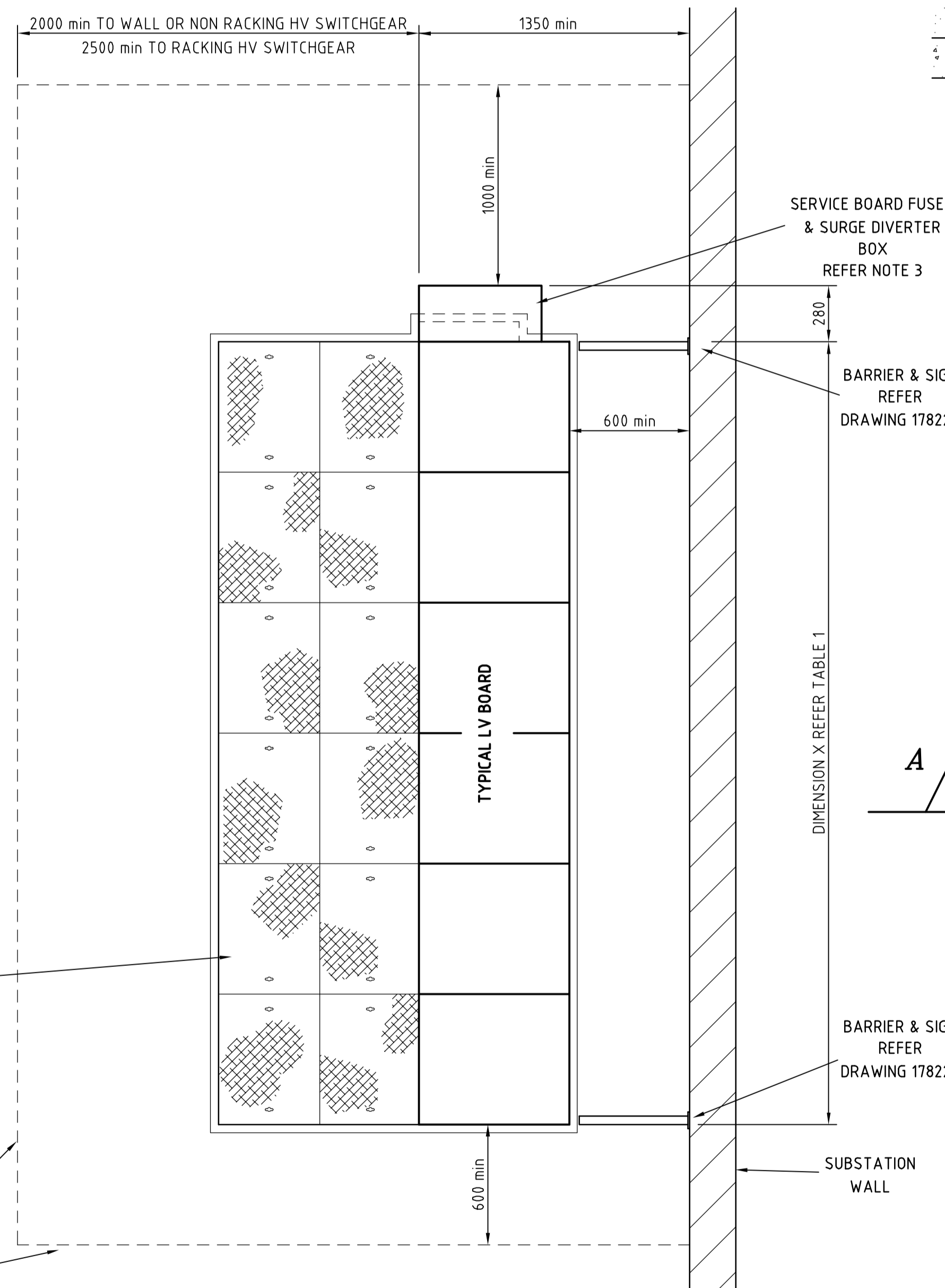


SECTION A-A
SCALE 1:20

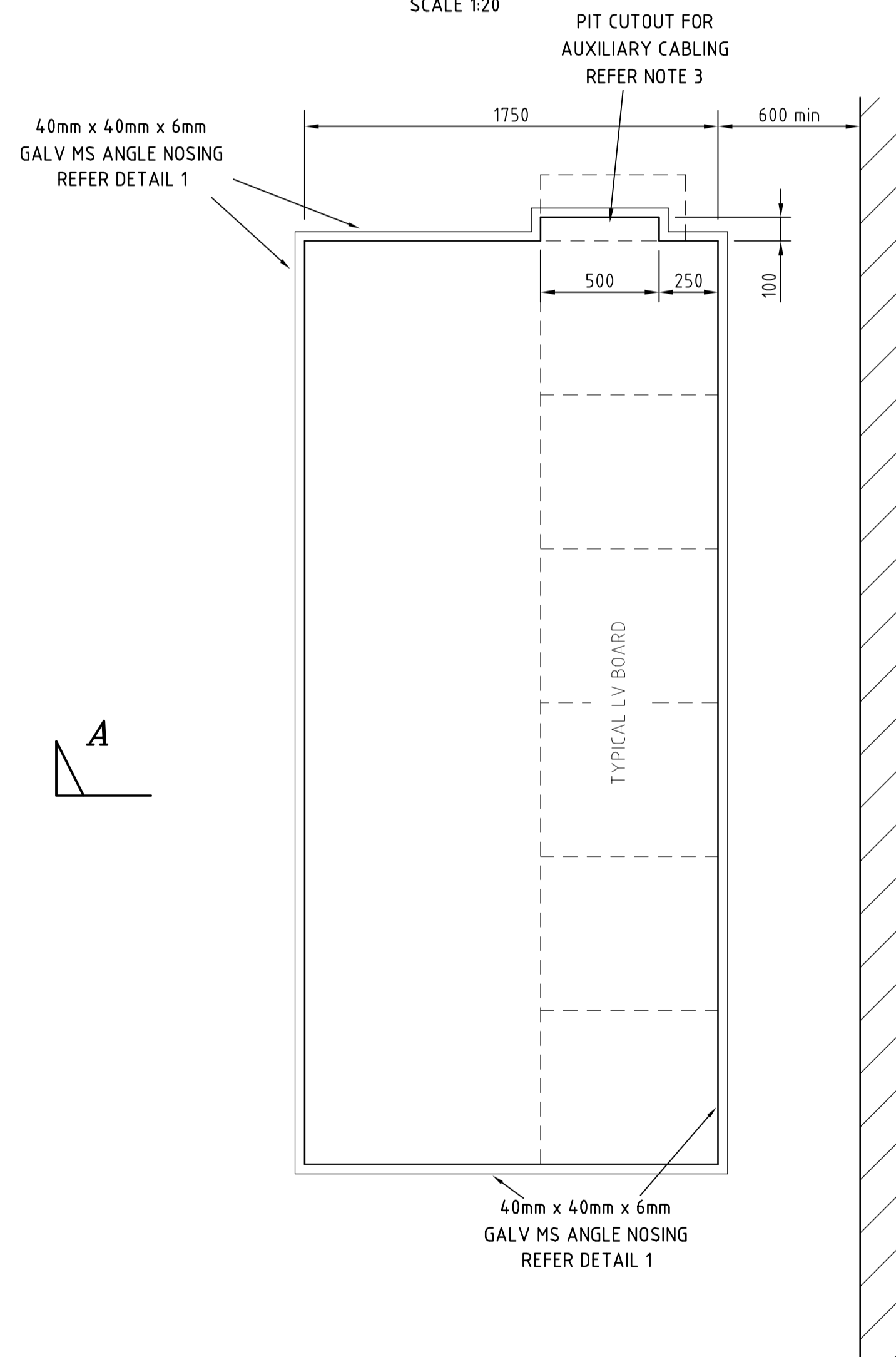
NOTES

- THIS DRAWING SHOWS CLEARANCES REQUIRED AROUND E TYPE LV BOARDS AND THE SIZE AND CONSTRUCTION OF THE ASSOCIATED PIT.
FOR THE ARRANGEMENT OF THE E TYPE LV BOARD FOR AN INDIVIDUAL SUBSTATION REFER TO THE DESIGN INFORMATION AND DRAWINGS OF THAT SUBSTATION.
- THIS DRAWING IS TO BE READ IN CONJUNCTION WITH RELEVANT NETWORK STANDARDS.
- EACH SUBSTATION REQUIRES A SERVICE BOARD CONTROLLING FUSE & SURGE ARRESTER BOX TO BE INSTALLED AT EITHER END OF THE LV BOARD.
HOWEVER, IF THE LV BOARD CONTAINS A NORMALLY OPEN BUS SECTION SWITCH, THIS BOX MUST BE INSTALLED AT EACH END OF THE LV BOARD. THE SURGE ARRESTERS ARE TO BE CONNECTED IN BOTH BOXES AND THE SERVICE BOARD FUSES ARE TO BE CONNECTED IN THE BOX CLOSEST TO THE SUBSTATION SERVICE BOARD. THE CLEARANCE IN FRONT OF THE SERVICE BOARD FUSE & SURGE ARRESTER BOX IS 1000mm IRRESPECTIVE OF WHICH END OF THE LV BOARD THE BOX IS INSTALLED.
- THE PIT DEPTH CAN VARY BETWEEN 450mm AND 600mm DEPENDING ON THE BENDING RADIUS OF CABLES AND ARRANGEMENT OF THE SUBSTATION.
- THE LENGTH OF THE PIT CAN BE EXTENDED TO ALLOW CABLE ENTRY, THE BENDING RADIUS OF THE CABLES OR TO ACCOMMODATE FUTURE PANELS. ANY PIT EXTENSION MUST BE IN MULTIPLES OF 650mm.

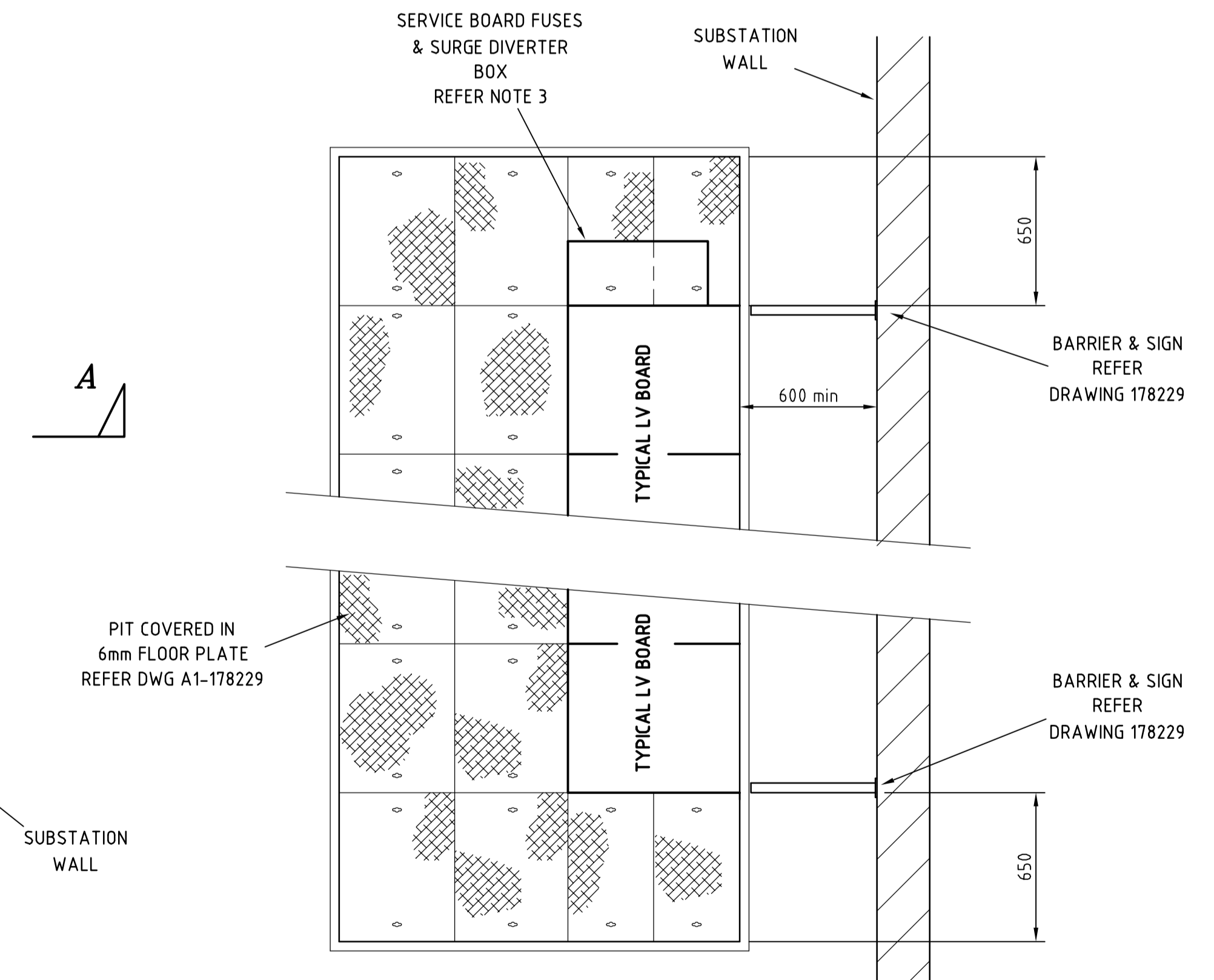
TABLE 1		
NUMBER OF PANELS	WITHOUT BUS SECTION	WITH BUS SECTION
1	650	-
2	1300	-
3	1950	-
4	2600	-
5	3250	3550
6	3900	4200
7	4550	4850
8	5200	5500
9	5850	6150
10	6500	6800



PLAN SHOWING LV BOARD & CLEARANCES
SCALE 1:20



PLAN SHOWING PIT
SCALE 1:20



PLAN SHOWING ACCEPTABLE PIT EXTENSIONS
REFER NOTE 5
SCALE 1:20

CAD DRAWING
DO NOT MANUALLY AMEND
A.M.E.N.D.M.E.N.T.S
1. CLEARANCE DIMENSIONS IN FRONT OF LV BOARD
2. DIMENSIONS OF SERVICE BOARD FUSES & SURGE ARRESTER BOX ADDED.
NOTE 3 ADDED.
PN 208/6/9/4
P.JARVIS 20.8.07
CHECKED: IROBSON
APPROVED: M.THOMSON
Z. AUSGRID BORDER ADDED.
DETAIL 1 UPDATED.
BARRIERS & SIGNS ADDED.
PN PM02-2010-1-5-1
P.JARVIS 9.7.12
CHECKED: P.TURRIN
APPROVED: P.TURRIN

CONSTRUCTION

NETWORK STANDARD
Ausgrid
DISTRIBUTION OPERATIONS & RELIABILITY
LOGISTICS AND DISTRIBUTION ENGINEERING
25-27 POMEROY STREET, HOMEBUSH

SCALE	AS SHOWN
DESIGNED	P.JARVIS
DRAWN	P.JARVIS
CHECKED	M.PEACOCK
APPROVED	P.HALLEN
DATE	6.3.07
PROJECT NUMBER	103/59/1/6
PROJTRAK NUMBER	

E TYPE LV BOARD CLEARANCES, PIT DESIGN AND PIT CONSTRUCTION