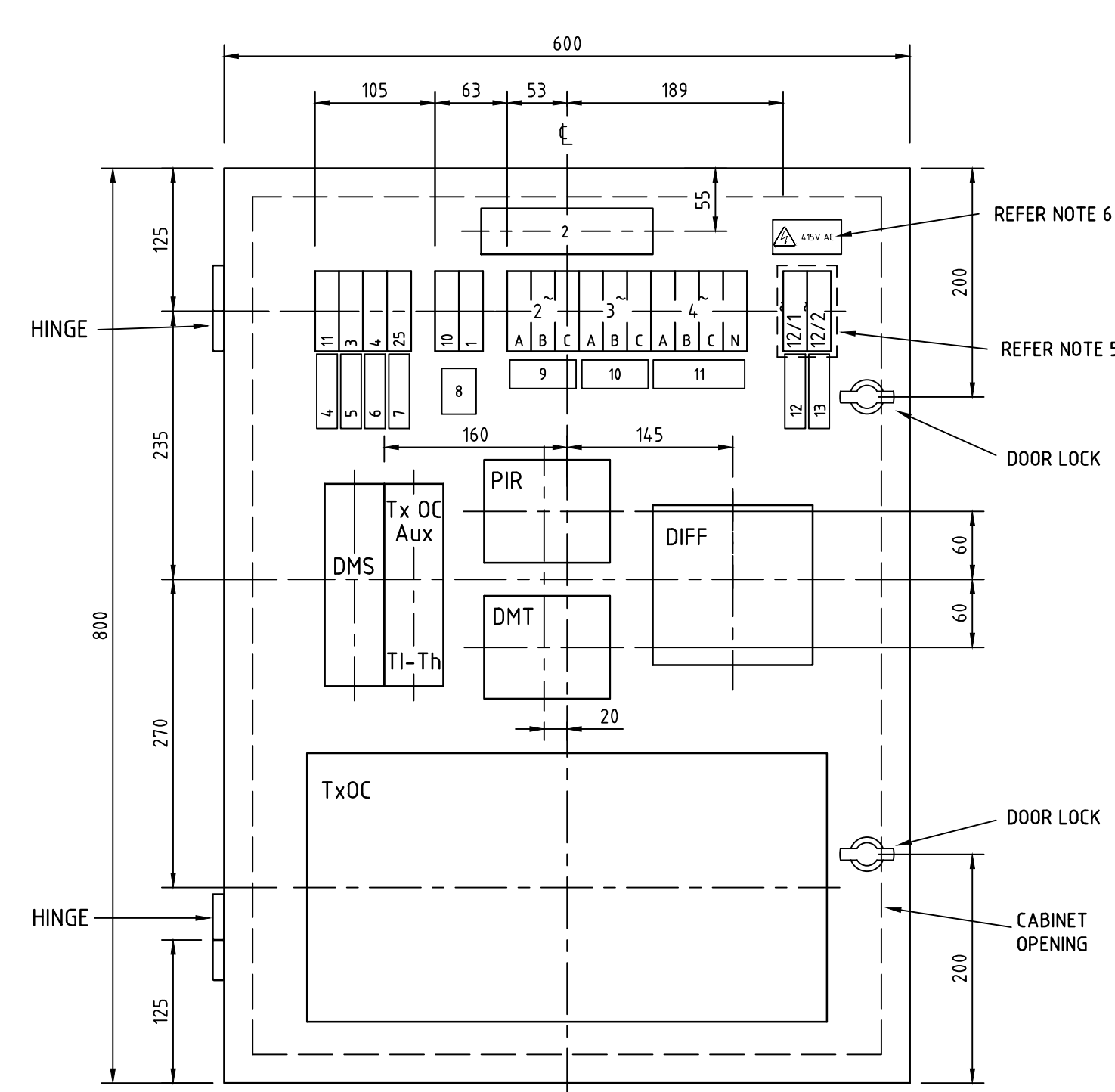
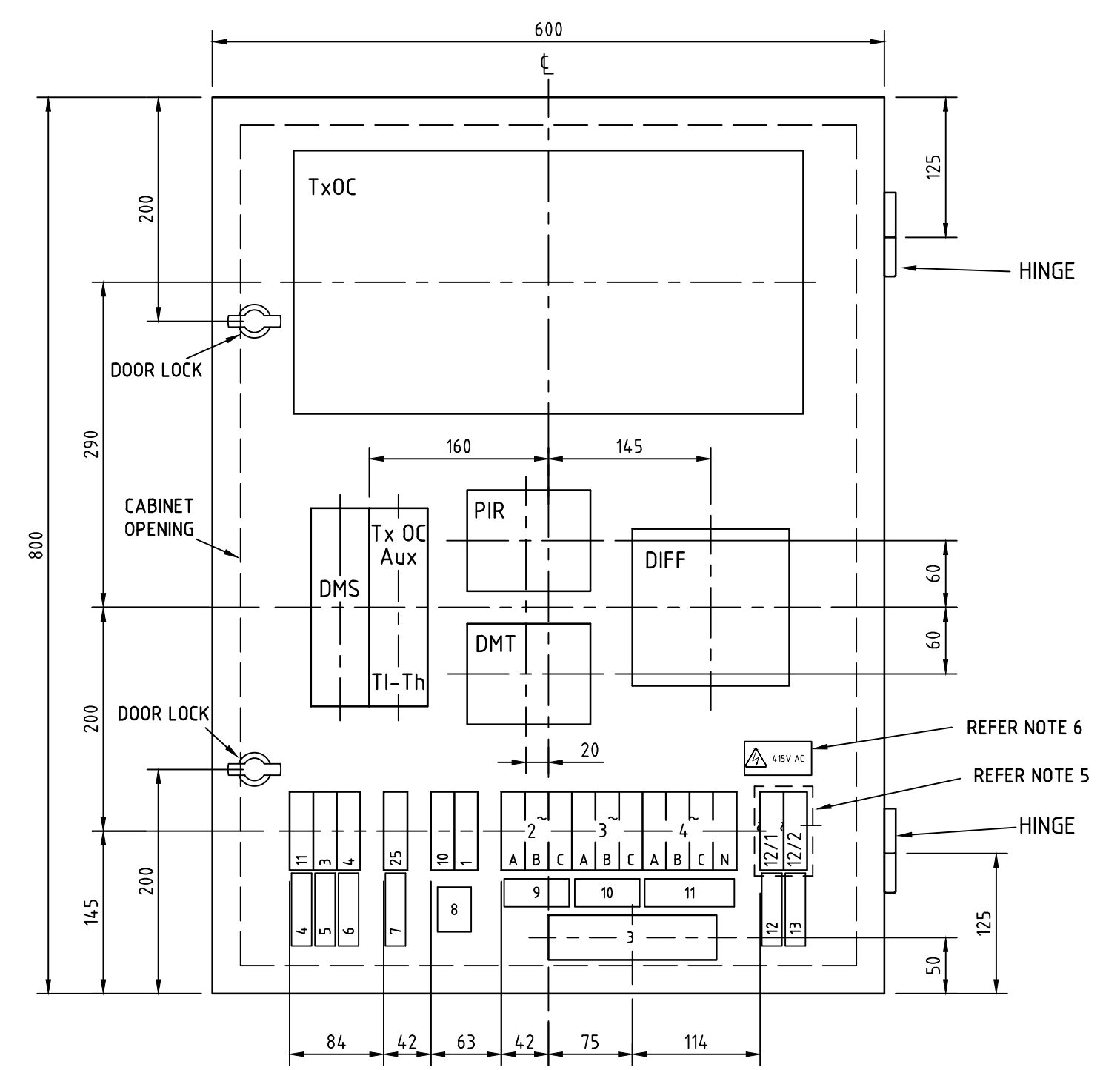
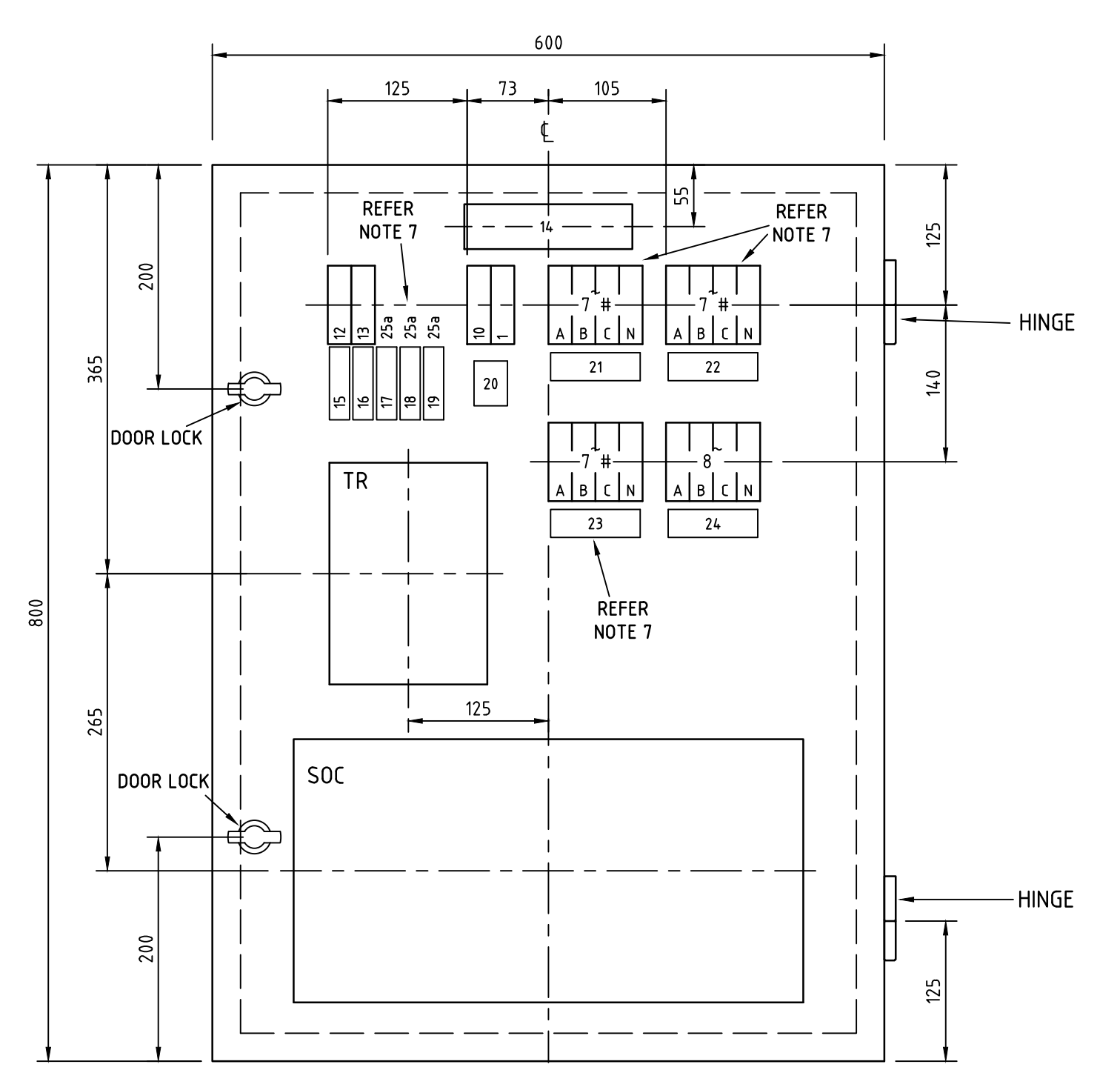


UPPER DOORS



LOWER DOORS



TRANSFORMER/TRANSFORMER

TRANSFORMER/SUMMATED OVERCURRENT

LABEL DETAILS						
LABEL	LABEL SIZE	COLOUR	TEXT LINE	TEXT HEIGHT	ENGRAVING	No OFF
1	C8	GRAVOPLY No.200 WHITE/BLACK	LINE 1	8	TRANSFORMER #	1 REFER NOTE 7
2	C8	GRAVOPLY No.200 WHITE/BLACK	LINE 1	8	TRANSFORMER #	1 REFER NOTE 7
3	C8	GRAVOPLY No.200 WHITE/BLACK	LINE 1	8	TRANSFORMER #	1 REFER NOTE 7
4	C2	GRAVOPLY No.200 WHITE/BLACK	LINE 1 LINE 2	2.5 2.5	THERMAL BATTERY LINK	1
5	C2	GRAVOPLY No.200 WHITE/BLACK	LINE 1 LINE 2	2.5 2.5	TRANSFORMER OVERCURRENT BATTERY LINK	1
6	C2	GRAVOPLY No.200 WHITE/BLACK	LINE 1 LINE 2	2.5 2.5	DIFFERENTIAL BATTERY LINK	1
7	C2	TRAFFOLYTE YELLOW/BLACK/YELLOW	LINE 1 LINE 2 LINE 3	2.5 2.5 2.5	CUSTOMER & SUMMATED TRANSFORMER OVERCURRENT TRIP LINK	1
8	C3	GRAVOPLY No.248 RED/WHITE	LINE 1 LINE 2 LINE 3 LINE 4	4.0 2.5 2.5 2.5	10 1 20V DC BUS MASTER BATTERY LINKS	1
9	C10	GRAVOPLY No.259 PINE GREEN/WHITE	LINE 1 LINE 2 LINE 3 LINE 4	4.0 2.5 2.5 2.5	A B C TRANSFORMER OVERCURRENT RELAY TEST LINKS	1
10	C10	GRAVOPLY No.259 PINE GREEN/WHITE	LINE 1 LINE 2 LINE 3 LINE 4	4.0 2.5 2.5 2.5	A B C TRANSFORMER OVERCURRENT RELAY DELTA TEST LINKS	1
11	C1	GRAVOPLY No.259 PINE GREEN/WHITE	LINE 1 LINE 2 LINE 3	4.0 2.5 2.5	A B C N DIFFERENTIAL RELAY TEST LINKS	1
12	C2	GRAVOPLY No.235 YELLOW/BLACK	LINE 1 LINE 2 LINE 3	2.5 2.5 2.5	PIR 415V AC TRIP ISOLATION LINK	1
13	C2	GRAVOPLY No.235 YELLOW/BLACK	LINE 1 LINE 2 LINE 3	2.5 2.5 2.5	DMT 415V AC TRIP ISOLATION LINK	1
14	C8	GRAVOPLY No.200 WHITE/BLACK	LINE 1 LINE 2	8 8	SUMMATED OVERCURRENT	1
15	C2	GRAVOPLY No.200 WHITE/BLACK	LINE 1 LINE 2 LINE 3	2.5 2.5 2.5	SUMMATED TRANSFORMER OVERCURRENT BATTERY LINK	1
16	C2	TRAFFOLYTE YELLOW/BLACK/YELLOW	LINE 1 LINE 2 LINE 3	2.5 2.5 2.5	SUMMATED TRANSFORMER OVERCURRENT TRIP LINK	1
17	C2	TRAFFOLYTE YELLOW/BLACK/YELLOW	LINE 1 LINE 2 LINE 3	2.5 2.5 2.5	TRIP TO TRANSFORMER # TRIP LINK LOCATED ON TRANSFORMER # PANEL	1 REFER NOTE 7
18	C2	TRAFFOLYTE YELLOW/BLACK/YELLOW	LINE 1 LINE 2 LINE 3	2.5 2.5 2.5	TRIP TO TRANSFORMER # TRIP LINK LOCATED ON TRANSFORMER # PANEL	1 REFER NOTE 7
19	C2	TRAFFOLYTE YELLOW/BLACK/YELLOW	LINE 1 LINE 2 LINE 3	2.5 2.5 2.5	TRIP TO TRANSFORMER # TRIP LINK LOCATED ON TRANSFORMER # PANEL	1 REFER NOTE 7
20	C3	TRAFFOLYTE RED/WHITE/RED	LINE 1 LINE 2 LINE 3 LINE 4	4.0 2.5 2.5 2.5	10 1 20V DC BUS MASTER BATTERY LINKS	1
21	C1	GRAVOPLY No.259 PINE GREEN/WHITE	LINE 1 LINE 2 LINE 3 LINE 4	4.0 2.5 2.5 2.5	A B C N TRANSFORMER # SUMMATED OVERCURRENT SUMMATION LINKS	1 REFER NOTE 7
22	C1	GRAVOPLY No.259 PINE GREEN/WHITE	LINE 1 LINE 2 LINE 3 LINE 4	4.0 2.5 2.5 2.5	A B C N TRANSFORMER # SUMMATED OVERCURRENT SUMMATION LINKS	1 REFER NOTE 7
23	C1	GRAVOPLY No.259 PINE GREEN/WHITE	LINE 1 LINE 2 LINE 3 LINE 4	4.0 2.5 2.5 2.5	A B C N TRANSFORMER # SUMMATED OVERCURRENT SUMMATION LINKS	1 REFER NOTE 7
24	C1	GRAVOPLY No.259 PINE GREEN/WHITE	LINE 1 LINE 2 LINE 3 LINE 4	4.0 2.5 2.5 2.5	A B C N TRANSFORMER # SUMMATED OVERCURRENT RELAY TEST LINKS	1

LEGEND		
SYMBOL	DESCRIPTION	TYPE
TxOC	TRANSFORMER OVERCURRENT RELAY	CDG 33
Tx OC AUX	TRANSFORMER OVERCURRENT AUXILIARY TRIP INDICATOR	TI-2 CITY
DIFF	DIFFERENTIAL RELAY	K3M
TI-Th	THERMAL TRIP INDICATOR	TI-2 CITY
PIR	PILOT INTERLOCK RELAY	PIR
DMT	TRIP AND SIGNAL RELAY	DMT
DMS	SIGNAL AND LOCKOUT RELAY	TI-3 (0.2)
SOC	TRANSFORMER OVERCURRENT RELAY	CDG 33
TR	MULTI-TRIP RELAY	2HS52K10

NOTES

- THIS DRAWING SHOWS THE DRILLING FOR FREE STANDING CITY PROTECTION CABINET TO BE USED IN CHAMBER TYPE CITY SUBSTATIONS AND IS TO BE READ IN CONJUNCTION WITH NETWORK STANDARDS AND THE SUBSTATION DESIGN INFORMATION PACKAGE.
- THE FREE STANDING PROTECTION CABINET IS TO BE CONSTRUCTED IN ACCORDANCE WITH DWG A0-205952. LABELS ARE TO BE MADE AND POSITIONED AS SHOWN ON DRAWING B1-178241.
- DRILLING FOR RELAYS AND LINKS ARE SHOWN ON DRAWINGS B1-178241 AND A2-191086.
- THE PIR TRIP LINKS ARE TO BE FITTED WITH CLEAR PLASTIC COVERS ON BOTH THE FRONT AND REAR OF THE PANEL.
- SELF ADHESIVE CAUTION LABELS ARE TO BE FIXED TO THE FRONT AND REAR OF THE PANEL DOOR AS SHOWN. THESE LABELS ARE TO READ: 415V AC
- SUBSTITUTE THE APPROPRIATE TRANSFORMER NUMBER WHERE INDICATED BY #. THE LINKS ASSOCIATED WITH LABELS 17 & 21 ARE FOR THE FIRST TRANSFORMER. THE LINKS ASSOCIATED WITH LABELS 18 & 22 ARE FOR THE SECOND TRANSFORMER. THE LINKS ASSOCIATED WITH LABELS 19 & 23 ARE FOR THE THIRD TRANSFORMER.

REFERENCE DRAWINGS	
CITY BASEMENT SUBSTATIONS WITH E TYPE LV BOARD CABLING	A0-178233
CITY UPPER LEVEL SUBSTATIONS WITH E TYPE LV BOARD CABLING	A0-178234
CITY SUBSTATIONS WITH E TYPE LV BOARD CABLE SCHEDULES	B1-178235
CITY SUBSTATIONS WITH E TYPE LV BOARD AC/DC SCHEMATICS	A0-178236
DISTRIBUTION SUBSTATIONS - MOULDED LINK & LABEL DETAILS	B1-178241
DISTRIBUTION SUBSTATIONS - PROTECTION RELAYS DRILLING DETAILS	A2-191086
CITY DISTRIBUTION SUBSTATIONS WITH E TYPE LV BOARD FREE STANDING PROTECTION CABINET TRANSFORMER/TRANSFORMER WIRING	A0-205954
CITY DISTRIBUTION SUBSTATIONS WITH E TYPE LV BOARD FREE STANDING PROTECTION CABINET TRANSFORMER/SUMMATED OC WIRING	B1-205955

CAD DRAWING
DO NOT MANUALLY AMEND
A M E N D M E N T S
1 NEW AUSGRID BORDER & LOGO
ADDED
R.LAALAA 02-10-2013
APPROVED
T.LAMPARD



SCALE	1:5
DESIGNED	-
DRAWN	P. JARVIS
CHECKED	P. EASTON
APPROVED	P. EASTON
DATE	7.12.09
PRJ/TRK No.	-
PROJECT NUMBER	101/60/6/3

CITY DISTRIBUTION SUBSTATIONS WITH E TYPE LV BOARD FREE STANDING PROTECTION CABINETS DRILLING DETAILS

DRAWING No **205953** SHEET 1 AMD 1 SIZE B1