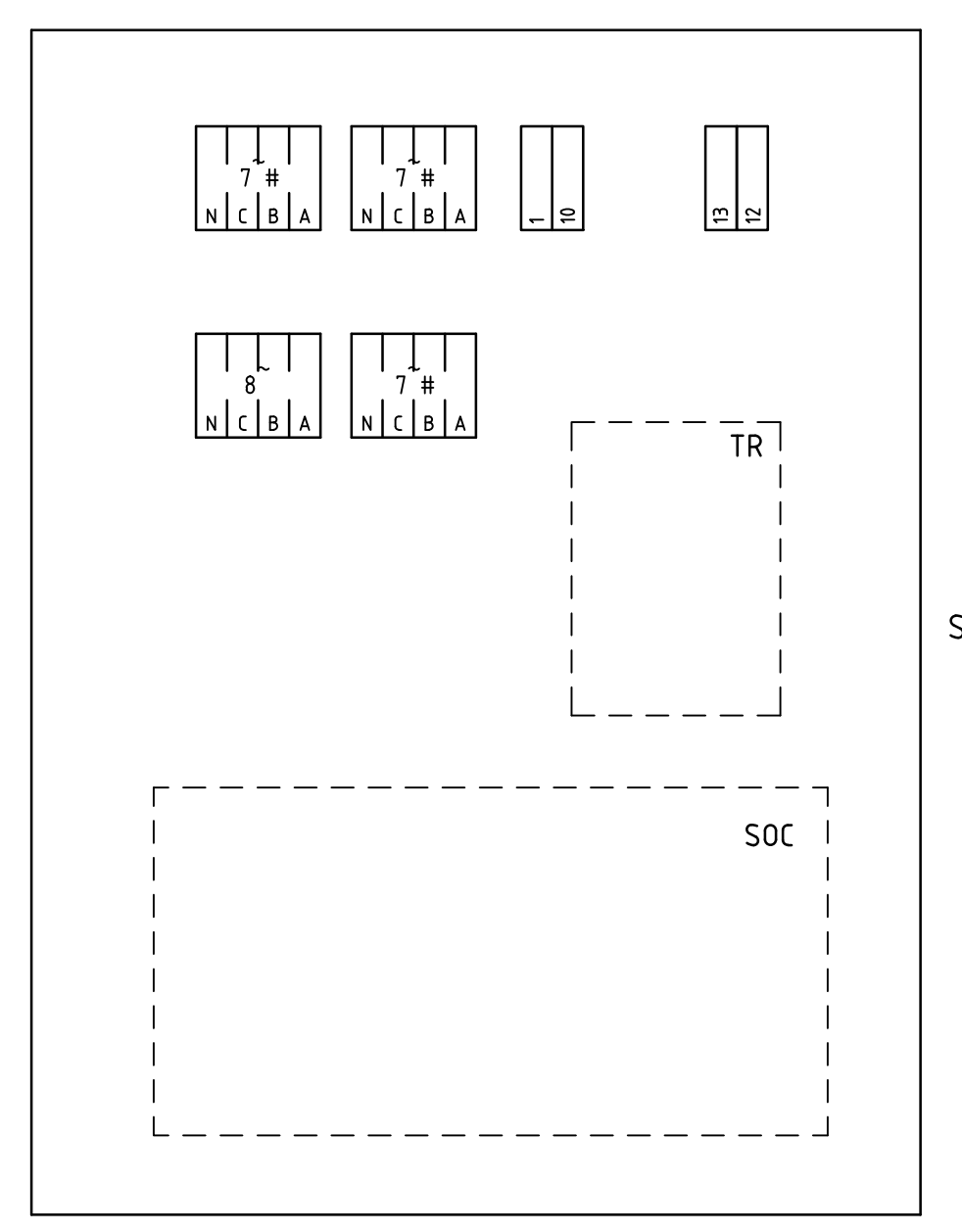
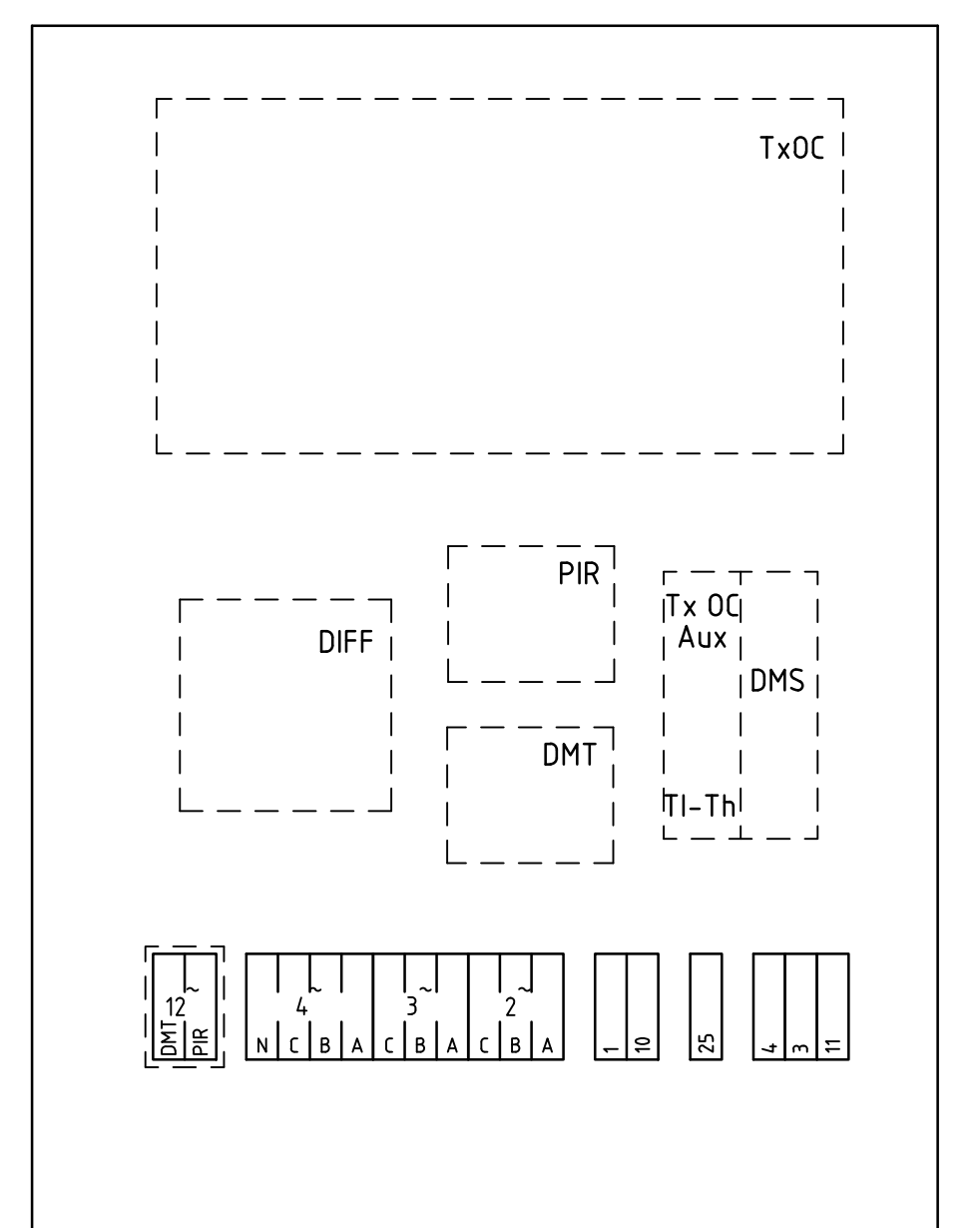
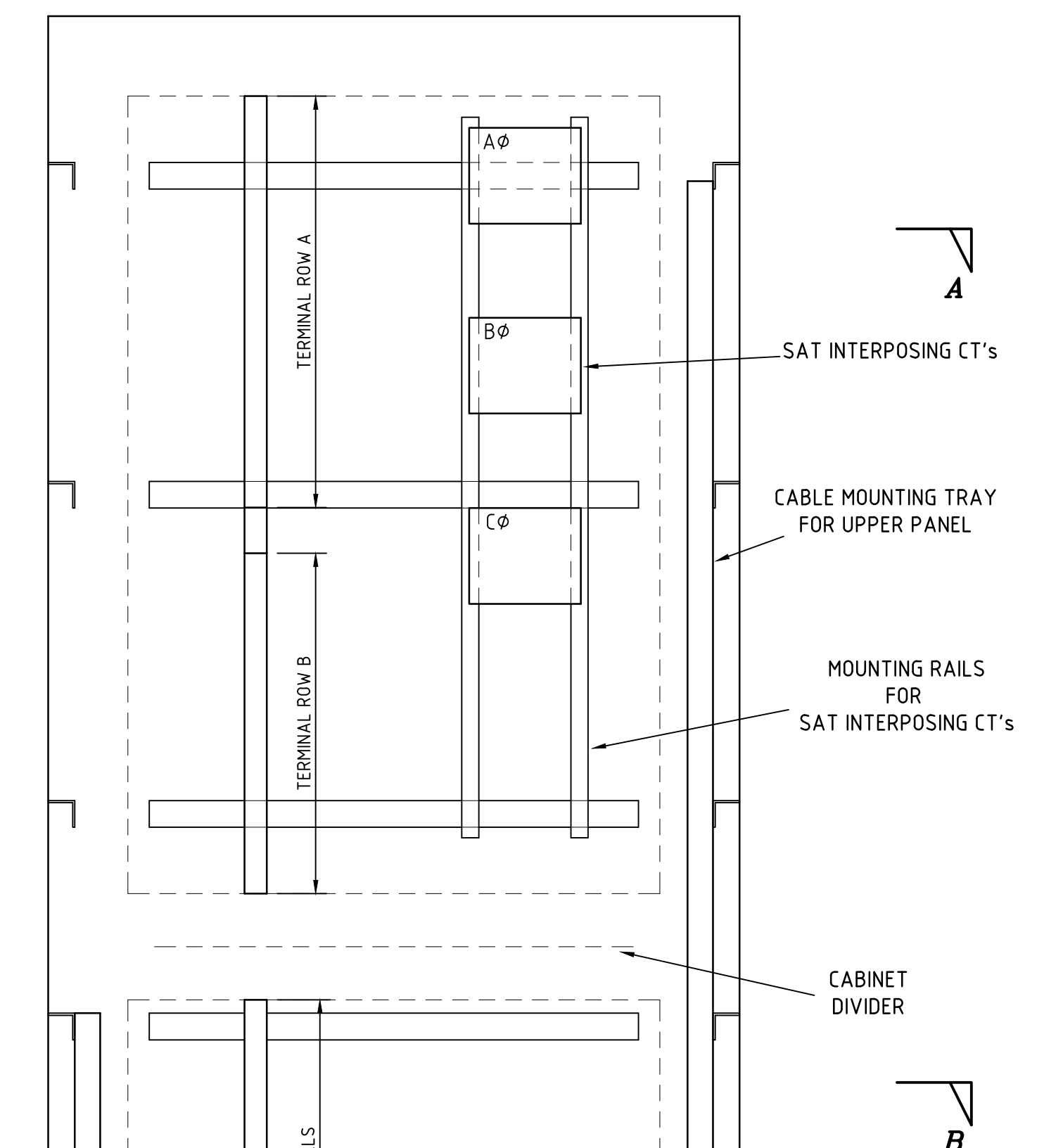
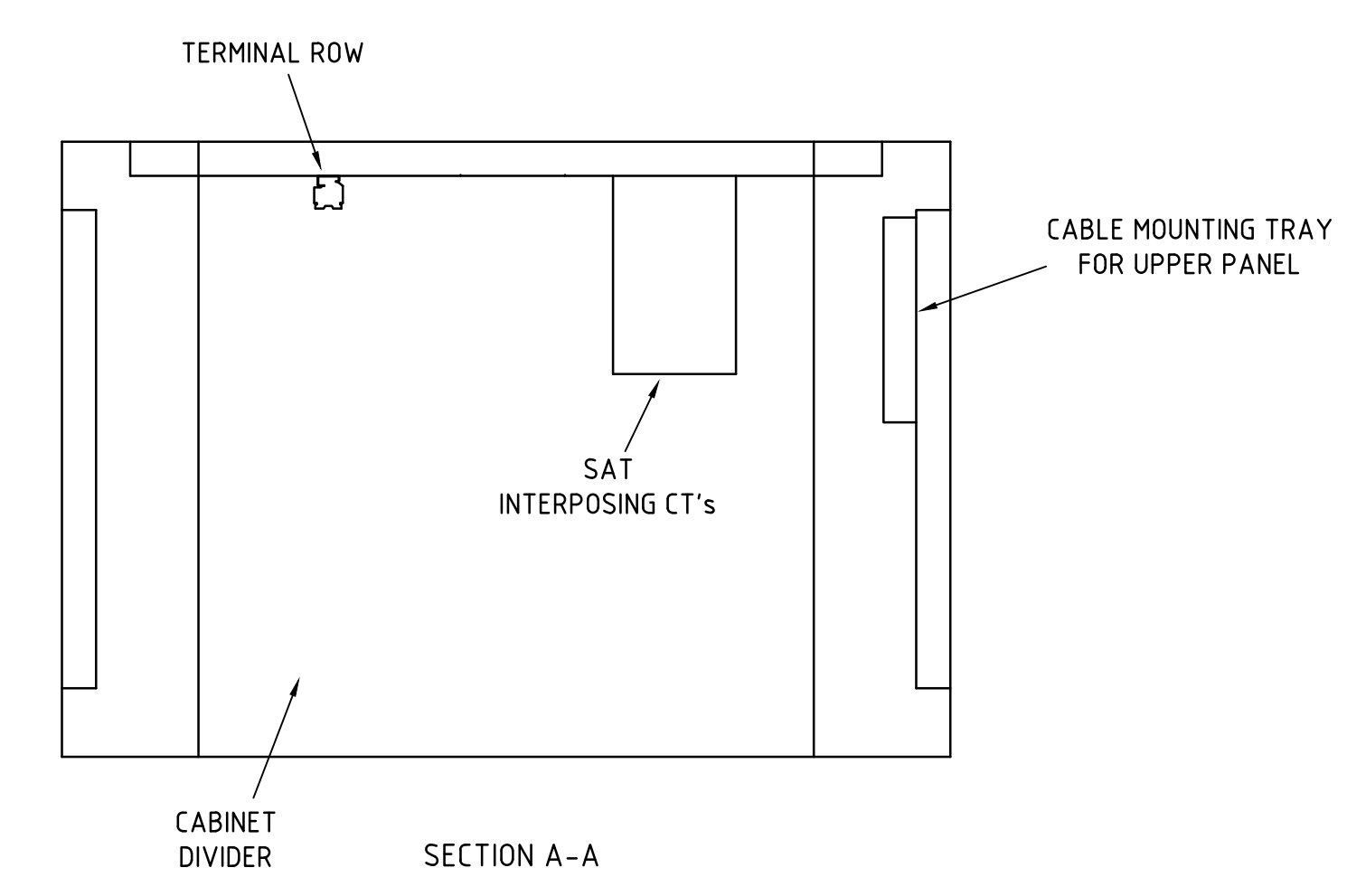
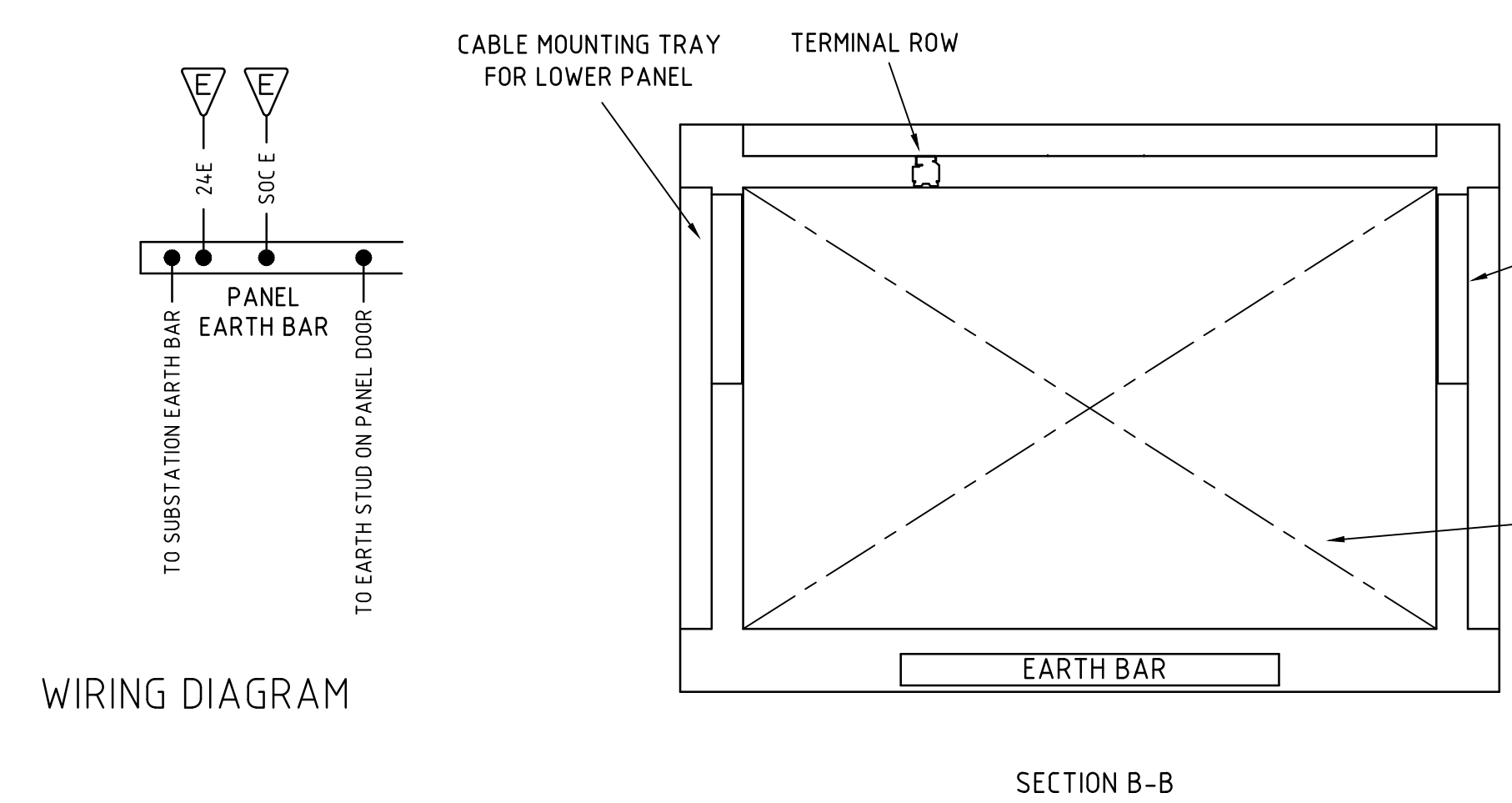
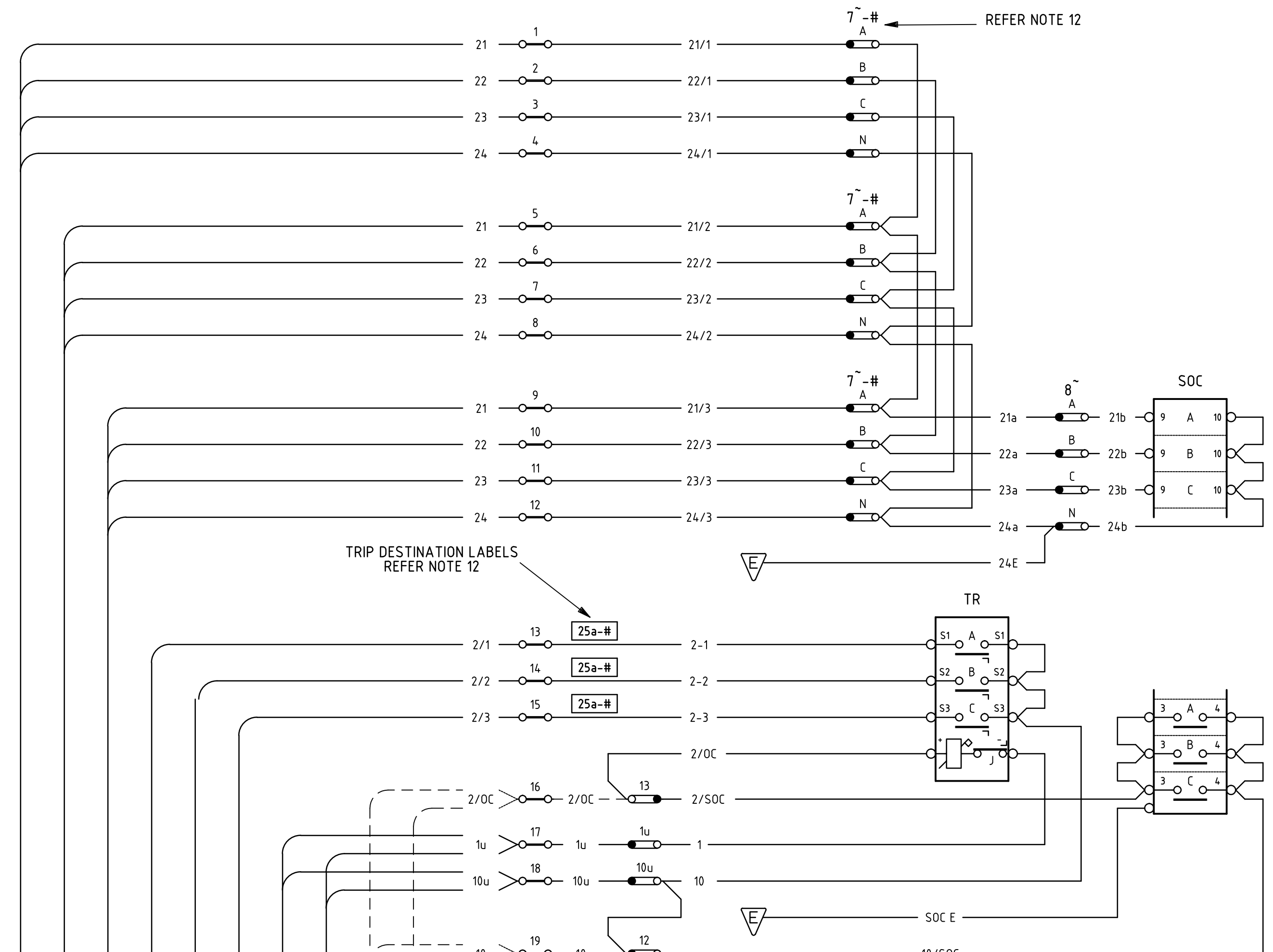


REFERENCE DRAWINGS	
CITY BASEMENT SUBSTATIONS WITH E TYPE LV BOARD CABLING	A0-178233
CITY UPPER LEVEL SUBSTATIONS WITH E TYPE LV BOARD CABLING	A0-178234
CITY SUBSTATIONS WITH E TYPE LV BOARD CABLE SCHEDULES	B1-178235
CITY SUBSTATIONS WITH E TYPE LV BOARD AC/DC SCHEMATICS	A0-178236
DISTRIBUTION SUBSTATIONS CABINET TYPE RELAY PANELS DETAILS	A0-205952
CITY SUBSTATIONS WITH E TYPE LV BOARD PROTECTION CABINETS DRILLING	B1-205953
CITY SUBSTATIONS WITH E TYPE LV BOARD TRANSFORMER PROTECTION CABINETS WIRING	A0-205954
DISTRIBUTION SUBSTATIONS - MOULDED LINK & LABEL DETAILS	B1-178241
DISTRIBUTION SUBSTATIONS - PROTECTION RELAYS DRILLING DETAILS	A2-191086
LOOM METHOD OF PANEL WIRING	A1-52474
UTILUX 3820 RAIL MOUNTED TERMINALS	A3-118547
AUXILIARY CURRENT TRANSFORMER MARK 11	A1-122034

LEGEND		
SYMBOL	DESCRIPTION	TYPE
TxOC	TRANSFORMER OVERCURRENT RELAY	CDG 33
Tx OC AUX	TRANSFORMER OVERCURRENT AUXILIARY TRIP INDICATOR	TI-2 CITY
DIFF	DIFFERENTIAL RELAY	K3M
TI-Th	THERMAL TRIP INDICATOR	TI-2 CITY
PIR	PILOT INTERLOCK RELAY	PIR
DMT	TRIP AND SIGNAL RELAY	DMT
DMS	SIGNAL AND LOCKOUT RELAY	TI-3 (0.2)
SOC	SUMMATED OVERCURRENT RELAY	CDG 33
TR	MULTI-TRIPPING RELAY	2HS522K10

CABLE CONNECTIONS	TERMINALS	D.C. LINKS	LOOPING	A.C. LINKS	MULTITRIPPING RELAY	A.C. LINKS	SUMMATED OVERCURRENT RELAY
-------------------	-----------	------------	---------	------------	---------------------	------------	----------------------------



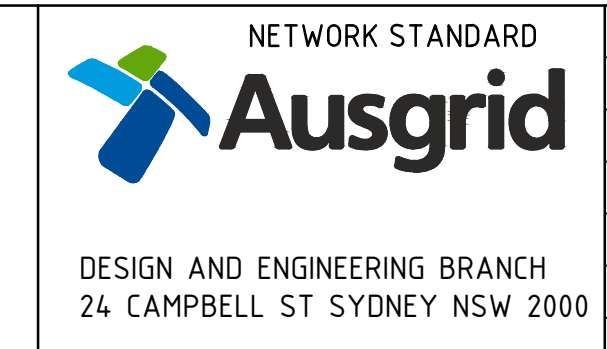
DOOR (REAR VIEW)
PANEL LAYOUT
SCALE 1:5

NOTES

- THIS DRAWING SHOWS THE WIRING FOR THE TRANSFORMER/SUMMATED OVERCURRENT FREE STANDING CITY PROTECTION CABINET TO BE USED IN CHAMBER TYPE CITY SUBSTATIONS AND IS TO BE READ IN CONJUNCTION WITH NETWORK STANDARDS AND THE SUBSTATION DESIGN INFORMATION PACKAGE.
- THE WIRING SHOWN ON THIS DRAWING IS FOR THE SUMMATED OVERCURRENT PANEL ONLY. FOR THE TRANSFORMER PROTECTION PANEL WIRING REFER TO DRAWING A0-205954.
- THIS FREE STANDING PROTECTION CABINET IS TO BE CONSTRUCTED IN ACCORDANCE WITH DRAWING A0-205952 AND DRILLED TO DRAWING B1-205953.
- THE PIR TRIP LINKS ARE TO BE FITTED WITH CLEAR PLASTIC COVERS ON BOTH THE FRONT AND REAR OF THE PANEL.
- SELF ADHESIVE CAUTION LABELS ARE TO BE FIXED TO THE FRONT AND REAR OF THE PANEL DOOR AS SHOWN. THESE LABELS ARE TO READ: 415V AC
- SUBSTITUTE THE APPROPRIATE TRANSFORMER NUMBER WHERE INDICATED BY #.
- ALL PANEL WIRING IS TO BE 7/0.67. 0.6kV V75 GRADE WITH PVC INSULATION. ALL INSULATION IS TO BE GREY COLOURED EXCEPT FOR EARTHING WIRES WHICH ARE TO BE GREEN/YELLOW.
- A DOT ON LINKS (●) INDICATES BOTTOM TERMINAL.
- EARTH CONNECTIONS DESIGNATED E ARE TO BE CONNECTED INDIVIDUALLY TO THE EARTH BAR.
- FOR LOOM METHOD OF WIRING REFER TO DRAWING A1-52474.
- THE COMMON CONNECTIONS BETWEEN POINTS DESIGNATED BY ① ② ⑩ etc ARE TO BE DETERMINED ON SITE AND SHOULD BE ACHIEVED BY THE SHORTEST POSSIBLE ROUTE. HOWEVER, IN ALL CASES NO MORE THAN TWO WIRES SHOULD BE CONNECTED TO ANY LINKS OR RELAY TERMINAL.
- THE TRANSFORMER NUMBER FOR THE RELEVANT SUBSTATION IS TO BE SUBSTITUTED WHERE # APPEARS. THE LINKS ASSOCIATED WITH LABELS 17 & 21 ARE FOR THE FIRST TRANSFORMER. THE LINKS ASSOCIATED WITH LABELS 18 & 22 ARE FOR THE SECOND TRANSFORMER. THE LINKS ASSOCIATED WITH LABELS 19 & 23 ARE FOR THE THIRD TRANSFORMER.
- WHEN A DRY TYPE TRANSFORMER IS USED, THE THERMAL RELAY TRIP INDICATOR (TI-TI) IS TO BE CONNECTED.

CAD DRAWING
DO NOT MANUALLY AMEND
A REVISIONS

1 NEW AUSGRID BORDER & LOGO
ADDED
R.L.A.L.A.A. 30-09-2013
APPROVED T.LAMPARD



SCALE	AS SHOWN
DESIGNED	-
DRAWN	P. JARVIS
CHECKED	P. EASTON
APPROVED	P. EASTON
DATE	7.12.09
PR/JTRK No.	-
PROJECT NUMBER	209/1/55/1

CITY DISTRIBUTION SUBSTATIONS
WITH E TYPE LV BOARD
FREE STANDING PROTECTION CABINET
TRANSFORMER/SUMMATED OVERCURRENT
CABINET WIRING AND CONNECTIONS

DRAWING No	205955	SHEET	1	AMD	1	SIZE	B1
------------	--------	-------	---	-----	---	------	----