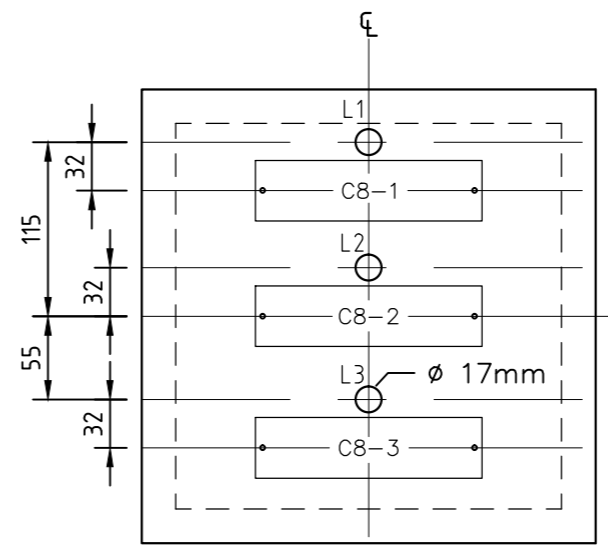
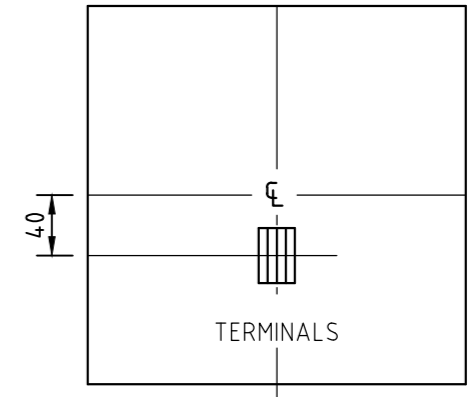


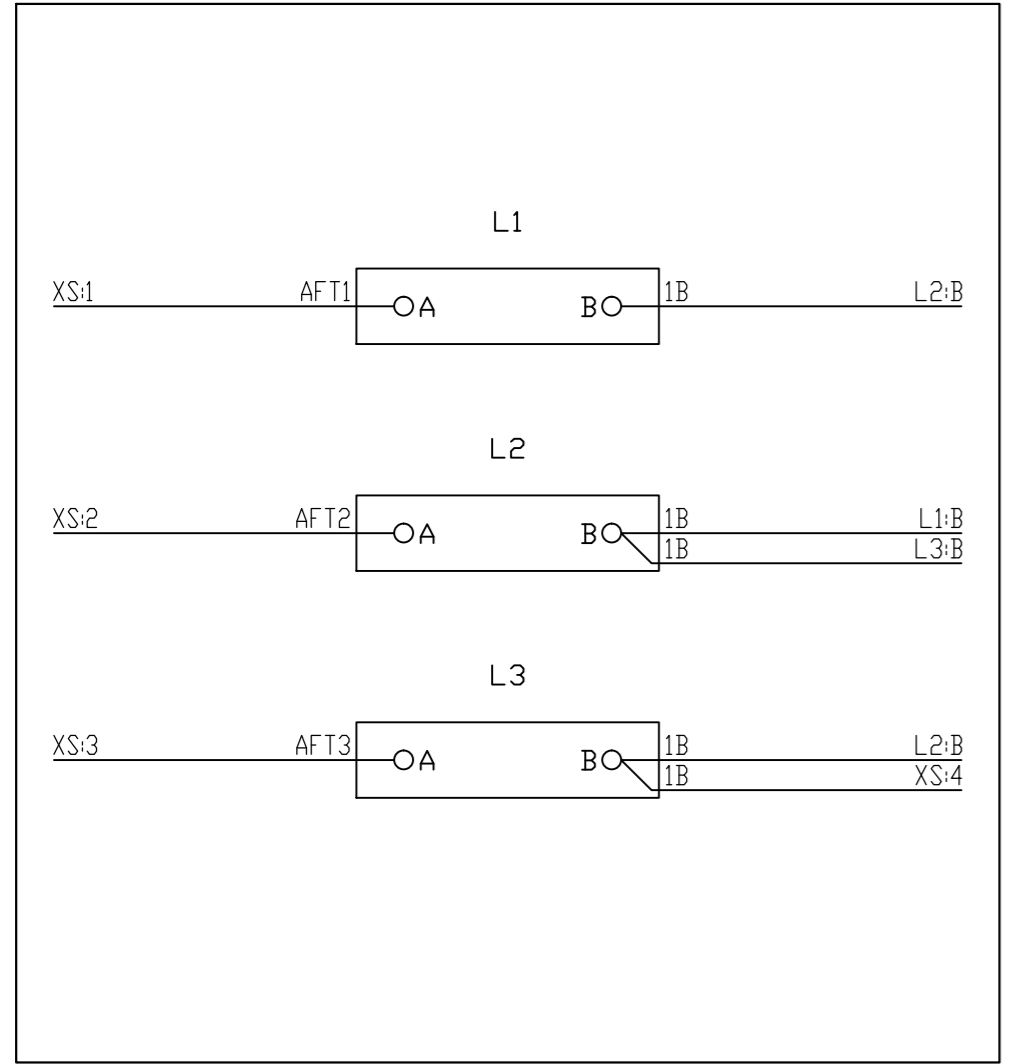
**SCHEMATIC DIAGRAM**  
ARC FLASH DETECTION INDICATION PANEL



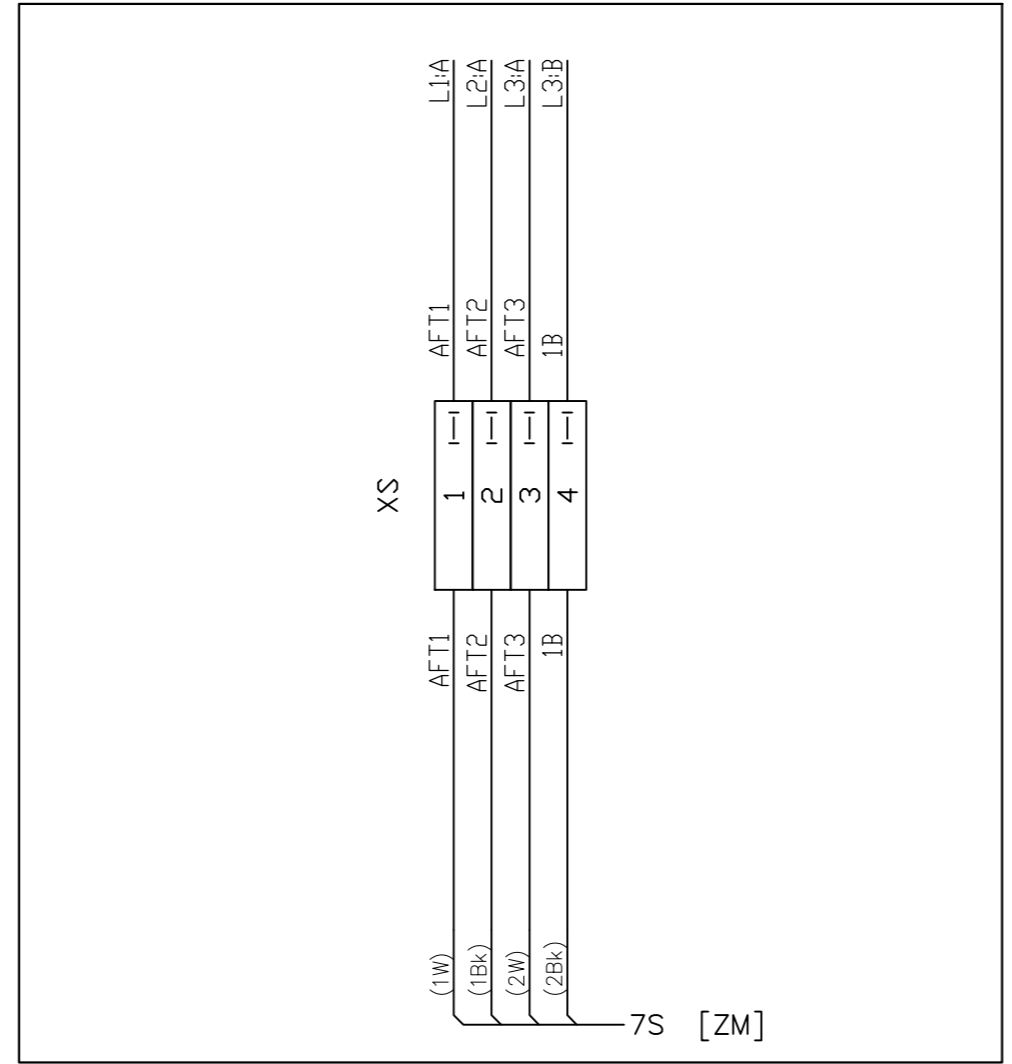
**PANEL DOOR LAYOUT**  
REAR VIEW  
SCALE 1:5



**MOUNTING PANEL LAYOUT**  
FRONT VIEW  
SCALE 1:5



**WIRING DIAGRAM**  
ARC FLASH DETECTION INDICATION PANEL  
REAR VIEW PANEL DOOR



**WIRING DIAGRAM**  
ARC FLASH DETECTION INDICATION PANEL  
FRONT VIEW PANEL MOUNTING PLATE

LABEL DETAILS						
LABEL	LABEL SIZE	COLOUR	TEXT LINE	TEXT HEIGHT	ENGRAVING	No OFF
1	C8	GRAVOPLY No.200 WHITE/BLACK	LINE 1 LINE 2 LINE 3	7 7 7	TX No.1 GREEN LIGHT INDICATES TRANSFORMER & ARC FLASH RELAY 'B' IS HEALTHY	1
2	C8	GRAVOPLY No.200 WHITE/BLACK	LINE 1 LINE 2 LINE 3	7 7 7	TX No.2 GREEN LIGHT INDICATES TRANSFORMER & ARC FLASH RELAY 'B' IS HEALTHY	1
3	C8	GRAVOPLY No.200 WHITE/BLACK	LINE 1 LINE 2 LINE 3	7 7 7	TX No.3 GREEN LIGHT INDICATES TRANSFORMER & ARC FLASH RELAY 'B' IS HEALTHY	1
SEE NOTE 4.	C8	GRAVOPLY No.200 WHITE/BLACK	LINE 1	8	NOT IN SERVICE	-

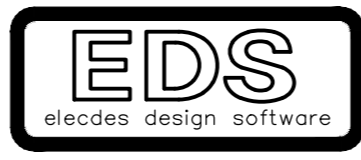
**NOTES:**

- ALL PANEL WIRING IS TO BE 7/0.30, 0.6kV V75 GRADE WITH PVC INSULATION. ALL INSULATION IS TO BE GREY COLOURED.
- ALL DIMENSIONS ARE IN MILLIMETRES.
- DRILLING ARRANGEMENT SUITS A B&R UNIVERSAL N103031 ENCLOSURE.
- SHOWN IS THE CONFIGURATION FOR A 3 TRANSFORMER SUBSTATION.  
FOR 1 TRANSFORMER SUBSTATIONS REPLACE LABELS 2 AND 3 WITH LABEL 4.  
FOR 2 TRANSFORMER SUBSTATIONS REPLACE LABELS 3 WITH LABEL 4.

TAGNAME	MFG	CATNO	DESC	REF_DWG
INDICATION BOX	B&R	N103031	UNIVERSAL ENCLOSURE	-
L1 TO L3	RAFI	1.60.502.002/1502	LAMP HOLDER WITH GREEN LENS	-
	MARL	211-997-48-38	WHITE 60V DC EDISON SCREW MULTI-LEDS	-
XS	WEIDMULLER	SAKR	RAIL MOUNTED ISOLATING TERM CAT No.41226	-

**LEGEND**

CAD DRAWING  
DO NOT MANUALLY AMEND  
AMENDMENTS  
1. REF E2 - E3  
CHANGED LED PART No. & VOLTAGE. WAS 211-977-24-38 48V DC, NOW 211-977-48-38 60V DC.  
L.MARTINUZZI 20/05/2013  
CHECKED: L.MARTINUZZI  
APPROVED: MIBENNETT



NETWORK STANDARD  
DESIGN AND ENGINEERING BRANCH  
570 GEORGE ST SYDNEY, NSW 2000  
P: 9272 3805  
F: 9272 6269

SCALE	AS SHOWN
DESIGNED	-
DRAWN	L.MARTINUZZI
CHECKED	B.HAINES
APPROVED	A.TURNER
DATE	31/05/2012
PROJECT NUMBER	SM 6717-1-2
PROJTRAK NUMBER	-

RMICB SUBSTATIONS WITH E TYPE LV BOARD OPTICAL ARC FLASH DETECTION INDICATION PANEL SCHEMATIC, DRILLING AND WIRING DIAGRAM			
SIZE	DRAWING No	SHEET	AMD
A2	227354	1	1