

AC TEST LINK LABEL ENGRAVING DETAILS

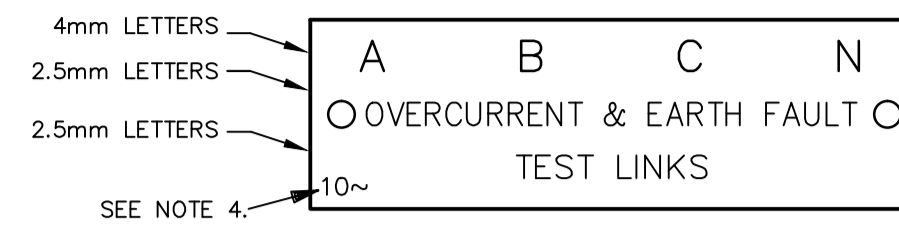
T/LINK No.	LABEL SIZE	MATERIAL/COLOUR	TEXT LINE	TEXT HEIGHT	ENGRAVING	No OFF	REF
1~	C1	GRAVOPLY No.259 PINE GREEN/WHITE	LINE 1 LINE 2 LINE 3	4.0 2.5 2.5	A B C N TRANSLAY RELAY TEST LINKS	1	B1-121506 & B1-050996 REFER TO DRAWING AO-064825. AND FOR TYPICAL LABEL ENGRAVING DETAILS REFER TO DRAWING AO-064825.
2~	C10		LINE 1 LINE 2 LINE 3 LINE 4	4.0 2.5 2.5 2.5	A B C TRANSFORMER OVERCURRENT RELAY TEST LINKS	1	
3~	C10		LINE 1 LINE 2 LINE 3 LINE 4	4.0 2.5 2.5 2.5	A B C TRANSFORMER OVERCURRENT RELAY DELTA TEST LINKS	1	
4~	C1		LINE 1 LINE 2 LINE 3	4.0 2.5 2.5	A B C N DIFFERENTIAL RELAY TEST LINKS	1	
5~	C1		LINE 1 LINE 2 LINE 3 LINE 4	4.0 2.5 2.5 2.5	A B C N FEEDER OVERCURRENT RELAY TEST LINKS	1	
6~	C1		LINE 1 LINE 2 LINE 3 LINE 4	4.0 2.5 2.5 2.5	A B C N CUSTOMER OVERCURRENT RELAY TEST LINKS	1	
7~	C1		LINE 1 LINE 2 LINE 3 LINE 4	4.0 2.5 2.5 2.5	A B C N TRANSFORMER # SUMMATED OVERCURRENT SUMMATION LINKS	1	
8~	C1		LINE 1 LINE 2 LINE 3 LINE 4	4.0 2.5 2.5 2.5	A B C N TRANSFORMER SUMMATED OVERCURRENT RELAY TEST LINKS	1	
9~	C9		LINE 1 LINE 2	2.5 2.5	LOAD RELIEF TEST LINKS	1	
10~	C10		LINE 1 LINE 2 LINE 3 LINE 4	4.0 2.5 2.5 2.5	A B C DIRECTIONAL OVERCURRENT RELAY TEST LINKS	1	
11~	C1		LINE 1 LINE 2 LINE 3 LINE 4	4.0 2.5 2.5 2.5	A B C N BACKUP OVERCURRENT RELAY TEST LINKS	1	
12~	SPECIAL TEST LINKS - AS DETAILED ON PROTECTION SCHEMATICS - COLOUR, INSCRIPTION & SIZE TO BE ADVISED						

SUBSTITUTE TRANSFORMER NUMBER WHERE # APPEARS

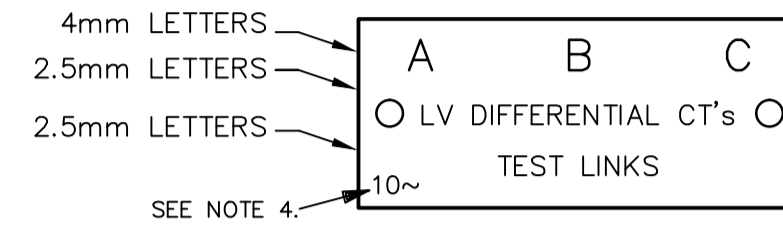
DC LINK LABEL ENGRAVING DETAILS

LINK No.	LABEL SIZE	MATERIAL/COLOUR	TEXT LINE	TEXT HEIGHT	ENGRAVING	No OFF	REF
1	C2	TRAFFOLYTE WHITE/BLACK/WHITE	LINE 1 LINE 2	2.5 2.5	BUCHHOLZ BATTERY LINK	1	FOR LABEL CONSTRUCTION AND DRILLING DETAILS REFER DRAWINGS B1-050996 AND B1-121506. AND FOR TYPICAL LABEL ENGRAVING DETAILS REFER TO DRAWING AO-064825.
2	C2		LINE 1 LINE 2	2.5 2.5	TRANSLAY BATTERY LINK	1	
3	C2		LINE 1 LINE 2	2.5 2.5	TRANSFORMER OVERCURRENT BATTERY LINK	1	
4	C2		LINE 1 LINE 2	2.5 2.5	DIFFERENTIAL BATTERY LINK	1	
5	C2		LINE 1 LINE 2	2.5 2.5	FEEDER OVERCURRENT BATTERY LINK	1	
6	C2	TRAFFOLYTE YELLOW/BLACK/YELLOW	LINE 1 LINE 2	2.5 2.5	INTERTRIP TRIP LINK	1	
7	C2	TRAFFOLYTE WHITE/BLACK/WHITE	LINE 1 LINE 2	2.5 2.5	TRANSLAY PILOT LINK	1	
8	C2	TRAFFOLYTE WHITE/BLACK/WHITE	LINE 1 LINE 2	2.5 2.5	INTERTRIP PILOT LINK	1	
9	C2	TRAFFOLYTE YELLOW/BLACK/YELLOW	LINE 1 LINE 2	2.5 2.5	PARALLEL TRIP COIL LINK	1	
10	C2	TRAFFOLYTE WHITE/BLACK/WHITE	LINE 1 LINE 2	2.5 2.5	LOW PRESSURE BATTERY LINK	1	
11	C2		LINE 1 LINE 2	2.5 2.5	THERMAL RELAY BATTERY LINK	1	
12	C2	TRAFFOLYTE WHITE/BLACK/WHITE	LINE 1 LINE 2 LINE 3	2.5 2.5 2.5	SUMMATED TRANSFORMER OVERCURRENT BATTERY LINK	1	
13	C2	TRAFFOLYTE YELLOW/BLACK/YELLOW	LINE 1 LINE 2 LINE 3	2.5 2.5 2.5	SUMMATED TRANSFORMER OVERCURRENT TRIP LINK	1	
14	C2	TRAFFOLYTE WHITE/BLACK/WHITE	LINE 1 LINE 2	2.5 2.5	CUSTOMER OVERCURRENT BATTERY LINK	1	
15	C2	TRAFFOLYTE YELLOW/BLACK/YELLOW	LINE 1 LINE 2	2.5 2.5	CUSTOMER OVERCURRENT TRIP LINK	1	
16	C2	TRAFFOLYTE WHITE/BLACK/WHITE	LINE 1 LINE 2	2.5 2.5	AUTOCLOSING INITIATION LINK	1	
17	C2		LINE 1 LINE 2	2.5 2.5	AUTOCLOSING LINK	1	
18	C2		LINE 1 LINE 2	2.5 2.5	DIRECTIONAL OVERCURRENT BATTERY LINK	1	
19	C2	TRAFFOLYTE WHITE/BLACK/WHITE	LINE 1 LINE 2 LINE 3	2.5 2.5 2.5	DIRECTIONAL OVERCURRENT AUXILIARY BATTERY LINK	1	
20	C2	TRAFFOLYTE YELLOW/BLACK/YELLOW	LINE 1 LINE 2	2.5 2.5	LOAD RELIEF BATTERY LINK	1	
21	C2		LINE 1 LINE 2	2.5 2.5	LOAD RELIEF TRIP LINK	1	
22	C2	TRAFFOLYTE YELLOW/BLACK/YELLOW	LINE 1 LINE 2	2.5 2.5	MULTITRIPPING RELAY TRIP LINK	1	
23	C2	TRAFFOLYTE WHITE/BLACK/WHITE	LINE 1 LINE 2	2.5 2.5	BACKUP OVERCURRENT BATTERY LINK	1	
24	C2	TRAFFOLYTE WHITE/BLACK/WHITE	LINE 1 LINE 2	2.5 2.5	BACKUP OVERCURRENT TRIP LINK	1	
25	C2	TRAFFOLYTE YELLOW/BLACK/YELLOW	LINE 1 LINE 2 LINE 3	2.5 2.5 2.5	CUSTOMER & SUMMATED TRANSFORMER OVERCURRENT TRIP LINK	1	
25a	C2	TRAFFOLYTE WHITE/BLACK/WHITE	LINE 1 LINE 2 LINE 3	2.5 2.5 2.5	TRIP TO TRANSFORMER# TRIP LINK LOCATED ON TRANSFORMER# PANEL	1	
26	C2		LINE 1 LINE 2	2.5 2.5	MULTITRIPPING RELAY BATTERY LINK	1	
27	SPECIAL LINK - AS DETAILED ON INDIVIDUAL PROTECTION PANEL - SIZE & COLOUR TO BE ADVISED						
28	C2	TRAFFOLYTE WHITE/BLACK/WHITE	LINE 1 LINE 2	2.5 2.5	AUTOCLOSING INTERTRIP PILOT LINK	1	
DC SUPPLY BUS LINKS	C3	TRAFFOLYTE RED/WHITE/RED	LINE 1 LINE 2 LINE 3 LINE 4	4.0 3.5 3.5 2.5	10 20V DC BUS MASTER BATTERY LINKS	1	DC VOLTAGE TO BE VERIFIED
DC SUPPLY BUS LINKS	C4	TRAFFOLYTE RED/WHITE/RED	LINE 1 LINE 2 LINE 3 LINE 4	4.0 2.5 2.5 2.5	10 20V DC BUS MASTER BATTERY LINKS	1	
PANEL LABEL	C8	TRAFFOLYTE WHITE/BLACK/WHITE	LINE 1 LINE 2	8.0 8.0	TRANSFORMER No. 1 PROTECTION PANEL.	AS REQUIRED	

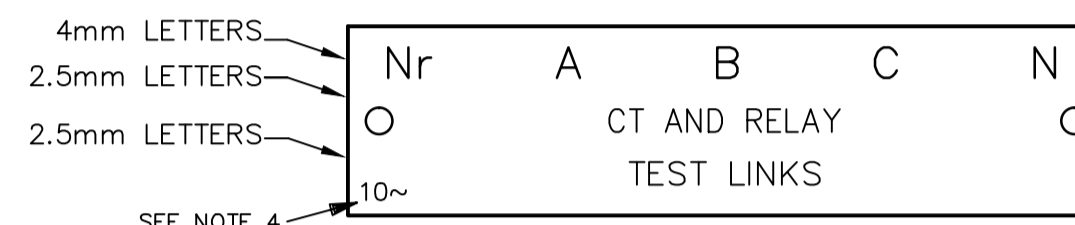
TYPICAL LABEL DETAILS:



LABEL TYPE C1-AC TEST LINKS.



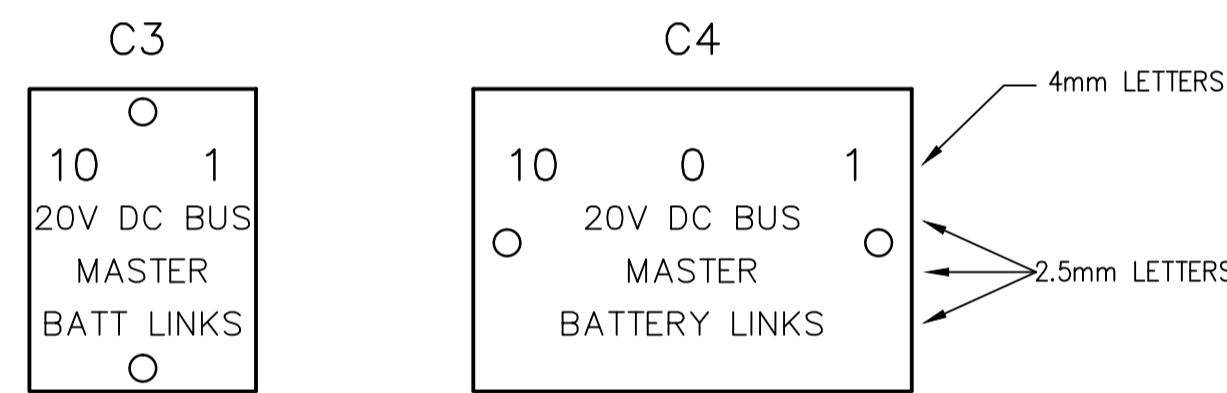
LABEL TYPE C10-AC TEST LINKS.



LABEL TYPE C11 - AC TEST LINKS.



EQUIPMENT LABELS - TYPE C7.



LABELS TYPES C3 AND C4-MASTER DC LINKS.
(BATTERY VOLTAGE TO BE VERIFIED.)

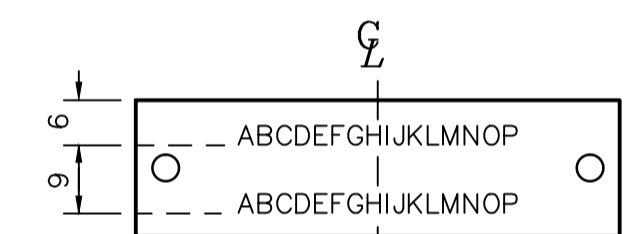
NOTES:

- UNLESS SPECIFIED, ALL LETTERING TO BE CONDENSED UPPERCASE AND TEXT TO BE POSITIONED ABOUT VERTICAL CENTRELINES. A SPACE IS EQUIVALENT TO A LETTER.
- LABEL FIXING METHOD:
5mm x #4 SELF TAPPING PAN HEAD SCREWS.
WHITE NYLON PLASTIC RIVETS.

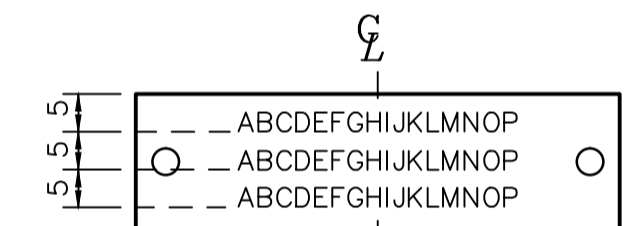
PLASTIC RIVETS AVAILABLE FROM THE FOLLOWING SUPPLIERS ;
'NPA' NYLON PRODUCTS AUSTRALASIA, 287 TARRENS RD, WEST CROYDON S.A. 5008 (PART No.9039 'HEYCO' WHITE NYLON PUSH RIVET).
'RS COMPONENTS', 6c DURDANS AVE, ROSEBERY NSW 2018 (CAT:280-925, 200/BAG).
- FOR LETTERS OF 2.0mm OR 2.5mm A MAXIMUM OF 34 LETTERS PER LINE IS POSSIBLE IF ABSOLUTELY NECESSARY, HOWEVER 25 LETTERS PER LINE IS PREFERRED.
- LABEL IDENTIFICATION NUMBERING TO BE SUITABLY POSITIONED IN THE LOWER OR UPPER LEFT HAND CORNERS OF THE LABEL AS INDICATED. WHERE THERE IS THE POSSIBILITY OF THE LABEL IDENTIFICATION TEXT INTERFERING WITH THE LABEL DESCRIPTION TEXT, THEN THE POSITIONING AND TEXT HEIGHT OF THE LABEL IDENTIFICATION NUMBERING SHOULD BE ALTERED TO FIT, (eg; 2mm TEXT HEIGHT INSTEAD OF 3mm, LEFT JUSTIFICATION INSTEAD OF CENTRE JUSTIFIED).



PANEL LABELS-TYPE C8.

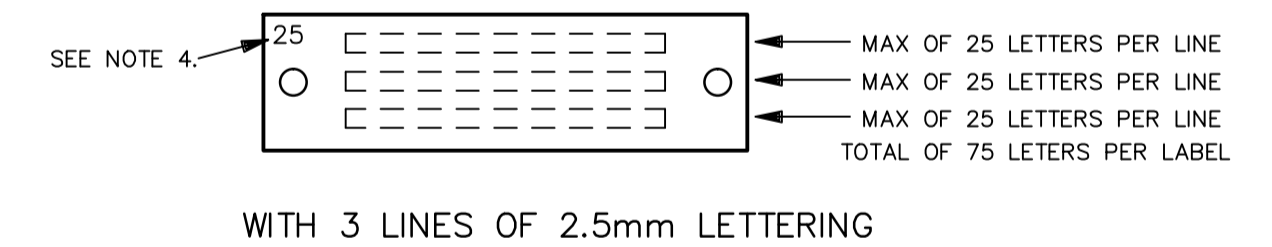


TYPE C2 LABEL WITH 2 LINES



TYPE C2 LABEL WITH 3 LINES

TYPE C2 LABELS - LINE SPACING DIMENSIONS



DC BATTERY & TRIP LINK LABELS-TYPE C2.
MAXIMUM NUMBER OF ENGRAVED LETTERS

REFERENCE DRAWINGS	
DISTRIBUTION SUBSTATION LABELS & MOULDED LINK DETAILS	B1-178241
ZONE SUBSTATIONS STANDARD NUMBERING AND LABELLING OF AC & DC LINKS	A1-114650
MOULDED TYPE LINK ASSEMBLIES - LABEL AND DRILLING DETAILS SHEET 2 OF 2	B1-121506
MOULDED TYPE LINK ASSEMBLIES - LABEL AND DRILLING DETAILS SHEET 1 OF 2	B1-050996
MOULDED TYPE LINK ASSEMBLIES LAYOUTS and DRILLING DETAILS	A2-038841
MOULDED TYPE LINK ASSEMBLY	A3-050992

CAD DRAWING
DO NOT MANUALLY AMEND
AMENDMENTS
7. DRAWING UPDATED.
CUSTOMER OVERCURRENT
WAS BUSBAR OVERCURRENT.
LABEL 25a ADDED.
LABELS 7~ & 8~ REWORKED.
LABEL 25a ADDED.
REF DWG B1-178241 ADDED.
PN 103/59/1/6
PWJ 11/7/07
CHECKED: PIE
APPROVED: OZ
8. NEW AUSGRID BORDER &
LOGO ADDED.
23-09-2013
RLALAAA
T.LAMPARD
APPROVED

Ausgrid
DESIGN SERVICES
24 CAMPBELL ST SYDNEY NSW 2000

SCALE	AS SHOWN
DESIGNED	-
DRAWN	KC
CHECKED	PWJ
APPROVED	JH
DATE	29.4.87
PRJTRK No.	-
PROJECT NUMBER	22663

**DISTRIBUTION SUBSTATION
STANDARD AC & DC MOULDED LINKS
LABEL NUMBERING AND ENGRAVING**

DRAWING No **115248** SHEET - AMD 8 SIZE A1