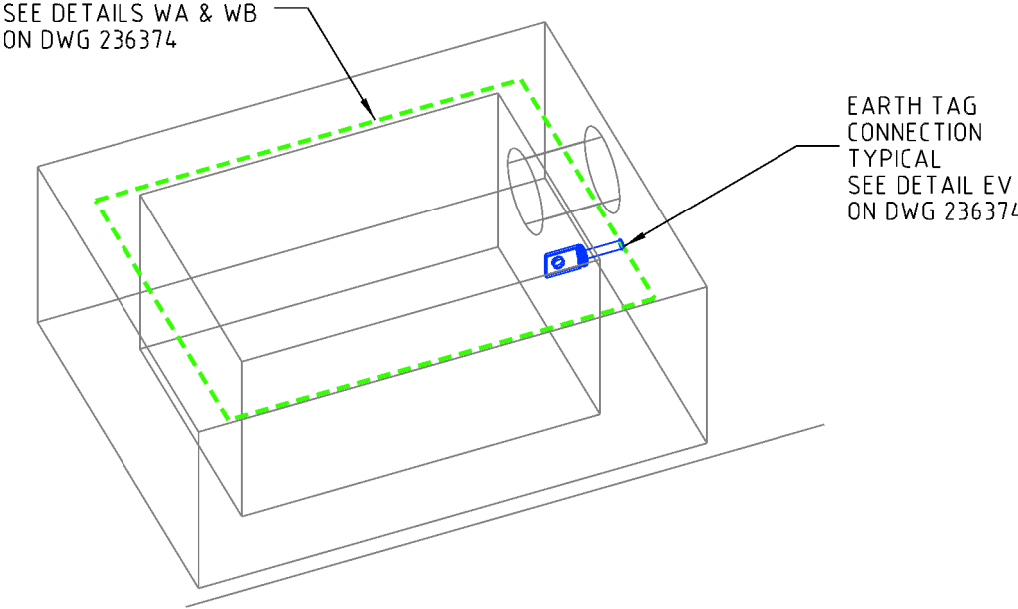


132kV JOINT BAY - EARTHING DETAIL - OVERVIEW

JOINT BAY - SLAB PLAN AND TYPICAL EMBEDDED EARTHING LAYOUT

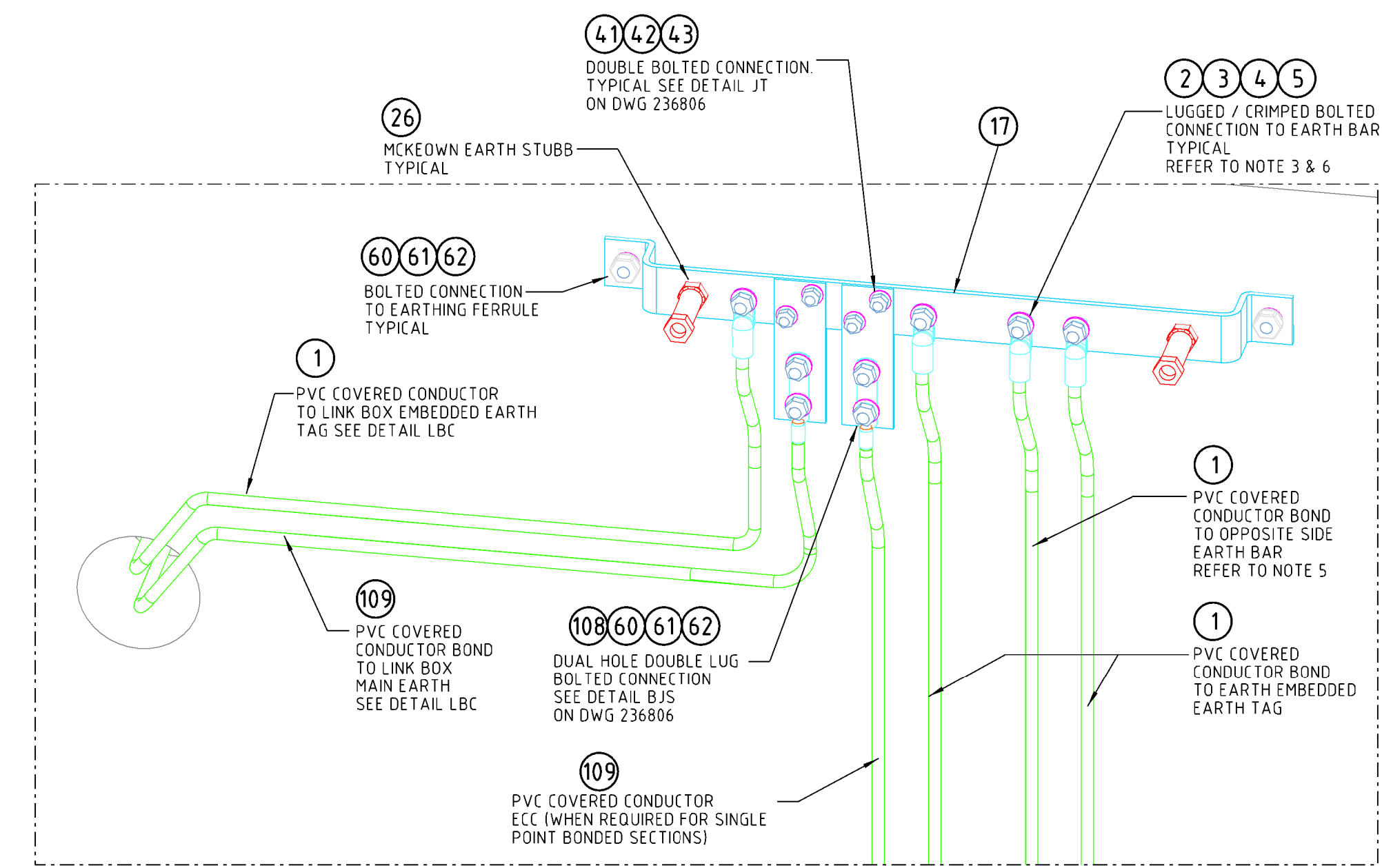


LINK BOX EMBEDDED EARTHING DETAIL (LBE)

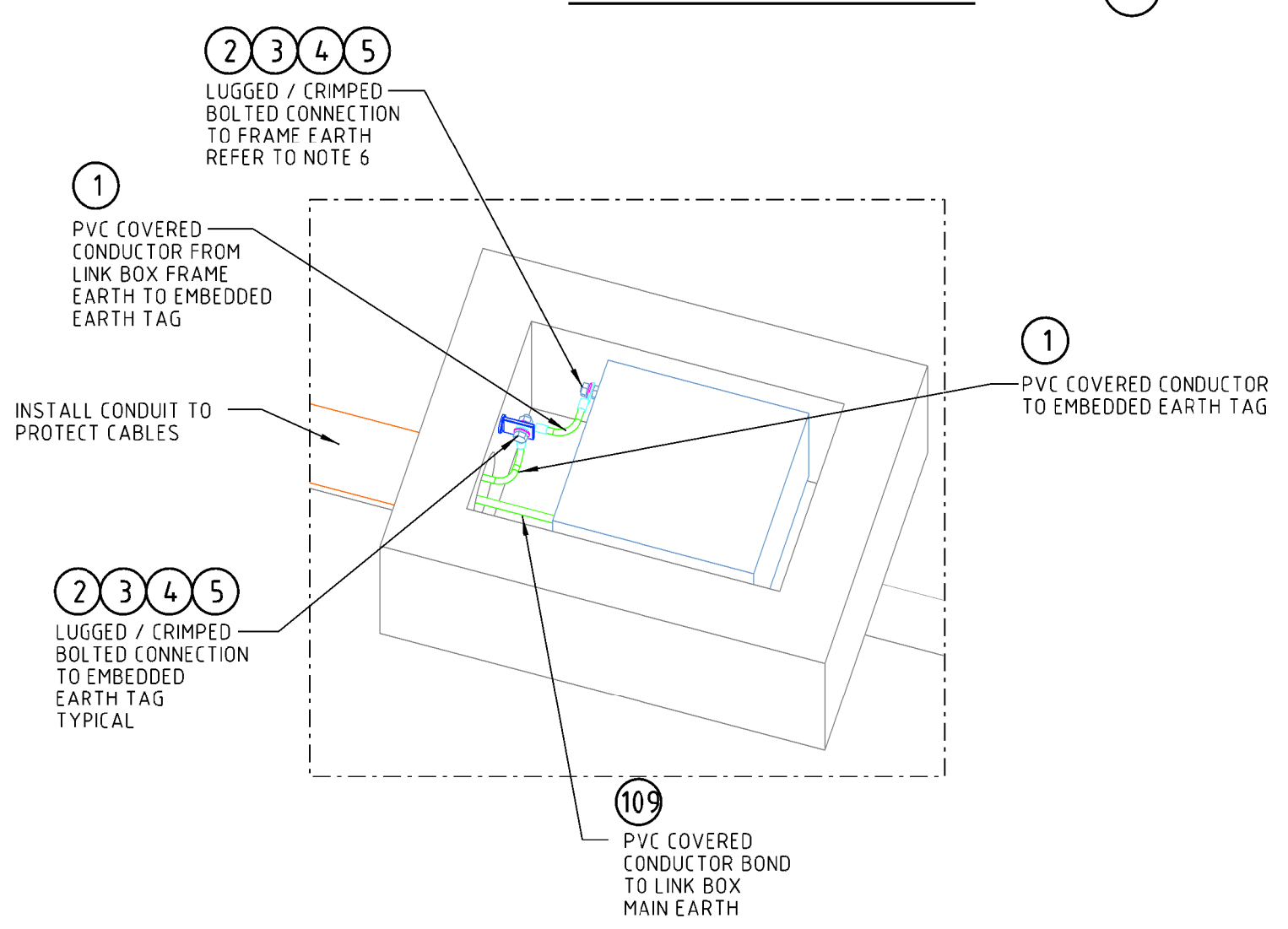
NOTES:

1. THE TOP LAYER OF CONCRETE REINFORCEMENT BARS ARE TO BE WELDED TO FORM A CONTINUOUS ELECTRICAL PATH KNOWN AS PERIMETER EARTH RING ADD EXTRA BAR TO FACILITATE THE WELDING OF PERIMETER EARTH RINGS WHERE NECESSARY.
2. FOR ALL GENERAL EARTHING DETAILS AND EMBEDDED EARTHING DETAILS REFER TO DRAWING 236374.
3. FOR ALL EARTH BAR MOUNTING AND CONNECTION DETAILS REFER TO DRAWING 236806.
4. LOCATE EARTH TAG IN FLOOR AND WALL SLABS AT NOMINAL LOCATIONS
5. EQUIPOTENTIAL BOND BETWEEN THE TWO EARTH BARS IS REQUIRED ONLY WHEN TWO SETS OF 132kV CABLES ARE JOINED IN THE PIT.
6. PRIOR TO MAKING CONNECTIONS CLEAN SURFACES AND APPLY CONDUCTIVE GREASE. BOLT ALL CONNECTIONS AND JOINTS WITH STAINLESS STEEL NUTS, BOLTS, FLAT WASHERS AND BELLEVILLE WASHERS. TEST TO CONFIRM CONTINUITY.
7. REFER TO SITE SPECIFIC EARTHING DESIGN FOR ELECTRODE DEPTH.
8. REFER TO DRAWING 217795 SHEET 2 FOR JOINT BAY EARTHING ITP

CONSTRUCTION ISSUE



EARTH BAR CONNECTIONS DETAIL (MEB)



LINK BOX CONNECTIONS DETAIL (LBC)

ITEM NO.	ITEM	DESCRIPTION	SAP CODE	MANUFACTURER	STD ORDER QTY.
109	CONDUCTOR	CONDUCTOR - 300mm ² STRANDED COPPER - BLACK PVC COVERED			
108	LUG COMPRESSION	DUAL HOLE / DOUBLE CRIMP LUG 300mm ² M16 TINNED COPPER HEX COMPRESSION			
62	FASTENERS WASHER	FASTENERS - WASHER - M16 BELLEVILLE STAINLESS STEEL GRADE 304	NOT AVAILABLE	JAMES GLEN 3544	100 Pk.
61	FASTENERS WASHER	FASTENERS - WASHER - M16 FLAT STAINLESS STEEL GRADE 316	175624	JAMES GLEN 03756306	100 Pk.
60	FASTENERS BOLT & NUT	FASTENERS - BOLT & NUT - M16 HEX STAINLESS STEEL GRADE 316 - LENGTH TO SUIT	VARIOUS	VARIOUS	N/A
43	FASTENERS WASHER	FASTENERS - WASHER - M10 BELLEVILLE STAINLESS STEEL GRADE 304	177296	JAMES GLEN 02750158	100 Pk.
42	FASTENERS WASHER	FASTENERS - WASHER - M10 FLAT STAINLESS STEEL GRADE 316	49411	JAMES GLEN 03756102	100 Pk.
41	FASTENERS BOLT & NUT	FASTENERS - BOLT & NUT - M10 HEX STAINLESS STEEL GRADE 316 - LENGTH TO SUIT	VARIOUS	VARIOUS	N/A
26	EARTH STUBB	EARTH STUBB - MC KEOWN REF DRAWING A3-520088	H108415	TAPPAT ENGINEERING	Each
17	COPPER BAR	FLAT BAR - 50 x 6.3mm - TINNED HD COPPER	41087	PRIMARY METALS & ALLOYS	4.0m
5	FASTENERS WASHER	FASTENERS - WASHER - M12 BELLEVILLE STAINLESS STEEL GRADE 304	175903	JAMES GLEN 3543	100 Pk.
4	FASTENERS WASHER	FASTENERS - WASHER - M12 FLAT STAINLESS STEEL GRADE 316	49429	JAMES GLEN 4620	100 Pk.
3	FASTENERS BOLT & NUT	FASTENERS - BOLT & NUT - M12 HEX STAINLESS STEEL GRADE 316	VARIOUS	VARIOUS	N/A
2	LUG COMPRESSION	LUG - 070mm ² M12 TINNED COPPER HEX COMPRESSION	74831	UTILUX H1423/25	25 Pk.
1	CONDUCTOR	CONDUCTOR - 070mm ² STRANDED COPPER - BLACK PVC COVERED	60111	PRYSMIAN 5014730	100m ROLL

CAD DRAWING DO NOT MANUALLY AMEND

20110901

132kV UNDERGROUND 12m XLPE/OIL CABLE JOINT BAY STRUCTURAL DETAILS 236374

ELECTRICAL EARTHING - EARTH BAR MOUNTING AND CONNECTION DETAIL 236806

145 NEWCASTLE RD WALLSEND, NSW 2287

SCALE: DESIGNED BY DEJAN MARKOVIC, DRAWN BY RAY DEAL, CHECKED BY KERRI MITCHISON, APPROVED BY MICHAEL GRIFFITHS, DATE 29/03/17

PROJECT NUMBER: STD

PROJ TRAK NUMBER: A1

ASSOCIATED DRAWINGS

132kV CAST IN SITU JOINT BAY CIVIL AND ELECTRICAL WORKS EMBEDDED AND ELECTRICAL EARTHING LAYOUT AND DETAILS

SIZE: A1, DRAWING No: 217795, SHEET: 01, AMD: 0