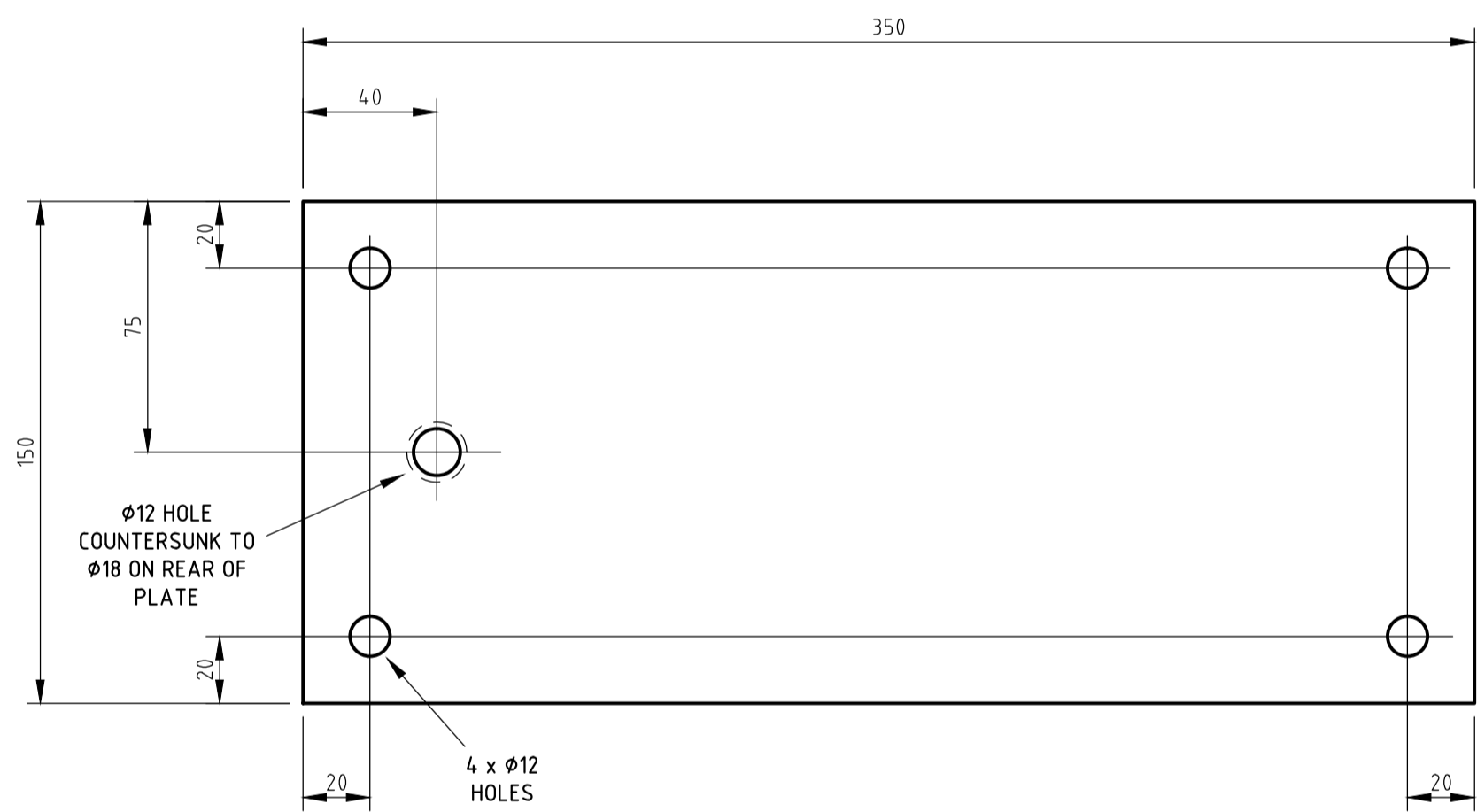
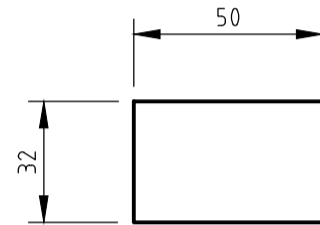
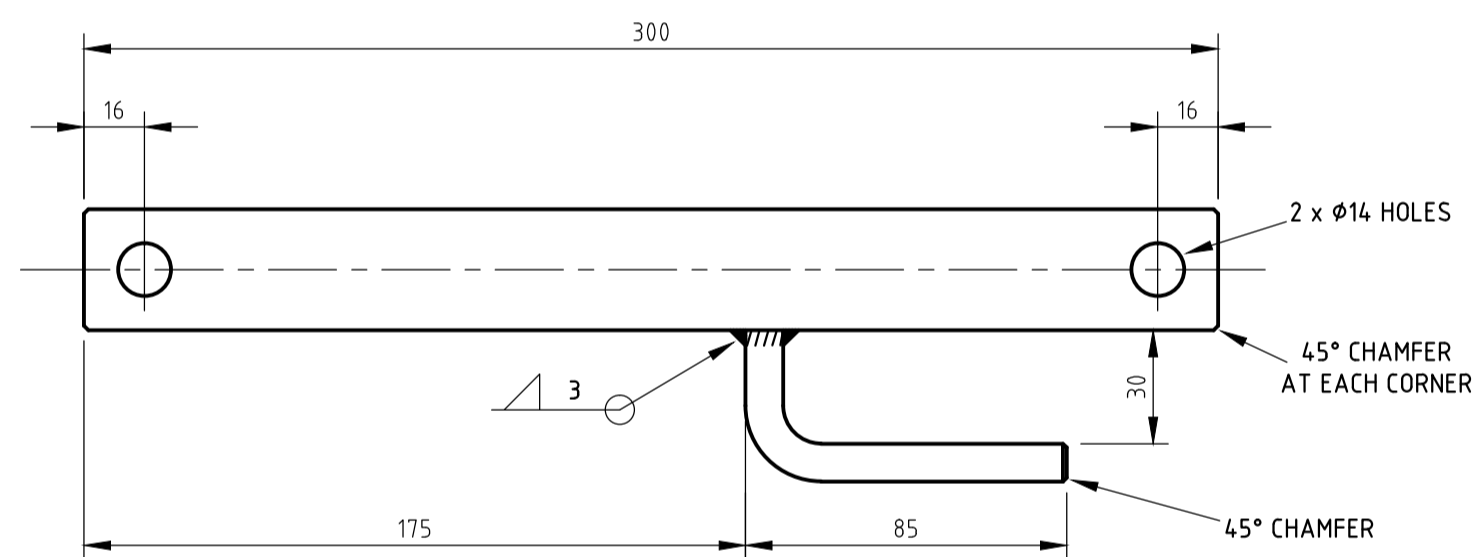


ITEM 1 - DAMPER TRIGGER RELEASE ASSEMBLY AND INSTALLATION
SCALE 1:2
(INLET DAMPER TRIGGER SHOWN REFER EXHAUST ARRANGEMENT FOR EXHAUST TRIGGER)

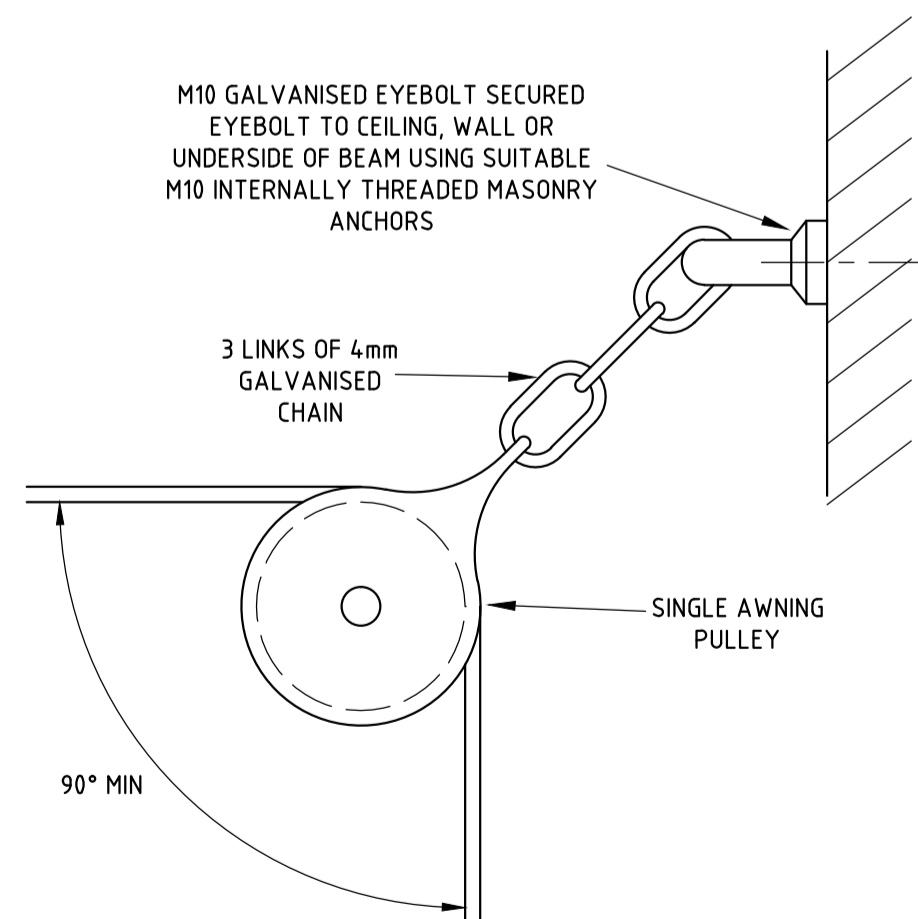
STOP BLOCK DETAILS
MATERIAL: 10mm GALVANISED MS PLATE



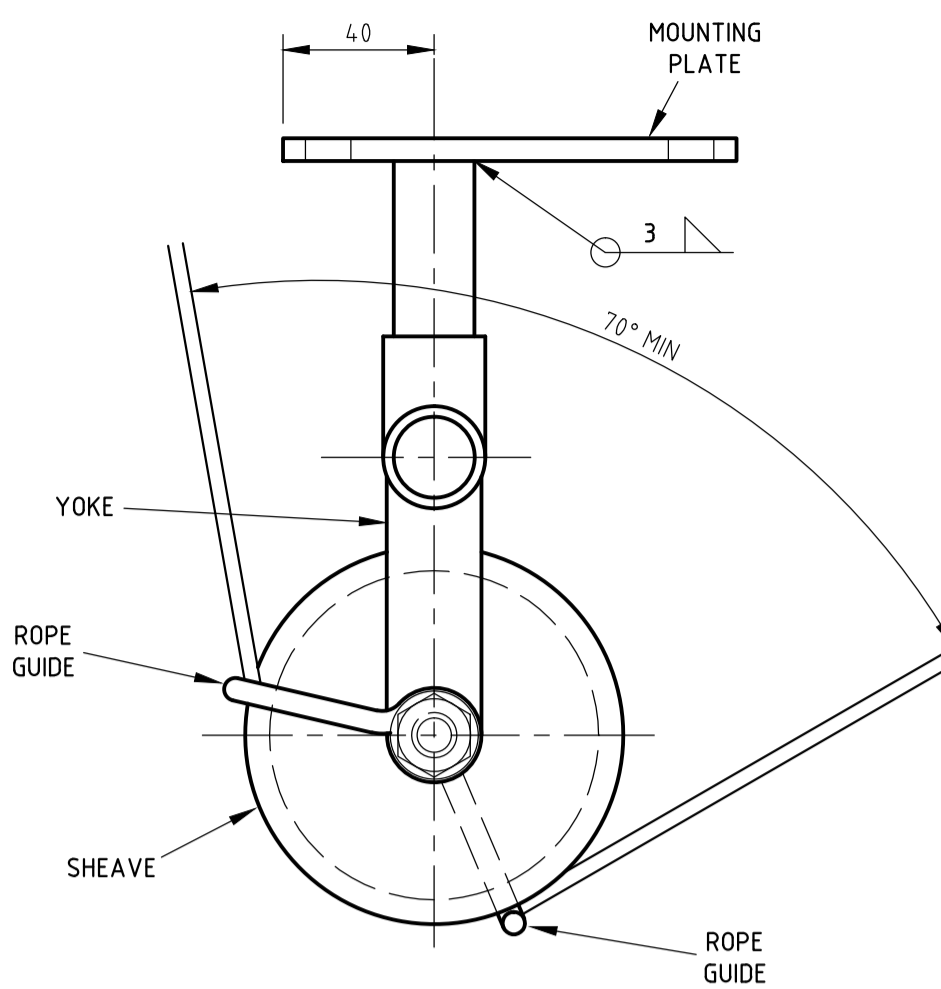
MOUNTING PLATE DETAILS
MATERIAL: 6mm THICK GALVANISED MS PLATE



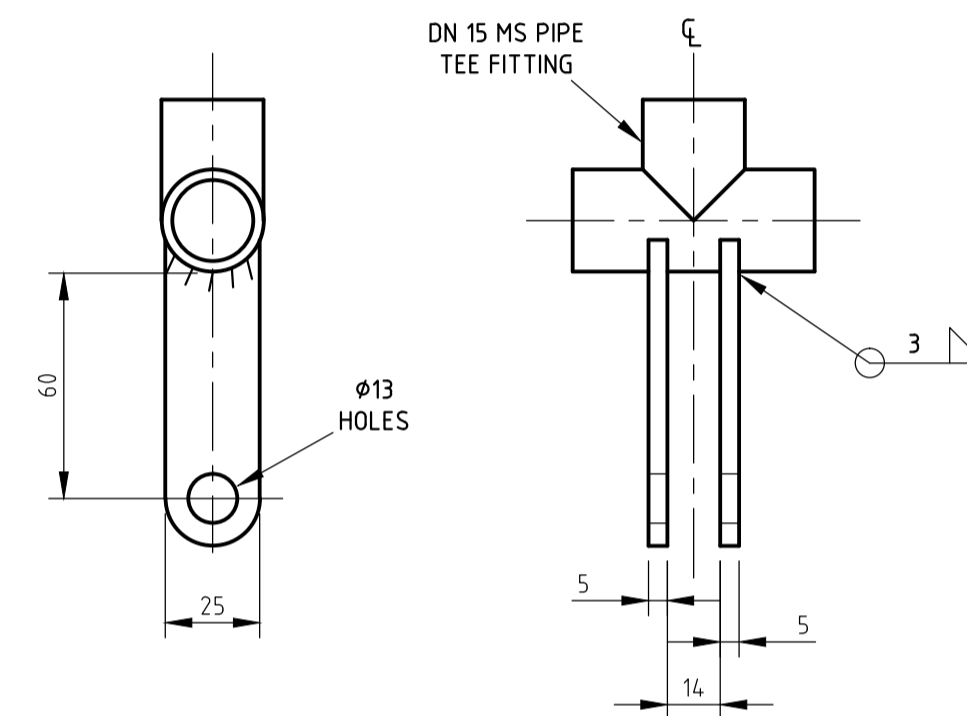
TRIGGER DETAILS
MATERIAL: 32 x 10mm THICK GALVANISED MS PLATE AND Ø10 GALVANISED MS ROD



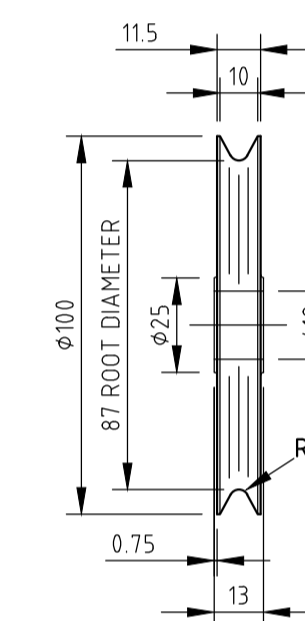
ITEM 9 - TYPICAL AWNING PULLEY
SCALE 1:2
THE CHAIN LINKS CAN BE REPLACED BY A SHORT LENGTH OF Ø4 GALVANISED FLEXIBLE STEEL WIRE ROPE 6/19 CONSTRUCTION, SECURED AT EACH END WITH 2 BULLDOG CLAMPS



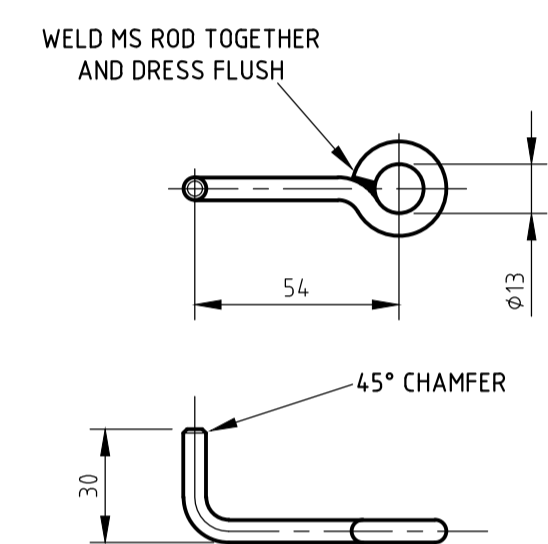
ITEM 3 - SHEAVE AND HANGER ASSEMBLY
SCALE 1:2



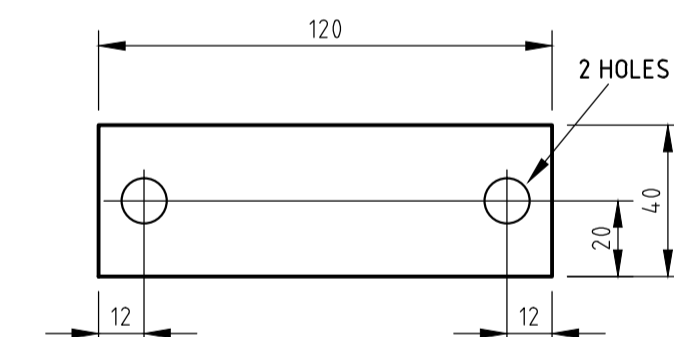
YOKE
MATERIAL: 25 x 5mm MS AND DN15 MS PIPE



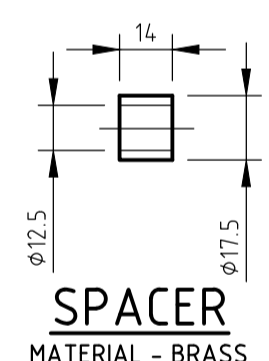
SHEAVE
MATERIAL - BRASS



ROPE GUIDE
MATERIAL - Ø6 MS ROD



MOUNTING PLATE
MATERIAL - 6mm MS



SPACER
MATERIAL - BRASS

REFERENCE DRAWING
DISTRIBUTION SUBSTATIONS BASEMENT CHAMBERS
FIRE PROTECTION CO2 PIPEWORK AND TRIPWIRE
TYPICAL ARRANGEMENT AND DETAILS
184/970

NOTES

1. THIS DRAWING IS TO BE READ IN CONJUNCTION WITH NETWORK STANDARD 113.
2. MATERIALS AND WORKMANSHIP TO BE IN ACCORDANCE WITH AS 4100.
3. WELDING TO BE IN ACCORDANCE WITH AS 1554 PART 1.
4. ALL STEEL WORK AND NUTS, BOLTS AND WASHERS ARE TO BE HOT DIP GALVANISED TO AS 1214.

CAD DRAWING
DO NOT MANUALLY AMEND
A M E N D M E N T S
4. NEW DRAWING MADE.
DRAWING RE-TITLED AND
ALTERED TO ALIGN WITH
NETWORK STANDARDS.
TYPICAL DAMPER
DRAWING 184/970 MOVED TO
DRAWING 184/970
MOUNTING PLATES FOR ITEMS
1 AND 3 ADDED.
STOP BLOCK FOR ITEM 1
ADDED.
P.JARVIS 22.9.17
CHECKED: P.TURRIN
APPROVED: D.GRCEV

CONSTRUCTION



ASSET ENGINEERING, POLICY AND STANDARDS
TRANSMISSION & DISTRIBUTION SUBSTATION ENGINEERING
570 GEORGE STREET, SYDNEY

SCALE	AS SHOWN
DESIGNED	
DRAWN	
CHECKED	
APPROVED	
DATE	
PROJECT NUMBER	
PROJTRAK NUMBER	

DISTRIBUTION SUBSTATIONS BASEMENT CHAMBERS CO2 ITEMS 1, 3 AND 9 DETAILS	
SIZE	DRAWING No
A1	117635
SHEET	AMD
1	4