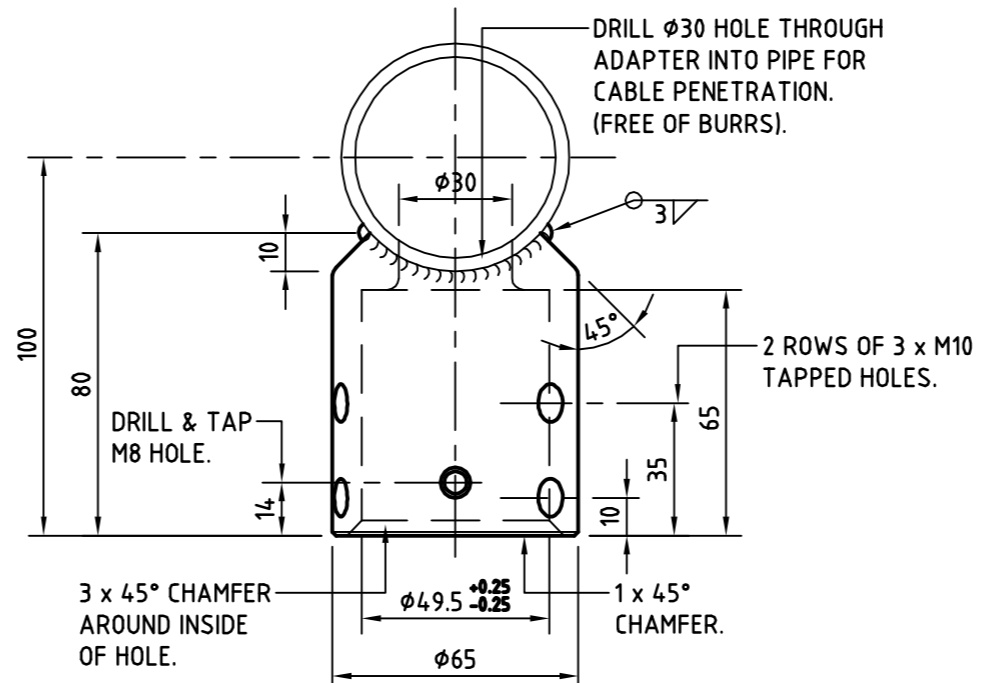
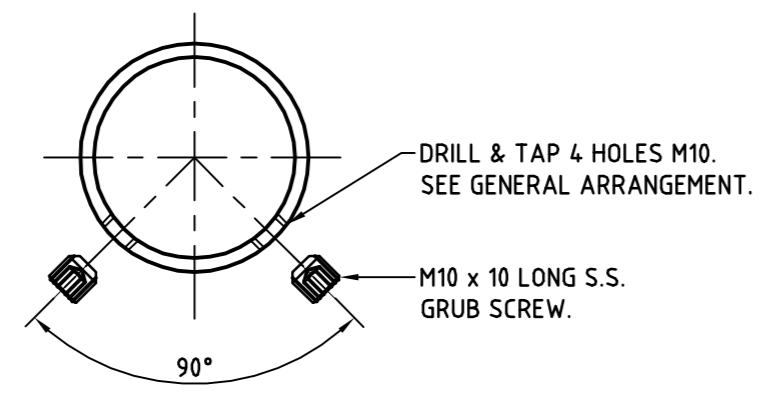


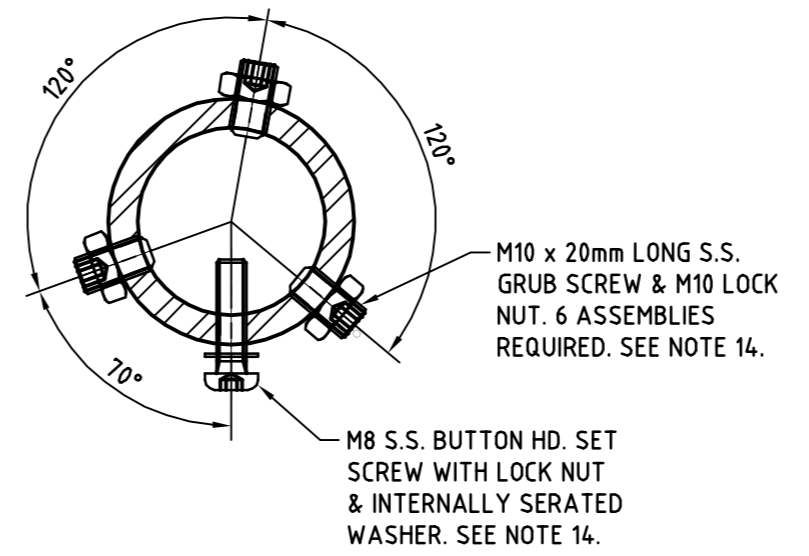
GENERAL ARRANGEMENT
SCALE 1 : 10



DETAIL 1
FRONT VIEW
SCALE 1 : 2
SEE NOTE 15.



DETAIL 2
SCALE 1 : 2



BOTTOM VIEW

NOTES

- ALL STEELWORK TO BE FABRICATED IN ACCORDANCE WITH AS 4100.
- UNLESS NOTED OTHERWISE:
 - ALL HOT ROLLED FLATS TO BE GRADE 250 MINIMUM IN ACCORDANCE WITH AS 1594.
 - ALL HOT ROLLED SECTIONS TO BE GRADE 250 MINIMUM IN ACCORDANCE WITH AS 3679.
 - ALL HOLLOW SECTIONS TO BE GRADE C350 IN ACCORDANCE WITH AS 1163.
- AFTER FABRICATION, ALL BURRS AND SHARP EDGES TO BE REMOVED.
- ALL WELDING TO BE IN ACCORDANCE WITH AS 1554 PART 1.
- CONSUMABLES (ELECTRODES) SHALL BE MATCHED WITH THE STEEL TYPE IN COMPLIANCE WITH AS/NZS 1554.1 TABLE 4.6.1(A) & THE RELEVANT COLUMNS OF THE TABLE DEPENDING ON THE TYPE OF WELDING PROCESS BEING UNDERTAKEN.
- UNLESS NOTED OTHERWISE:
 - ALL WELDS SHALL BE 6mm CONTINUOUS FILLET WELDS, CATEGORY GP.
 - BUTT WELDS SHALL BE CONTINUOUS FULL PENETRATION, CATEGORY SP.
 - ALL WELDS TO BE CARRIED OUT IN THE SHOP UNLESS NOTED AS 'WELD ON SITE'.
- WELDS SHALL BE INSPECTED TO AS/NZS 1554.1 CLAUSE 7.3 (VISUAL INSPECTION OF WORK) UNLESS THE WELDING PROCESS IS SUPERVISED AND CARRIED OUT BY QUALIFIED PERSONNEL AS DEFINED IN AS/NZS 1554.1 CLAUSE 4.12.1 AND CLAUSE 4.12.2.
- AFTER FABRICATION, ALL WELDS TO BE CHIPPED FREE OF SLAG.
- STEELWORK TO BE HOT DIP GALVANISED TO AS 4680 BEFORE MOULDING.
- AFTER GALVANISING, ALL HOLES TO BE CLEARED, THREADED HOLE RE-TAPPED, SHARP EDGES TO BE REMOVED & EXCESS GALVANISING REMOVED FROM MATING PARTS.
- WHERE THE GALVANISING FINISH HAS BEEN DAMAGED, AREA TO BE TREATED WITH COLD GALVANISING PAINT SIMILAR TO ZINCFIX. COATINGS TO BE APPLIED IN ACCORDANCE WITH THE MANUFACTURERS INSTRUCTIONS.
- ALL BOLTS, NUTS AND WASHERS TO BE STAINLESS STEEL.
- TOTAL MASS OF OUTREACH ARM IS 21Kg.
- APPLY GREASE TO THE TAPPED THREADS BEFORE INSERTING THE SCREWS.
- THE LUMINAIRE ATTACHMENT POINT SPIGOT SHALL BE IN ACCORDANCE WITH AS/NZS 1158.6 APPENDIX "D".
- IF ANY MATERIAL SIZE AS DETAILED ON EA. DRAWING IS TO BE CHANGED, PRIOR APPROVAL MUST BE OBTAINED FROM EA.

CAD DRAWING
DO NOT MANUALLY AMEND
A M E N D M E N T S
3. DRAWING BORDER UPDATED.
NOTES UPDATED. DETAIL 1
UPDATED IN ACCORDANCE
WITH AUSTRALIAN
STANDARDS.
C.SAWDY
13.06.2013
APPROVED : PHIL HUDSON

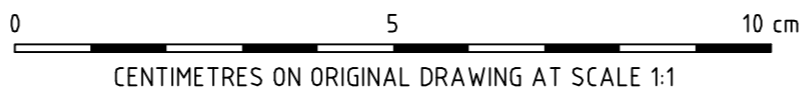
STOCKCODE
H125237



MECHANICAL DESIGN
570 GEORGE STREET
SYDNEY NSW 2000

SCALE	1 : 2 , 10
DESIGNED	PS
DRAWN	PWK
CHECKED	G. SKINNER
APPROVED	07.10.1998
DATE	
PROJECT NUMBER	
PROJTRAK NUMBER	

STREET LIGHTING
OUTREACH ARM-CURVE FANCY
STRAIGHT OUT ARM
ARRANGEMENT AND DETAILS



SIZE	DRAWING No	SHEET	AMD
A2	520430	1	3