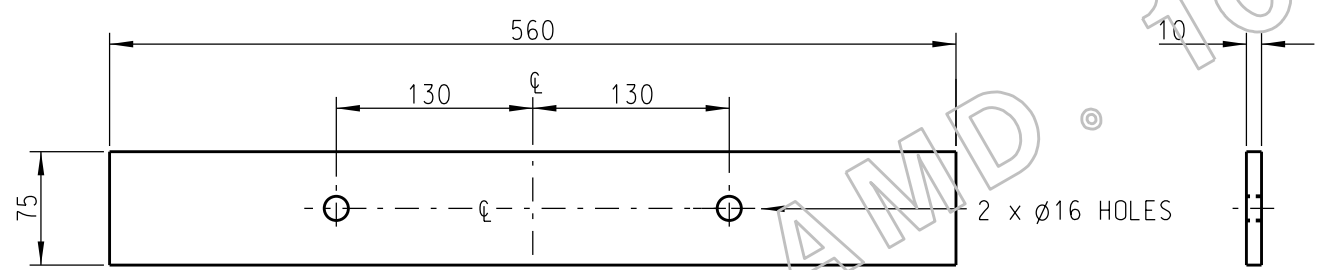
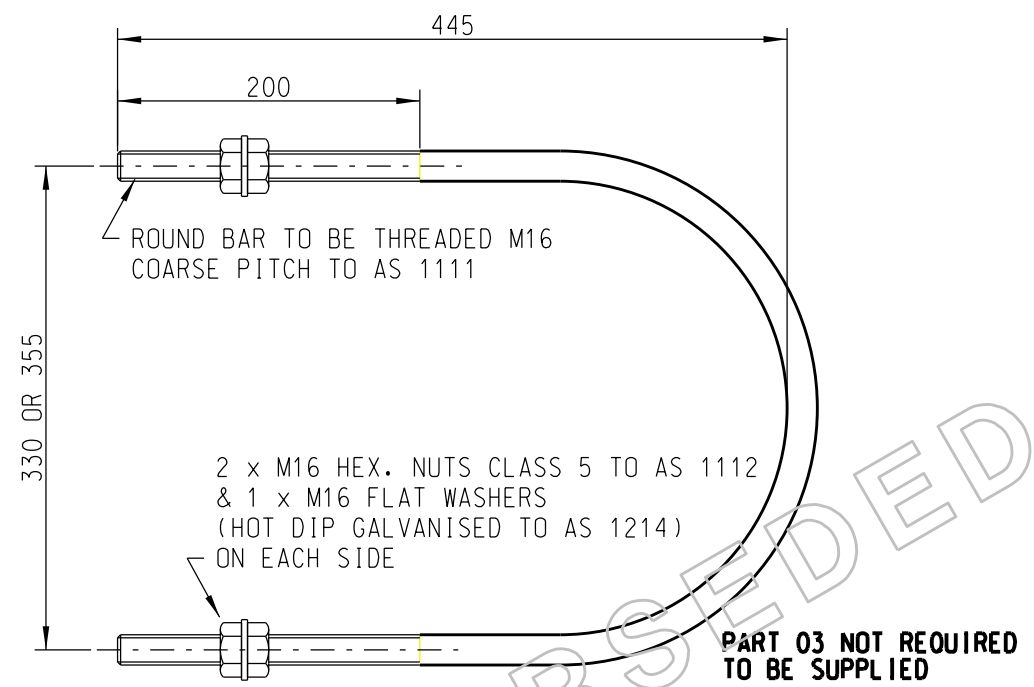


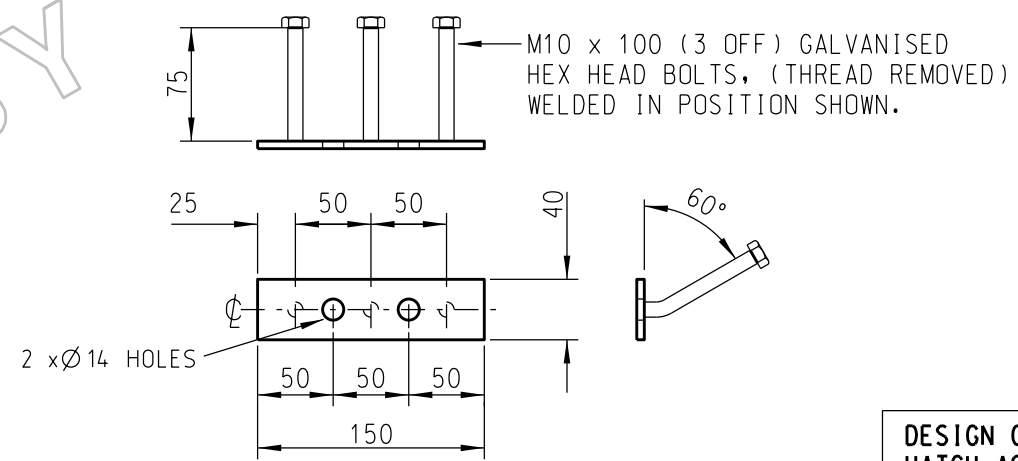
**PART 02 : BACKING PLATE - 1 OFF**  
 MATERIAL : 75 x 10mm STEEL FLAT BAR 250 GRADE  
 FINISH : HOT DIP GALVANISED TO AS 1650



**PART 04 : RESTRAINING PLATE - 1 OFF**  
 MATERIAL : 75 x 10mm STEEL FLAT BAR 250 GRADE  
 FINISH : HOT DIP GALVANISED TO AS 1650



**PART 03 : "U" BOLT**  
 MATERIAL : 16mm ROUND BAR AS 1204 - 250 GRADE  
 FINISH : HOT DIP GALVANISED TO AS 1650 & AS 1214  
 M16 NUTS TO BE TAPPED 0.4mm OVERSIZE AFTER GALVANISING  
 STOCK CODES : 330dia - H36916    355dia - H36924



**PART 05 : FUSE PARKING BAR - 2 OFF**  
 MATERIAL : 40 x 5mm STEEL FLAT BAR 250 GRADE  
 FINISH : HOT DIP GALVANISED TO AS 1650

DESIGN CERTIFIED TO AUSTRALIAN STANDARDS BY  
 HATCH ASSOCIATES P/L REFERENCE No.: SAP 16871

**SUPERSEDED**

CAD DRAWING DO NOT MANUALLY AMEND A M E N D M E N T S	DWN: RAY DEAL
	CHKD: DANIEL DAFO
	APP'D: ROSS HUGHES
	DATE: 18/03/2015
	SUPERSEDED BY SHEET 1 AMD 10

9
---

145 NEWCASTLE RD WALLSEND, NSW 2287  
 Ph 02 4951 9388  
 Fax 02 4951 9389

SCALE	1:5
DESIGNED	WILLIAM GRAHAM
DRAWN	PATRICIA RIOS
CHECKED	WILLIAM GRAHAM
APPROVED	R. BREMELL
DATE	25/01/00
PROJECT NUMBER	STD
PROJTRAK NUMBER	

STANDARD CONSTRUCTION DISTRIBUTION SUBSTATION TRANSFORMER POLE MOUNTING BRACKET MANUFACTURING DETAILS			
SIZE	DRAWING No	SHEET	AMD
A3	566101	02	9