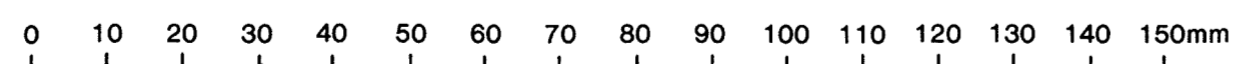
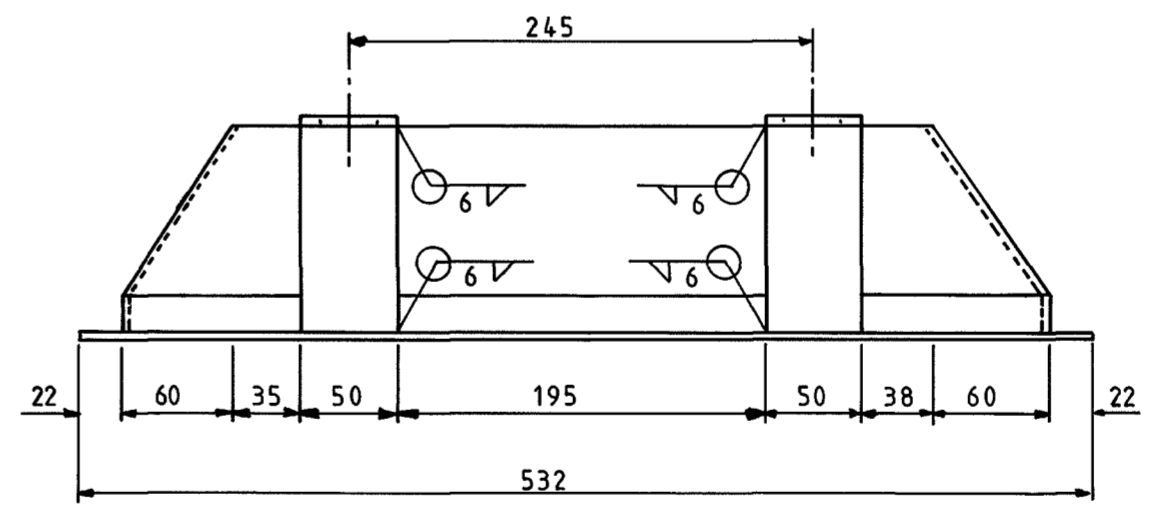
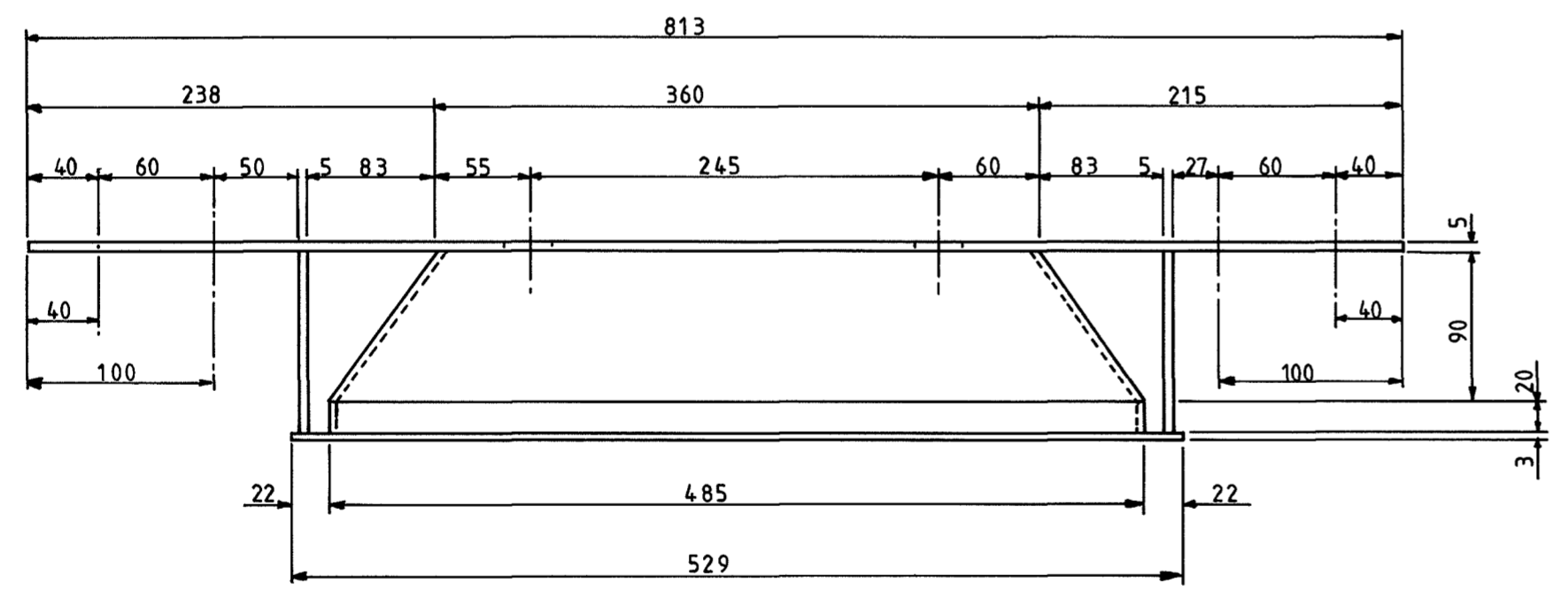


NOTES:

1. UNLESS OTHERWISE STATED ALL DIMENSIONS ARE IN MILLIMETRES
2. MINIMUM MATERIAL - GRADE 250 (a) 50x5mm FLAT BAR (b) 3mm FLAT STEEL PLATE
3. TOLERANCE: UNLESS OTHERWISE STATED (a) ALL DIMENSIONS UP TO AND INCLUDING 40mm SHALL BE ± 1mm (b) ALL DIMENSIONS GREATER THAN 40mm SHALL BE ± 2mm (c) ALL HOLES SHALL BE ± 0.1mm



FOR MICROFILMING PURPOSES ONLY

NUMBER OF MICROFILM COPIES

NOTE: RAGBOLT ASSEMBLY - DRAWING N° A2-14607 - STOCK N° 5880

A2-514020

AMENDMENTS	

SCALE	1:400
DATE:	30-8-88
DRAWN:	P.S.
TRACED:	P.S.
CHECK'D:	AKB
D.E.DES:	AKB

THE SHORTLAND COUNTY COUNCIL
LIGHTING COLUMN CONCRETE PLINTH STEEL MOULD
 FOR USE WITH RAGBOLT ASSEMBLY

Cliss
 for CHIEF ENGINEER
A2-14020

ASSOCIATED DRAWINGS