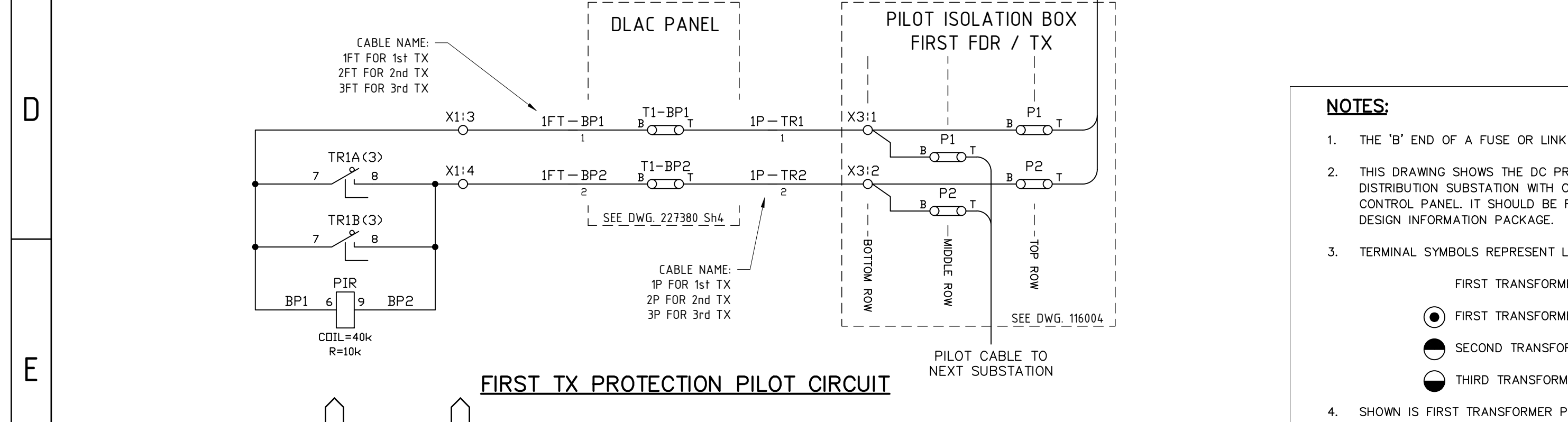
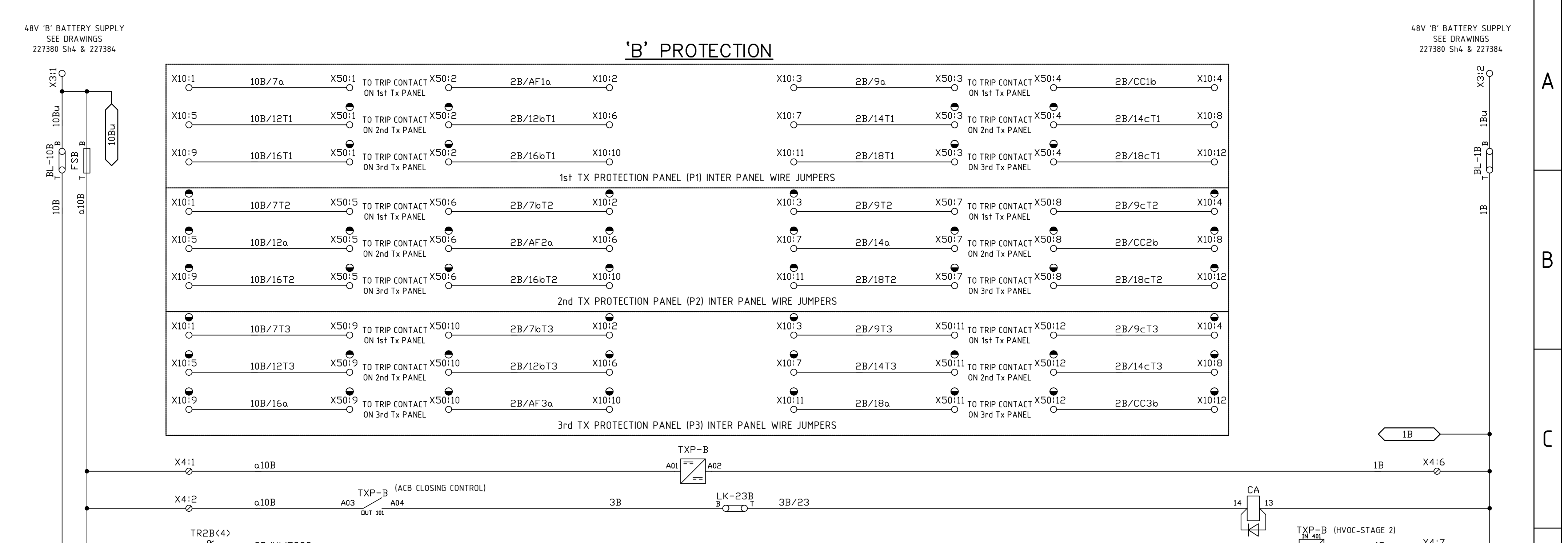
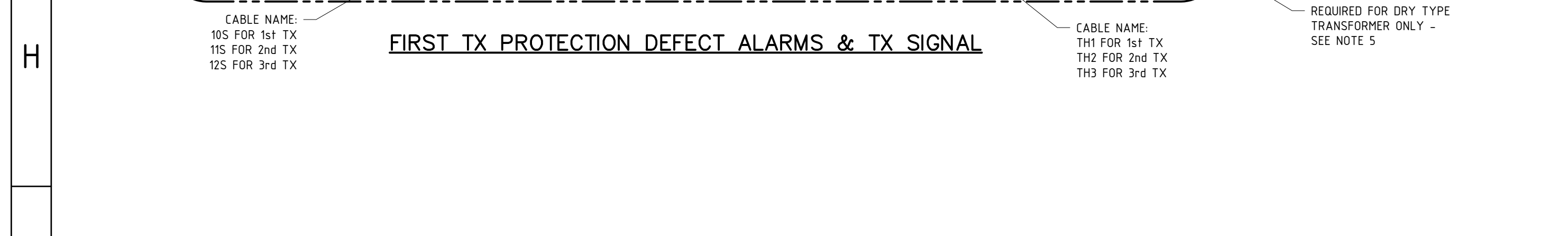
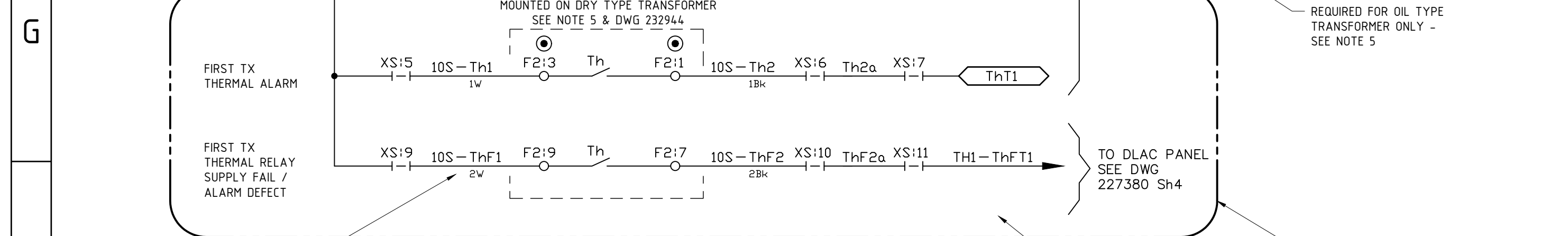
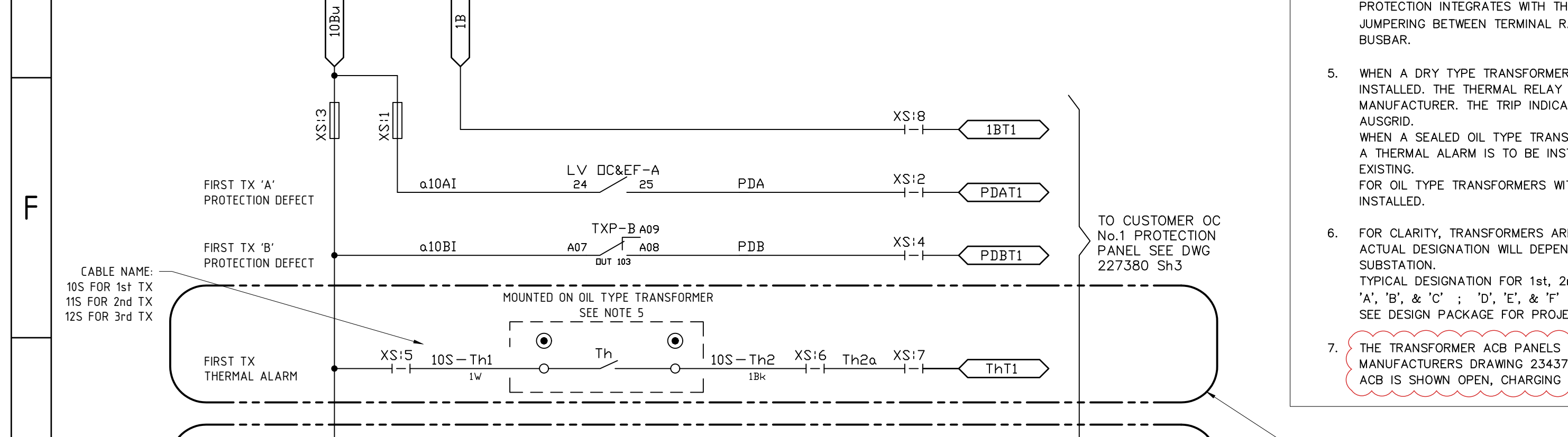


DC TEST LINK FUNCTION TABLE with columns for LINK No., LINK FUNCTION, and a list of links from BL-7B to BL-1B.



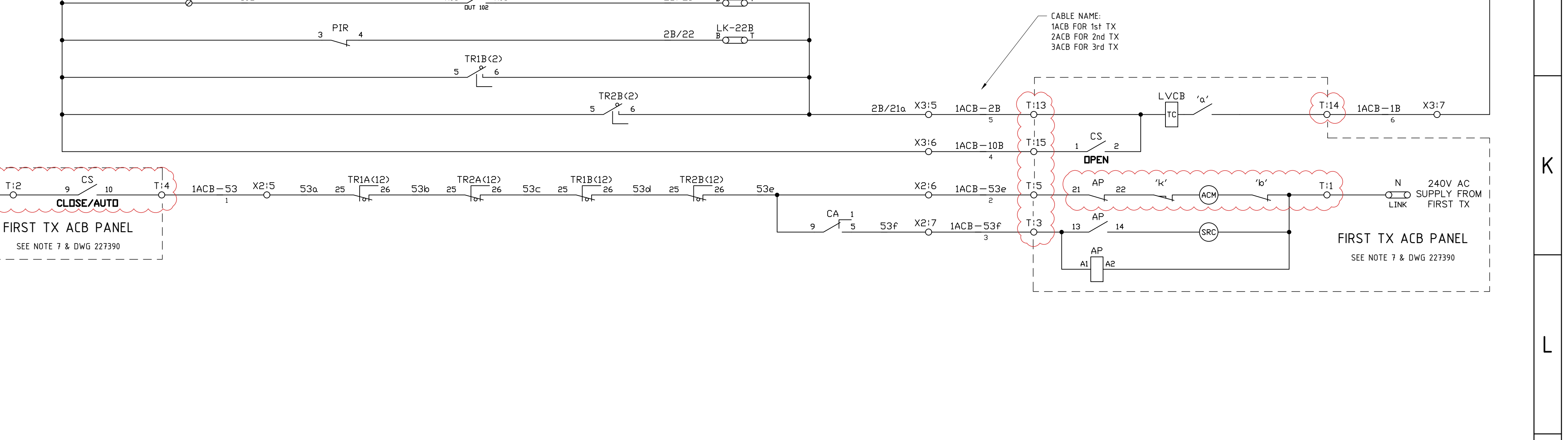
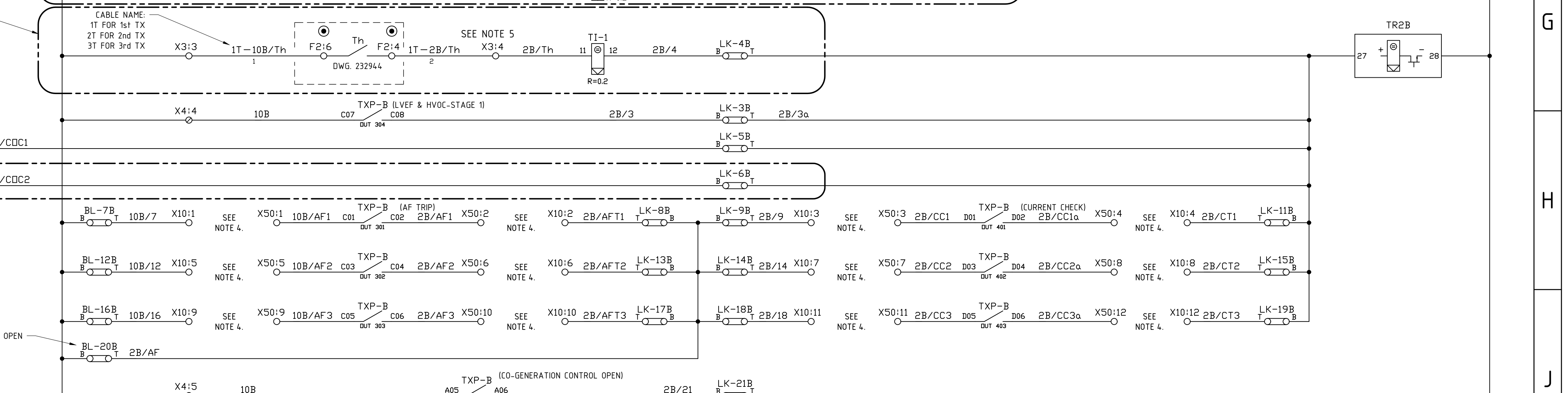
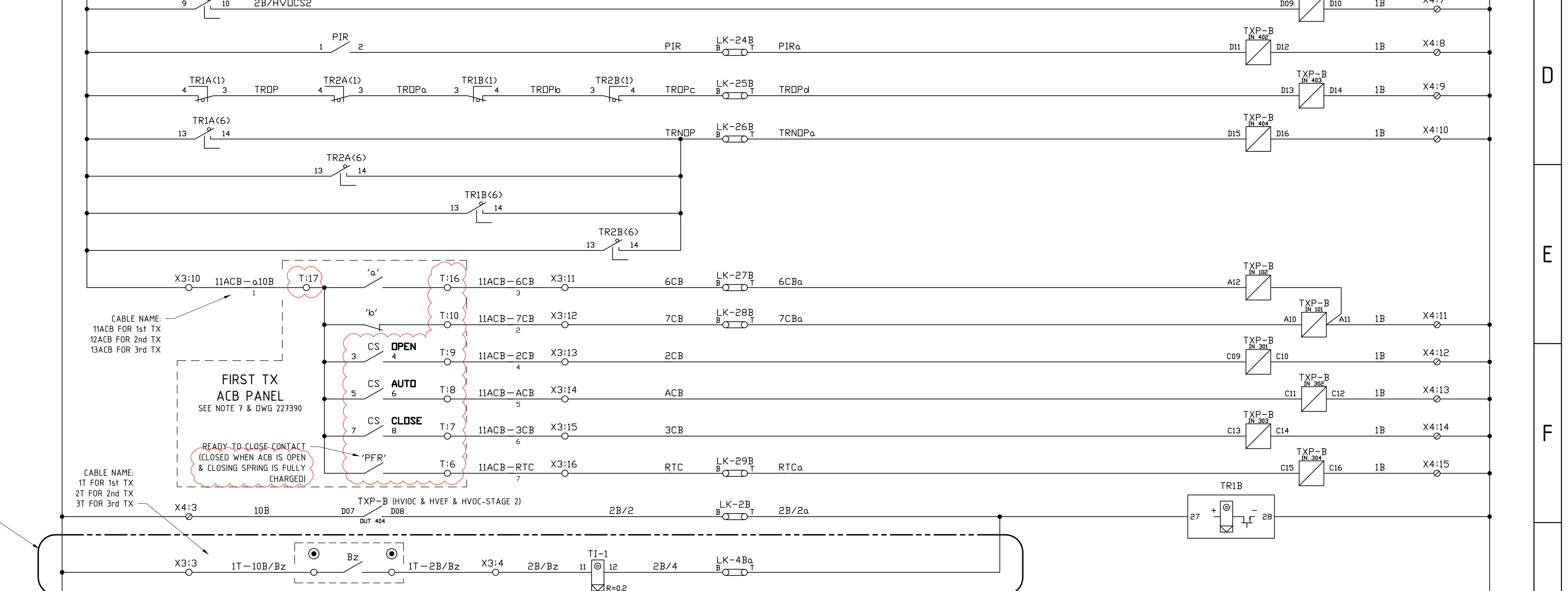
- NOTES: 1. THE 'B' END OF A FUSE OR LINK... 2. THIS DRAWING SHOWS THE DC PROTECTION... 3. TERMINAL SYMBOLS REPRESENT LOCATION OF TERMINALS... 4. SHOWN IS FIRST TRANSFORMER PROTECTION PANEL... 5. WHEN A DRY TYPE TRANSFORMER IS USED... 6. FOR CLARITY, TRANSFORMERS ARE REFERENCED AS 1st, 2nd, 3rd TRANSFORMER... 7. THE TRANSFORMER ACB PANELS...



REFERENCE DRAWINGS table with columns for DWG No., description, and DWG No.

TAGNAME table with columns for TAGNAME, MFG, CATNO, DESC, and REF_DWG.

LEGEND table with columns for symbol, description, and symbol.



Ausgrid logo and project information including: 570 George Street, SYDNEY NSW 2000, P. 9272 3805, SCALE N/A, DESIGNED L.MARTINUZZI / E.KAIROUZ, DRAWN C.MURPHY, CHECKED C.MURPHY, APPROVED C.MURPHY, DATE 17/06/2015, TRIM REF, PROJECT NUMBER OPEX-6923-1, DRAWING No 227380, SHEET 2, AMD 1, SIZE A0, CITY DISTRIBUTION SUBSTATIONS WITH E TYPE LV BOARD, & OPTICAL ARC FLASH DETECTION TRANSFORMER DC SCHEMATIC, C&P - DISTRIBUTION SUBSTATION