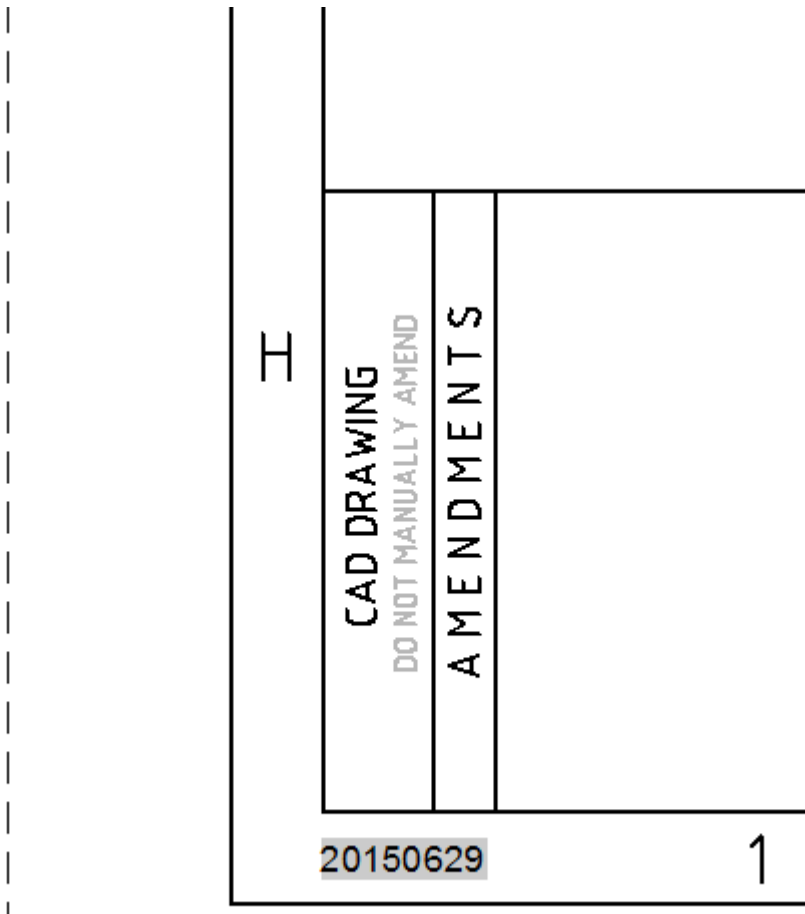


NET CAD EXTERNAL CAD TEMPLATE – INTERIM UPDATE (29/6/15)

INTERIM UPDATE: VERSION DATE 29/6/2015



MAJOR UPDATE: SCHEDULE TO THE CERTIFIED DESIGN

SCHEDULE TO THE CERTIFIED DESIGN		PROJECT NUMBER: SCXXXX	
1. CONNECTION CUSTOMER			
2. PREMISES ADDRESS			
2. THE CONNECTION			
Maximum capacity of the connection: (i.e. maximum permitted current draw)		XXXX Amps	
Point of common coupling:		((substation XY12345 LV busbar), (Premises pole/pillar number XY12345)	
Connection point (i.e. point of supply):		(substation XY12345 LV busbar), (Premises pole/pillar 'A'/MSB/POA)	
4. LEASES AND EASEMENTS REQUIRED BY AUSGRID			
The leases and easements as shown in the certified design:			
5. PREMISES CONNECTION ASSETS			
(a) Funded by the connection customer undertaken by ASP1:		All work depicted in the certified design that are not included in 5(b) or 5(d) below	
(b) Funded by Ausgrid undertaken by ASP1:		(Supply and installation of)/(Supply only....)/(Installation only....)/(Trenching from...to....)/(Spare conduit)/(Low voltage interconnector)/(Streetlighting bracket/luminaire) etc	
(c) Ausgrid's payment to your ASP/1 if it undertakes works in 5(b):(incl GST)		\$XXX,XXX.XX	
(d) Funded by Ausgrid undertaken by Ausgrid :		(Insert AG undertaken work if any. Do not include monopoly works) (Terminate LV cable in kiosk substation)/(Install HV cable in zone substation yard)/(Jointing of pilot cable)/(Joints in city pits?) (funding of recoverable portion of kiosk substation) (supply ZZZkVA transformer/RMCB/protection panel to site/store)etc	
6. AUSGRID'S CONNECTION REALATED ANCILLARY SERVICES (incl GST) *if this service is required more than once, you will incur this fee on each occasion ** if this service is required, the ASP/1 will incur this fee on each occasion			
Standard Offer -ASP1 Connection:	\$XX,XXX	Access Permit:	\$XX,XXX
Contestable Process Facilitation:	\$XX,XXX	Clearance to Work:	\$XX,XXX
Property Services:	\$XX,XXX	Inspection* (ASP/1 Grade A/B/C):	\$AAA/BBB/CCC
Customer Interface Coordination:	\$XX,XXX	Substation Commissioning:	\$XX,XXX
Notification of Arrangement:	\$XX,XXX	Supply temporary connections:	\$XX,XXX
Administration:	\$XX,XXX	Reinspection:	\$XXX per hour
Substation Contribution:	\$XX,XXX	* If this service is required, the ASP/1 will incur this fee on each occasion	
7. TIMEFRAMES FOR CONNECTION SERVICES AND WORKS			
Timeframes for connection will be developed by your ASP/1 and accepted by Ausgrid in accordance with clause 9.3 of the connection contract. A Table of Critical Dates will be annexed to the connection contract.			
8. PIONEER SCHEME			
Does a Pioneer Scheme apply ?		Commencement date of scheme:	
Is connection customer the original customer ?		If no, connecting customer is scheme member number:	\$XXX_XXX.XX
New scheme applies to:		(HV\LV\Substation)	Connection Customer req'd contribution: \$XX,XXX
9. DEED OF GUARANTEE OF REVENUE			
Is a deed of guarantee of minimum revenue required for connection assets constructed by or on behalf of Ausgrid in accordance with clauses 6?			
Amount of security required:	\$XXX_XXX.XX	Security must be provided in the form of a bank guarantee by an Australian bank.	

NOTE: Schedule to the Certified Design is now a Block with enhanced attributes.